

2200 Series All-In-One

Safety information

- Use only the power supply provided with this product or the manufacturer's authorized replacement power supply.
- Connect the power supply cord to an electrical outlet that is near the product and easily accessible.
- Refer service or repairs, other than those described in the user documentation, to a professional service person.

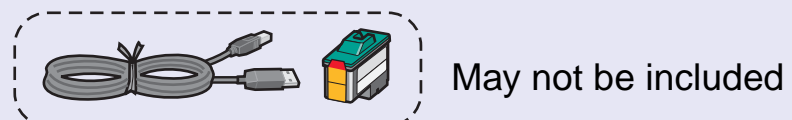
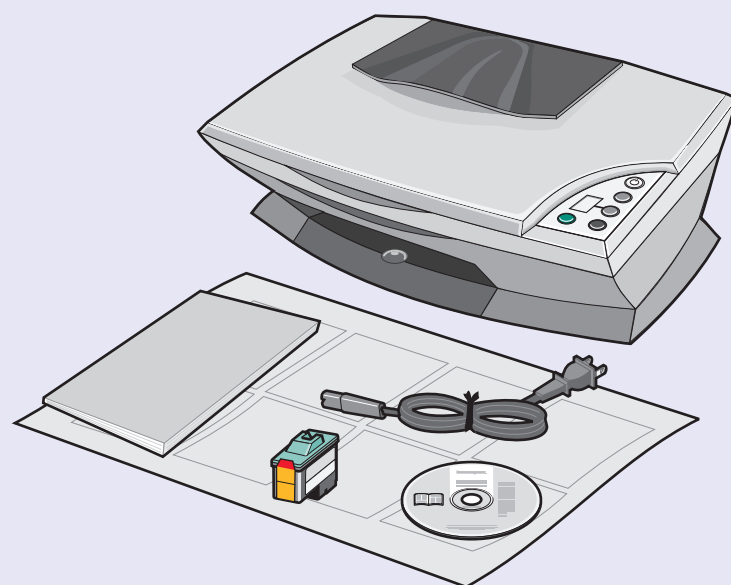
CAUTION: Do not use the fax feature during a lightning storm. Do not set up this product or make any electrical or cabling connections, such as the power supply cord or telephone, during a lightning storm.

For more help:

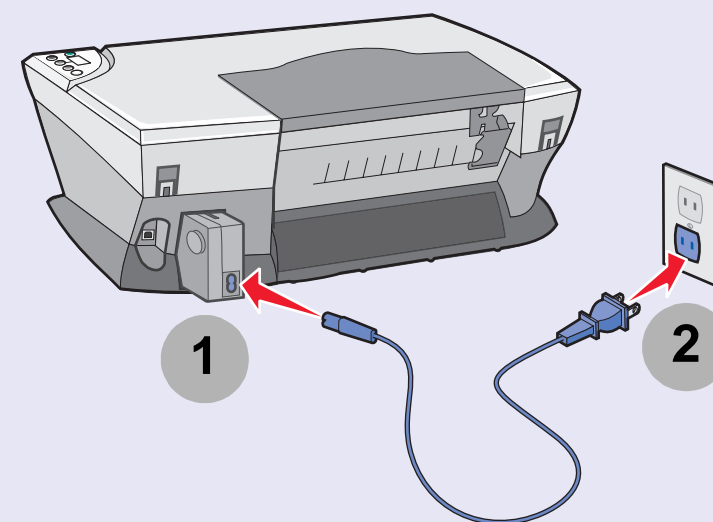
- 1 Refer to your *User's Guide*.
- 2 Visit our Web site.
<http://support.lexmark.com/>
- 3 Call us at (800) 332-4120.
Monday - Friday (9:00 AM - 9:00 PM EST)
Saturday (Noon - 6:00 PM EST)

Phone number and support times may change without notice.

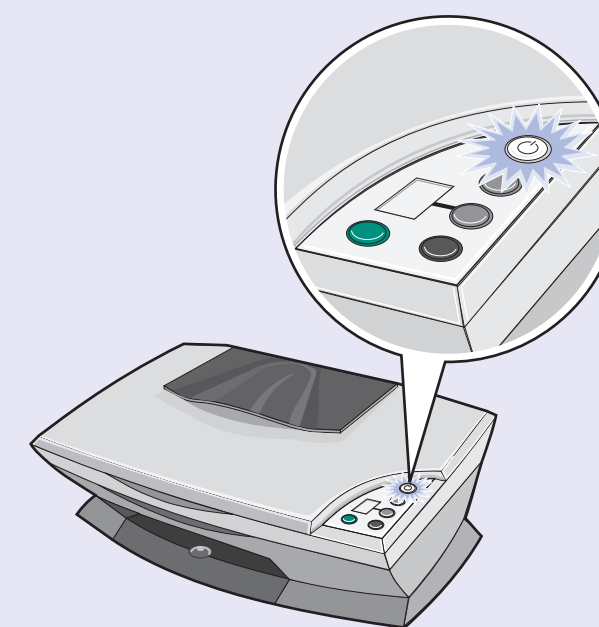
1 Unpack your All-In-One.



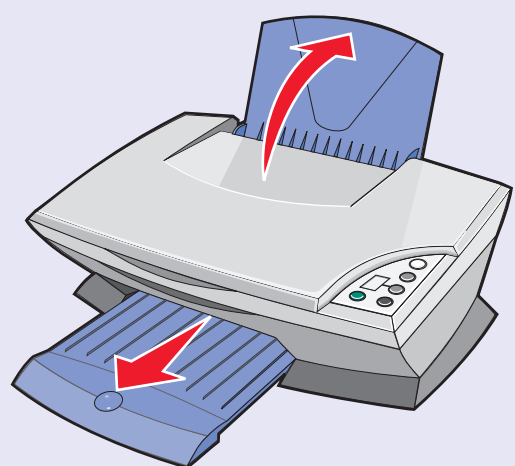
2 Connect the power supply cord.



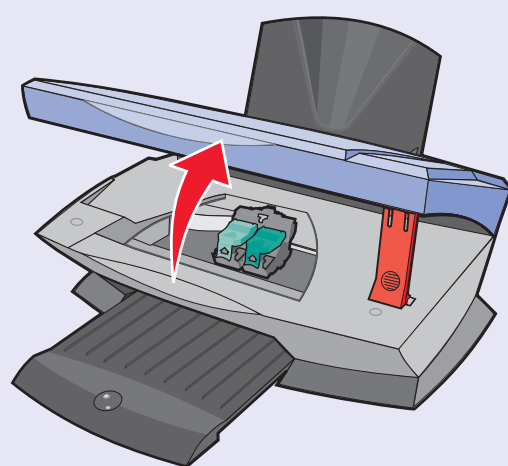
3 Make sure the power light is on.



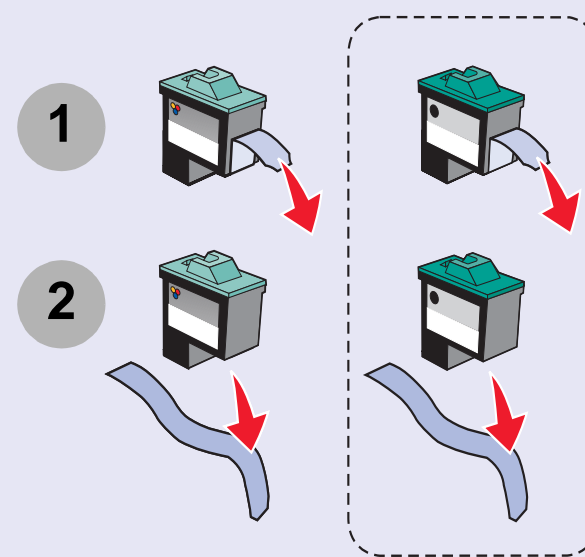
4 Raise the paper support and extend the paper exit tray.



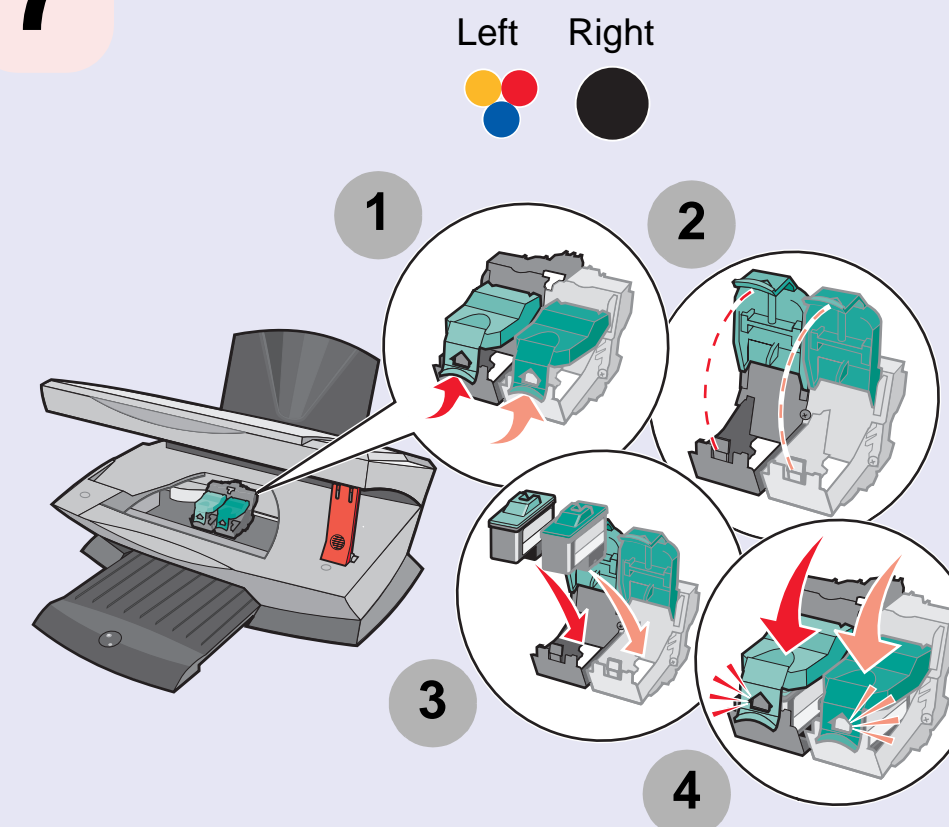
5 Lift the scanner unit.



6 Remove the sticker and tape from the print cartridge(s).



7 Insert the cartridge(s) and snap the lid(s) closed.

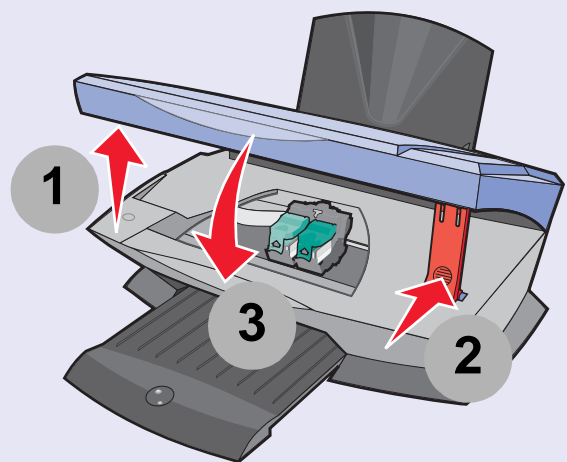


21T0070

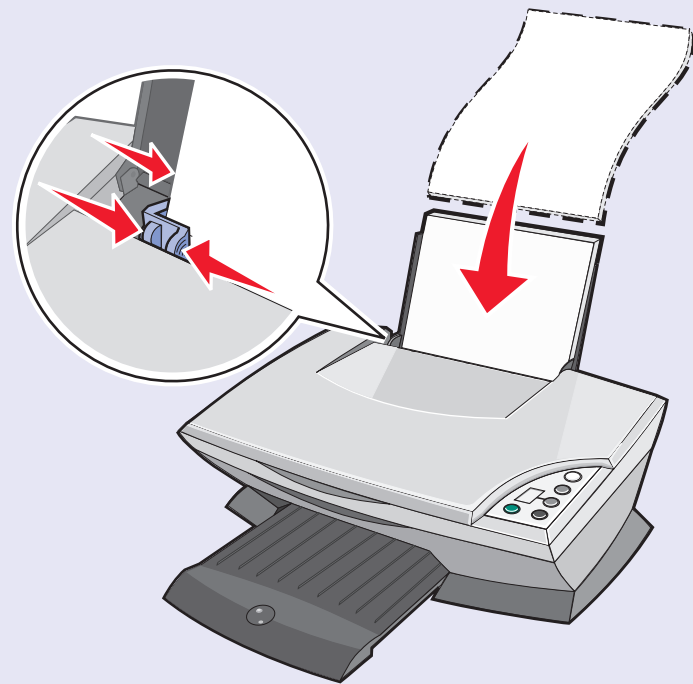
www.lexmark.com



8 Close the scanner unit.



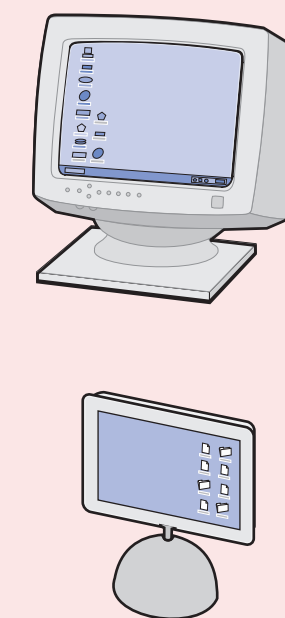
9 Load paper, and adjust the paper guide.



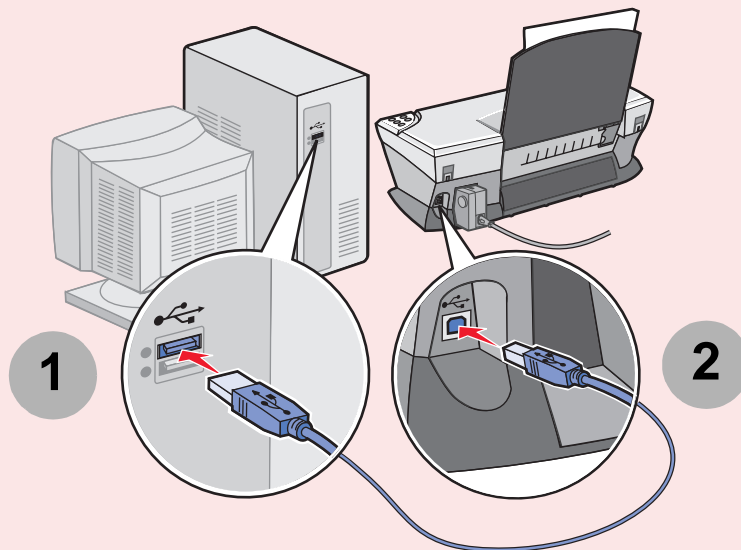
See "Setting up without a computer" in the *User's Guide* if you are using your All-In-One **without** a computer.

Continue, if you are using your All-In-One **with** a computer.

10 Make sure the computer is on.

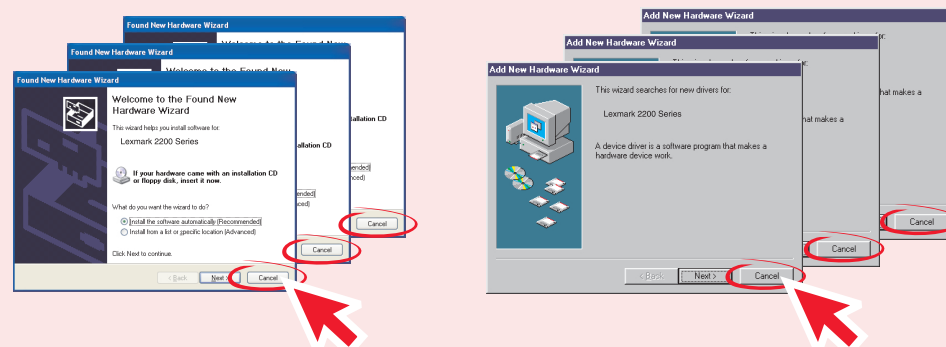


11 Connect the USB cable.



12 **Important!** Click **Cancel** on *all* Add New Hardware screens.

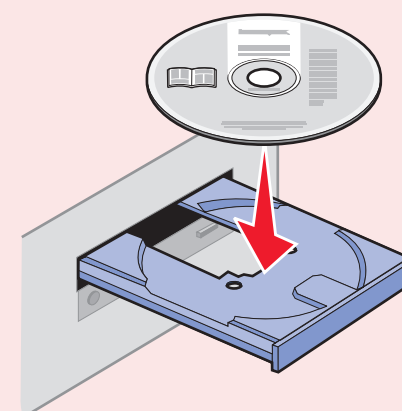
Windows



Macintosh

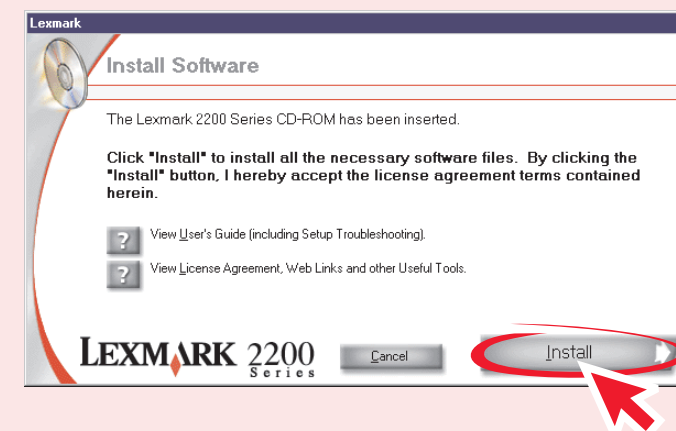
Continue with step 13.

13 Insert the CD.



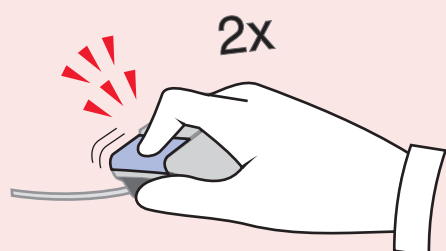
14 Install the software.

Windows



14 Install the software.

Macintosh



1



2



When I insert the CD, nothing happens

Windows

- 1 Eject and reinsert the printer software CD. If the printer software installation screen does not appear, continue to the next step.
- 2 From your desktop, double-click **My Computer** (In Windows XP, click **Start** → **My Computer**).
- 3 Double-click the **CD-ROM drive** icon. If necessary, double-click **setup.exe**.
- 4 When the printer software installation screen appears, click **Install**.
- 5 Follow the instructions on each screen to complete printer software installation.

Macintosh

- 1 Remove the All-In-One software CD, and then restart your computer.
- 2 Insert the All-In-One software CD.
- 3 Double-click the **Install** icon.
- 4 Follow the instructions on each screen to complete printer software installation.