

For more help:

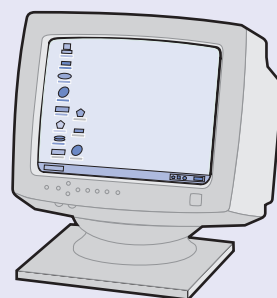
- 1 Refer to your *User's Guide*.
- 2 Visit our Web site:
<http://support.lexmark.com/>
- 3 Call us at (800) 332-4120.
Monday–Friday (9:00 A.M.–9:00 P.M. EST)
Saturday (Noon–6:00 P.M. EST)
Phone number and support times may change without notice.

Safety information

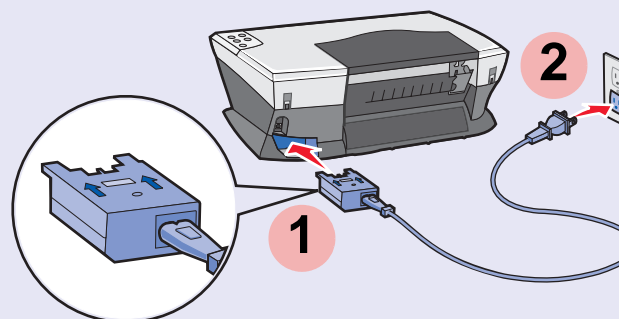
- Use only the power supply provided with this product, or the manufacturer's authorized replacement power supply.
- Connect the power supply to an electrical outlet that is near the product and easily accessible.
- Refer service or repairs, other than those described in the user documentation, to a professional service person.

CAUTION: Do not use the fax feature during a lightning storm. Do not set up this product or make any electrical or cabling connections, such as the power cord or telephone, during a lightning storm.

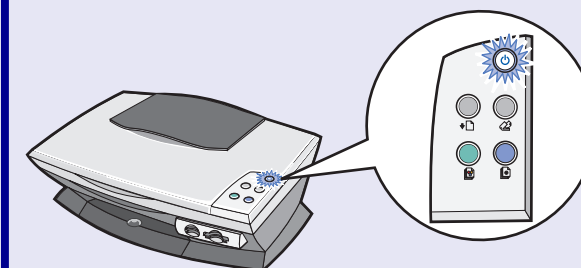
1 Make sure your computer is on.



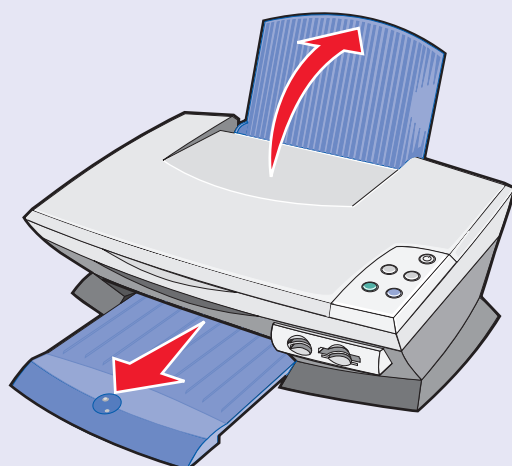
2 Connect the power supply.



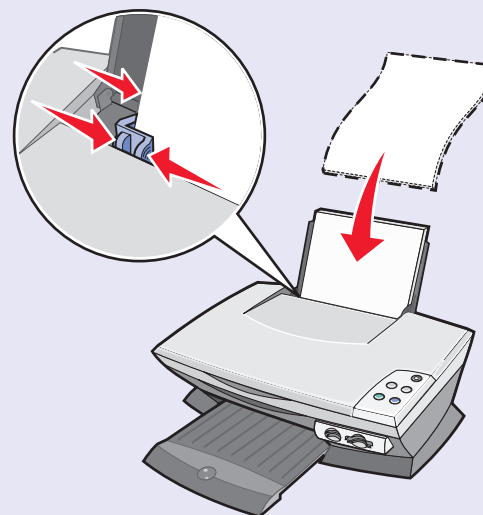
3 Make sure the power light is on.



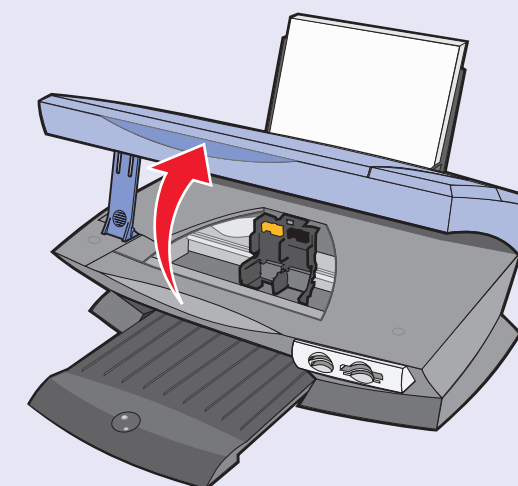
4 Lift the paper support and extend the paper exit tray.



5 Load plain paper and adjust the paper guide.

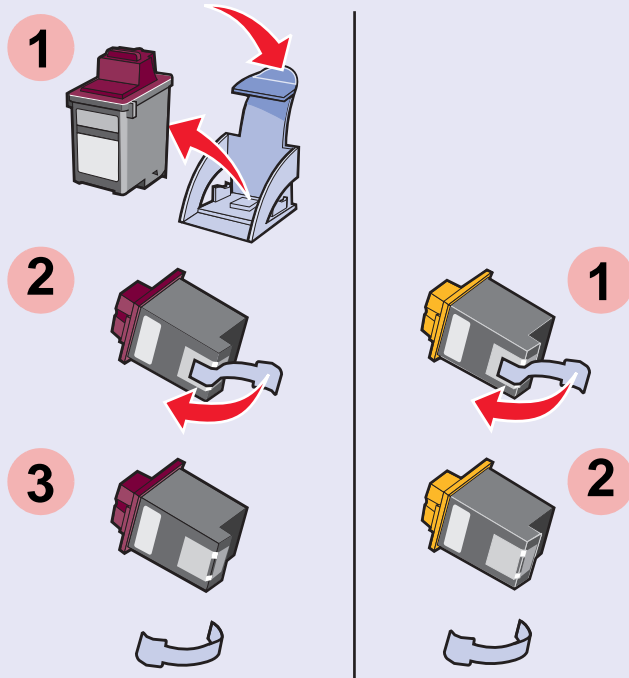


6 Lift the scanner unit.



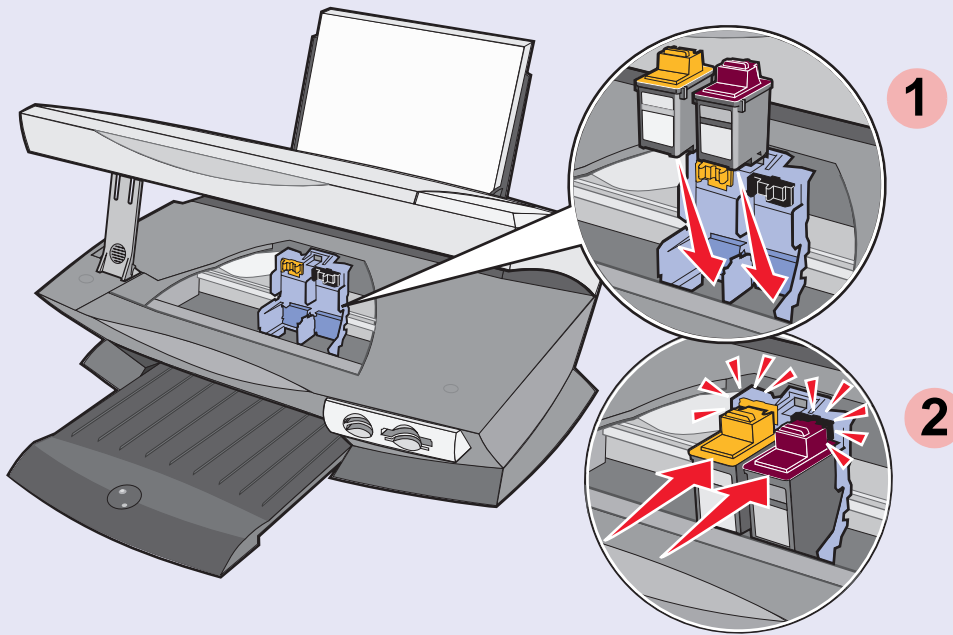
7

Remove the storage unit, sticker, and tape from the print cartridges.



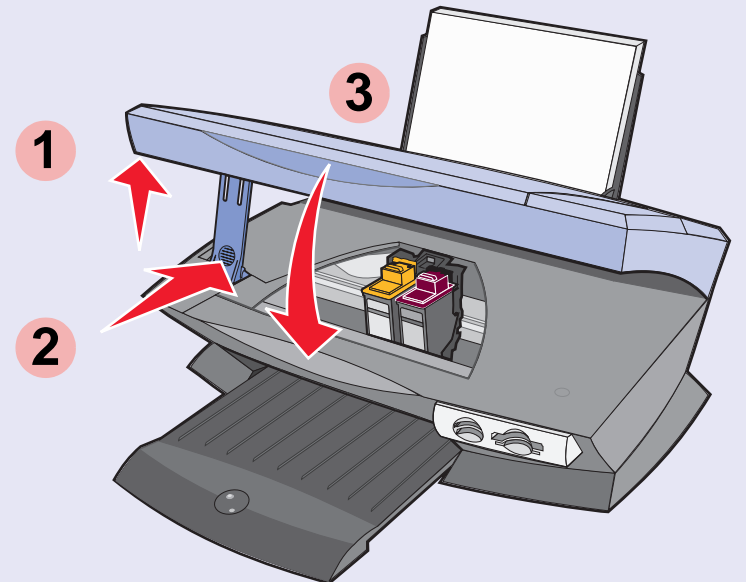
8

Insert and then *snap* in the print cartridges.



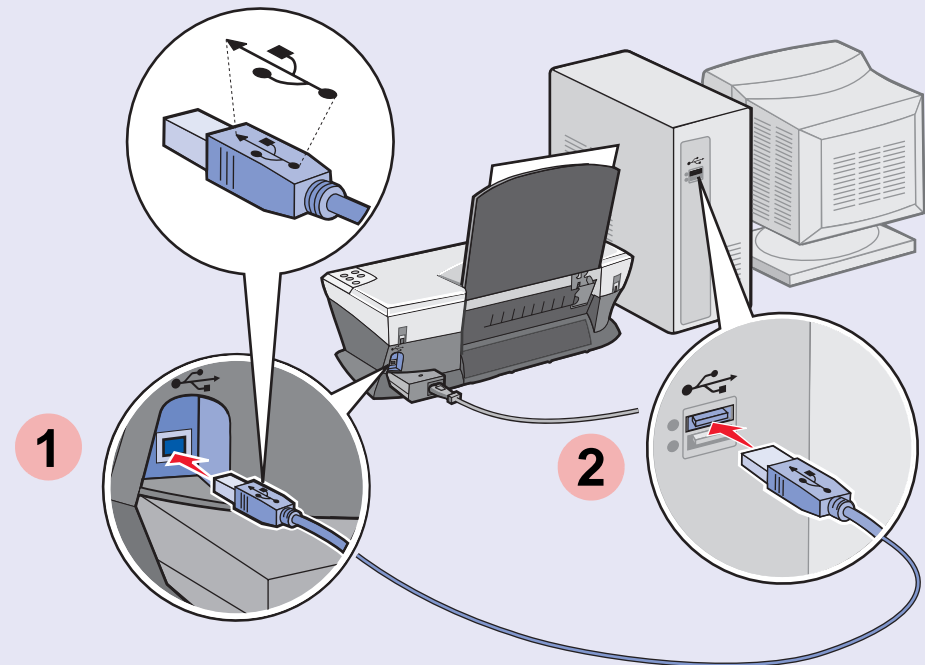
9

Close the scanner unit.



10

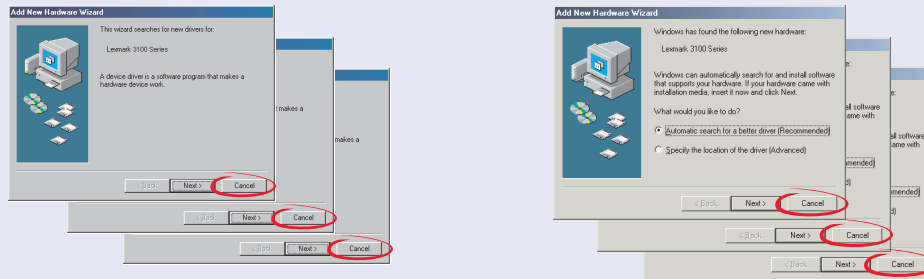
Connect the USB cable.



11

Important!

Click **Cancel** on *all* Add New Hardware screens.



12

Insert the CD. Follow the instructions on the screen to install the software.

