

## Safety information

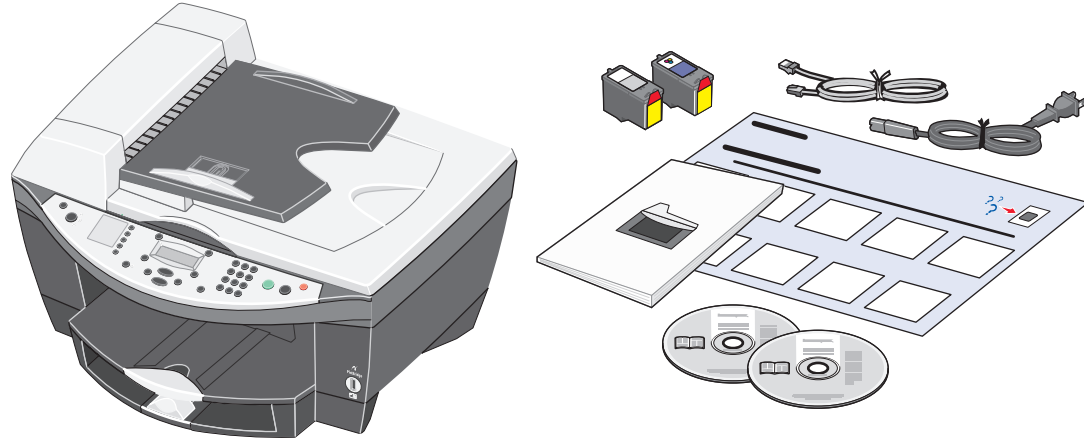
- Use only the power supply provided with this product or the manufacturer's authorized replacement power supply.
- Connect the power cord to a properly grounded electrical outlet that is near the product and easily accessible.
- Refer service or repairs, other than those described in the user documentation, to a professional service person.

**CAUTION:** Do not use the fax feature during a lightning storm. Do not set up this product or make any electrical or cabling connections, such as the power supply cord or telephone, during a lightning storm.

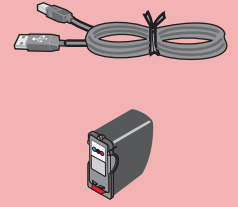
## For more help:

- 1 See the *User's Guide*.
- 2 Visit our Web site: <http://support.lexmark.com/>.
- 3 Call us at 1-800-332-4120.  
Monday–Friday (9:00 AM–9:00 PM EST)  
Saturday (Noon–6:00 PM EST)  
\*Phone number and support times may change without notice.

# 1 Unpack your printer.



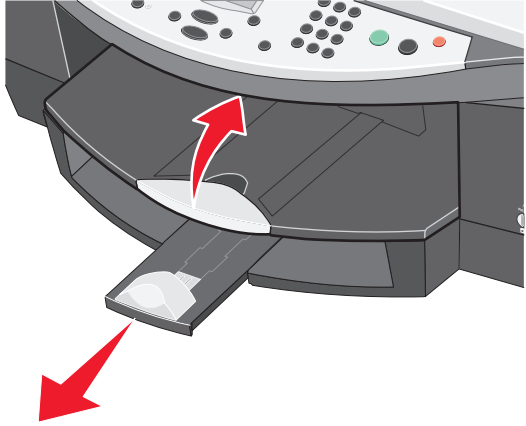
Sold separately.



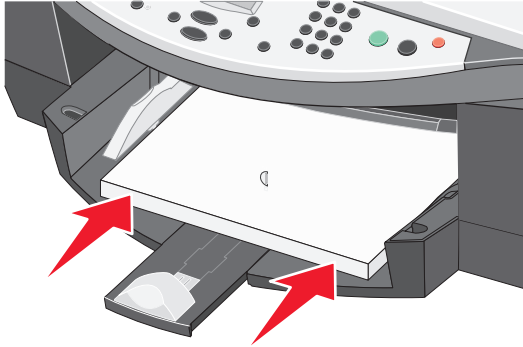
See the *User's Guide* for a listing.

# 2 Load paper.

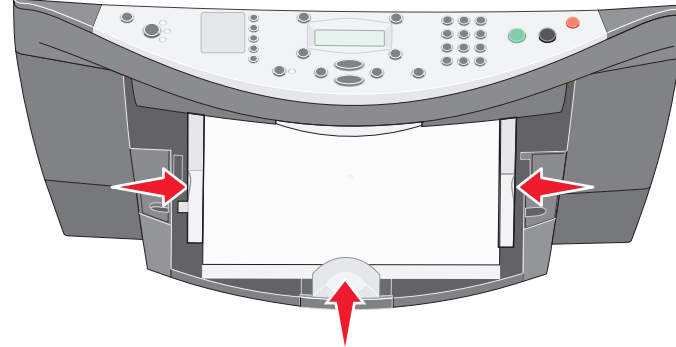
- 1 Raise the paper exit tray, and then extend the paper guide.



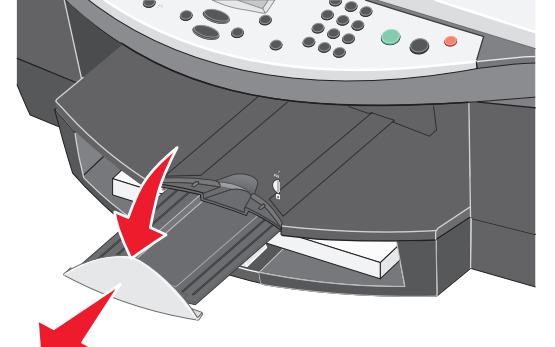
- 2 Load plain paper in the paper tray.



- 3 Adjust the paper guides.

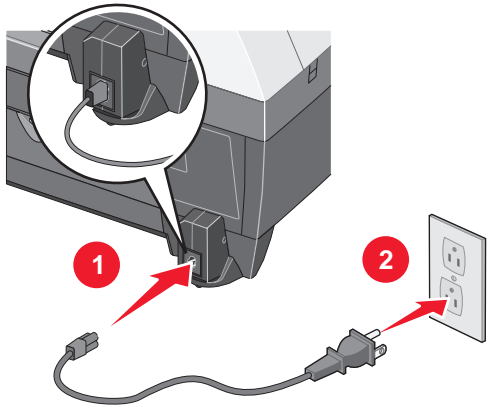


- 4 Lower the paper exit tray, and then extend the paper stop.

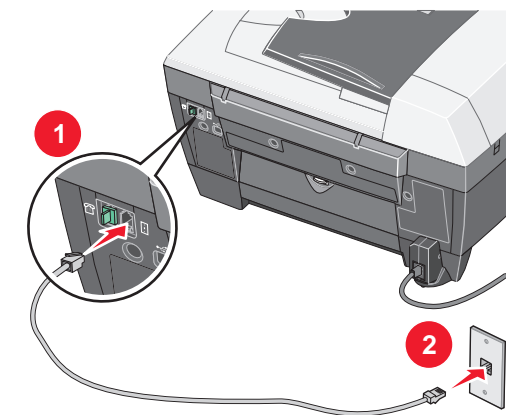


# 3 Prepare the All-In-One.

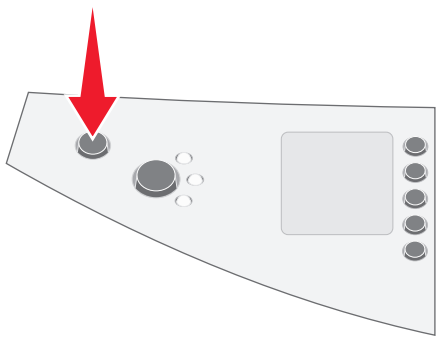
- 1 Make sure the power cord is pushed all the way into the connector.



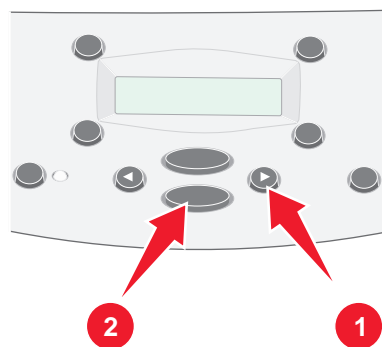
- 2 Connect the telephone line.



- 3 Press Power.

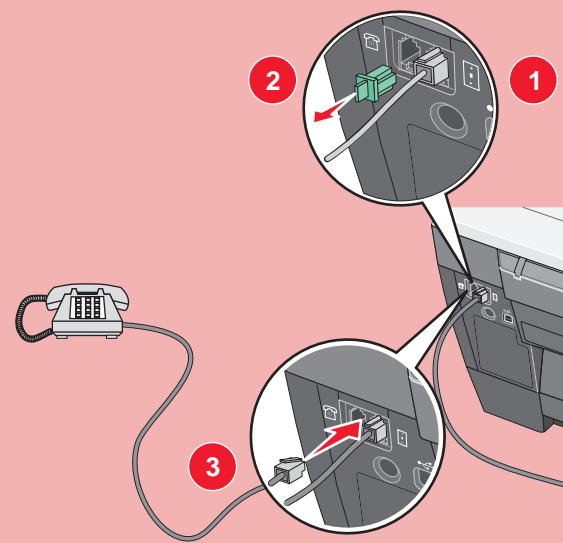


- 4 Press + to scroll, and then press **Select** to enter your *default* language, and then your *default* country or region.

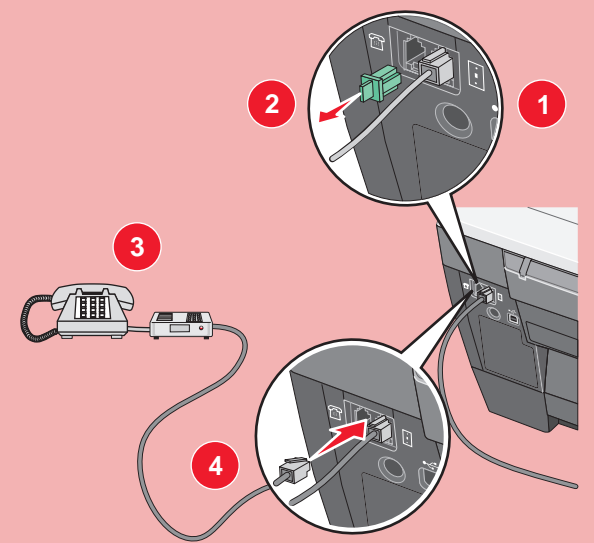


See the *User's Guide* before adding additional equipment.

Add a telephone.



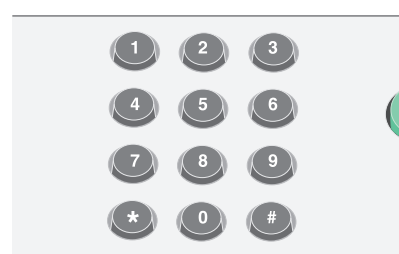
Add a telephone and answering machine.



- 5 Press the keypad to enter the:

- 1 **Date** using two digits for the month, day, and year.
- 2 **Time** using the two digits for both hour and minute.
- 3 **Fax number.**

- ➡ Press **Select**.
- ➡ Press **Select**.
- ➡ Press **Select**.

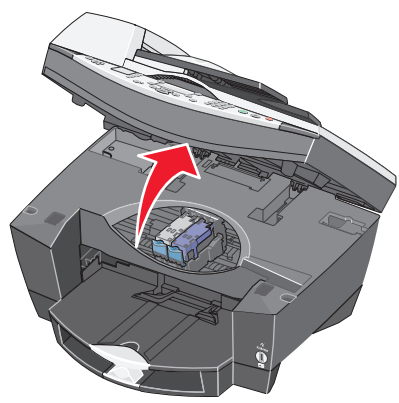


\*21H0070\*

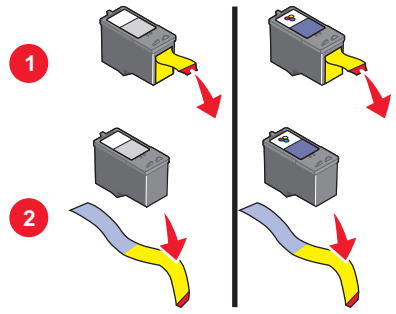


# 4 Install the print cartridges.

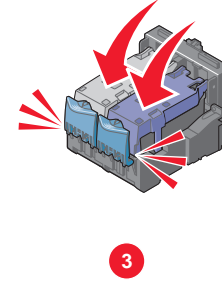
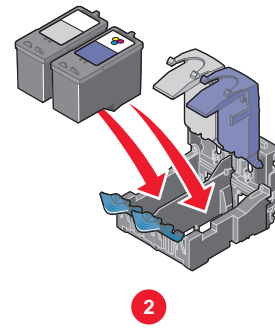
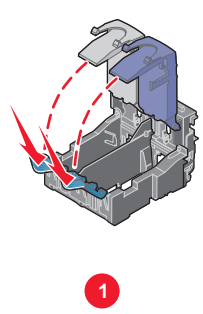
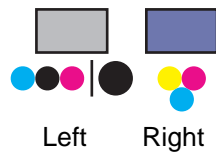
1 Open the scanner unit.



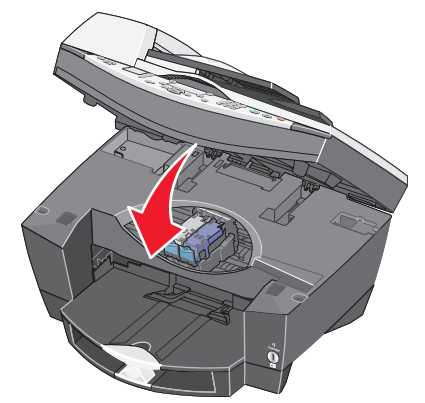
2 Remove the sticker and tape from the print cartridges.



3 Insert the print cartridges.



4 Close the scanner unit.



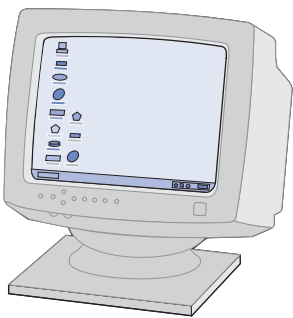
If you are using your All-In-One **with** a computer, continue with the following step.

If you are using your All-In-One **without** a computer, you are finished.

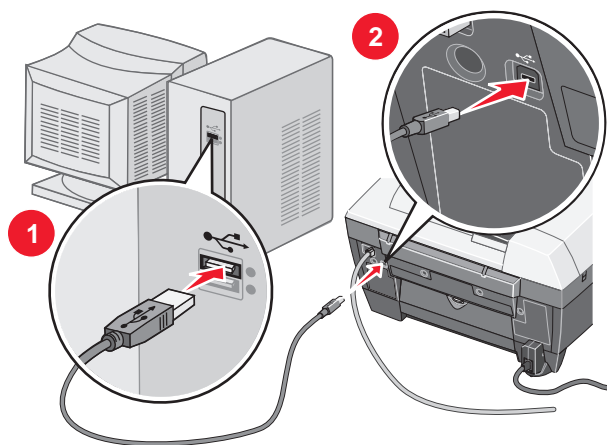
## Windows

# 5 Install the software.

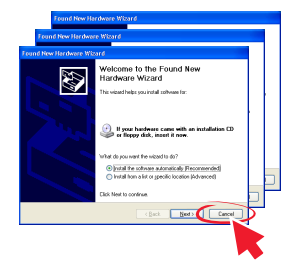
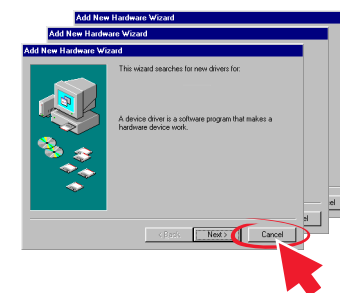
1 Make sure your computer is on.



2 Connect the USB cable.



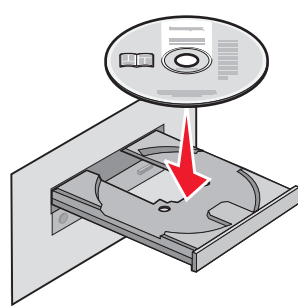
3 Click **Cancel** on all New Hardware Screens.



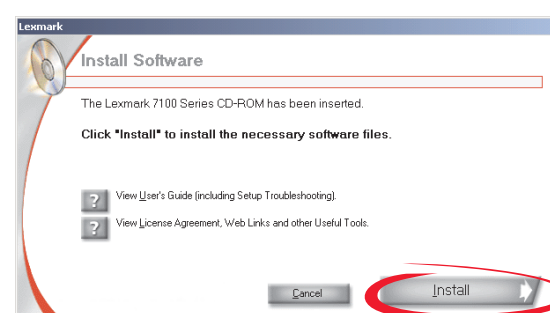
**!** To prevent errors during installation:  
1 Close all open programs.  
2 Temporarily disable any anti-virus software. For help, refer to your program documentation, or contact the software manufacturer for support.

**Important:** After installation is complete, remember to enable your anti-virus software.

4 Insert CD1.



5 Click **Install**.

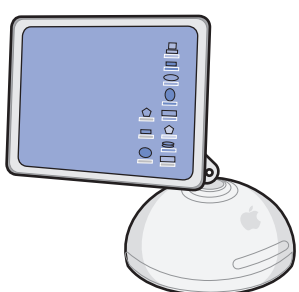


If this install screen does not appear, click **Start → Run** and then type **D:\setup**, where **D** is the letter of your CD-ROM drive.

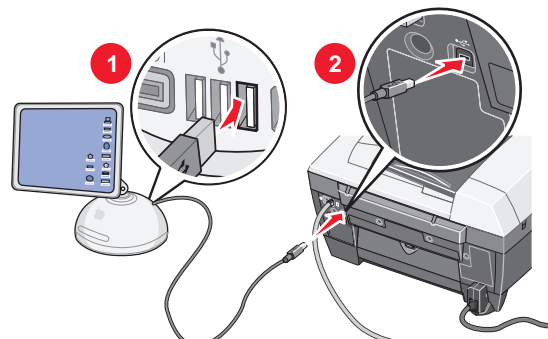
## Macintosh

# 5 Install the software.

1 Make sure your computer is on.



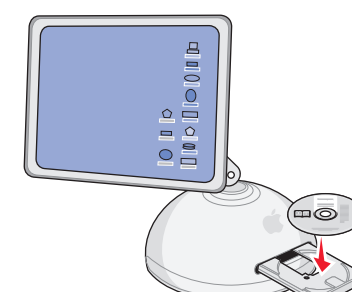
2 Connect the USB cable.



**!** To prevent errors during installation:  
1 Close all open programs.  
2 Temporarily disable any anti-virus software. For help, refer to your program documentation, or contact the software manufacturer for support.

**Important:** After installation is complete, remember to enable your anti-virus software.

3 Insert CD1.



4 Double-click:

