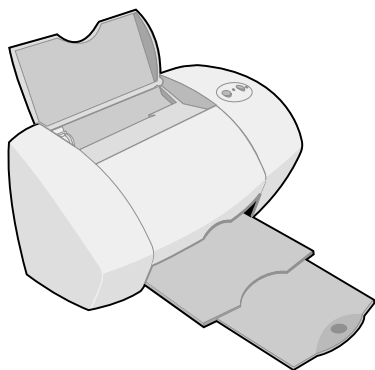


LEXMARKTM

Z54

Color JetprinterTM

From Setup to Printing



January 2002

Edition: January 2002

The following paragraph does not apply to any country where such provisions are inconsistent with local law: LEXMARK INTERNATIONAL, INC., PROVIDES THIS PUBLICATION "AS IS" WITHOUT WARRANTY OF ANY KIND, EITHER EXPRESS OR IMPLIED, INCLUDING, BUT NOT LIMITED TO, THE IMPLIED WARRANTIES OF MERCHANTABILITY OR FITNESS FOR A PARTICULAR PURPOSE. Some states do not allow disclaimer of express or implied warranties in certain transactions; therefore, this statement may not apply to you.

This publication could include technical inaccuracies or typographical errors. Changes are periodically made to the information herein; these changes will be incorporated in later editions. Improvements or changes in the products or the programs described may be made at any time.

Comments about this publication may be addressed to Lexmark International, Inc., Department F95/032-2, 740 West New Circle Road, Lexington, Kentucky 40550, U.S.A. In the United Kingdom and Eire, send to Lexmark International Ltd., Marketing and Services Department, Westhorpe House, Westhorpe, Marlow Bucks SL7 3RQ. Lexmark may use or distribute any of the information you supply in any way it believes appropriate without incurring any obligation to you. You can purchase additional copies of publications related to this product by calling 1-800-553-9727. In the United Kingdom and Eire, call 0628-481500. In other countries, contact your point of purchase.

References in this publication to products, programs, or services do not imply that the manufacturer intends to make these available in all countries in which it operates. Any reference to a product, program, or service is not intended to state or imply that only that product, program, or service may be used. Any functionally equivalent product, program, or service that does not infringe any existing intellectual property right may be used instead. Evaluation and verification of operation in conjunction with other products, programs, or services, except those expressly designated by the manufacturer, are the user's responsibility.

Lexmark and Lexmark with diamond design are trademarks of Lexmark International, Inc., registered in the United States and/or other countries.

Color Jetprinter is a trademark of Lexmark International, Inc.

Other trademarks are the property of their respective owners.

© Copyright 2002 Lexmark International, Inc. All rights reserved.

UNITED STATES GOVERNMENT RESTRICTED RIGHTS

This software and documentation are provided with RESTRICTED RIGHTS. Use, duplication or disclosure by the Government is subject to restrictions as set forth in subparagraph (c)(1)(ii) of the Rights in Technical Data and Computer Software clause at DFARS 252.227-7013 and in applicable FAR provisions: Lexmark International, Inc., Lexington, KY 40550.

Federal Communications Commission (FCC) Compliance information statement

The Lexmark Z54 Color Jetprinter, Type 4111-005 has been tested and found to comply with the limits for a Class B digital device, pursuant to Part 15 of the FCC Rules. Operation is subject to the following two conditions: (1) this device may not cause harmful interference, and (2) this device must accept any interference received, including interference that may cause undesired operation.

The FCC Class B limits are designed to provide reasonable protection against harmful interference in a residential installation. This equipment generates, uses and can radiate radio frequency energy and, if not installed and used in accordance with the instructions, may cause harmful interference to radio communications. However, there is no guarantee that interference will not occur in a particular installation. If this equipment does cause harmful interference to radio or television reception, which can be determined by unplugging the equipment and then plugging it back in, the user is encouraged to try to correct the interference by one or more of the following measures:

- Reorient or relocate the receiving antenna.
- Increase the separation between the equipment and receiver.
- Connect the equipment into an outlet on a circuit different from that to which the receiver is connected.
- Consult your point of purchase or service representative for additional suggestions.

The manufacturer is not responsible for any radio or television interference caused by using other than recommended cables or by unauthorized changes or modifications to this equipment. Unauthorized changes or modifications could void the user's authority to operate this equipment.

Note: To assure compliance with FCC regulations for a Class B computing device, use a properly shielded and grounded cable such as Lexmark part number 12A2405 for USB attach. Use of a substitute cable not properly shielded and grounded may result in a violation of FCC regulations.

Any questions regarding this compliance information statement should be directed to Director of Lab Operations, Lexmark International, Inc., 740 New Circle Road NW, Lexington, KY 40550, (859) 232-3000.

ENERGY STAR

The EPA ENERGY STAR office equipment program is a partnership effort with computer manufacturers to promote the introduction of energy-efficient products and to reduce air pollution caused by power generation.

Companies participating in this program introduce personal computers, printers, monitors, or fax machines that power down when they are not being used. This feature will cut the energy used by up to 50 percent. Lexmark is proud to be a participant in this program.

As an ENERGY STAR Partner, Lexmark International, Inc. has determined that this product meets the ENERGY STAR guidelines for energy efficiency.

Industry Canada compliance statement

This Class B digital apparatus meets all requirements of the Canadian Interference-Causing Equipment Regulations.

Avis de conformité aux normes d'Industrie Canada

Cet appareil numérique de la classe B respecte toutes les exigences du Règlement sur le matériel brouilleur du Canada.

European Community (EC) directives conformity

This product is in conformity with the protection requirements of EC Council directives 89/336/EEC and 73/23/EEC on the approximation and harmonization of the laws of the Member States relating to electromagnetic compatibility and safety of electrical equipment designed for use within certain voltage limits.

A declaration of conformity with the requirements of the Directive has been signed by the Director of Manufacturing and Technical Support, Lexmark International, S.A., Boigny, France.

This product satisfies the Class B limits of EN 55022 and safety requirements of EN 60950.

The United Kingdom Telecommunications Act 1984

This apparatus is approved under the approval number NS/G/1234/J/100003 for the indirect connections to the public telecommunications systems in the United Kingdom.

Safety information

- Use only the Lexmark power supply provided with this product or an authorized Lexmark replacement power supply.
- Connect the power cord to an electrical outlet that is near the product and easily accessible.
- Refer service or repairs, other than those described in the manual, to a professional service person.

Contents

- Setting up your printer 1**
 - Step 1: Make sure your computer is on2
 - Step 2: Check the printer parts2
 - Step 3: Connect the power supply3
 - Step 4: Connect the USB cable4
 - Step 5: Install the print cartridges4
 - Step 6: Load the paper6
 - Step 7: Install the printer software7

- Printing for fun 11**
 - Printing a digital photo on a photo card (Windows) 12
 - More fun printing ideas 14

- Learning about your printer 15**
 - Understanding the printer parts 15
 - Using the software to select your printer settings 16
 - Using the software to meet your printing needs 18
 - Finding the printer software Help 19

- Troubleshooting 21**
 - Troubleshooting checklist21
 - Setup troubleshooting23
 - Windows23
 - Macintosh26
 - Contacting Lexmark28

- Index 29**

Setting up your printer

This booklet takes you step by step from setup through printing your first document using Windows 98, Windows Me, Windows 2000, Windows XP, Mac OS 8.6 to 9.2, or Mac OS X version 10.0.3 to 10.1.

To set up your Lexmark™ Z54 Color Jetprinter™, you will need:

- A computer with a CD-ROM drive and USB port
- A USB cable (such as Lexmark P/N 12A2405), purchased separately
- A4 or letter size paper

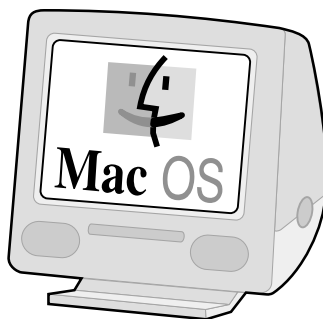
See page 28 for information about contacting Lexmark.

Step 1: Make sure your computer is on



Windows 98/Me/2000

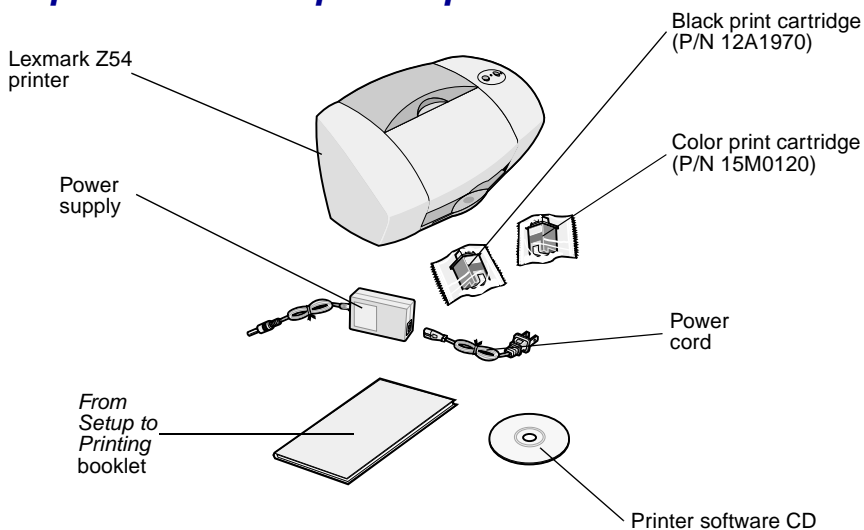
Windows XP



Mac OS 8.6 to 9.2

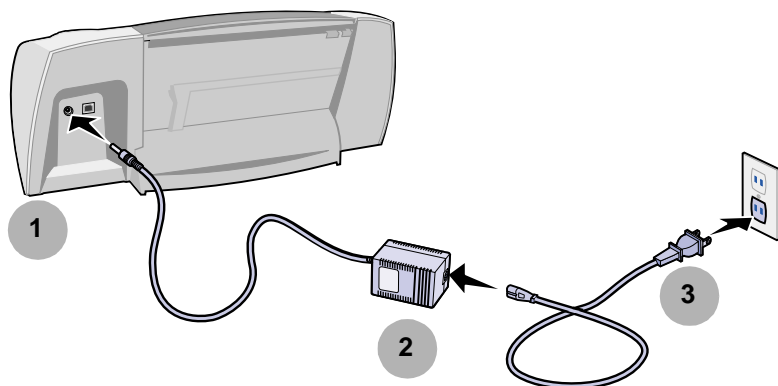
**Mac OS X version
10.0.3 to 10.1**

Step 2: Check the printer parts



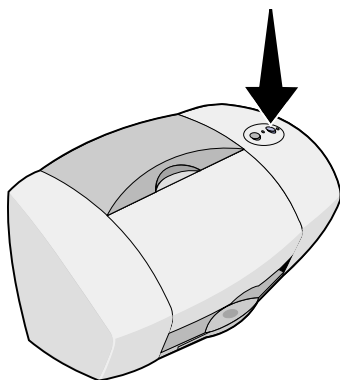
If any items are missing, contact Lexmark (see page 28).

Step 3: Connect the power supply

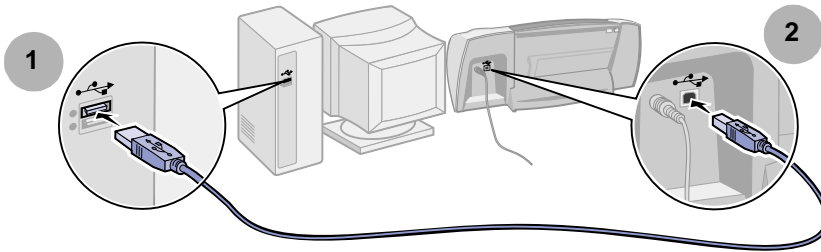


If the power light does **not** come on:

- 1** Check the power supply connections.
- 2** Press the power button.



Step 4: Connect the USB cable



Note: The location and orientation of the USB port on your computer may be different from the one shown. Look for this symbol:



Step 5: Install the print cartridges

Your printer came with a color print cartridge (P/N 15M0120) and a black print cartridge (P/N 12A1970).

You can print with:

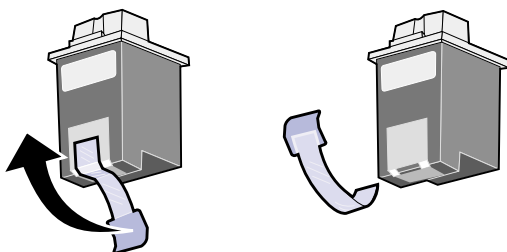
- A color cartridge in the left carrier and a black cartridge in the right carrier.
- A color print cartridge in the left carrier and a photo cartridge in the right carrier.

You can purchase a photo cartridge (P/N 12A1990), a high yield color cartridge (P/N 15M0125), or a high yield black cartridge (P/N 12A1975) separately.

- 1 Remove each cartridge from its packaging.

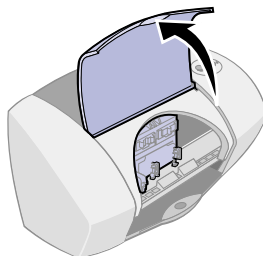


- 2 Remove the sticker and transparent tape from the back and bottom of both cartridges.



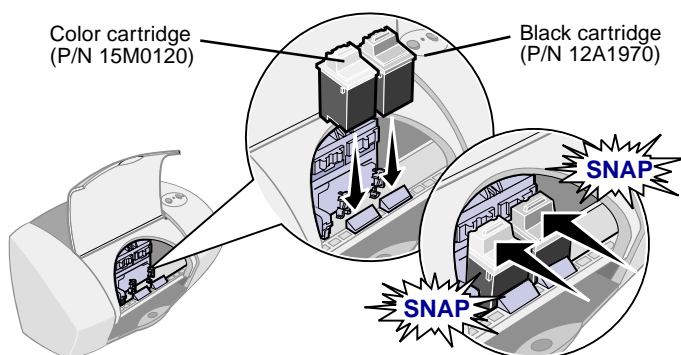
Warning: Do **not** touch or remove the gold contact areas on the back and bottom of the print cartridges.

- 3 Open the front cover.

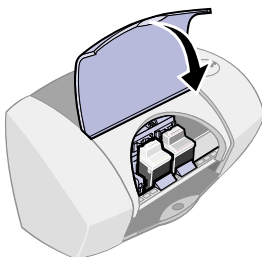


Note: The cartridge carrier moves to the loading position.

- 4 Insert the color cartridge in the left carrier and snap it into place. Insert the black cartridge in the right carrier and snap it into place.

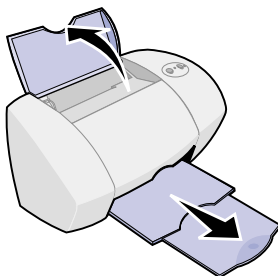


- 5 Close the front cover.

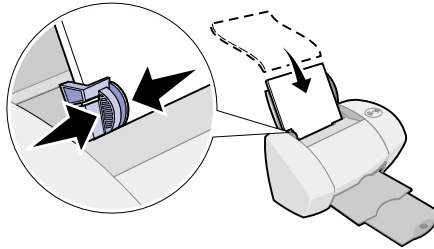


Step 6: Load the paper

- 1 Open the paper support and fully extend the paper exit tray.



- 2 Load up to 100 sheets of plain inkjet paper, and then squeeze and slide the paper guide to the left edge of the paper.



Step 7: Install the printer software

Follow all of the steps for your operating system.

Operating system:	Page:
Windows 98/Me/2000 and Windows XP	8
Mac OS 8.6 to 9.2	9
Mac OS X version 10.0.3 to 10.1	10

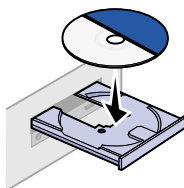
Note: Your software screens may be different from the ones shown in this booklet. The arrows show you where to click.

Windows

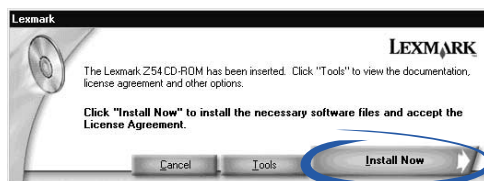
- 1 Click **Cancel** on any screens similar to the one shown.



- 2 Insert the printer software CD.



- 3 Wait for the Lexmark printer software installation screen to appear, and then click **Install Now**.



Note: If this screen does not appear, see page 23.

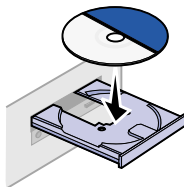
- 4 Continue with the installation steps on your computer screen.

Congratulations!

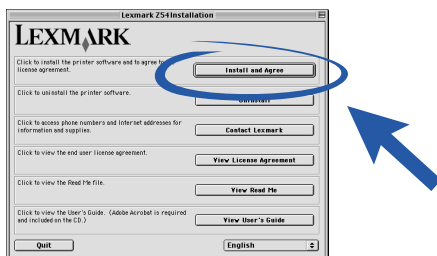
Now that you have successfully set up your printer and installed the printer software, continue with “Learning about your printer” on page 15.

Mac OS 8.6 to 9.2

- 1 Quit all software applications not in use.
- 2 Insert the printer software CD.



- 3 Wait for the Lexmark Installation dialog box to appear, and then click Install and Agree.



Note: If this screen does **not** appear, see page 26.

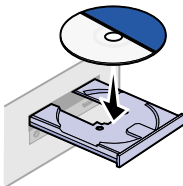
- 4 Continue with the installation steps on your computer screen.

Congratulations!

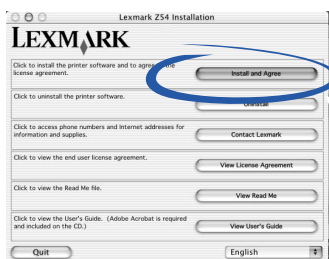
Now that you have successfully set up your printer and installed the printer software, continue with "Learning about your printer" on page 15.

Mac OS X version 10.0.3 to 10.1

- 1 Quit all software applications not in use.
- 2 Insert the printer software CD.



- 3 Wait for the Lexmark printer software installation screen to appear, and then click Install and Agree.



Note: If this screen does **not** appear, see page 26.

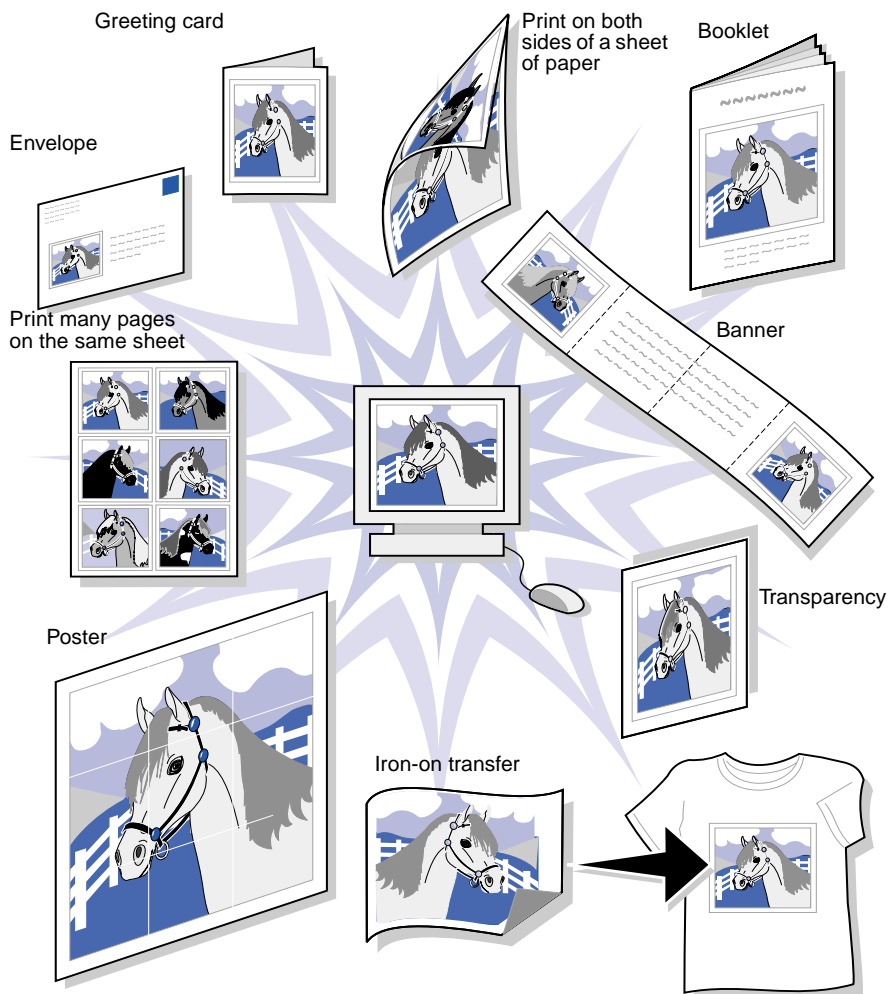
- 4 Continue with the installation steps shown on your screen.

Congratulations!

Now that you have successfully set up your printer and installed the printer software, continue with "Learning about your printer" on page 15.

Printing for fun

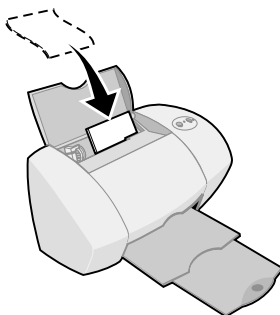
To learn how to print a photo card using **Windows** operating system, see page 12. For information about printing other projects, see page 14.



Note: The printer software for your operating system may not support all of these features.

Printing a digital photo on a photo card (Windows)

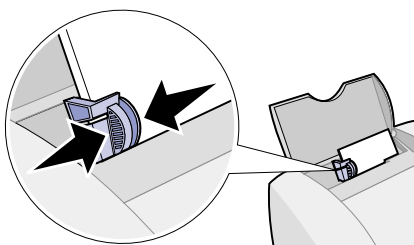
- 1** Load up to 10 photo cards vertically against the right side of the paper support.



When you load photo cards, make sure:

- You carefully read the instructions that came with your cards.
- The print side is facing you.
- You do not push the cards too far into the printer.
- All the cards have the same dimensions.

- 2** Squeeze and slide the paper guide to the left edge of the cards.



- 3 Open your digital photo in your photo application.



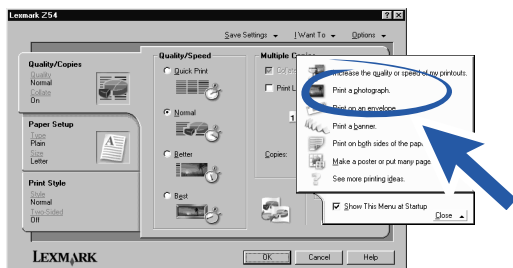
- 4 Open the Print properties from your software application.

Windows 98/Me and Windows XP: From the file you want to print, click File ► Print ► Properties or Preferences.

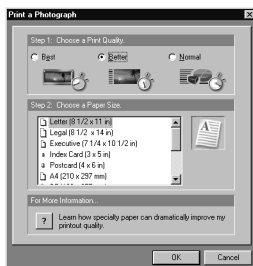
Windows 2000: From the file you want to print, click File ► Print. From the Printer Settings tab, click Change.

Note: For some software applications in Windows 2000/Me and Windows XP, follow the instructions for Windows 98 to open Printing Preferences or Printing Properties.

- 5 From the I Want To menu, click Print a photograph.



The Print a photograph screen appears.



- 6 From Step 1 on the screen, select a print quality.
- 7 From Step 2 on the screen, select a paper size, and then click OK.
- 8 From Print Properties, click OK.
- 9 From the Print screen, click OK or print.
- 10 To prevent smudging, remove each photo as it exits the printer and let it dry completely before stacking.

More fun printing ideas

To learn how to print special projects using your operating system, follow these steps.

Windows	Macintosh
<ol style="list-style-type: none">1 Refer to the Lexmark Z54 Solution Center (see page 18).2 Click the “Printing ideas” tab.	<ol style="list-style-type: none">1 Refer to the <i>Online User’s Guide</i> (see page 18).2 Click the “Printing ideas” link in the left navigation area.

Learning about your printer

Understanding the printer parts

Paper support
Holds paper upright.

Paper guide
Position next to paper for proper feeding.

Paper feed button and light
Press to load paper, eject paper, or continue printing.



Power button and light
Press to turn printer on or off.

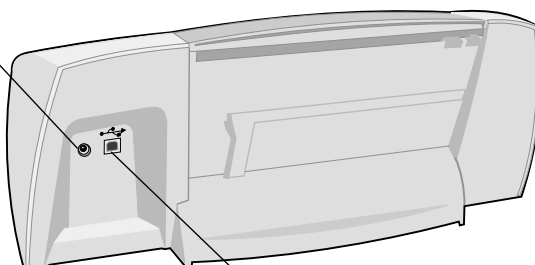
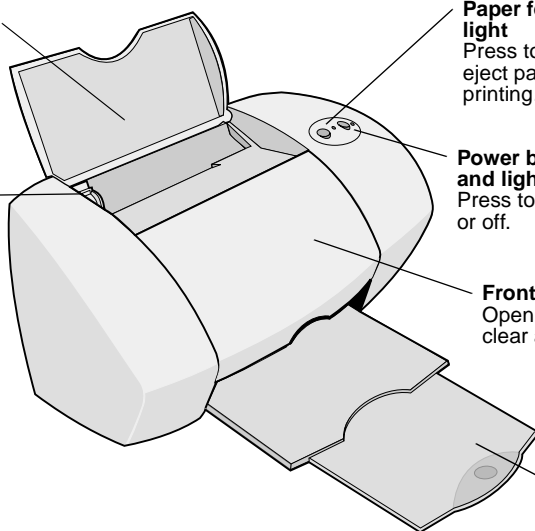


Front cover
Open to install cartridges or clear a paper jam.

Paper exit tray
Holds paper as it exits.

Power supply connector

USB cable connector



Using the software to select your printer settings

Print Properties (Windows only)

With your document open, click File ►
Print ► Properties or Preferences.

The **Quality/Copies, Paper Setup, and Print Style** tabs let you adjust your printer settings.

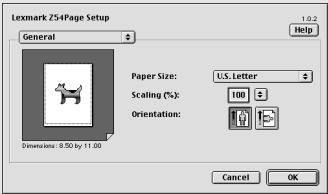
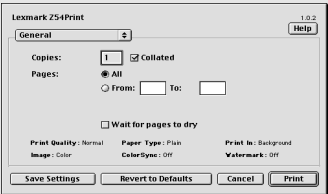


I Want To menu
This online, easy-to-use projects menu helps you print photos, banners, envelopes, posters, and much more.

Print dialog box and Page Setup dialog box (Macintosh only)

With your document open,
click File ► Print.

With your document open,
click File ► Page Setup.



Note: Your software screens may appear slightly different from the ones shown depending on your operating system.

Use the following table to select a print quality or paper type setting:

Windows	Macintosh
1 With your document open, click File ► Print ► Properties or Preferences.	1 With your document open, click File ► Print to open the Print dialog box.
2 From the Quality/Copies tab, select a print quality setting.	2 From the pop-up menu in the upper left, choose Paper Type/Quality or Quality & Media.
3 From the Paper Setup tab, select a paper type setting.	3 Select a print quality setting.
	4 Select a paper type setting.

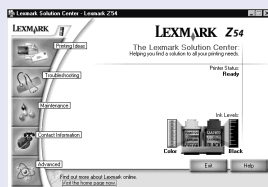
The following table lists the print quality settings and paper recommendations:

Print quality	Paper recommendation
Quick Print	Plain inkjet, multi-purpose, office, or xerographic
Normal	Plain or premium inkjet, multi-purpose, office, xerographic, iron-on transfer, or transparency
Better	Premium inkjet, transparency, coated, glossy, or photo
Best	Transparency, coated, glossy, or photo

Using the software to meet your printing needs

Lexmark Solution Center (Windows only)

From your desktop, double-click the Lexmark Z54 Solution Center icon, or click Start ► Programs or All Programs ► Lexmark Z54 ► Lexmark Z54 Solution Center.

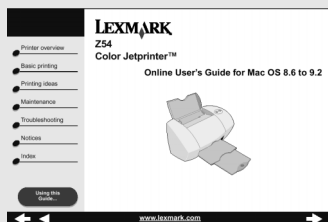


The Lexmark Solution Center is your complete guide to troubleshooting, cartridge alignment and maintenance, printing a test page, and the advanced features of your printer.

Online User's Guide (Macintosh)

Mac OS 8.6 to 9.2:

From the Lexmark Z54 printer folder, double-click the Lexmark Z54 Users Guide.pdf icon.



The *Online User's Guide* gives detailed information about basic printing, cartridge alignment and maintenance, and troubleshooting.

Mac OS X version 10.0.3 to 10.1:

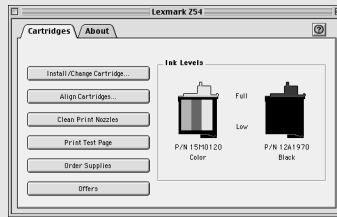
- 1 From the Finder, click Computer, and then double-click the: OS X Disk icon ► Library folder ► Printers folder ► Lexmark folder.
- 2 Double-click the Lexmark Z54 Users Guide.pdf icon.

Lexmark Z54 Control Panel (Mac OS 8.6 to 9.2)

Lexmark Z54 Utility (Mac OS X version 10.0.3 to 10.1)

Mac OS 8.6 to 9.2

- 1 From the Apple menu, choose Control Panels.
- 2 Choose the Control Panel for your printer.



The Lexmark Z54 Control Panel or the Lexmark Z54 Utility is your complete guide to cartridge alignment and maintenance, printing a test page, obtaining information about your printer, and ordering supplies.

Mac OS X version 10.0.3 to 10.1

- 1 From the Finder, click Computer, and then double-click the: OS X disk icon ► Library folder ► Printers folder ► Lexmark folder.
- 2 Double-click the Lexmark Z54 Utility icon.

Finding the printer software Help

For help solving printing problems, see “Troubleshooting” on page 21. For additional help, see your operating system in the following table.

Windows	Mac OS 8.6 to 9.2	Mac OS X version 10.0.3 to 10.1
From any tab of Print Properties or the Lexmark Z54 Solution Center, click Help. For help opening the Lexmark Z54 Solution Center, see page 18.	<ul style="list-style-type: none"> • From the Apple menu, choose Control Panels ► Lexmark Z54 Control Panel. Click the ?. • From the Page Setup or Print dialog box, click Help. 	<ol style="list-style-type: none"> 1 From the Dock, click the Finder icon. 2 From the menu bar, click Help ► Mac Help. 3 Click the back arrow, and then click Lexmark Z54 Help.

Troubleshooting

Troubleshooting checklist

- ☒ Is the power supply firmly attached to your printer and an electrical outlet? For help, see page 3.
- ☒ Are both your printer and computer on? For help, see page 3.
- ☒ Is your USB cable securely attached to your computer and to your printer? For help connecting the USB cable, see page 4.
- ☒ Did you remove the sticker and transparent tape from both print cartridges? Make sure you do not touch or remove the gold contact area from the back and bottom of the print cartridges. For help, see page 5.
- ☒ Is the black cartridge (P/N 12A1970) in the right carrier and the color cartridge (P/N 15M0120) in the left carrier? For help, see page 6.
- ☒ Is the paper loaded correctly? Make sure you do not push the paper too far into the printer. For help, see page 6.
- ☒ Did you install your printer software correctly?

Windows	Mac OS 8.6 to 9.2	Mac OS X version 10.0.3 to 10.1
From your desktop, click Start ► Programs or All Programs. If Lexmark Z54 does not appear in your list of programs, install the printer software (see page 8).	From the Apple menu, choose Control Panels. If the Lexmark Z54 Control Panel does not appear, install the printer software (see page 9).	From the Finder, click Computer, and then double-click the: OS X disk icon ► Library folder ► Printers folder ► Lexmark folder. If the Lexmark Z54 Utility folder does not appear, install the printer software (see page 10).

- ☒ Did an alignment page print during setup? If **not**, make sure:
- You installed the print cartridges correctly (see page 4).
 - You follow the instructions on any error message on your computer screen.
- ☒ Is your printer connected directly to your computer? If **not**, follow these steps:
- 1** Disconnect your printer from any external devices, such as a hub, switch box, scanner, or fax machine, and then connect it directly to your computer with a USB cable.
 - 2** Print a test page following the instructions for your operating system.

Windows	Mac OS 8.6 to 9.2	Mac OS X version 10.0.3 to 10.1
<ol style="list-style-type: none"> 1 From your desktop, double-click the Lexmark Z54 Solution Center icon. 2 From the Troubleshooting tab, click Print a Test Page. 	<ol style="list-style-type: none"> 1 From the Apple menu, choose Control Panels ▶ Lexmark Z54 Control Panel. 2 Click Print Test Page. 	<ol style="list-style-type: none"> 1 Open the Lexmark Z54 Utility folder (see page 19). 2 From the Cartridges tab, click Print Test Page.

- If the test page prints, the problem may be with your attached device, not your printer. Check the documentation that came with your attached device for help.
- If the test page does not print, access the printer software Help (see page 19) for further troubleshooting information.

Setup troubleshooting

Refer to the Lexmark Solution Center (see page 18) or the Online User's Guide (see page 18) for help solving problems you may have after setting up your printer, such as:

- Slow print speed or poor print quality
- Paper misfeeds or jams
- Error messages or flashing lights

Use this chapter for help solving problems you may have while setting up your printer.

For this operating system:	See page:
Windows	23
Macintosh	26

Windows

When I inserted the printer software CD, nothing happened.

- 1** Close all open software applications.
- 2** Restart your computer.
- 3** Make sure you click Cancel on any screens similar to the one in step 1 on page 8.
- 4** Eject and reinsert the printer software CD.
- 5** From your desktop, double-click My Computer.
- 6** Double-click your CD-ROM drive icon. If necessary, double-click setup.exe.
- 7** Continue with step 3 on page 8.

The printer is not working.

Try the following:

- Check the printer status:

Windows 98/Me/2000	Windows XP
<ol style="list-style-type: none">1 From the Start menu, select Settings ► Printers.2 From the Printers folder, double-click the Lexmark Z54 printer icon.3 From the Printer menu, make sure:<ul style="list-style-type: none">– Default Printer is selected.– Pause Printing is not selected.	<ol style="list-style-type: none">1 Click Start ► Control Panel ► Printers and Other Hardware ► Printers and Faxes.2 From the Printers folder, double-click the Lexmark Z54 printer icon.3 From the Printer menu, make sure:<ul style="list-style-type: none">– Default Printer is selected.– Pause Printing is not selected.

- Check the printer port:

Windows 98/Me	Windows 2000	Windows XP
<ol style="list-style-type: none">1 Click Start ► Settings ► Printers.2 Right-click the Lexmark Z54 printer icon, and then click Properties.3 Click the Details tab.4 From the Ports drop-down menu, check the printer port. If the USB port is not listed, uninstall and then reinstall the printer software.5 Click OK.	<ol style="list-style-type: none">1 Click Start ► Settings ► Printers.2 Right-click the Lexmark Z54 printer icon, and then click Properties.3 Click the Ports tab.4 From the list of ports, select the USB printer port. If the USB port is not listed, uninstall and then reinstall the printer software.5 Click Apply.6 Click OK.	<ol style="list-style-type: none">1 Click Start ► Control Panel ► Printers and Other Hardware ► Printers and Faxes.2 Click the Ports tab.3 From the list of ports, select the USB printer port. If the USB port is not listed, uninstall and then reinstall the printer software.4 Click Apply.5 Click OK.

- Make sure you have not installed multiple copies of the printer software:

a Windows 98/Me/2000: From the Start menu, click Settings ► Printers.

Windows XP: From the Start menu, click Control Panel ► Printers and Other Hardware ► Printers and Faxes.

b In the Printers folder, make sure there is only one Lexmark Z54 printer icon.

If you have installed multiple copies of the printer software, uninstall each copy. Then restart the computer and reinstall the printer software.

If the printer port is incorrect or you have installed multiple copies of the printer software, uninstall and then reinstall the printer software:

- 1** From the Start menu, click Programs or All Programs ► Lexmark Z54 ► Uninstall.
- 2** Follow the instructions on your screen to uninstall the printer software.
- 3** Restart your computer.
- 4** Reinstall the printer software (see page 8).

The paper feed light is blinking.

- If the printer is out of paper, load paper. For help, see page 6.
- If the printer has a paper jam, remove the jam and make sure you load the paper correctly. For help, see page 6.
- Follow the instructions on any error message that appears on your computer screen. Click the ? on the error message for help.

Macintosh

When I inserted the printer software CD, nothing happened.

- 1** Make sure the Lexmark Z54 printer software CD is in your CD-ROM drive.
- 2** From your desktop, double-click the Lexmark Z54 CD icon.
- 3** From the CD folder, double-click the Install icon.
- 4** **Mac OS 8.6 to 9.2:** Continue with step 3 on page 9.

Mac OS X version 10.0.3 to 10.1: Continue with step 3 on page 10.

The printer is not working.

Make sure your USB cable is securely connected, the printer power cord is plugged in, and the power light is on. If your printer is still not working, follow the steps for your operating system.

Mac OS 8.6 to 9.2

- 1** From the Apple menu, choose Chooser.
- 2** In the left window of Chooser, highlight your Lexmark Z54 printer.

If your printer does not appear in the left window of Chooser, install the printer software (see page 9).
- 3** In the Connect to: box, select the Lexmark Z54 printer icon.

If it is **not** listed, check your USB cable connection, and repeat step 2 and step 3.
- 4** Click the box at the top left to close Chooser.
- 5** When the Page Setup message dialog box appears, click OK.
- 6** From the desktop, highlight the Lexmark Z54 printer icon.
- 7** From the menu bar, choose Printing.
- 8** Make sure Set Default Printer and Start Print Queue are both selected.

Mac OS X version 10.0.3 to 10.1

- 1 From the Dock, click the Finder icon.
- 2 From the Finder window, click the Applications button in the toolbar.
- 3 Double-click the Utilities folder.
- 4 Double-click the Print Center icon.
- 5 From the Printers menu, choose View Printers.

If your printer is **not** listed, check your USB cable connection (see page 4).
- 6 Select your Lexmark Z54 printer in the Printer List.
- 7 From the Printers menu, choose Make Default.
- 8 From the Printers menu, choose Show Queue, if available.
- 9 From the Queue menu, choose Start Queue, if available.
- 10 Select your print job.
- 11 Click Retry or Resume.

The paper feed light is blinking.

- If the printer is out of paper, load paper. For help, see page 6.
- If the printer has a paper jam, remove the jam and make sure you load the paper correctly. For help, see page 6.
- Follow the instructions on any error message that appears on your computer screen.

Contacting Lexmark

Visit our Web site at www.lexmark.com to:

- Receive technical support.
- Register your printer.
- Access publications for your printer.
- Check for free offers.

See the table for other ways to contact Lexmark.

Windows	Mac OS 8.6 to 9.2	Mac OS X version 10.0.3 to 10.1
<ul style="list-style-type: none">• From the Lexmark Solution Center, click Contact Information ► Customer Support.• Insert the printer software CD, and then click Contact Lexmark ► Technical Support.	<ul style="list-style-type: none">• From your printer folder, double-click Technical Support.• Insert the printer software CD, and then click Contact Lexmark.	<ul style="list-style-type: none">• Insert the printer software CD, and then click Contact Lexmark.• From the Lexmark Z54 Utility, click Contacting Lexmark.

Index

A

- adjusting paper guide 7
- alignment page, troubleshooting . . . 22

C

- cartridge part numbers 4
- cartridges, installing 4
- checklist, troubleshooting 21
- connecting
 - the power supply 3
 - the USB cable 4
- contacting Lexmark 28
- Control Panel (Mac OS 8.6 to 9.2) . . 19

F

- FCC statement ii

H

- Help, finding 19

I

- I Want To menu (Windows) 16
- installing
 - cartridges 4
 - printer software 7
 - Mac OS 10.0.3 to 10.1 10
 - Mac OS 8.6 to 9.2 9
 - Windows 8

L

- Lexmark Solution Center (Windows) . 18
- Lexmark Z54 Utility (Mac OS X 10.0.3 to 10.1) 19
- loading
 - paper 6
 - photo cards 12

N

- notices
 - edition notice ii
 - Energy Star ii
 - European Community (EC) directives conformity ii
 - Federal Communications Commission (FCC) Compliance information statement ii
 - Industry Canada compliance statement ii
 - safety information ii
 - The United Kingdom Telecommunications Act 1984 . . ii

O

- Online User's Guide* (Macintosh) . . 18

P

- Page Setup dialog box (Macintosh) . 16
- paper
 - guide, adjusting 7
 - jam 25, 27
 - loading 6
 - recommendations 17
 - type settings, accessing 17
- photo cards, loading 12
- Print dialog box (Macintosh) 16
- Print Properties (Windows) 16
- print quality settings, selecting 17
- printer parts
 - front cover 15
- paper
 - exit tray 15
 - feed button and light 15
 - guide 7, 15
 - support 15
- power
 - button 3

button and light	15
cord	2
supply	2
supply connector	15
USB cable connector	15
printer software	
accessing Help	19
installing	7
Mac OS 10.0.3 to 10.1	10
Mac OS 8.6 to 9.2	9
Windows	8
Macintosh	
Control Panel (Mac OS 8.6 to 9.2)	
19	
Lexmark Z54 Utility (Mac OS X	
10.0.3 to 10.1)	19
<i>Online User's Guide</i>	18
Page Setup dialog box	16
Print dialog box	16
uninstalling (Windows)	25
Windows	
I Want To menu	16
Lexmark Solution Center ...	18
Print Properties	16
printer software CD, troubleshooting	
Macintosh	26
Windows	23
printing	
a photo (Windows)	12
a test page	22
special projects	11

R

recommendations, paper	17
------------------------------	----

S

safety information	ii
special projects, printing	11

T

test page	22
troubleshooting	
alignment page	22

attached devices	22
cartridges	21
checklist	21
installation screen did not appear	
Macintosh	26
Windows	23
installing software	
Mac OS 8.6 to 9.2	21
Mac OS X 10.0.3 to 10.1	21
Windows	21
loading paper	21
paper feed light blinking	
Macintosh	27
Windows	25
paper jam	25, 27
power supply	21
printer not printing	
Mac OS 8.6 to 9.2	26
Mac OS X 10.0.3 to 10.1	27
Windows	24
printer software CD	
Macintosh	26
Windows	23
test page	22
uninstalling software (Windows) .	25
USB cable, connecting	21

W

Web address, Lexmark	28
----------------------------	----

Statement of Limited Warranty

Lexmark International, Inc.
Lexington, KY

This limited warranty applies to the United States. For customers outside the U.S., refer to the country-specific warranty information that came with your product.

This limited warranty applies to this product only if it was originally purchased for your use, and not for resale, from Lexmark or a Lexmark remarketer, referred to in this statement as "Remarketer."

Limited warranty

Lexmark warrants that this product:

- Is manufactured from new parts, or new and serviceable used parts, which perform like new parts
- Is, during normal use, free from defects in material and workmanship

If this product does not function as warranted during the warranty period, contact a Remarketer or Lexmark for repair or replacement (at Lexmark's option).

If this product is a feature or option, this statement applies only when that feature or option is used with the product for which it was designed. To obtain warranty service, you may be required to present the feature or option with the product.

If you transfer this product to another user, warranty service under the terms of this statement is available to that user for the remainder of the warranty period. You should transfer proof of original purchase and this statement to that user.

Limited warranty service

The warranty period starts on the date of original purchase as shown on the purchase receipt. The warranty period ends 12 months later.

To obtain warranty service you may be required to present proof of original purchase. You may be required to deliver your product to the Remarketer or Lexmark, or ship it prepaid and suitably packaged to a Lexmark designated location. You are responsible for loss of, or damage to, a product in transit to the Remarketer or the designated location.

When warranty service involves the exchange of a product or part, the item replaced becomes the property of the Remarketer or Lexmark. The replacement may be a new or repaired item. The replacement item assumes the remaining warranty period of the original product.

Replacement is not available to you if the product you present for exchange is defaced, altered, in need of a repair not included in warranty service, damaged beyond repair, or if the product is not free of all legal obligations, restrictions, liens, and encumbrances.

Before you present this product for warranty service, remove all print cartridges, programs, data, and removable storage media (unless directed otherwise by Lexmark).

For further explanation of your warranty alternatives and the nearest Lexmark authorized servicer in your area, contact Lexmark at (407) 563-4600, or on the World Wide Web at www.lexmark.com.

Remote technical support is provided for this product throughout its warranty period. For products no longer covered by a Lexmark warranty, technical support may not be available or only be available for a fee.

Extent of limited warranty

We do not warrant uninterrupted or error-free operation of any product.

Warranty service does not include repair of failures caused by:

- Modification or attachments
- Accidents or misuse
- Unsuitable physical or operating environment
- Maintenance by anyone other than Lexmark or a Lexmark authorized servicer
- Operation of a product beyond the limit of its duty cycle
- Use of printing media outside of Lexmark specifications
- Supplies (such as ink) not furnished by Lexmark
- Products, components, parts, materials, software, or interfaces not furnished by Lexmark

TO THE EXTENT PERMITTED BY APPLICABLE LAW, NEITHER LEXMARK NOR ITS THIRD PARTY SUPPLIERS OR REMARKETERS MAKE ANY OTHER WARRANTY OR CONDITION OF ANY KIND, WHETHER EXPRESS OR IMPLIED, WITH RESPECT TO THIS PRODUCT, AND SPECIFICALLY DISCLAIM THE IMPLIED WARRANTIES OR CONDITIONS OF MERCHANTABILITY, FITNESS FOR A PARTICULAR PURPOSE, AND SATISFACTORY QUALITY. ANY WARRANTIES THAT MAY NOT BE DISCLAIMED UNDER APPLICABLE LAW ARE LIMITED IN DURATION TO THE WARRANTY PERIOD. NO WARRANTIES, EXPRESS OR IMPLIED, WILL APPLY AFTER THIS PERIOD. ALL INFORMATION, SPECIFICATIONS, PRICES, AND SERVICES ARE SUBJECT TO CHANGE AT ANY TIME WITHOUT NOTICE.

Limitation of liability

Your sole remedy under this limited warranty is set forth in this document. For any claim concerning performance or nonperformance of Lexmark or a Remarketer for this product under this limited warranty, you may recover actual damages up to the limit set forth in the following paragraph.

Lexmark's liability for actual damages from any cause whatsoever will be limited to the amount you paid for the product that caused the damages. This limitation of liability will not apply to claims by you for bodily injury or damage to real property or tangible personal property for which Lexmark is legally liable. IN NO EVENT WILL LEXMARK BE LIABLE FOR ANY LOST PROFITS,

LOST SAVINGS, INCIDENTAL DAMAGE, OR OTHER ECONOMIC OR CONSEQUENTIAL DAMAGES. This is true even if you advise Lexmark or a Remarketer of the possibility of such damages. Lexmark is not liable for any claim by you based on a third party claim.

This limitation of remedies also applies to claims against any Suppliers and Remarketers of Lexmark. Lexmark's and its Suppliers' and Remarketers' limitations of remedies are not cumulative. Such Suppliers and Remarketers are intended beneficiaries of this limitation.

Additional rights

Some states do not allow limitations on how long an implied warranty lasts, or do not allow the exclusion or limitation of incidental or consequential damages, so the limitations or exclusions contained above may not apply to you.

This limited warranty gives you specific legal rights. You may also have other rights that vary from state to state.



P/N 18H0620

E.C. 8H0020

Lexmark and Lexmark with diamond design are trademarks of Lexmark International, Inc., registered in the United States and/or other countries. Color Jetprinter is a trademark of Lexmark International, Inc.

© 2002 Lexmark International, Inc.

740 West New Circle Road

Lexington, Kentucky 40550