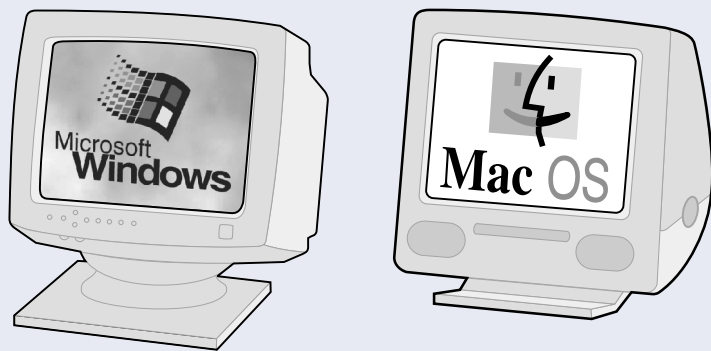
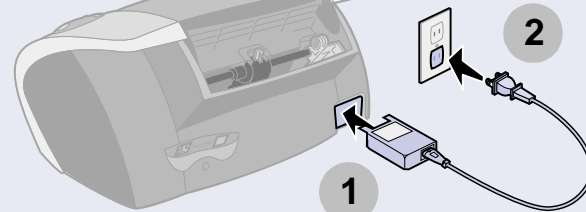


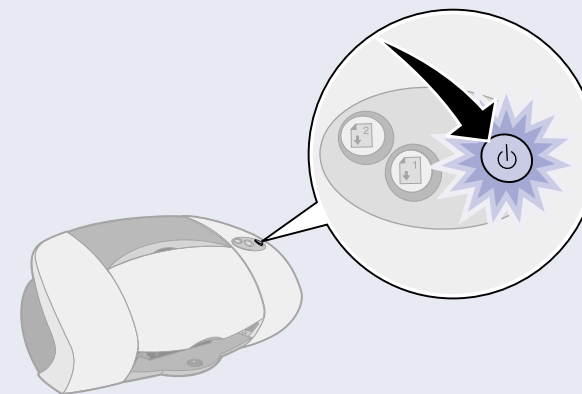
1 Make sure your computer is **on**.



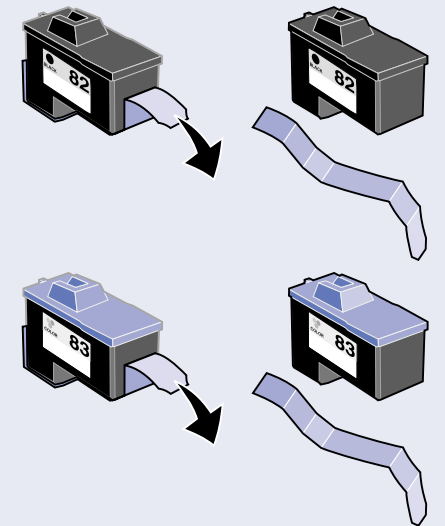
2 Connect the power supply.



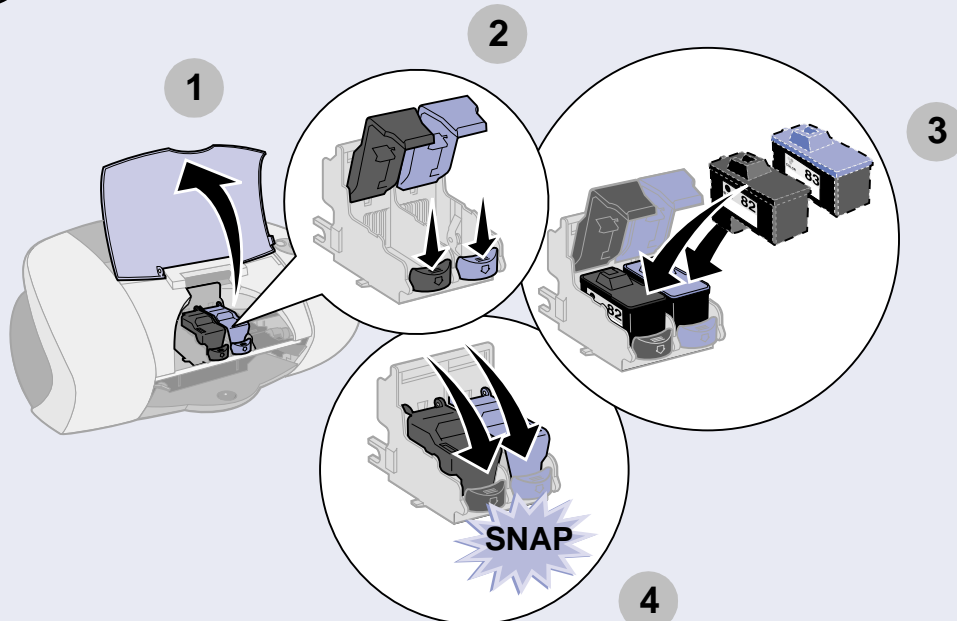
3 Make sure the power light is **on**.



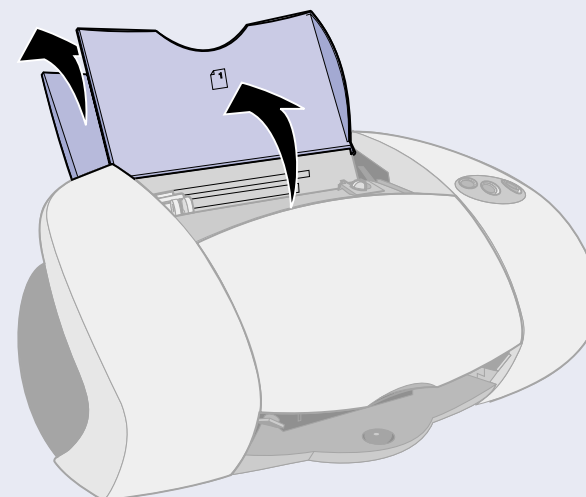
4 Remove the sticker and tape.



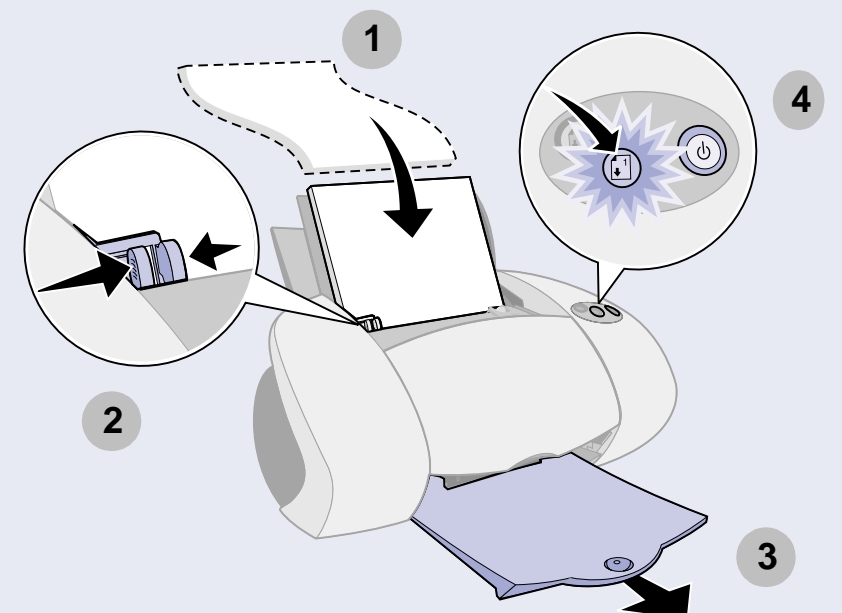
5 Open the front cover and install the cartridges.



6 Open **both** paper trays.

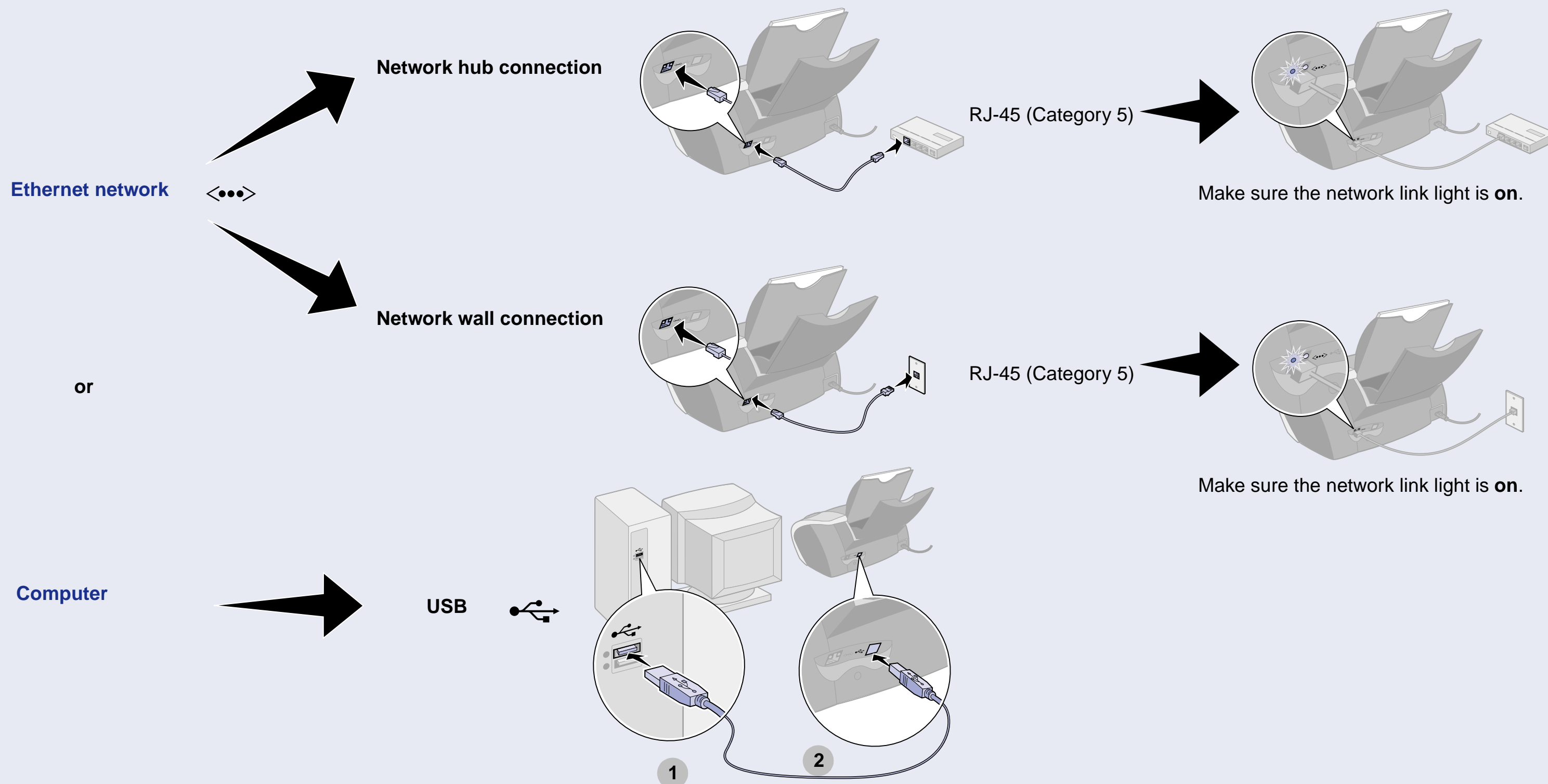


7 Load plain inkjet paper in paper tray 1 (front).



8

Connect the printer to your Ethernet network **or** to your computer.



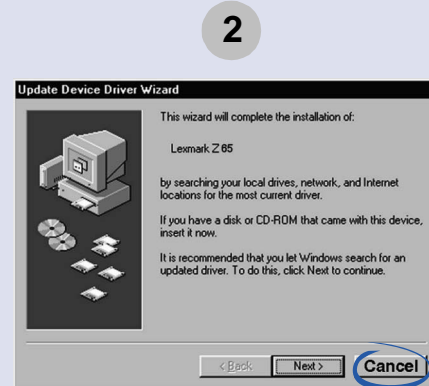
9

Follow the steps for your operating system.

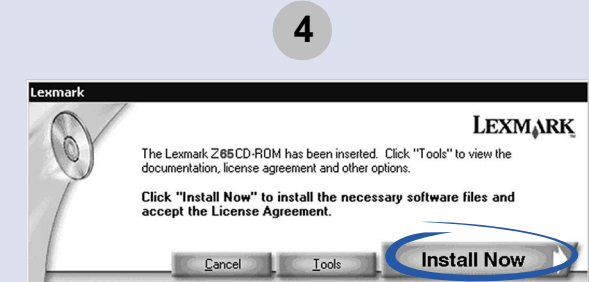
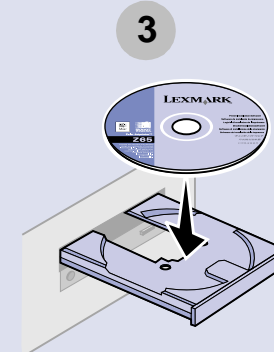
[Windows](#)[Mac OS 8.6 – 9.2](#)[Mac OS X 10.0.3 – 10.1](#)

10 Windows

1 Network users, refer to your *User's Guide* for installation instructions.



USB users, click Cancel.



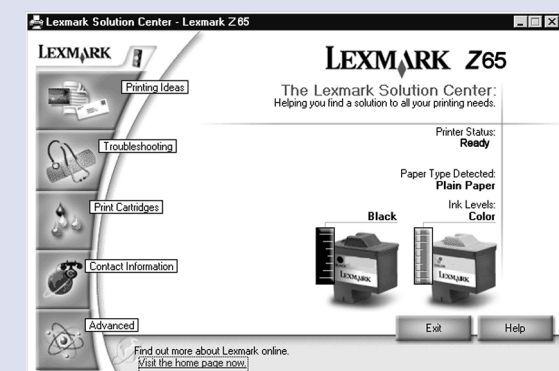
11 Follow the instructions on your screen. For help, refer to your *User's Guide*.

12 Open a document. Click **File** > **Print** > **Properties** or **Preferences**.



Now, customize your printer settings and print.

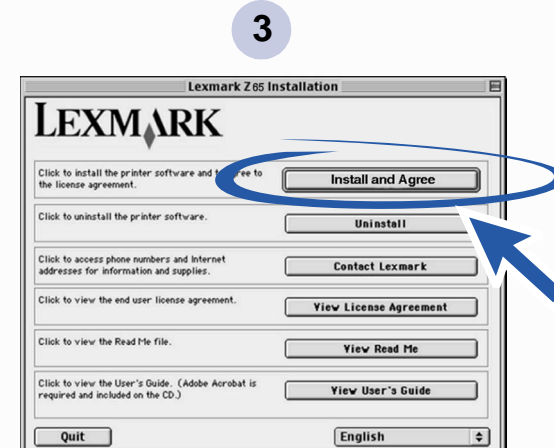
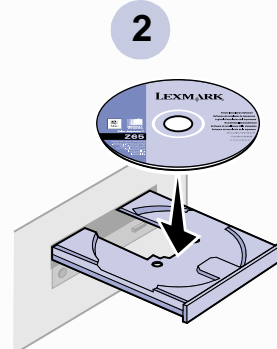
13 From the desktop, double-click:



Now, learn more about your printer.

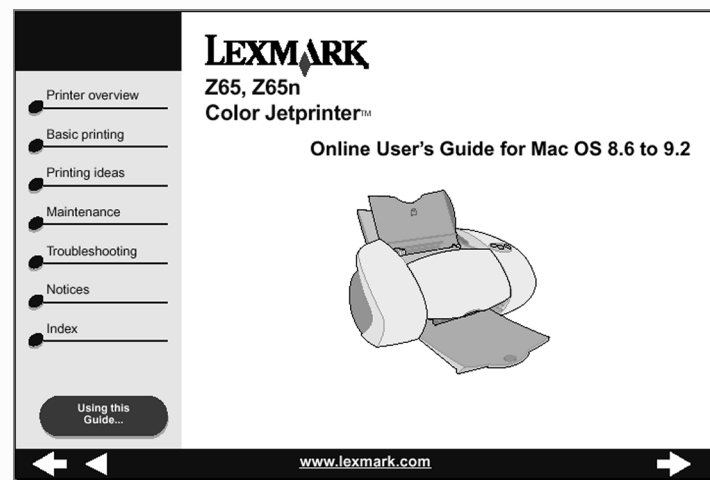
10 Mac OS 8.6 – 9.2

1 Network users, refer to your *User's Guide* for installation instructions.

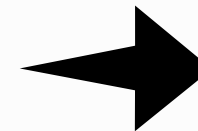


4 Follow the instructions on your screen. For help, refer to your *User's Guide*.

11



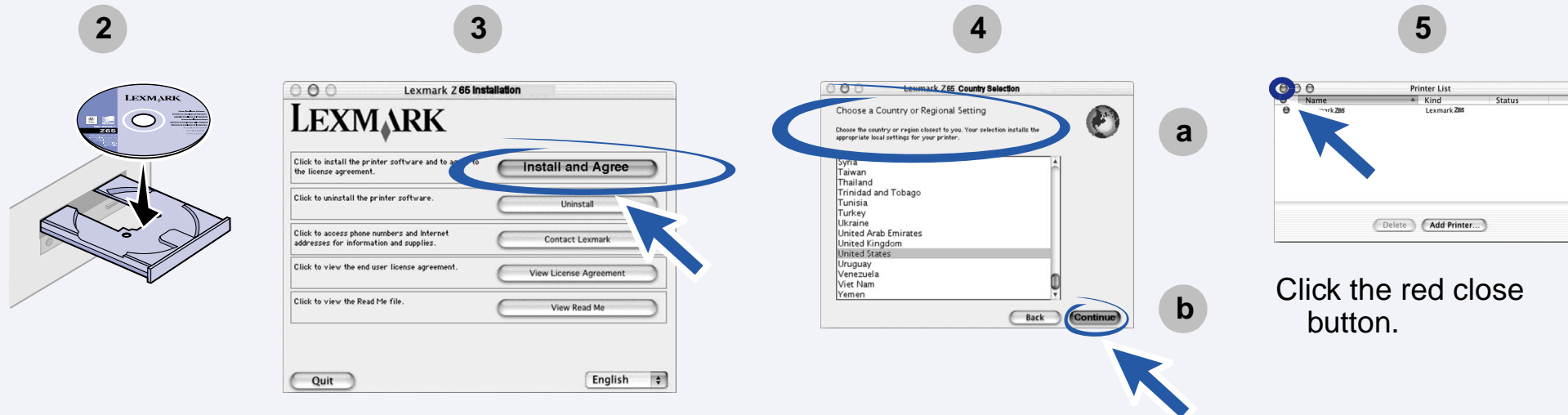
Learn more about your printer.



From the desktop, double-click the Lexmark Z65 printer folder. Then, double-click the **Lexmark Z65 Users Guide.pdf** icon.

10 Mac OS X 10.0.3 – 10.1

Network users, refer to your *User's Guide* for installation instructions.



Follow the instructions on your screen. For help, refer to your *User's Guide*.

11

From the Dock, click:



Double-click:



Double-click:



Double-click:



Double-click:



Double-click the **Lexmark Z65 Users Guide.pdf** icon.

