

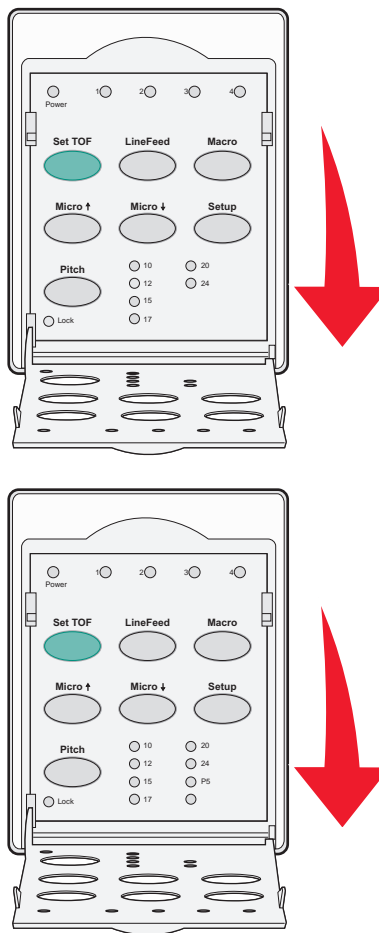
Understanding Setup mode and menu options

The printer is preset at the factory for font, pitch, form length, and other settings. These are called factory default settings. This chapter describes how to change the factory default settings, how to set up macros, and how to set form length.

Using Setup mode

Note: Make sure continuous forms are loaded in the printer when using Setup mode.

- 1 Open the control panel to access layer 2.



- 2 Press **Setup** to put the printer in Setup mode and print the Main menu.
- 3 Press **LineFeed** to print a list of available options you can change.

Printer Setup mode—Main menu

To Select	Press
Exit and Save Setup	Set TOF
Print All	LineFeed
Forms Macro Options	Macro
Data Options	Micro ↑
Control Options	Micro ↓
Emulation Options	Setup
Interface Options	Pitch

- 4 Select any option from the Main menu by pressing the corresponding button.
Note: A new menu will print each time you press a button, displaying the new selection.
- 5 After you make all your selections, the printer will print a page with your changes reflected.
- 6 Press **Set TOF** until the printer returns to the Main menu, or press **Pitch** from any menu containing a **Return to Main menu** selection.
- 7 Press **Set TOF** again to exit Setup mode.
 New settings are saved only when the printer exits Setup mode.
Note: If the printer runs out of paper while you are using Setup mode, load more paper into the Tractor pins, and then press **Setup** to continue.

Changing menu settings (an example)

Note: Make sure continuous forms are loaded in the printer when using Setup mode.

The following is an example of how to change the Menu Language setting.

- 1 With the printer in Setup mode, press **Micro ↓** to print the Control Options menu.
- 2 Press **Pitch** to print more Control Options.

Control Options	Current	Press
Return to Main menu	Off	Set TOF
Uni-Dir Printing	On	LineFeed
Auto Ready Cut Sheet	Enabled	Macro
Paper Out Alarm	Enabled	Micro ↑
Bi-Di alignment		Micro ↓
Demo Print		Setup
(More)		Pitch

3 To change the Menu Language, press **Macro**.

Control Options	Current	Press
Return to Main menu	English	Set TOF
Return to previous page	Enabled	LineFeed
Menu Language		Macro
TOF Read		Micro ↑
Quiet		Micro ↓

4 Press the button that corresponds to the language you want, or press **Setup** to print more Menu Language options.

5 For this example, press **Macro** to select French.

Menu Language	
To Select	Press
No Change	Set TOF
English	LineFeed
French	Macro
German	Micro ↑
Italian	Micro ↓
(More)	Setup
Return to Main menu	Pitch

Printer menus now print in French.

6 Press **Pitch** to return to the Main menu or press **Set TOF** (No Change) to go back one menu and change another setting.

7 If you return to the Main menu, press **Set TOF** to exit Setup mode and save the new setting.

Notes:

- New settings are saved only when the printer exits Setup mode.
- If the printer runs out of paper while you are using Setup mode, load more paper into the Tractor pins, and then press **Setup** to continue.

Setup Mode - Main menu

Main menu options

Note: Use Setup mode to configure the printer according to your needs. To print a list of all default settings, press **LineFeed** from the Main menu.

The following list items will appear at the top of the Main menu page:

Forms Macro Options

Forms Macro Options customizes macros to print a variety of forms.

Data Options

Data Options defines how information sent to the printer is processed.

Control Options

Control Options define how the printer performs many basic tasks.

Emulation Options

Emulation Options determine how the printer interacts with the program.

Interface Options

Interface Options define how information is transferred from the computer to the printer.

Forms Macro options

Note: Use Setup mode to configure the printer according to your needs. To print a list of all default settings, press **LineFeed** from the Main menu.

The following list items outline and explain the Forms Macro functions and settings you can use with the printer:

Default Macro

Default Macro lets you select the macro default you want when the printer is powered on. Select Disabled if you do not want to use a macro as the default.

Note: Enabled is the factory default setting.

Character options

Use the following options to select character option changes, as detailed:

- **Default Font**—Select the font you want from the available fonts listed.
- **Font Lock**—Select Yes to set Font Lock as the default even after the printer has been turned off and back on.
- **Default Pitch**—Select the pitch you want as the default from the available pitches listed.
Note: Not all pitches are available in all fonts.
- **Pitch Lock**—Select Yes to set Pitch Lock as the default even after the printer has been turned off and back on.
- **Code Page**—Select one of the following code pages for different language sets: 437, 850, 858, 860, 861, 863, 865, 437G, 813, 851, 853T, 857, 869, 920, 1004, or 1053.

Notes:

- Eastern European, Baltic, and Middle Eastern language code page configurations can be selected by holding down specific key combinations when the printer is turned on. For more information, see the *Technical Reference* available on the Lexmark Web site at www.lexmark.com.
- 437 is the factory default setting.

- **Character Set**—Select Character Set 1 or Character Set 2.

Note: Character Set 1 is the factory default setting for the US, and Character Set 2 is the factory default setting for the European Union.

Paper Handling Options

Use the following options to select paper handling option changes, as detailed:

- Auto Tear Off
 - **On**—Continuous forms automatically advance to the Tear Off bar position.
 - **Off**—You can manually advance the perforation of a continuous form to the Tear Off bar position.
Note: On is the factory default setting.
- Auto Cut Sheet Load
 - **On**—Cut sheet paper automatically loads to the current Top-Of-Form position.
 - **Off**—You must press **FormFeed** to load paper.
Note: On is the factory default setting.
- Auto Sheet Feeder
 - On**—Automatically loads paper if the optional Auto Sheet Feeder is installed.
Note: Off is the factory default setting.
- Form Length
 - This option lets you set the form length (in lines per page) from one line to a maximum of 22 inches.
- Left Margin
 - This option lets you set the left margin to any inch increment from 0" to 3".
- Right Margin
 - This option lets you set the right margin to any inch increment from 4" to 8". If you have a wide carriage model, the maximum right margin is 13.6".
- Lines Per Inch
 - Lets you specify the number of text lines in an inch from 3 to 6.
Note: 6 is the factory default setting.
- Eject by FF
 - **On**—Lets you eject loaded cut sheet paper by pressing **FormFeed**.
Note: On is the factory default setting.

Data options

Note: Use Setup mode to configure the printer according to your needs. To print a list of all default settings, press **LineFeed** from the Main menu.

The following list items outline and explain the Data options and settings you can use with the printer:

Buffer

- **Minimum**—Sets the receive buffer size to zero
- **Maximum**—For 2580/2581 models, sets the receive buffer size to 64KB or 480KB, depending on whether *NLQ II* (Near Letter Quality) Download is enabled
- **Maximum**—For 2590/2591 models, sets the receive buffer size to 47.5KB or 480KB, depending on whether Download is enabled

Note: Maximum is the factory default setting.

Auto LF

Requires a line feed to occur.

- **On**—A line feed is performed for each *Carrier Return* (CR) code received.
- **Off**—A line feed does not occur when a CR code is received.

Note: Off is the factory default setting.

Auto CR

Requires a CR to occur.

- **On**—A CR is performed for each line feed code received.
- **Off**—A CR does not occur when a line feed code is received.

Note: Off is the factory default setting.

Zero Slash

- **On**—The zero (0) prints with a slash down the middle.
- **Off**—The zero (0) prints without a slash down the middle.

Note: Off is the factory default setting.

Download to NLQ II (available for 2580/2581 models only)

- **Enabled**—Reserves a portion of the receive buffer for downloading fonts
- **Disabled**—Uses the entire buffer as a receive buffer

Note: Enabled is the factory default setting.

Download (available for 2590/2591 models only)

- **Enabled**—Reserves a portion of the receive buffer for downloading fonts
- **Disabled**—Uses the entire buffer as a receive buffer

Note: Enabled is the factory default setting.

Code Page Sub.

- **Enabled**—Substitutes code page 858 for 850 to allow older programs access to the European characters
- **Disabled**—No code page substitution

Note: Disabled is the factory default setting.

Control options

Note: Use Setup mode to configure the printer according to your needs. To print a list of all default settings, press **LineFeed** from the Main menu.

The following list items outline and explain the Control options and settings you can use with the printer:

Uni-Dir Printing

- **On**—The printer prints unidirectionally by line (in NLQ mode).
- **Off**—The printer prints one line and a return line of print bidirectionally. Proportional Spacing is an exception; when this pitch is selected, the printer still prints unidirectionally.

Note: Off is the factory default setting.

Auto Ready Cut Sheet

Customizes how the printer goes to the Ready state after a cut sheet is loaded.

- **On**—The printer automatically goes to the Ready state after a cut sheet is loaded.
- **Off**—The printer remains offline after a cut sheet is loaded. Press **Start/Stop** to return the printer to the Ready state.

Note: On is the factory default setting.

Paper Out Alarm

- **Enabled**—An alarm sounds when the printer runs out of paper.
- **Disabled**—No alarm sounds when the printer runs out of paper.

Note: Enabled is the factory default setting.

Demo Print

- **Enabled**—Prints a Demo page
- **Disabled**—Does not print a Demo page

Note: Enabled is the factory default setting.

Menu Language

Select the language you want the menus to print in. Available languages are: English, French, German, Italian, Spanish, and Brazilian Portuguese.

Note: English is the factory default setting.

TOF Read

- **Enabled**—Verifies the Top-Of-Form before printing begins on continuous forms
- **Disabled**—Does not verify the Top-Of-Form before printing on continuous forms

Note: Enabled is the factory default setting.

Quiet

- **Enabled**—The printer prints at a quieter noise level.
- **Disabled**—The printer prints at the normal noise level.

Note: Disabled is the factory default setting.

Note: Printing speed slows in Quiet mode.

Emulation options

Note: Enter Setup mode to configure the printer according to your needs. For more information, see “Using Setup mode” on page 48. To print a list of all default settings, press **LineFeed** from the Main menu.

Make Emulation option selections from IBM (the factory default setting), Epson, or OKI mode. For more information regarding data stream changes, see the *Technical Reference* available on the Lexmark Web site at www.lexmark.com/publications.

IBM mode

Proprinter III, available only on 2580/2581 printers, enables compatibility with the Proprinter III.

- **On**—The printer emulates a Proprinter III.
- **Off**—The printer operates with added capabilities.

AGM, available only on 2590/2591 models, lets you use the high-resolution 24-wire graphics commands. These commands are similar to those used with the Epson LQ570/LQ 1070.

- **On**—Graphics commands are available.
- **Off**—Graphics commands are not available.

Note: Off is the factory default setting.

Epson mode

- Table Select lets you select Italic Character Table or Epson Extended Graphic Character Table.

Note: Graphics is the factory default setting.

- Int'l Char Set lets you select the character set associated with the language you want to print in.

Supported international character sets for Epson mode are: USA, France, Germany, U.K., Denmark, Sweden, Italy, and Spain I.

The following character sets are also supported, but only through host commands used by Epson FX850/FX 1050: Japan, Norway, Denmark II, Korea (2580/2581 models only), Spain II, Latin America, and Legal.

Note: USA is the factory default setting.

OKI mode

OKI mode lets you select from the following functions:

- 7 or 8 Bit Graphics
- Paper Out Override
- Reset Inhibit
- Print Suppress Effective
- Print DEL Code

Interface options

Note: Use Setup mode to configure the printer according to your needs. To print a list of all default settings, press **LineFeed** from the Main menu.

The following list items outline and explain the Interface options and settings you can use with the printer:

Interface Selection

Unless turned off, the Auto setting automatically selects the printer interface from the available connection cables.

The following connection cables are available: parallel cable, USB cable, serial cable (only available when an optional serial interface is installed), and network cable (only available on network models).

Note: Auto is the factory default setting.

Honor Init.

- **Enabled**—Honors the initialization signal on the parallel port
- **Disabled**—Ignores the initialization signal on the parallel port

Note: Enabled is the factory default setting.