



Disassembly of Waste Electrical and Electronic Equipment (WEEE) Manual

EU Waste Electronic and Electrical Equipment Directive require producers to provide information of the different electronic and electrical materials and components found in their products at its end-of-life, and disassembly references to treatment and recycling facilities.

The disassembly information for this product has been prepared for use by a recognized treatment or recycling facility and is not intended to be used by others.

1. Product information
2. Materials and components list for selective treatment
3. Disassembly tools
4. Disassembly references

The following information is intended only for the use of treatment and recycling facilities.

All disassembly instructions should be performed with the power switch in the OFF position. Disconnect the power cord from the wall outlet and from the printer before continuing. If there are any other devices attached to the printer, then turn them off as well, and unplug any cables going into the printer.

1. Product information

Model name(s)—Indicate all model name(s) within the product family

Model name
Lexmark CX42x Series – Lexmark MC2325adw, Lexmark CX421adn, Lexmark MC2425adw
Lexmark CX52x Series – Lexmark CX522ade, Lexmark MC2535adwe
Lexmark CX62x Series – Lexmark CX622ade, Lexmark MC2640adwe, Lexmark XC2235, Lexmark CX625ade Lexmark CX625adhe, Lexmark XC4240

* Add rows as needed

2. Materials and components list for selective treatment

Items	Quantity	Notes
Polychlorinated biphenyls (PCB) containing capacitors	0	N/A
Mercury containing components, such as switches or backlighting lamps	0	N/A
Batteries	1	Lithium Manganese Dioxide coin cell located on the Controller card
Printed circuit boards greater than 10 cm ²	multiple	9 – CX42x, CX52x 10 – CX62x Series For details, see Annex B, Page 16 Options: 1 – Hard disk drive 1 – 550 Sheet Tray 1 – 650 Sheet Tray
Toner cartridges, liquid and pasty, as well as colour toner	9	4 – Toner cartridge 4 – Imaging unit 1 – Waste toner bottle
Plastic containing brominated flame retardants	multiple	13 – CX42x, CX52x, CX62x Options: +2 for each 550/ 560 Paper handling option / Sheet tray For details, See Annex A, Pages 15
Asbestos waste and components which contain asbestos	0	N/A
Cathode ray tubes	0	N/A
Chlorofluorocarbons (CFC), Hydrochlorofluorocarbons (HCFC) or Hydrofluorocarbons (HFC), Hydrocarbons (HC)	0	N/A
Gas discharge lamps	0	N/A
Liquid Crystal Display (LCD) greater than 100 cm ² and those back-lighted with Gas discharge lamps	1	CX62x series only
External electrical cables	1	Power cord located on the back lower right quadrant
Components containing refractory fibres	0	N/A
Components containing radioactive substances	0	N/A
Electrolyte capacitors containing substances of concern ¹	2	Capacitor located on Power Supply, See Page 9

¹ With (height > 25 mm, diameter > 25 mm or proportionately similar volume)

3. Disassembly tools

Item
#2 Phillips screwdriver, magnetic
Wire cutter
E-clip puller or small flat-head screwdriver
Standard slotted head screwdriver

4. Disassembly references

4.1. Removal procedure(s)



CX42x removal



CX52x WEEE removal



CX62x WEEE

WEEE materials and components removal procedures are available upon request.

Contact: recycling@lexmark.com

4.2. Graphical illustration of material's and component's location

1

LCD >100 cm² are identified with cyan-filled boxes

2

PCBs >10 cm² are identified with green-filled boxes

3

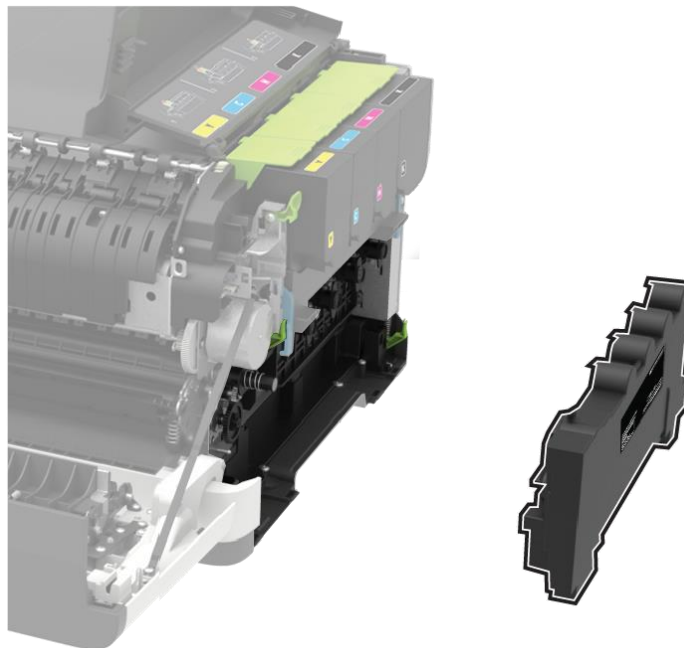
Printer components containing Brominated flame retardants are identified with orange-filled boxes

**CX42x, CX52x, CX62x Series
Location**

Toner Cartridge

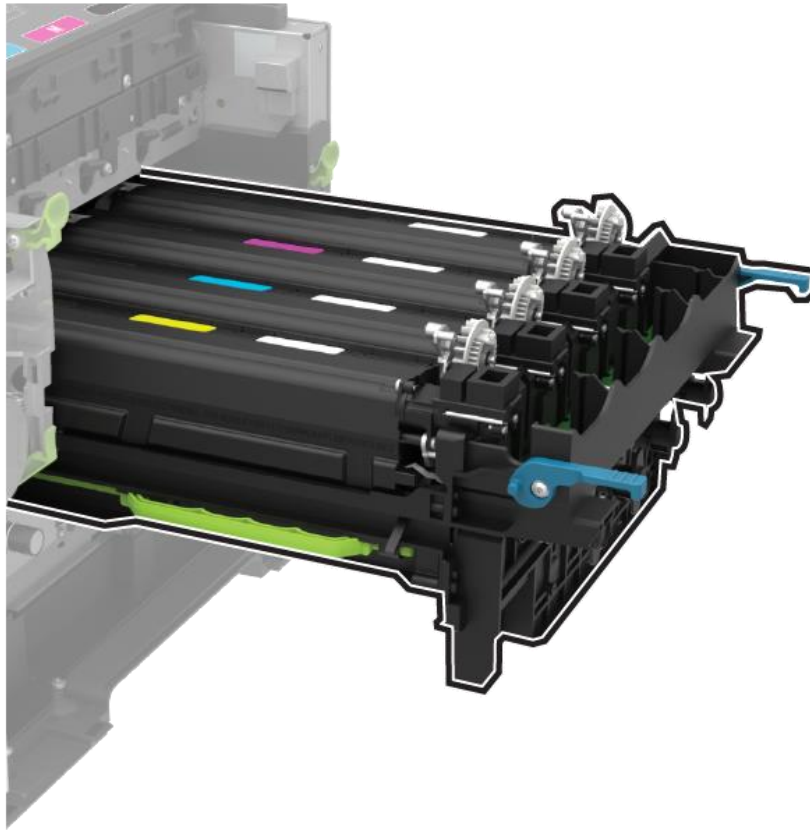


Waste Toner Bottle



**CX42x, CX52x, CX62x Series
Location**

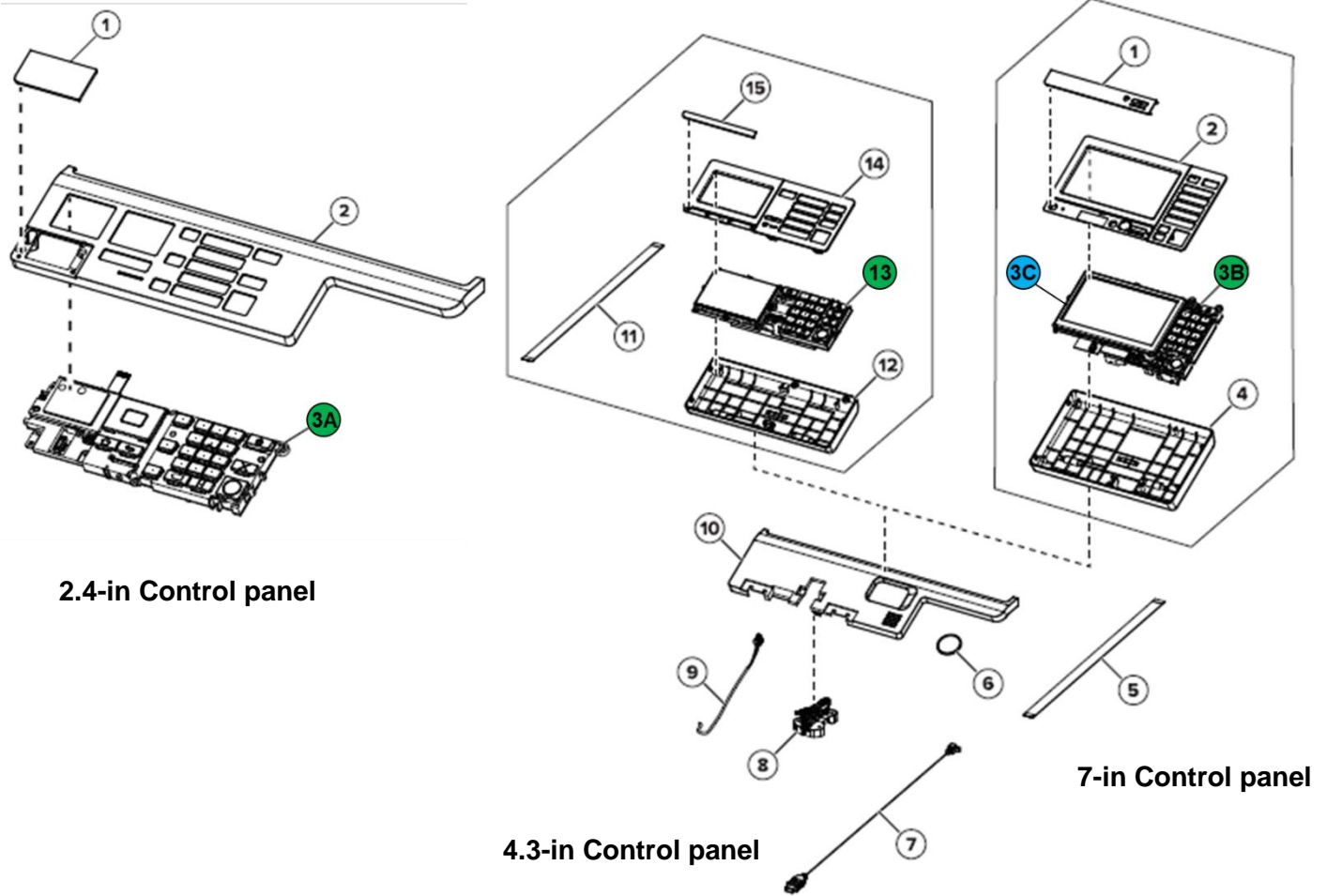
Imaging Unit



CX42x, CX52x, CX62x Series
Location

Printed Circuit Boards >10cm² and Brominated Plastic Components

Control Panel

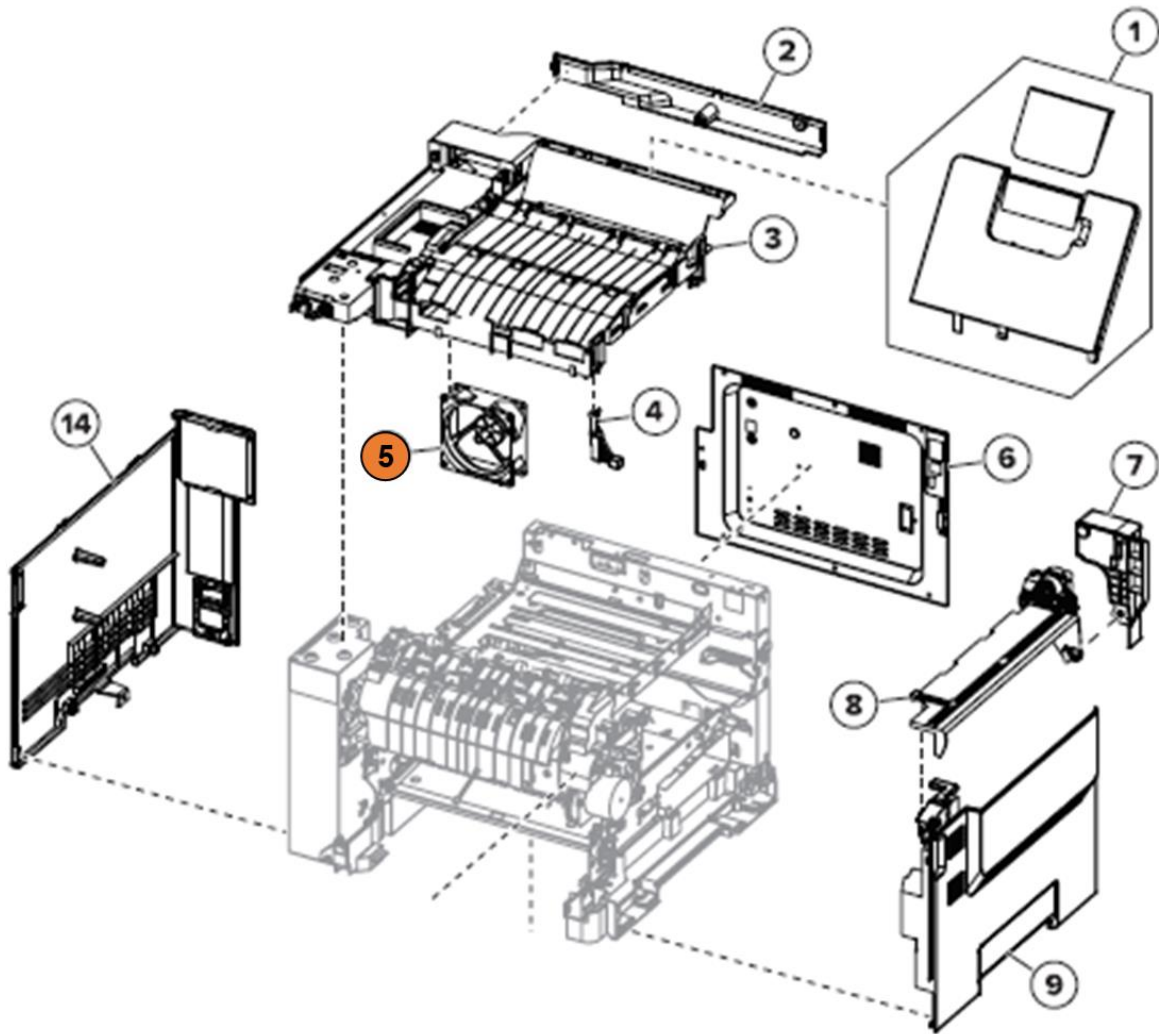


Index	Description
3A	2.4-in Control panel display assembly UICC board
13	4.3 in Control panel display assembly UICC board
3B	7-in Control panel display assembly UICC board
3C	7-in Control panel display

CX42x, CX52x, CX62x Series
Location

Printed Circuit Boards >10cm² and Brominated Plastic Components

Covers

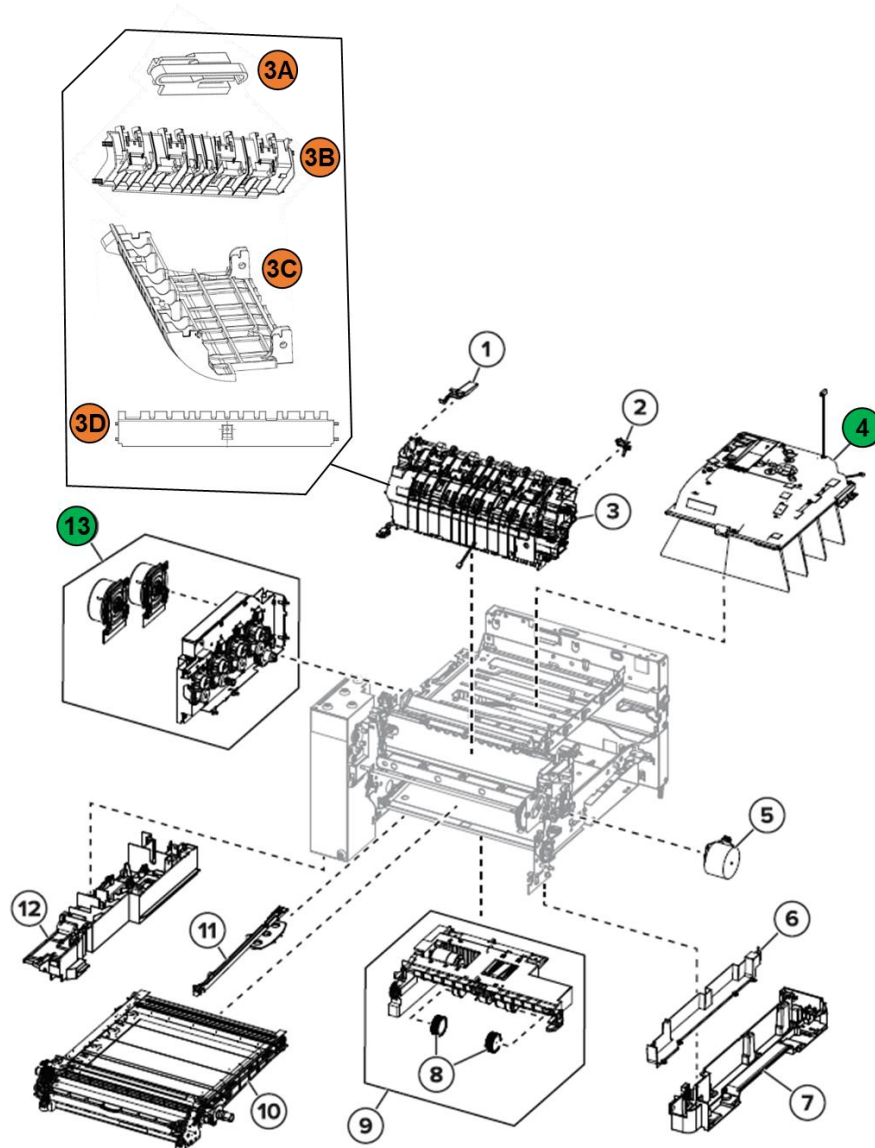


Index	Description
5	System fan

CX42x, CX52x, CX62x Series
Location

Printed Circuit Boards >10cm² and Brominated Plastic Components

Paper path and frame

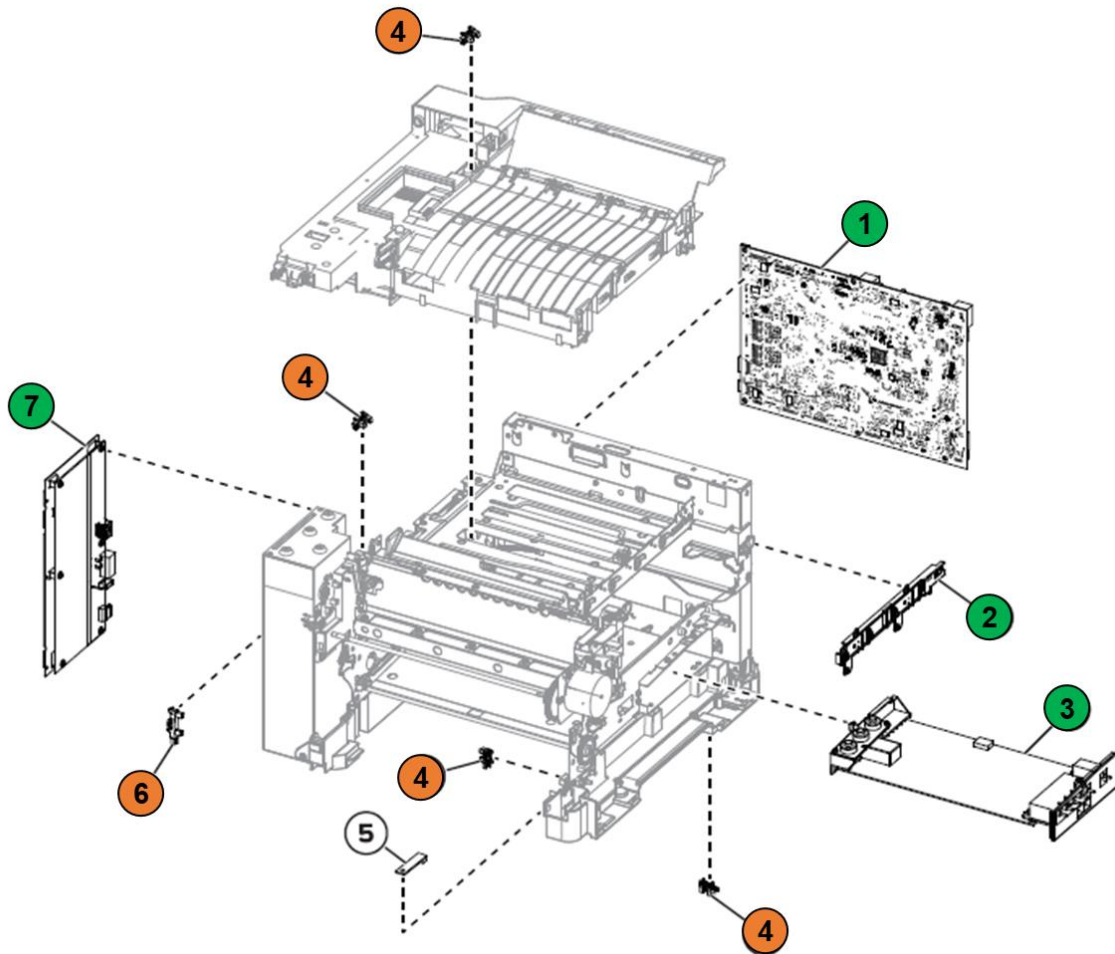


Index	Description
3A	HOUSING-HEATER AC CONNECTOR
3B	GUIDE - INNER EXIT
3C	GUIDE - DUPLEX
3D	GUIDE - ENTRY
4	Printhead card within the assembly
13	EP drive assembly with motor PCB within the assembly

CX42x, CX52x, CX62x Series
Location

Printed Circuit Boards >10cm² and Brominated Plastic Components

Electronics

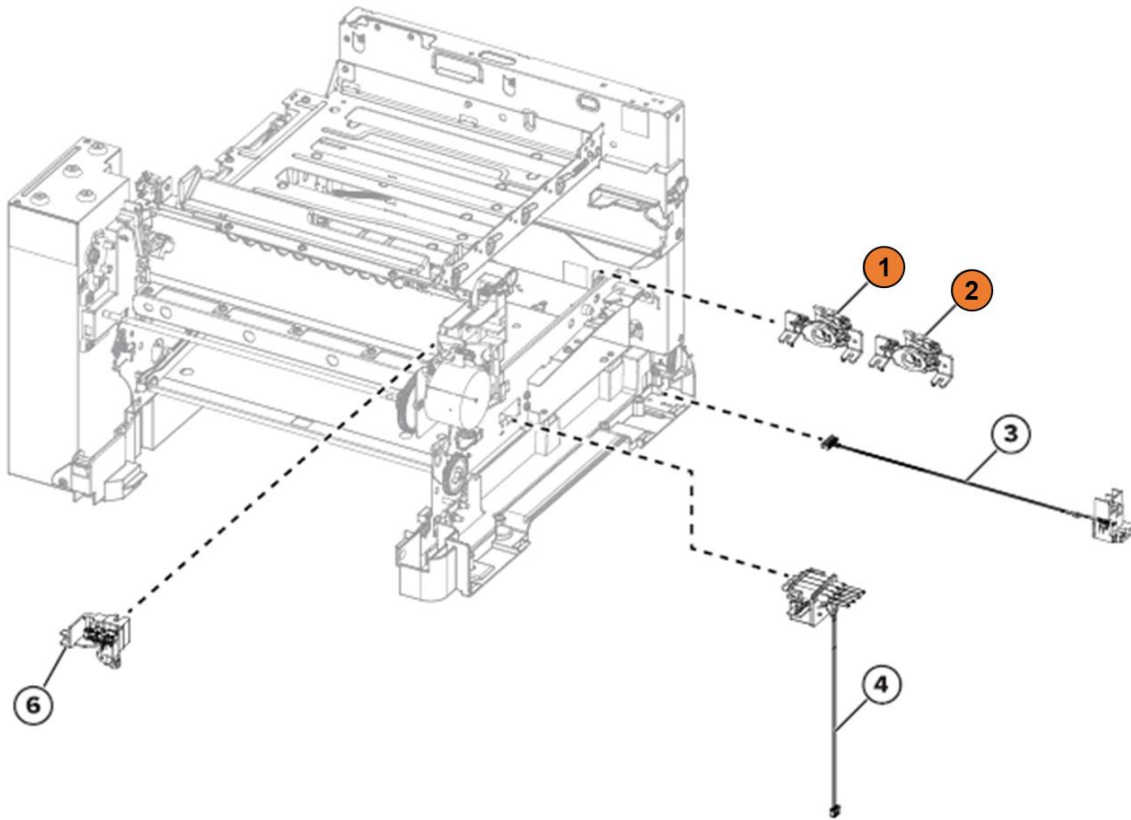


Index	Description
1	Controller board
2	Toner meter card
3	High voltage power supply
4	Sensor (tray present) Sensor (duplex) Sensor (narrow media/bin full)
6	Sensor (fuser exit)
7	110 W low-voltage power supply

CX42x, CX52x, CX62x Series
Location

Printed Circuit Boards >10cm² and Brominated Plastic Components

Cables and sensors

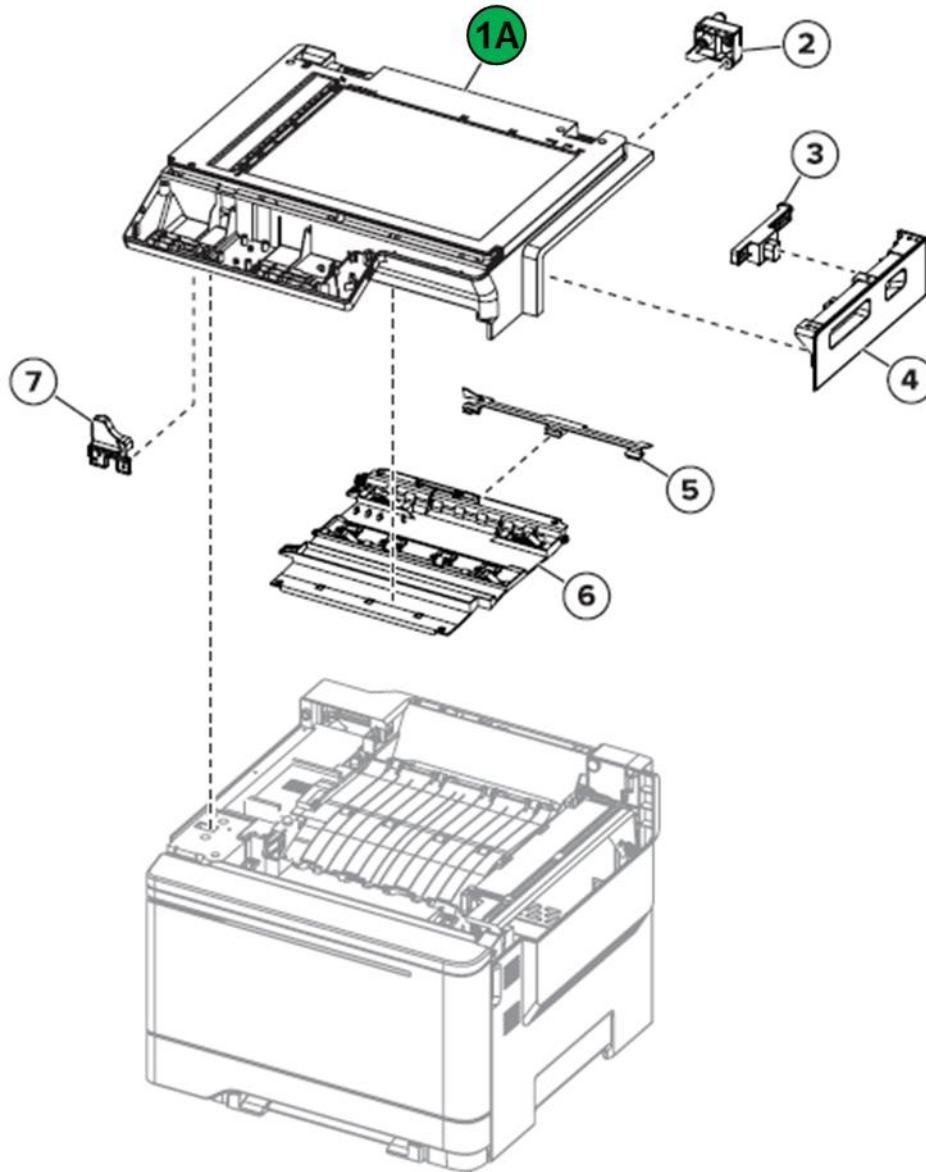


Index	Description
1	Sensor (left toner patch with thermistor)
2	Sensor (right toner patch with thermistor)

CX42x, CX52x, CX62x Series
Location

Printed Circuit Boards >10cm² and Brominated Plastic Components

Flatbed Scanner

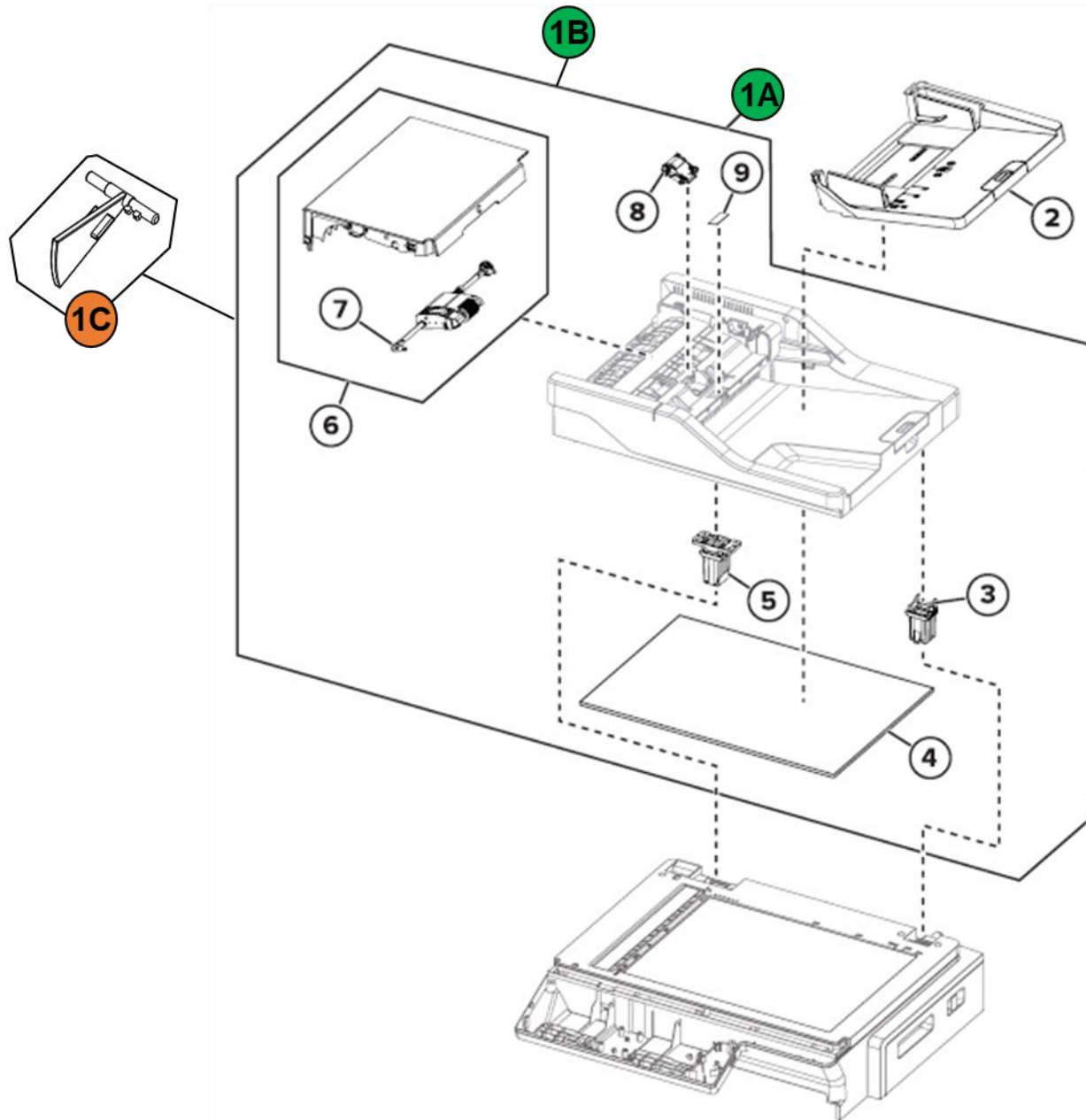


Index	Description
1A	Image sensor board within Flatbed scanner assembly

CX42x, CX52x, CX62x Series
Location

Printed Circuit Boards >10cm² and Brominated Plastic Components

ADF

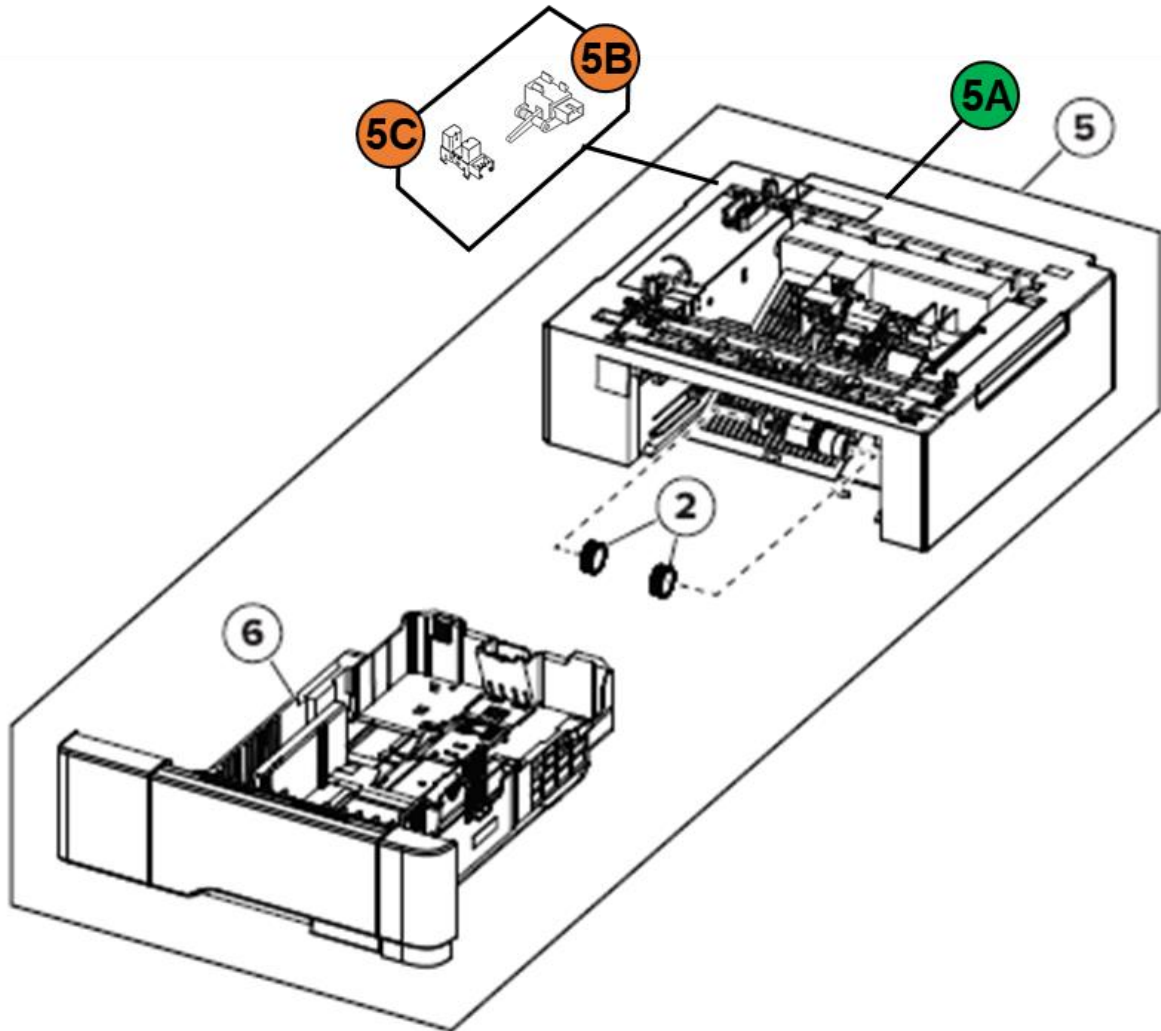


Index	Description
1A	ADF PCB within ADF scanner assembly
1B	CX62x Image sensor board within ADF scanner assembly
1C	Paper present sensor flag within the ADF assembly

CX42x, CX52x, CX62x Series
Location

Printed Circuit Boards >10cm² and Brominated Plastic Components

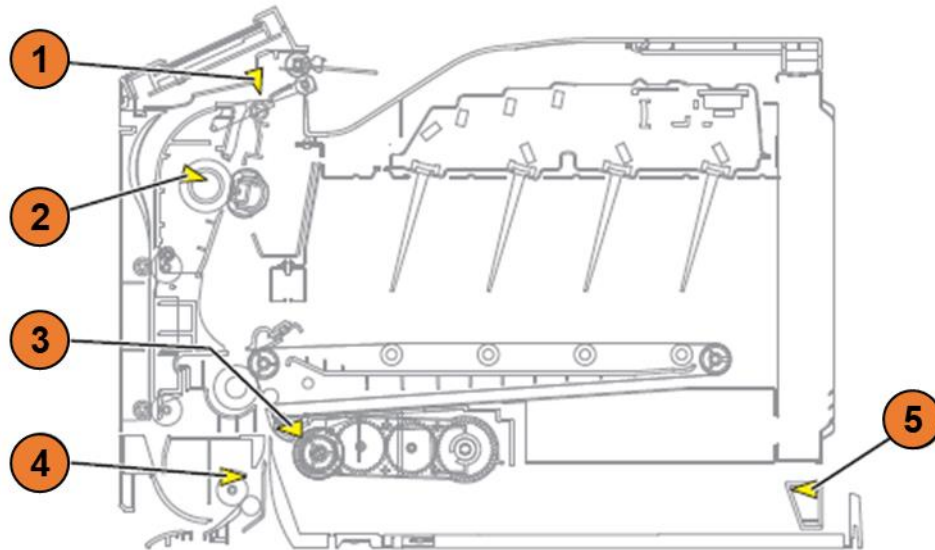
550 / 650 Option tray



Index	Description
5A	PHO card within the assembly
5B	Sensor – Staging within the assembly
5C	Sensor – PHOTOINTERRUPTER within the assembly

CX42x, CX52x, CX62x Series
Location

Sensors



Index	Description
1	Sensor (narrow media/bin full)
2	Sensor (fuser exit)
3	Sensor (input)
4	Sensor (redrive/duplex path 1)
5	Sensor (tray present)

**CX42x, CX52x, CX62x Series
Location**

Annex A – Printer components with Brominated Flame Retardants

Index	Description	Parts Marking	Qty	Location
1	System fan	N/A	1	Covers, See page 8
2	HOUSING-HEATER AC CONNECTOR	PBT-GF15 FR(17)	1	Paper path and frame (Fuser), See page 8
3	GUIDE - INNER EXIT	PET-(GF+MD)40 FR(17)	1	Paper path and frame (Fuser), See page 8
4	GUIDE - DUPLEX	PET-(GF+MD)40 FR(17)	1	Paper path and frame (Fuser), See page 8
5	GUIDE - ENTRY	PET-(GF+MD)40 FR(17)	1	Paper path and frame (Fuser), See page 8
6	Sensor (tray present)	N/A	1	Electronics, See page 9
7	Sensor (duplex)	N/A	1	Electronics, See page 9
8	Sensor (narrow media/bin full)	N/A	2	Electronics, See page 9
9	Sensor (fuser exit)	N/A	1	Electronics, See page 9
10	Sensor (input)	N/A	1	Sensors, See page 13
11	Sensor (left toner patch with thermistor)	N/A	1	Cables and Sensors, See page 10
12	Sensor (right toner patch with thermistor)	N/A	1	Cables and Sensors, See page 10
13	Sensor – Staging	N/A	1	550 / 650 Option tray, See page 13
14	Sensor – PHOTOINTERRUPTER	N/A	1	550 / 650 Option tray, See page 13
15	Paper present sensor flag	N/A	1	ADF, See page 12

**CX42x, CX52x, CX62x Series
Location**

Annex B – Printed Circuit Boards >10cm²

Index	Description	Quantity	Location	CX42x CX52x	CX62x
1	2.4-in Control panel display assembly UICC board	1	Control panel, See page 6	X	
	4.3-in Control panel display assembly UICC board	1	Control panel, See page 6	X	
	7-in Control panel display UICC card	1	Control panel, See page 7		X
2	Printhead card	1	Paper path and frame, See page 8	X	X
3	EP drive assembly with motor PCB	2	Paper path and frame, See page 8	X	X
4	Controller board	1	Electronics, See page 9	X	X
5	Toner meter card	1	Electronics, See page 9	X	X
6	High voltage power supply	1	Electronics, See page 9	X	X
7	110 W low-voltage power supply	1	Electronics, See page 9	X	X
8	Image sensor board	1	Flatbed Scanner, See page 11	X	X
9	CX62x Image sensor board	1	ADF, See page 12		X
10	ADF PCB	1	ADF, See page 12	X	X
11	550 or 650 PHO card	1	550 / 650 Option tray, See page 13	X	X
12	Hard disk drive	1	Controller board, See page 9	X	X