

## Disassembly of Waste Electrical and Electronic Equipment (WEEE) Manual

EU Waste Electronic and Electrical Equipment Directive require producers to provide information of the different electronic and electrical materials and components found in their products at its end-of-life, and disassembly references to treatment and recycling facilities.

The disassembly information for this product has been prepared for use by a recognized treatment or recycling facility and is not intended to be used by others.

1. Product information
2. Materials and components list for selective treatment
3. Disassembly tools
4. Disassembly references

The following information is intended only for the use of treatment and recycling facilities.

### 1. Product information

**Model name(s)**—Indicate all model name(s) within the product family

Model name
<b>Lexmark C3224 series –</b> Lexmark C3224dw
<b>Lexmark C3326 series –</b> Lexmark C3326dw, Lexmark CS331dw
<b>Lexmark MC3224 series –</b> Lexmark MC3224dwe, Lexmark MC3224adwe
<b>Lexmark MC3326 series –</b> Lexmark MC3326adwe, Lexmark CX331adwe

\* Add rows as needed

## 2. Materials and components list for selective treatment

Items	Quantity	Notes
Polychlorinated biphenyls (PCB) containing capacitors	0	N/A
Mercury containing components, such as switches or backlighting lamps	0	N/A
Batteries	1	Attached in <a href="#">Controller cards</a> in MC3224adwe, MC3326adwe and CX331adwe
Printed circuit boards greater than 10 cm <sup>2</sup>	multiple	8 – C3224dw, C3326dw, CS331dw 9 – MC3224dwe (no Fax card) 10 – MC3224adwe, MC3326adwe, CX331adwe  For details, see <a href="#">Annex B</a>
Toner cartridges, liquid and pasty, as well as colour toner	5	4 – Imaging unit 1 – Waste toner bottle
Plastic containing brominated flame retardants	multiple	16 – C3224dw, C3326dw, CS331dw 17 – MC3224dwe (no Fax card) 17 – MC3224adwe, MC3326adwe, CX331adwe  For details, See <a href="#">Annex A</a>
Asbestos waste and components which contain asbestos	0	N/A
Cathode ray tubes	0	N/A
Chlorofluorocarbons (CFC), Hydrochlorofluorocarbons (HCFC) or Hydrofluorocarbons (HFC), Hydrocarbons (HC)	0	N/A
Gas discharge lamps	0	N/A
Liquid Crystal Display (LCD) greater than 100 cm <sup>2</sup> and those back-lighted with Gas discharge lamps	0	N/A
External electrical cables	1	Power cable located on the back lower left quadrant
Components containing refractory fibres	0	N/A
Components containing radioactive substances	0	N/A
Electrolyte capacitors containing substances of concern ( <i>capacitors with height &gt; 25 mm, diameter &gt; 25 mm or proportionately similar volume</i> )	0	Capacitor located on <a href="#">Power Supply</a>

## 3. Disassembly tools

Item
#2 Phillips screwdriver, magnetic
Wire cutter
E-clip puller or small flat-head screwdriver
Standard slotted head screwdriver

## 4. Disassembly references

### 4.1. Removal procedure(s)

WEEE materials and components removal procedures are available upon request.

Contact: [recycling@lexmark.com](mailto:recycling@lexmark.com)

### 4.2. Graphical illustration of material's and component's location

1

*LCD >100 cm<sup>2</sup> are identified with cyan-filled boxes*

2

*PCBs >10 cm<sup>2</sup> are identified with green-filled boxes*

3

*Printer components containing Brominated flame retardants are identified with orange-filled boxes*

**C3224, C3326, CS331, MC3224, MC3326, CX331 Series  
Location**

**Supplies**

**C3224, C3326, CS331 Toner Cartridge**



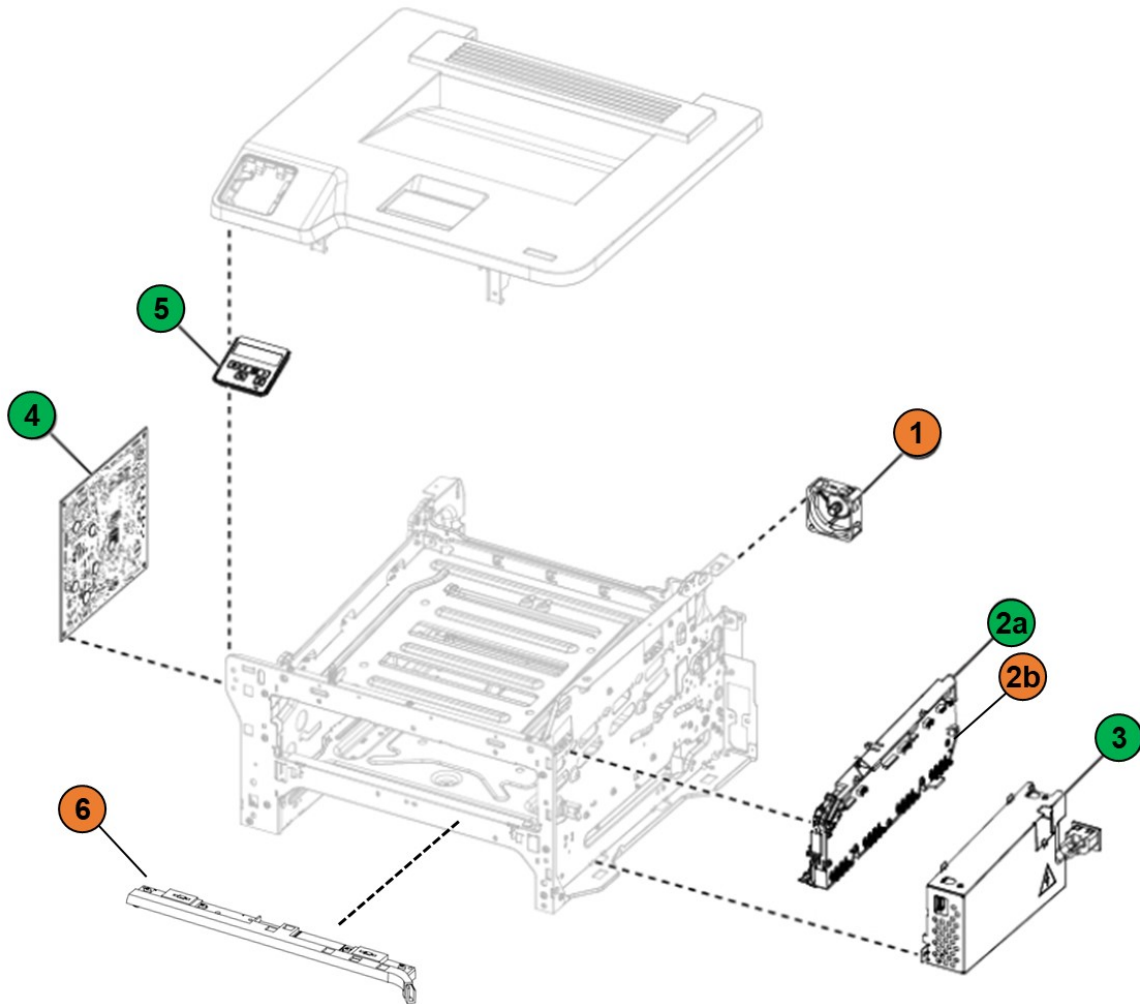
**MC3224, MC3326, CX331 Toner Cartridge**



**C3224, C3326, CS331, MC3224, MC3326, CX331 Series**  
**Location**

**Printed Circuit Boards >10cm<sup>2</sup> and Brominated Plastic Components**

**C3224, C3326 Electronics**

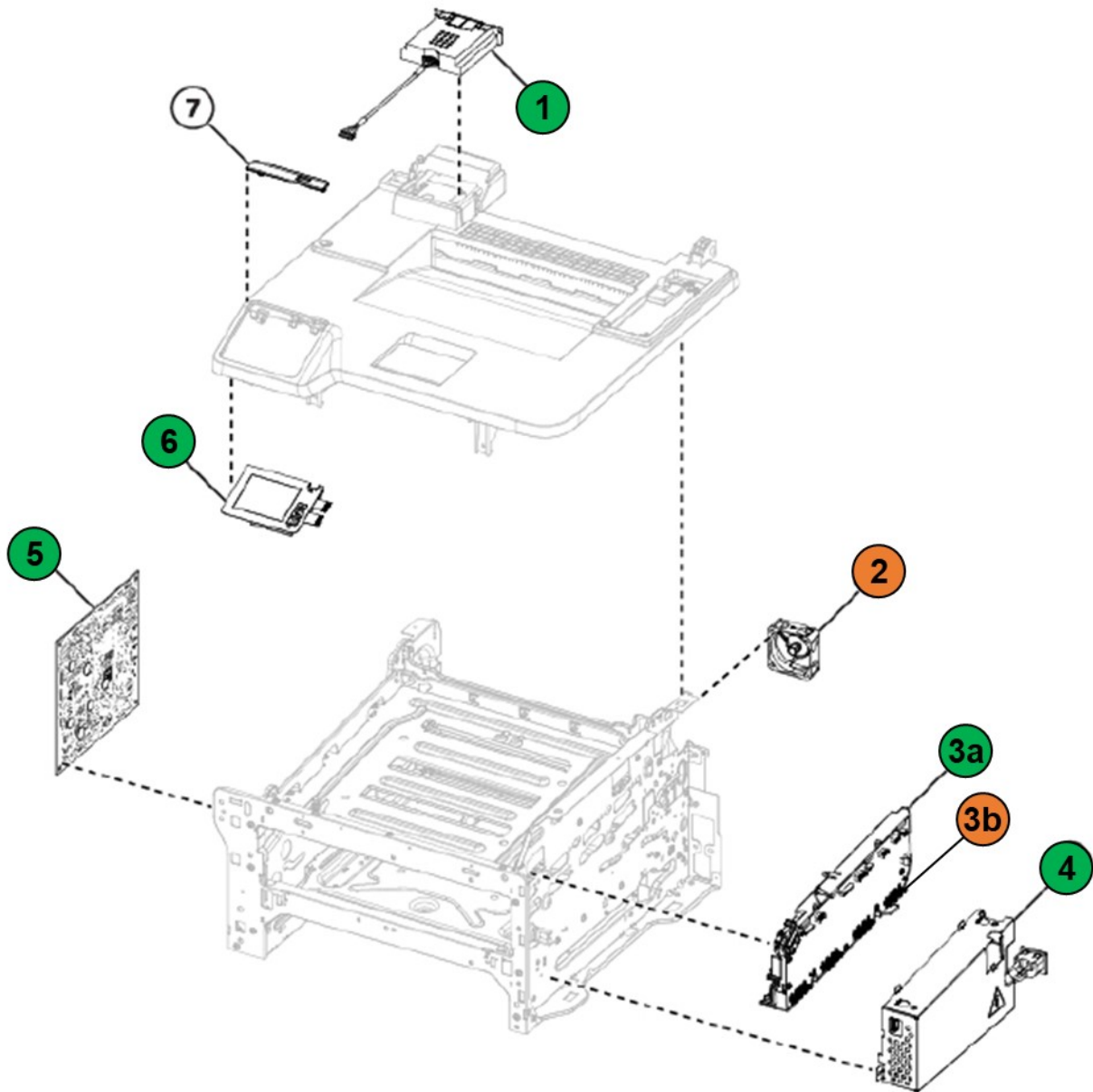


Index	Description
1	Exhaust fan
2a	High voltage power supply
2b	Front cover interlock switch within HVPS assembly
3	Low voltage power supply
4	Controller board
5	Control panel board
6	TPS sensor asm

**C3224, C3326, CS331, MC3224, MC3326, CX331 Series**  
**Location**

**Printed Circuit Boards >10cm<sup>2</sup> and Brominated Plastic Components**

**MC3224, MC3326, CX331 Electronics**

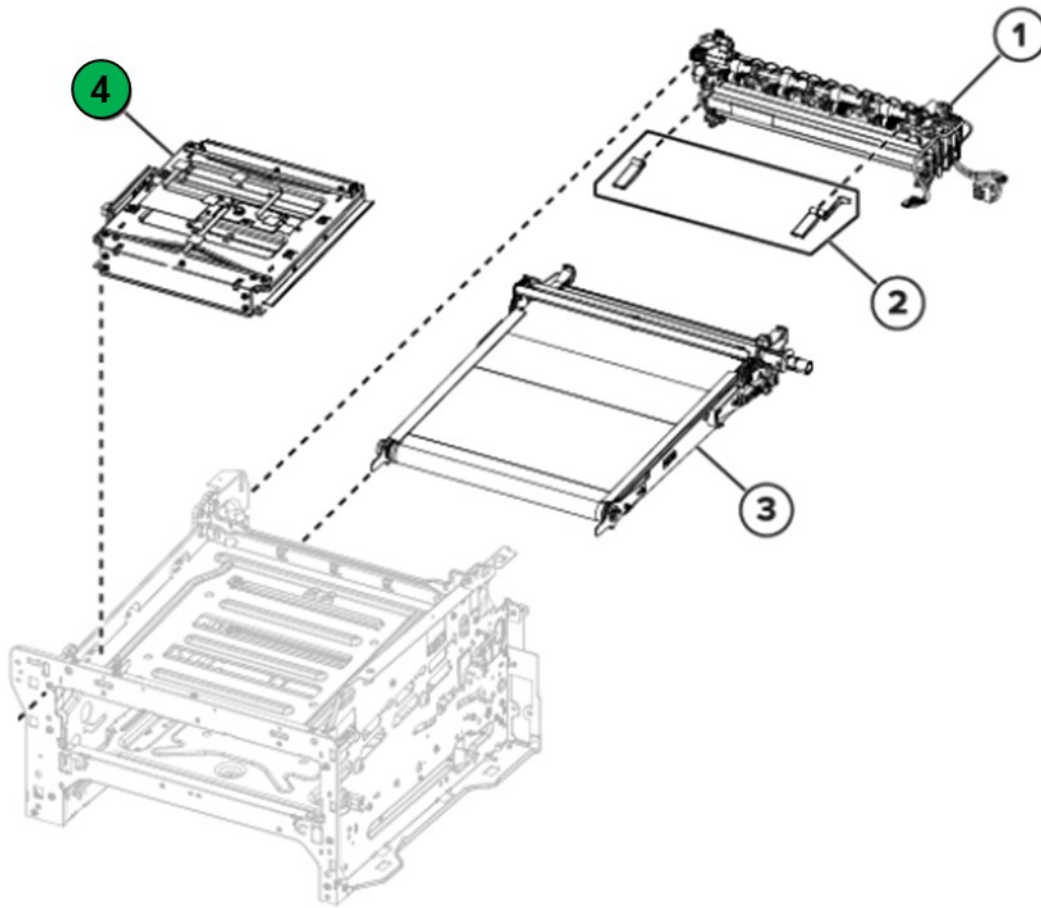


Index	Description
1	Fax card
2	Exhaust fan
3a	High voltage power supply
3b	Front cover interlock switch within HVPS assembly
4	Low voltage power supply
5	Controller board
6	Control panel board

**C3224, C3326, CS331, MC3224, MC3326, CX331 Series**  
**Location**

**Printed Circuit Boards >10cm<sup>2</sup> and Brominated Plastic Components**

**EP Components**

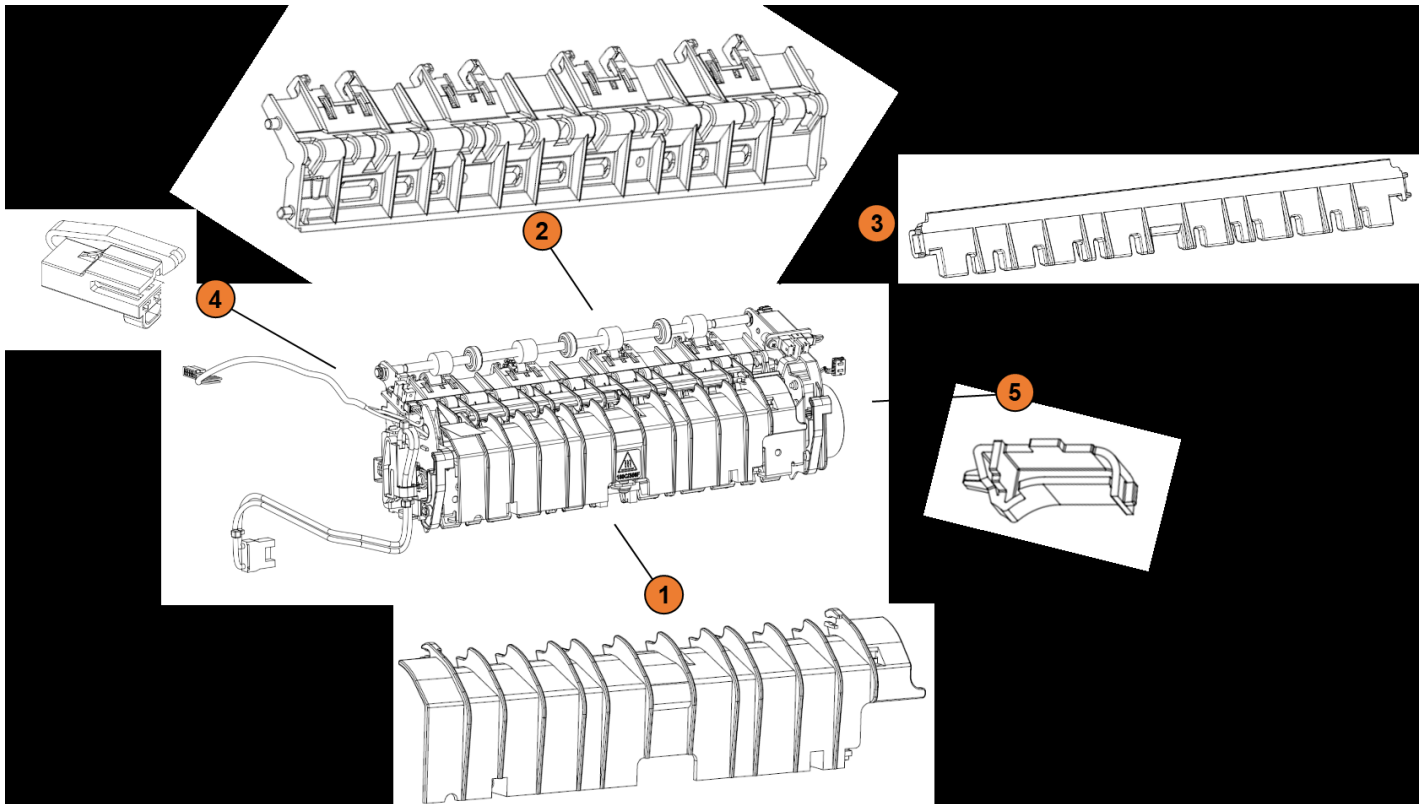


Index	Description
1	Fuser assembly with brominated parts (see next page)
4	Printhead card within Printhead assembly

**C3224, C3326, CS331, MC3224, MC3326, CX331 Series**  
**Location**

**Printed Circuit Boards >10cm2 and Brominated Plastic Components**

**Fuser components**



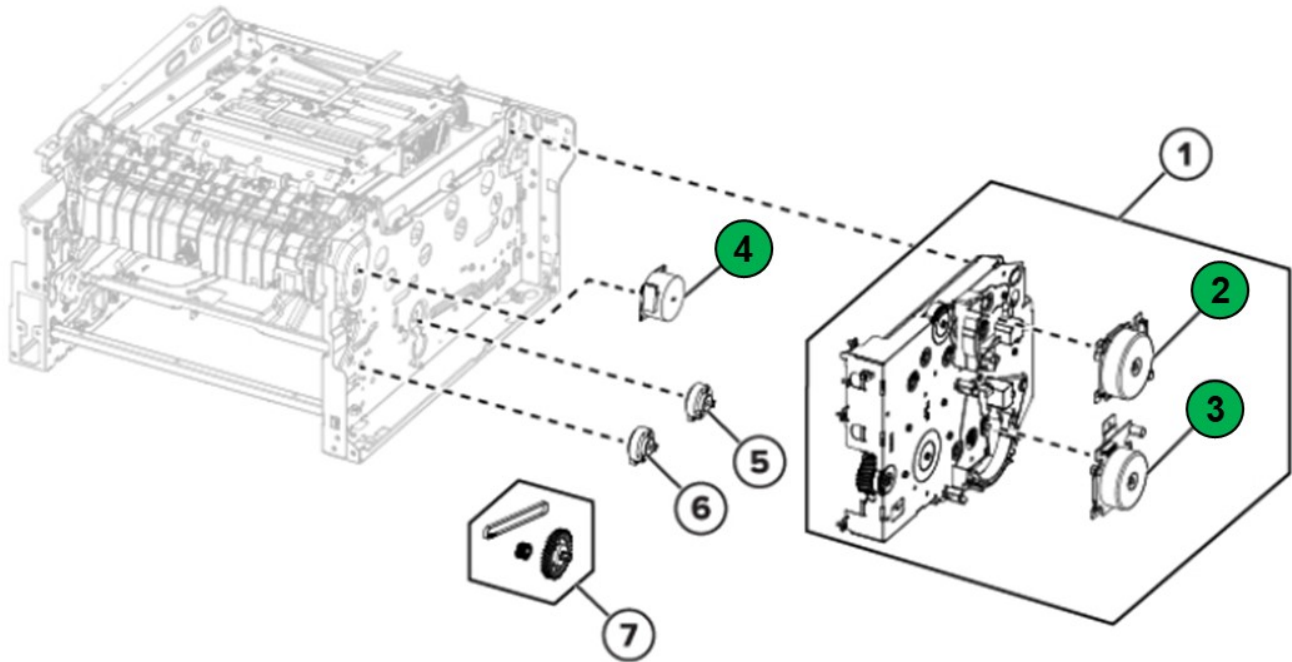
Index	Description
1	Guide-Exit BUR Side
2	Guide-Exit Belt Side
3	Guide-Entry
4	Housing-AC Connector
5	Shield Heater AC



**C3224, C3326, CS331, MC3224, MC3326, CX331 Series**  
**Location**

**Printed Circuit Boards >10cm<sup>2</sup> and Brominated Plastic Components**

**Main drive**

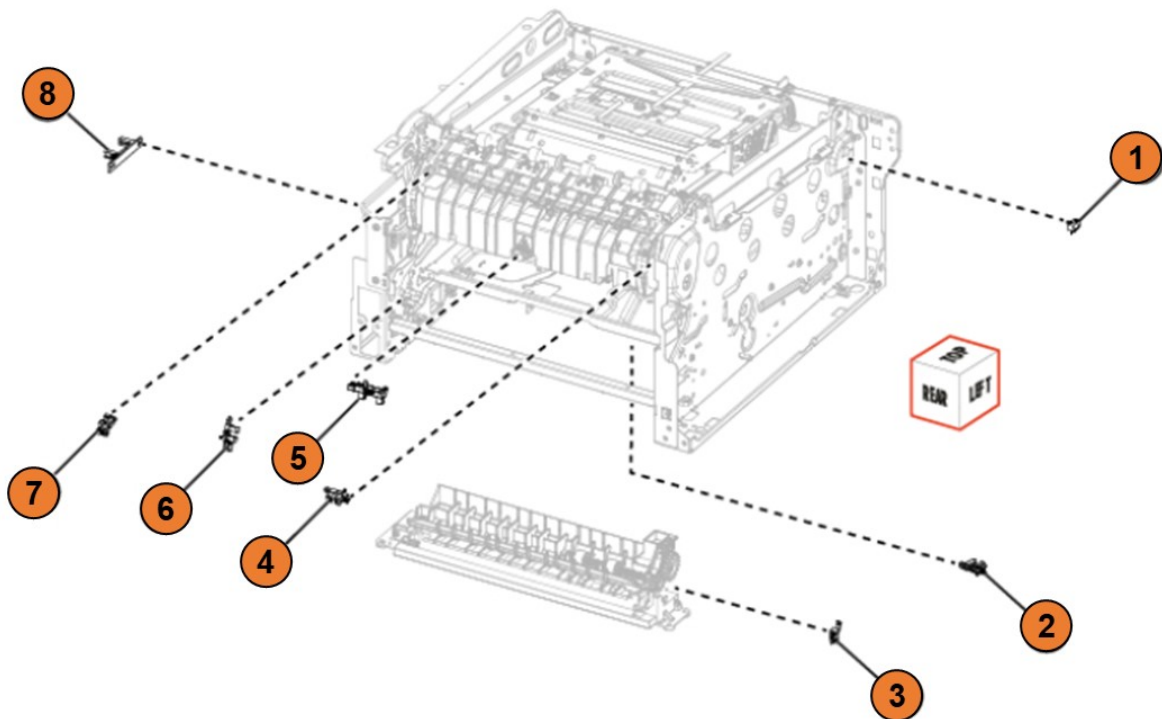


Index	Description
2,3	Motor board within the Main drive assembly
4	Fuser motor board within the assembly

**C3224, C3326, CS331, MC3224, MC3326, CX331 Series**  
**Location**

**Brominated Plastic Components**

**Sensors**

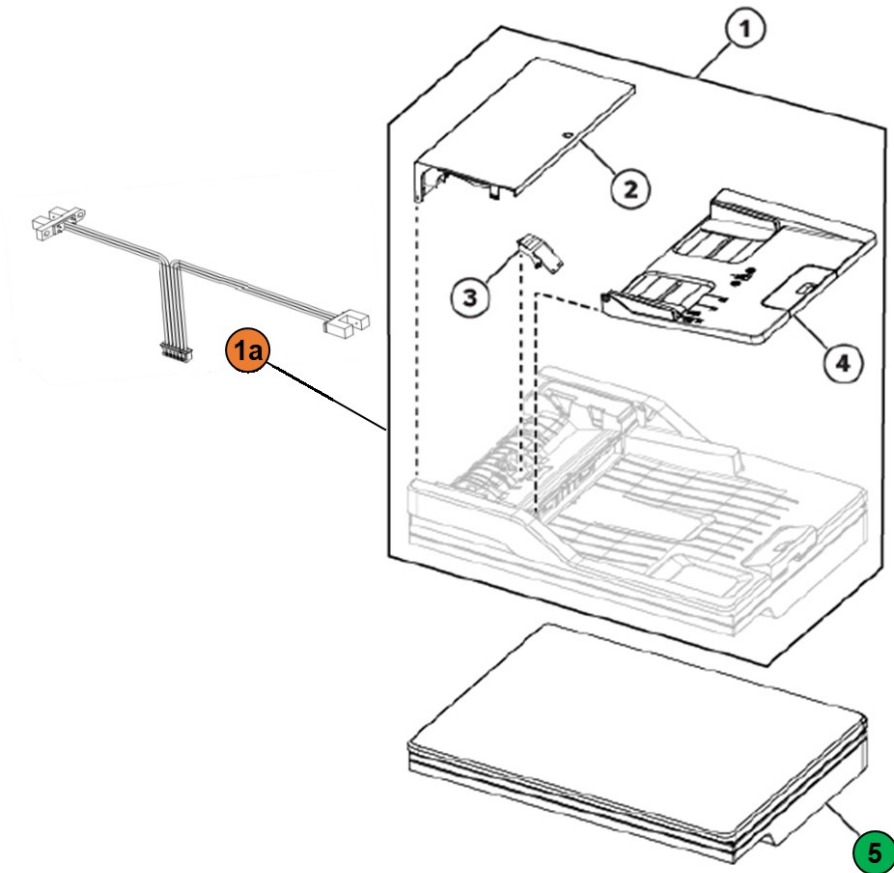


Index	Description
1	Printhead interlock switch
2	Sensor (manual feeder)
3	Tray interlock switch
4	Sensor (fuser exit)
5	Sensor (fuser buckle)
6	Sensor (input)
7	Sensor (bin/narrow media)
8	Sensor (waste toner bottle)

**C3224, C3326, CS331, MC3224, MC3326, CX331 Series  
Location**

**Printed Circuit Boards >10cm<sup>2</sup> and Brominated Plastic Components**

**MC3224, MC3326, CX331 Scanner**



Index	Description
1a	Scanner Photo Interrupt Sensor
5	CIS bar board within Flatbed scanner assembly

## Annex A – Printer components with Brominated Flame Retardants

Index	Description	Parts Marking	C3224, C3326, CS331 Qty	MC3224, MC3326, CX331 Qty	Location
1	Guide-Exit BUR Side	PET-(GF+MD)45 FR(17)	1	1	<a href="#">Fuser</a>
2	Guide-Exit Belt Side	PET-(GF+MD)45 FR(17)	1	1	<a href="#">Fuser</a>
3	Guide-Entry	PET-(GF+MD)45 FR(17)	1	1	<a href="#">Fuser</a>
4	Housing-AC Connector	PET-(GF+MD)45 FR(17)	1	1	<a href="#">Fuser</a>
5	Shield Heater AC	PET-(GF+MD)45 FR(17)	1	1	<a href="#">Fuser</a>
6	Staging	N/A	1	1	<a href="#">Sensors</a>
7	Fuser Bubble	N/A	1	1	<a href="#">Sensors</a>
8	Fuser Exit	N/A	1	1	<a href="#">Sensors</a>
9	Bin Full	N/A	1	1	<a href="#">Sensors</a>
10	Single sheet feeder	N/A	1	1	<a href="#">Sensors</a>
11	TPS Sensor Asm	N/A	2	2	<a href="#">Electronics</a>
12	WTB Sensor	N/A	1	1	<a href="#">Sensors</a>
13	Tray present switch	N/A	1	1	<a href="#">Sensors</a>
14	LSU safety interlock switch	N/A	1	1	<a href="#">Sensors</a>
15	Cooling Fan	N/A	1	1	<a href="#">Electronics</a>
16	Scanner Photo Interrupt Sensor	N/A	0	1	<a href="#">Scanner</a>

**C3224, C3326, CS331, MC3224, MC3326, CX331 Series  
Location**

**Annex B – Printed Circuit Boards >10cm<sup>2</sup>**

Index	Description	Quantity	Location	C3224, C3326, CS331	MC3224, MC3326, CX331
1	Op Panel-2-Line	1	<a href="#">Electronics</a>	X	
	Op Panel-E-Task	1	<a href="#">Electronics</a>		X
2	Scanner CIS Bar	1	Flatbed of <a href="#">Scanner</a>		X
3	Printhead card	1	<a href="#">EP Components</a>	X	X
4	Controller board	1	<a href="#">Electronics</a>	X	X
5	LVPS	1	<a href="#">Electronics</a>	X	X
6	HVPS	1	<a href="#">Electronics</a>	X	X
7	BLDC Drive Motors	2	<a href="#">Main Drive</a>	X	X
8	Fuser Motor	1	<a href="#">EP Components</a>	X	X
9	Fax card	1	<a href="#">Electronics</a>		X