

Disassembly of Waste Electrical and Electronic Equipment (WEEE) Manual

EU Waste Electronic and Electrical Equipment Directive require producers to provide information of the different electronic and electrical materials and components found in their products at its end-of-life, and disassembly references to treatment and recycling facilities.

The disassembly information for this product has been prepared for use by a recognized treatment or recycling facility and is not intended to be used by others.

1. Product information
2. Materials and components list for selective treatment
3. Disassembly tools
4. Disassembly references

The following information is intended only for the use of treatment and recycling facilities.

1. Product information

Model name(s)—Indicate all model name(s) within the product family

Model name

Lexmark CS72x series –

Lexmark CS720de, Lexmark CS720dte, Lexmark CS725de, Lexmark CS725dte, Lexmark C4150, Lexmark CS727de, Lexmark CS728de

Lexmark CX72x series –

Lexmark CX725de, Lexmark CX725dhe, Lexmark CX725dthe, Lexmark CX727de, Lexmark XC4140, Lexmark XC4143, Lexmark XC4150, Lexmark XC4153

* Add rows as needed

2. Materials and components list for selective treatment

Items	Quantity	Notes
Polychlorinated biphenyls (PCB) containing capacitors	0	N/A
Mercury containing components, such as switches or backlighting lamps	0	N/A
Batteries	1	Lithium Manganese Dioxide coin cell located on the system controller card
Printed circuit boards greater than 10 cm ²	multiple	8 – Lexmark CS72x series 10 – Lexmark CX72x series 1 – 550 Tray Option For details, see Annex B
Toner cartridges, liquid and pasty, as well as colour toner	9	4 Toner cartridges, 4 Developer units and 1 Waste toner bottle

Items	Quantity	Notes
Plastic containing brominated flame retardants	multiple	24 – Lexmark CS72x and CX72x series 3 – 550 Tray Option For details, see Annex A
Asbestos waste and components which contain asbestos	0	N/A
Cathode ray tubes	0	N/A
Chlorofluorocarbons (CFC), Hydrochlorofluorocarbons (HCFC) or Hydrofluorocarbons (HFC), Hydrocarbons (HC)	0	N/A
Gas discharge lamps	0	N/A
Liquid Crystal Display (LCD) greater than 100 cm ² and those back-lighted with Gas discharge lamps	0	N/A
External electrical cables	1	Power cord located on the rear of the printer
Components containing refractory fibres	0	N/A
Components containing radioactive substances	0	N/A
Electrolyte capacitors containing substances of concern (<i>capacitors with height > 25 mm, diameter > 25 mm or proportionately similar volume</i>)	multiple	Capacitor(s) located on Power Supply
Electrical and Electronic (EE) Customer Replaceable Paper handling devices	1	550 Tray Option
Electrical and Electronic (EE) Customer Replaceable Internal/External Card options	multiple	For details, See Annex D

3. Disassembly tools

Item
#2 Phillips screwdriver, magnetic
Wire cutter
E-clip puller or small flat-head screwdriver
T8 screwdriver
T10 screwdriver

4. Disassembly references

4.1.1. Removal procedure(s)

WEEE materials and components removal procedures are available upon request.
Contact: recycling@lexmark.com

4.1.2. Graphical illustration of material's and component's location



LCD >100 cm² are identified with cyan-filled boxes



PCBs >10 cm² are identified with green-filled boxes



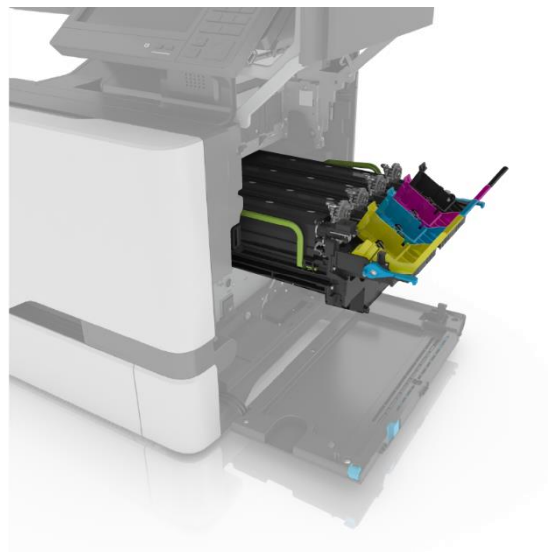
Printer components containing Brominated flame retardants are identified with orange-filled boxes

CS72x and CX72x Series Location

Toner cartridge



Imaging Unit



CS72x and CX72x Series Location

Waste Toner Bottle

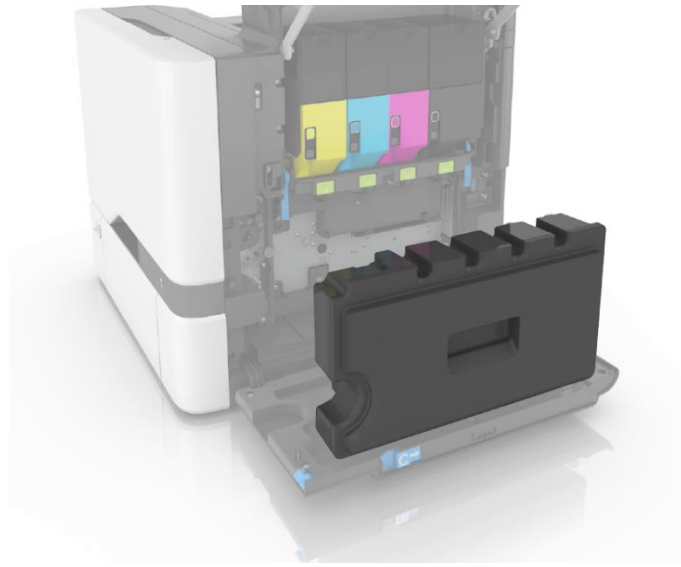
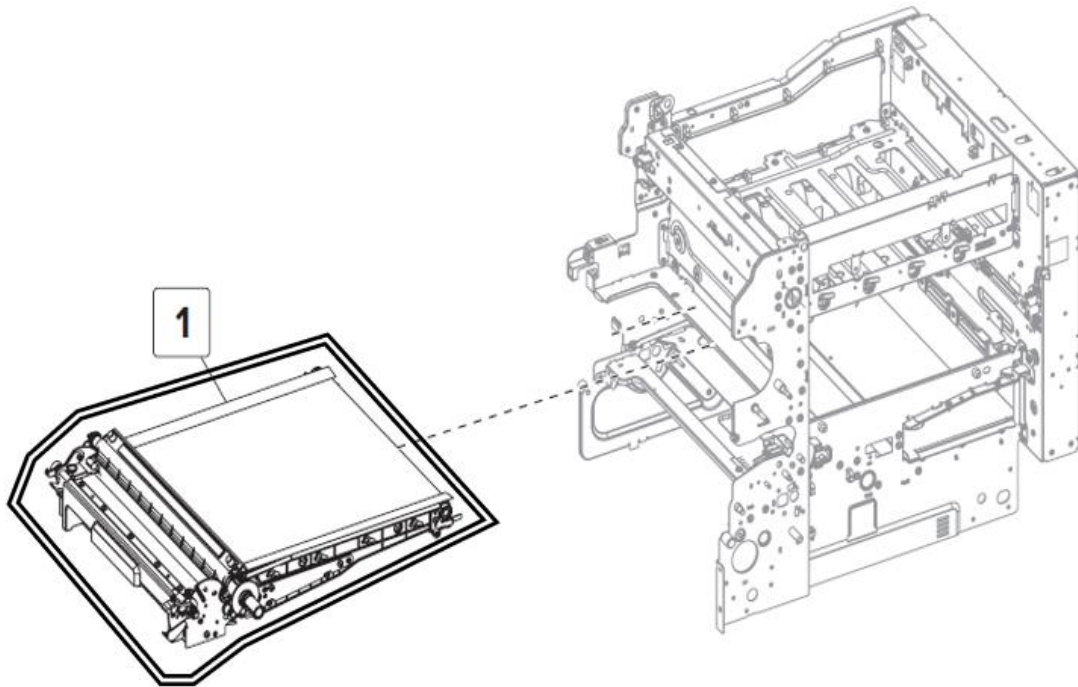


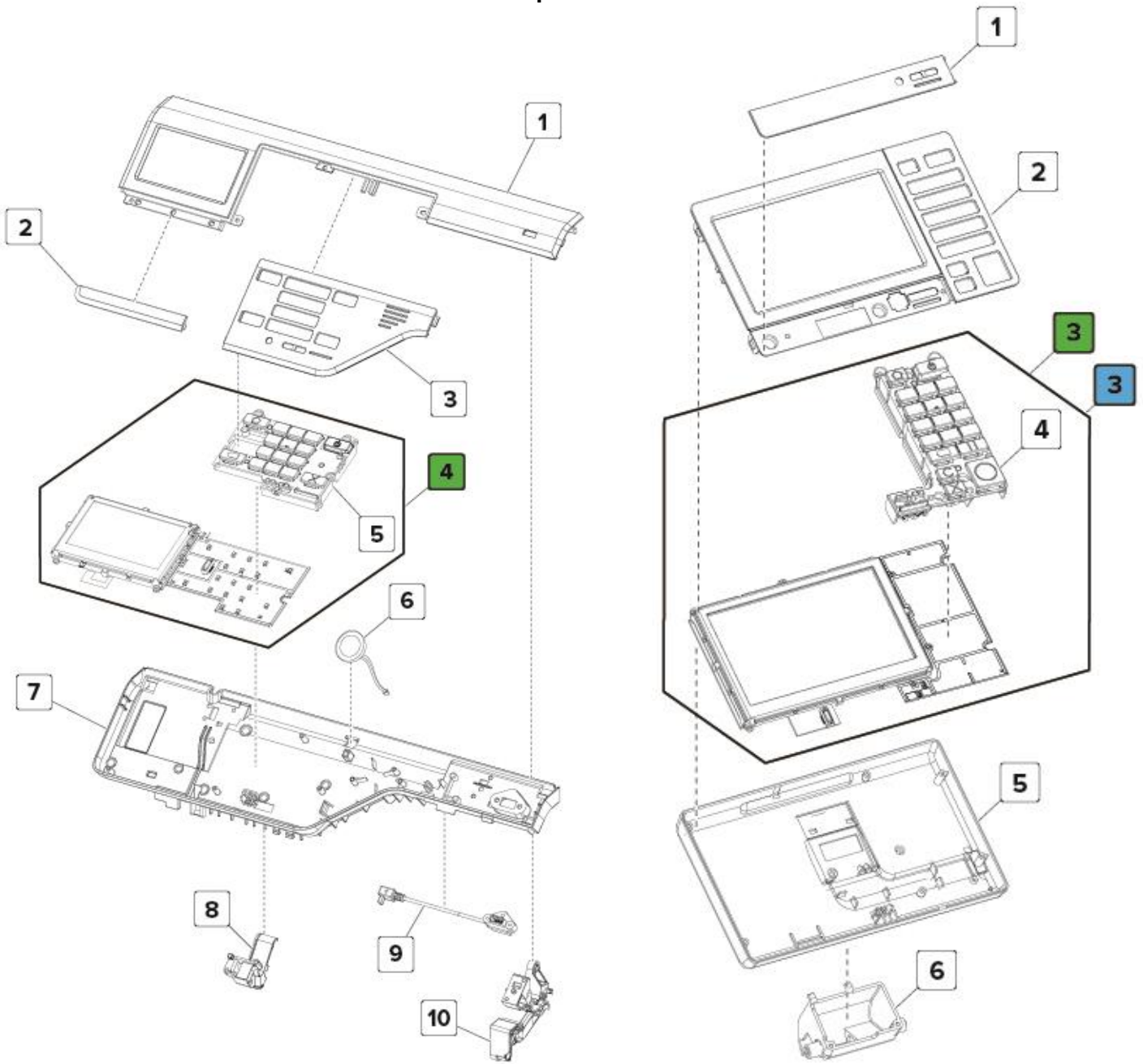
Image Transfer Unit (ITU)



**CS72x and CX72x Series
Location**

Printed Circuit Boards >10cm² and LCD > 100cm²

Op Panel



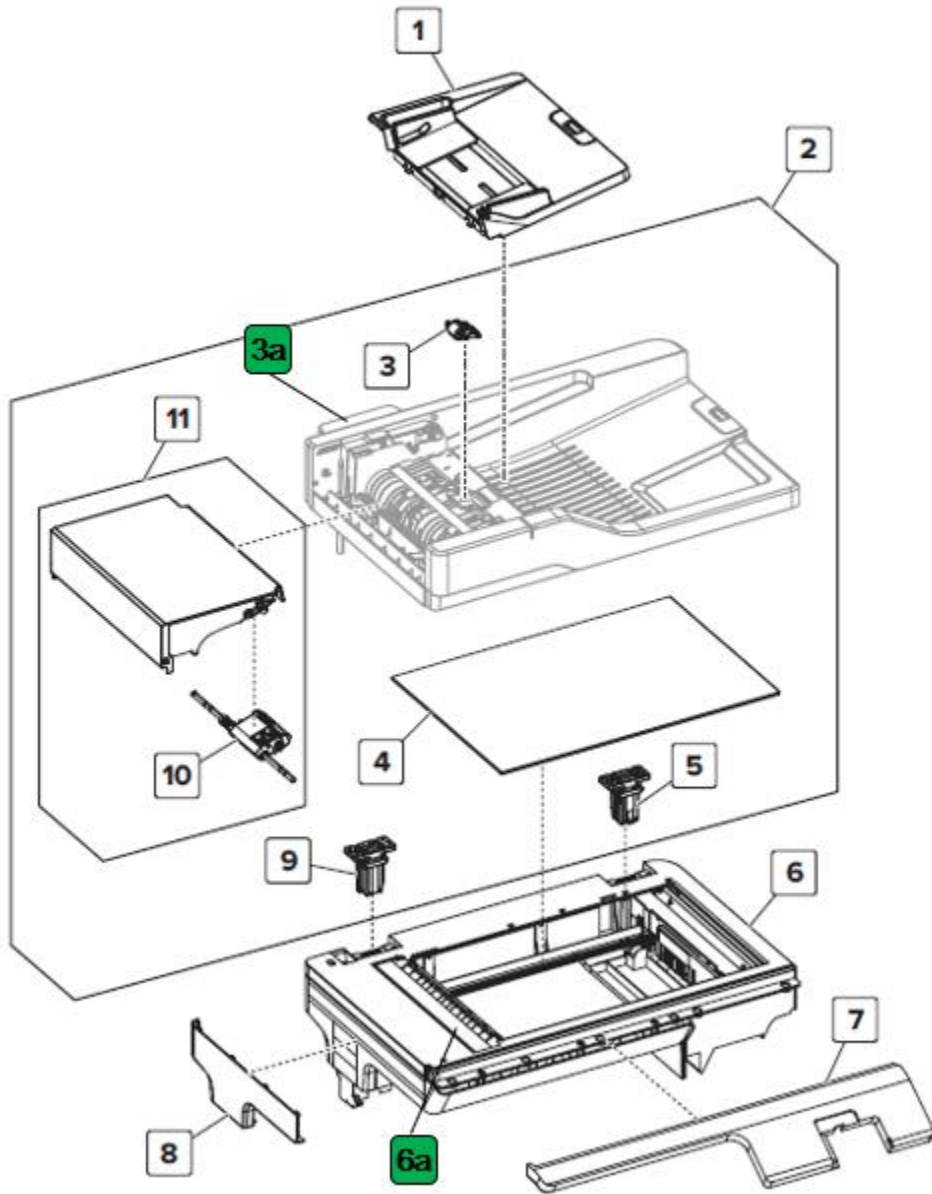
4.3in Op Panel

7in Op Panel

Index	Description
4	4.3in Op panel board within the assembly
3	7in Op panel board within the assembly
3	7in Op panel LCD

CS72x and CX72x Series
Location

Scanner

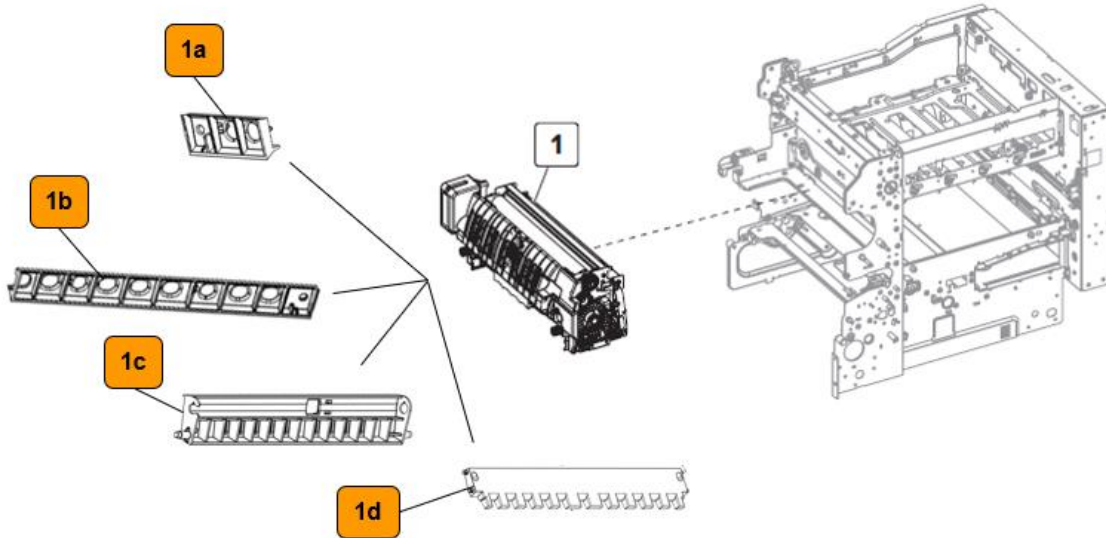


Index	Description
3a	ADF card within the assembly
6a	Flatbed CCD and LED bar module within the assembly

CS72x and CX72x Series
Location

Printed Circuit Boards >10cm²

Fuser

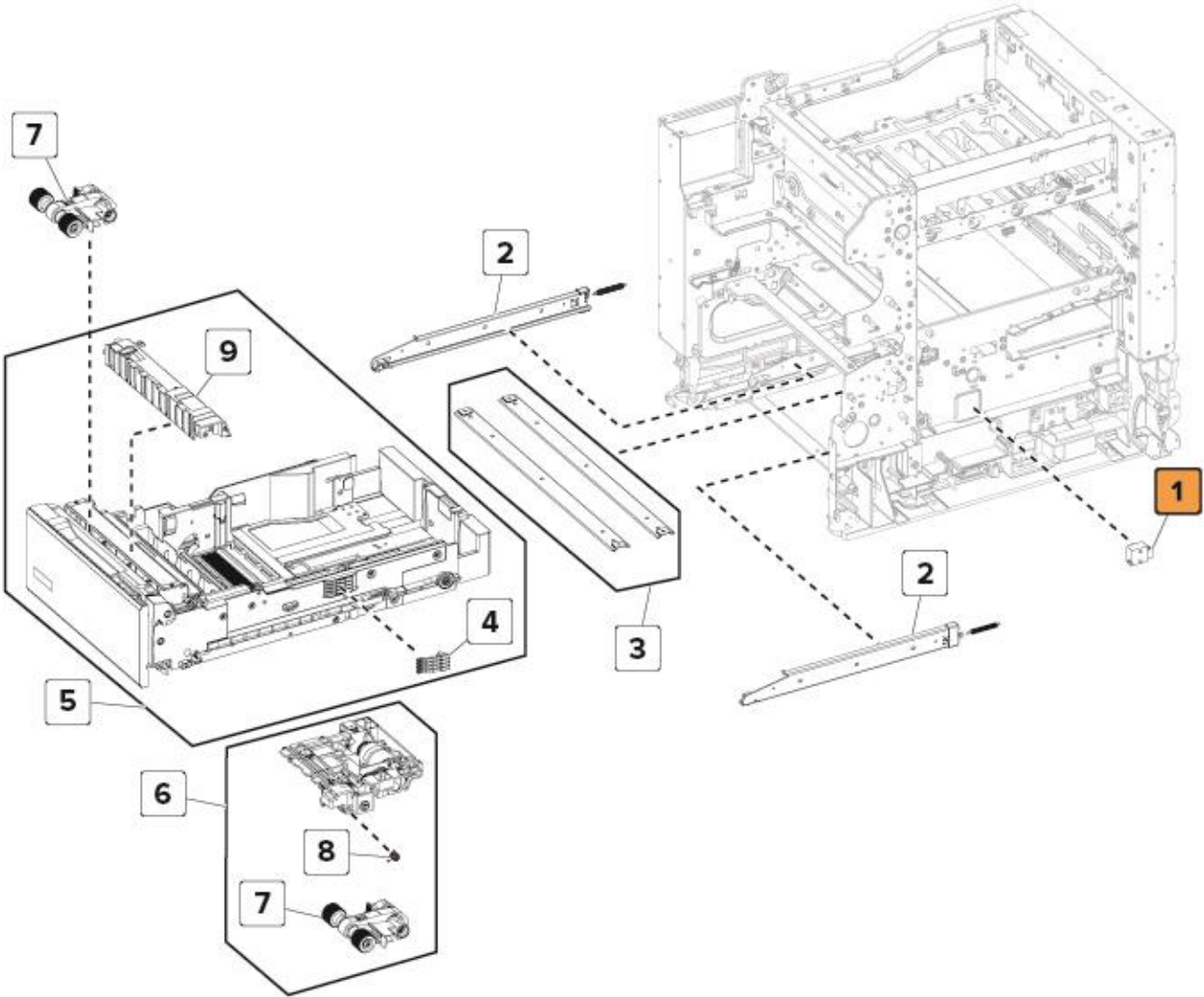


Index	Description
1a	40C0566 - BUR SIDE EXIT DS
1b	40C0567 - BUR SIDE EXIT NDS
1c	40C0568 - BELT SIDE EXIT
1d	40C0569 - ENTRY

**CS72x and CX72x Series
Location**

Printed Circuit Boards >10cm² and Brominated Plastic Components

Paper Feed

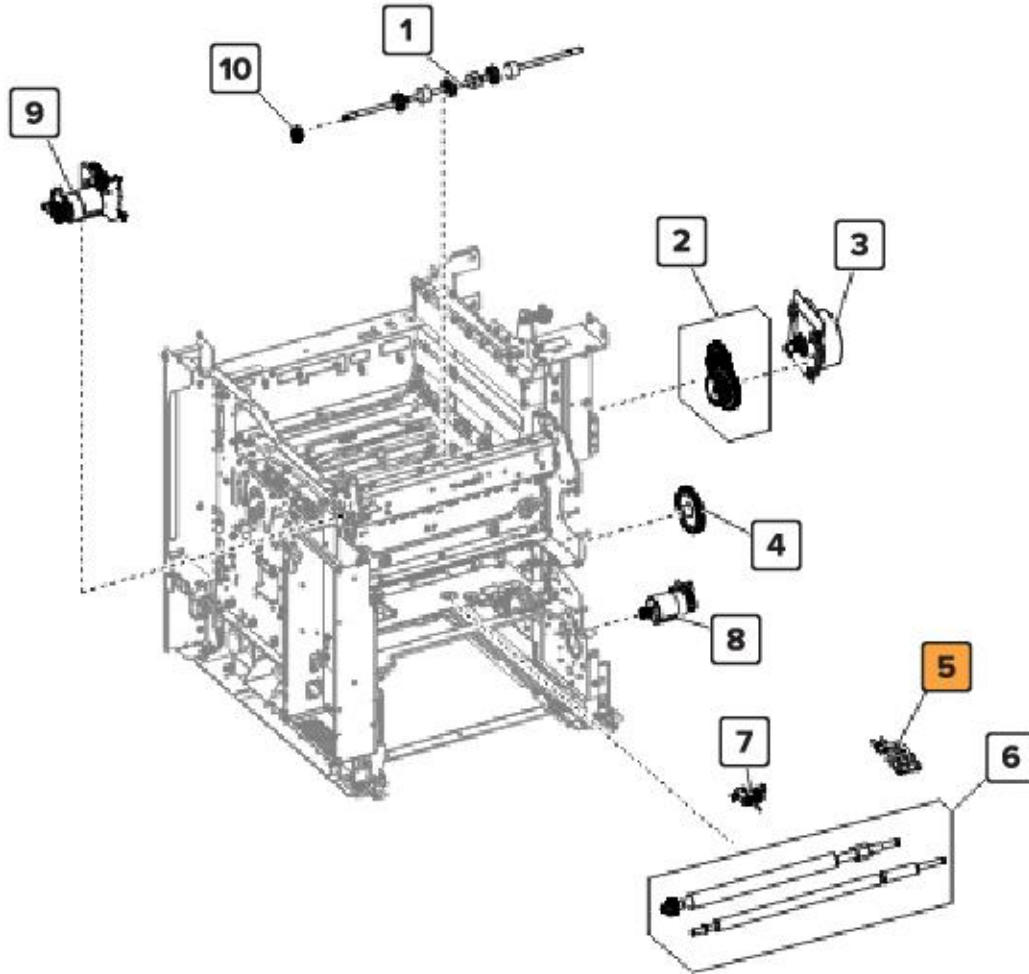


Index	Description
1	Sensor (paper size)

CS72x and CX72x Series
Location

Printed Circuit Boards >10cm² and Brominated Plastic Components

Paper Path 1

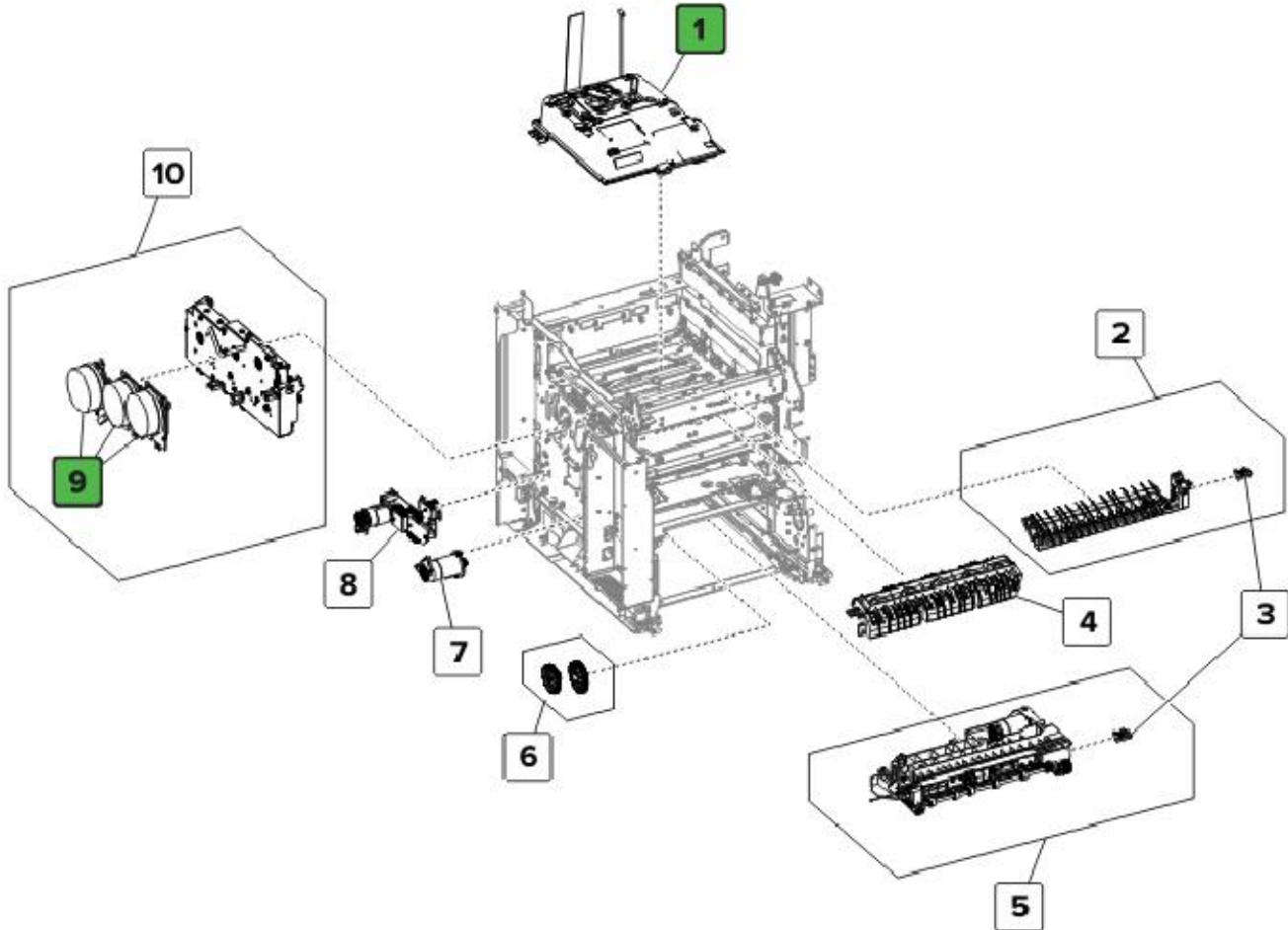


Index	Description
1	Sensor (media type)

CS72x and CX72x Series
Location

Printed Circuit Boards >10cm² and Brominated Plastic Components

Paper Path 2

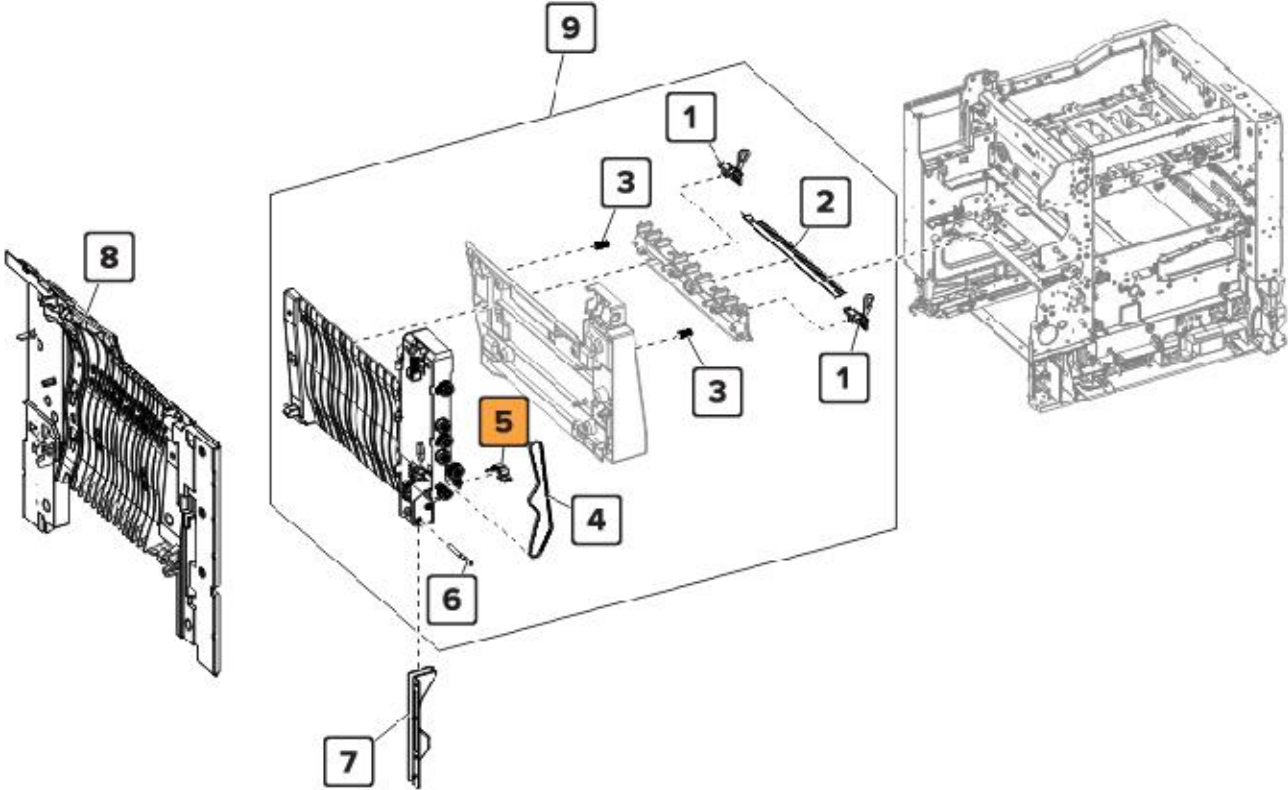


Index	Description
1	Printhead board within the assembly
9	Motor board within the assembly

CS72x and CX72x Series
Location

Printed Circuit Boards >10cm² and Brominated Plastic Components

Duplex

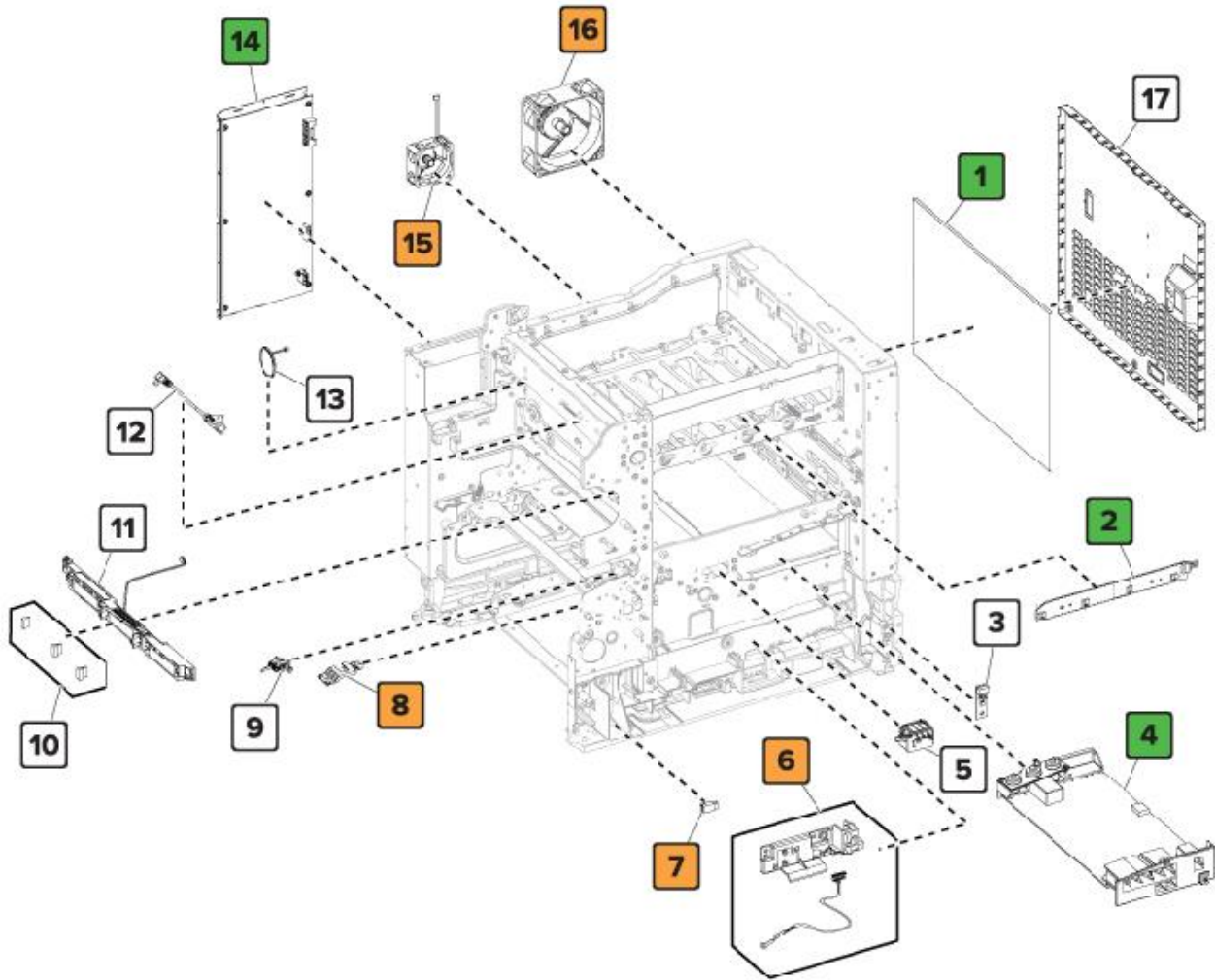


Index	Description
5	Sensor (duplex staging)

**CS72x and CX72x Series
Location**

Printed Circuit Boards >10cm² and Brominated Plastic Components

Electrical

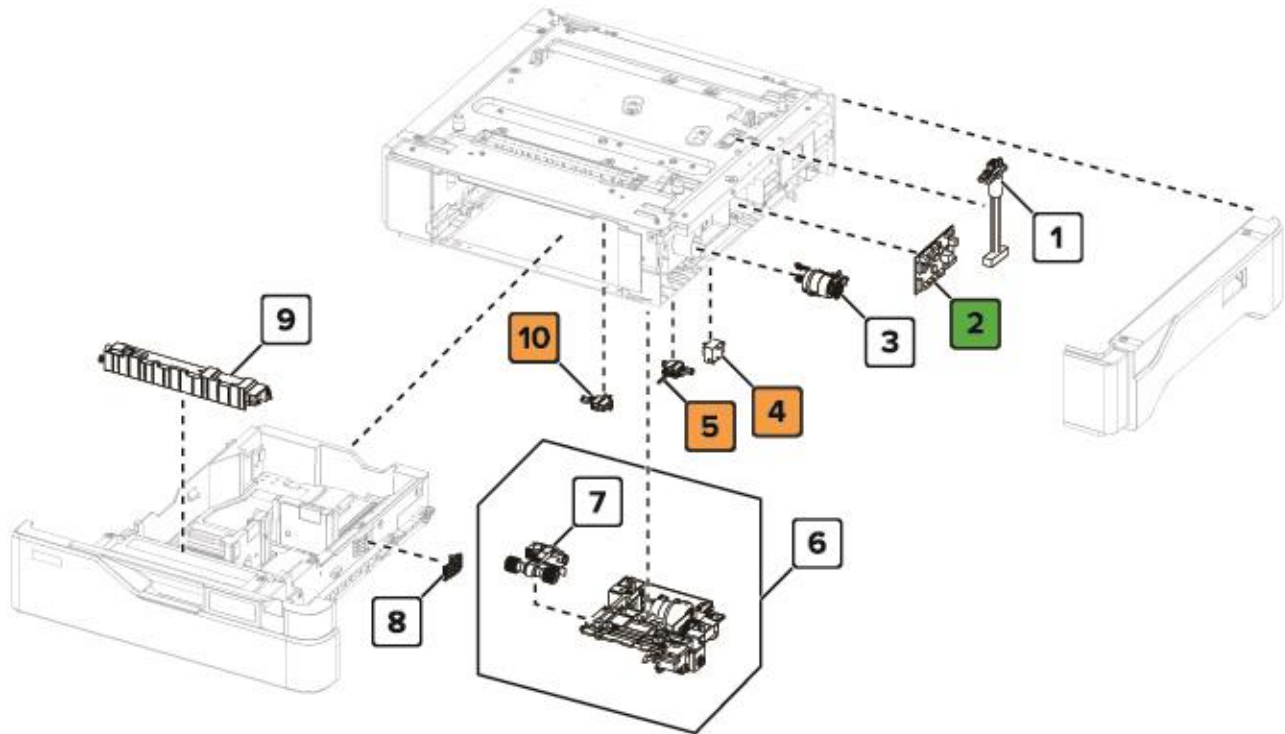


Index	Description
1	Controller board
2	TMC card
4	High voltage power supply
6	Sensor (waste toner contact)
8	Sensor (media type)
14	Low voltage power supply
15	Fuser fan
16	Main fan

CS72x and CX72x Series
Location

Printed Circuit Boards >10cm² and Brominated Plastic Components

550 Tray Option

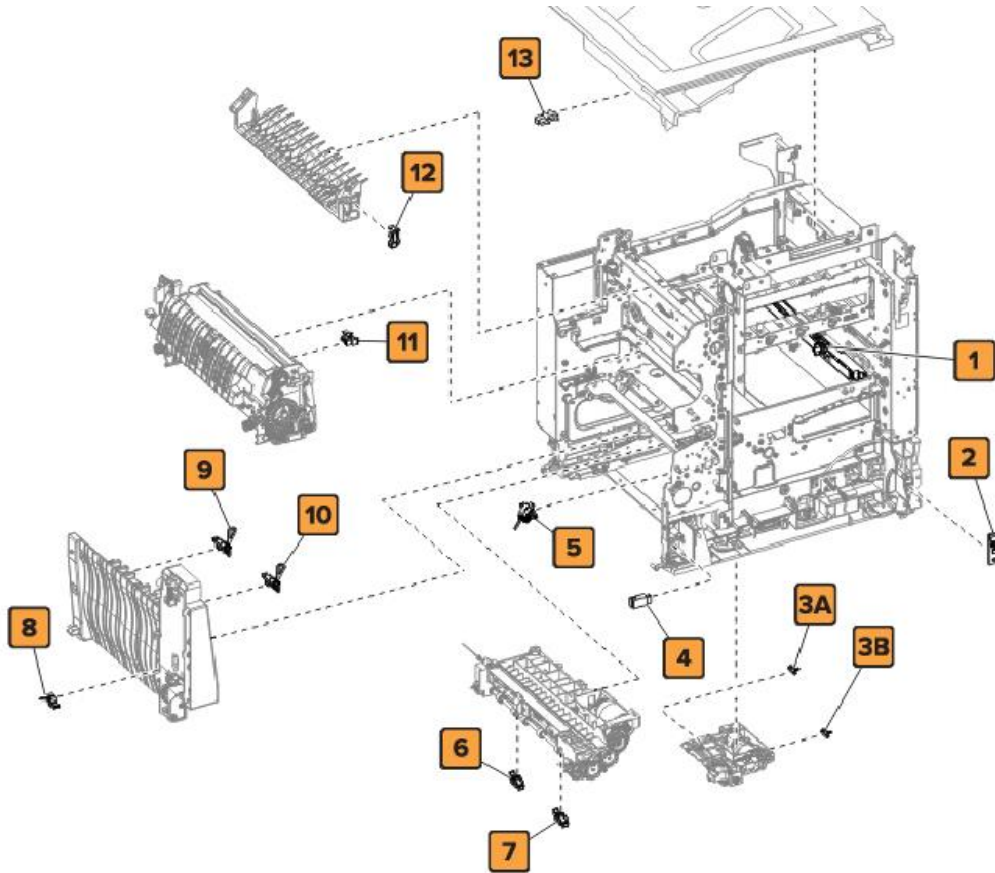


Index	Description
2	550-sheet tray controller board
4	Sensor (550-sheet tray paper size)
5	Sensor (550-sheet tray trailing edge)
10	Sensor (550-sheet tray passthrough)

**CS72x and CX72x Series
Location**

Brominated Plastic Components

Sensors



Index	Description
1	Sensor (TPS)
2	Sensor (weather station)
3A	Sensor (media out)
3B	Sensor (pick roller index)
4	Sensor (MPF paper present)
5	Sensor (input)
6	Sensor (tray 1 pick)
7	Sensor (MPF pass-through)
8	Sensor (duplex path 2)
9	Sensor (narrow media)
10	Sensor (fuser buckle)
11	sensor (fuser exit)
12	sensor (duplex path 1)
13	sensor (bin full)

**CS72x and CX72x Series
Location**

External Card Options



ISP

Annex A – Printer components with Brominated Flame Retardants

Index	Description	Parts Marking	Quantity	Location
1	40C0566 - BUR SIDE EXIT DS	PET-(GF+MD)40 FR(17)	1	Fuser
2	40C0567 - BUR SIDE EXIT NDS	PET-(GF+MD)40 FR(17)	1	
3	40C0568 - BELT SIDE EXIT	PET-(GF+MD)40 FR(17)	1	
4	40C0569 – ENTRY	PET-(GF+MD)40 FR(17)	1	
5	Sensor (paper size)	N/A	1	Paper Feed
6	Sensor (media type)	N/A	1	Paper Path 1
7	Sensor (duplex staging)	N/A	1	Duplex
8	Sensor (waste toner contact)	N/A	1	Electrical
9	Sensor (media type)	N/A	1	
10	Fuser fan	N/A	1	
11	Main fan	N/A	1	
12	Sensor (550-sheet tray paper size)	N/A	1	550 Tray Option
13	Sensor (550-sheet tray trailing edge)	N/A	1	
14	Sensor (550-sheet tray passthrough)	N/A	1	
15	Sensor (TPS)	N/A	1	Sensors
16	Sensor (weather station)	N/A	1	
17	Sensor (media out)	N/A	1	
18	Sensor (pick roller index)	N/A	1	
19	Sensor (MPF paper present)	N/A	1	
20	Sensor (input)	N/A	1	
21	Sensor (tray 1 pick)	N/A	1	
22	Sensor (MPF pass-through)	N/A	1	
23	Sensor (duplex path 2)	N/A	1	
24	Sensor (narrow media)	N/A	1	
25	Sensor (fuser buckle)	N/A	1	
26	sensor (fuser exit)	N/A	1	
27	sensor (duplex path 1)	N/A	1	

Annex B – Printed Circuit Boards >10cm²

Index	Description	Quantity	Location	CS72x/ C4150	CX72x/ XC41xx
1	4.3in Op panel board within the assembly	1	Op panel	X	
	7in Op panel board within the assembly	1			X
2	Printhead board within the assembly	1	Paper path 2	X	X
3	Motor board within the assembly	3		X	X
4	Controller board	1	Electrical	X	X
5	TMC card	1		X	X
6	High voltage power supply	1		X	X
7	Low voltage power supply	1		X	X
8	550-sheet tray controller board	1	550 Tray Option	X	X
9	ADF card	1	Scanner		X
10	Flatbed CCD/ LED bar	1			X

Annex C– Electrical and Electronic (EE) Customer Replaceable Paper Handling Devices

Index	PN	Description	Locations	CS72x/ C4150	CX72x/ XC41xx
1	21K0567	550-Sheet Tray	550 Tray Option	X	X

Annex D – Electrical and Electronic (EE) Customer Replaceable Internal/ External Card Options

Index	PN	Description	Locations	CS72x/ C4150	CX72x/ XC41xx
1	57X9020 57X9801	Memory options	Attached to Controller board	X	X
2	27X0400	Hard Disk Drive		X	X
3	40C9200 40C9201 40C9202	Firmware cards		X	X
4	57X9810 57X9812 57X9814 57X9815	Font cards		X	X
5	57X0300 57X0301	Authentication card readers		X	X
6	14F0100 14F0000	Interface cards		X	X
7	27X0803	IPS	External card options		
8	41X0556	Maintenance Kit Fuser	Fuser	X	X
9	41X0253	Fuser		X	X
10	40X9929	Image Transfer Unit	ITU	X	X