

Disassembly of Waste Electrical and Electronic Equipment (WEEE) Manual

EU Waste Electronic and Electrical Equipment Directive require producers to provide information of the different electronic and electrical materials and components found in their products at its end-of-life, and disassembly references to treatment and recycling facilities.

The disassembly information for this product has been prepared for use by a recognized treatment or recycling facility and is not intended to be used by others.

1. Product information
2. Materials and components list for selective treatment
3. Disassembly tools
4. Disassembly references

The following information is intended only for the use of treatment and recycling facilities.

1. Product information

Model name(s)—Indicate all model name(s) within the product family

Model name

Lexmark CS820 series –

Lexmark CS820de, Lexmark CS820dte, Lexmark CS820dtfe, Lexmark C6160, Lexmark CS827de

Lexmark CX82x series –

Lexmark CX820de, Lexmark CX820dtfe, Lexmark XC6152, CX827de

Lexmark CX825de, Lexmark CX825dte, Lexmark CX825dtfe

Lexmark CX860 series –

Lexmark CX860de, Lexmark CX860dte, Lexmark CX860dtfe, Lexmark XC8160

** Add rows as needed*

2. Materials and components list for selective treatment

Items	Quantity	Notes
Polychlorinated biphenyls (PCB) containing capacitors	0	N/A
Mercury containing components, such as switches or backlighting lamps	0	N/A
Batteries	1	Lithium Manganese Dioxide coin cell located on the Controller board
Printed circuit boards greater than 10 cm²	multiple	18 – CS820 series 22 – CX82x and CX860 series See details in Annex D For Options, see details Annex E
Toner cartridges, liquid and pasty, as well as colour toner	9	4 – Toner cartridges 4 – Developer units 1 – Waste toner bottle

Plastic containing brominated flame retardants	multiple	29 – CS820 series 39 – CX82x and CX860 series See details in Annex A and B For Options, see details in Annex C
Asbestos waste and components which contain asbestos	0	N/A
Cathode ray tubes	0	N/A
Chlorofluorocarbons (CFC), Hydrochlorofluorocarbons (HCFC) or Hydrofluorocarbons (HFC), Hydrocarbons (HC)	0	N/A
Gas discharge lamps	0	N/A
Liquid Crystal Display (LCD) greater than 100 cm² and those back-lighted with Gas discharge lamps	0	N/A
External electrical cables	1	Power cord located on the rear of the printer
Components containing refractory fibres	0	N/A
Components containing radioactive substances	0	N/A
Electrolyte capacitors containing substances of concern (<i>capacitors with height > 25 mm, diameter > 25 mm or proportionately similar volume</i>)	multiple	1 – LVPS 1 – MSHPF power supply See Electronics-rear
Electrical and Electronic (EE) Customer Replaceable Paper handling devices	multiple	See details in Annex F
Electrical and Electronic (EE) Customer Replaceable Internal/External Card options	multiple	See details in Annex G

3. Disassembly tools

Item
#2 Phillips screwdriver, magnetic
Wire cutter
E-clip puller or small flat-head screwdriver
T9 screwdriver

4. Disassembly references

4.1. Removal procedure(s)

WEEE materials and components removal procedures are available upon request.

Contact: recycling@lexmark.com

4.2. Graphical illustration of material's and component's location



LCD >100 cm² are identified with cyan-filled boxes



PCBs >10 cm² are identified with green-filled boxes



Printer components containing Brominated flame retardants are identified with orange-filled boxes

Lexmark CS82x, CX82x, CX860 series Supplies Location

Toner Cartridge

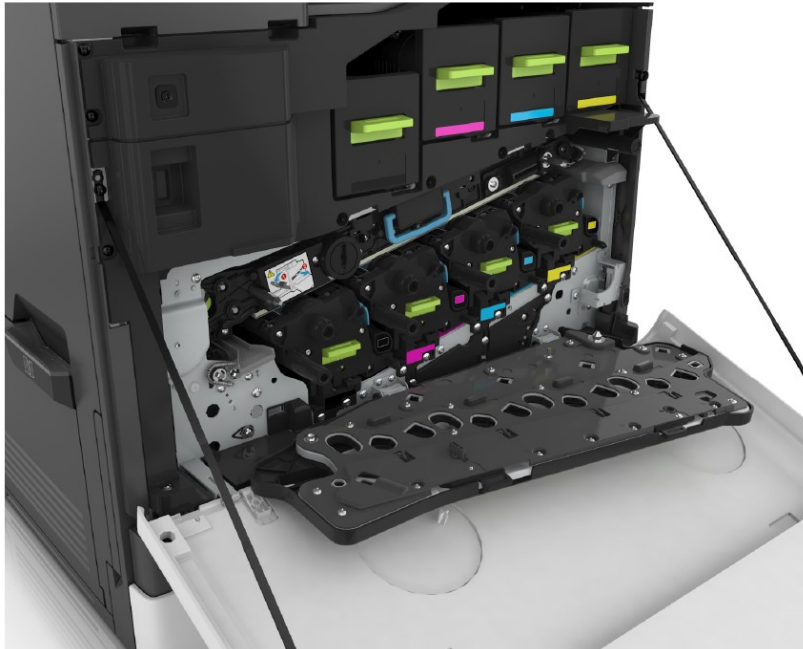


Waste Toner Bottle



Lexmark CS820, CX82x, CX860 series
Location

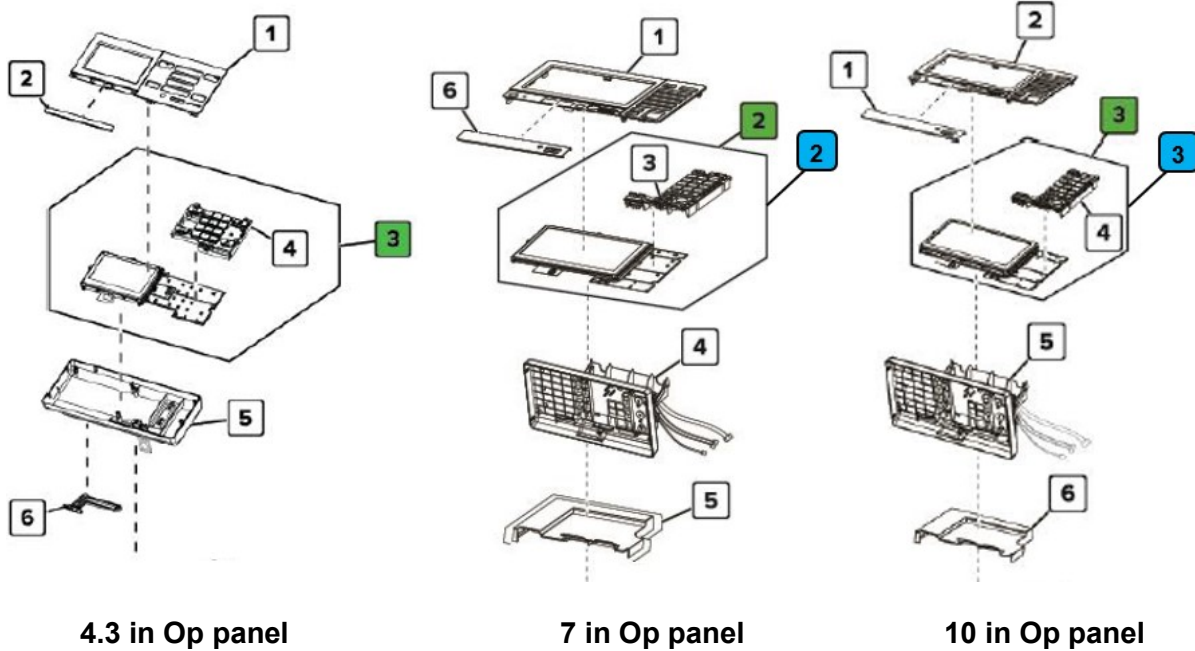
Developer Units



Lexmark CS820, CX82x, CX860 series
Location

Printed Circuit Boards >10cm² and LCD > 100cm²

Op panel



Index	Description
4	4.3in Op panel board within the assembly
2	7in Op panel board within the assembly
2	7in Op panel LCD
3	10in Control panel board within the assembly
3	10in Control panel LCD

Lexmark CS82x, CX82x, CX860 series
Location

Printed Circuit Boards >10cm² and Brominated Plastic Components

Toner Cartridge

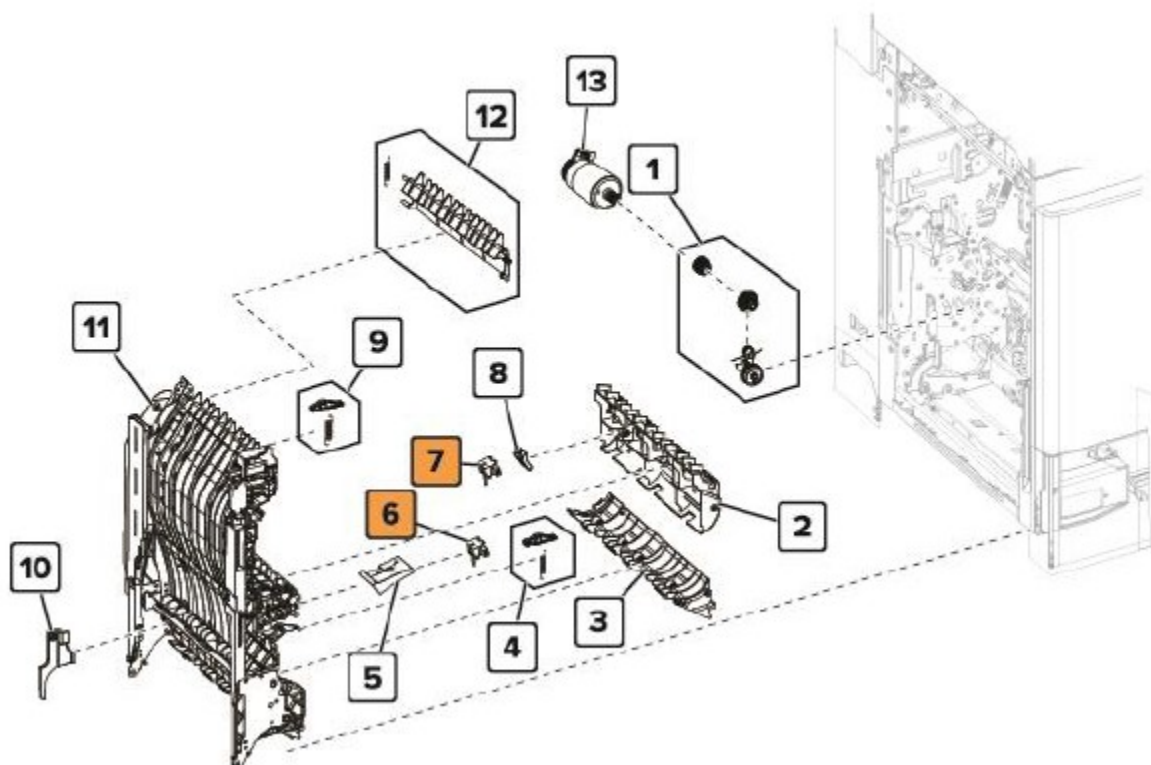


Index	Description
1	Toner cartridge memory card within the assembly

Lexmark CS82x, CX82x, CX860 series
Location

Printed Circuit Boards >10cm² and Brominated Plastic Components

Duplex

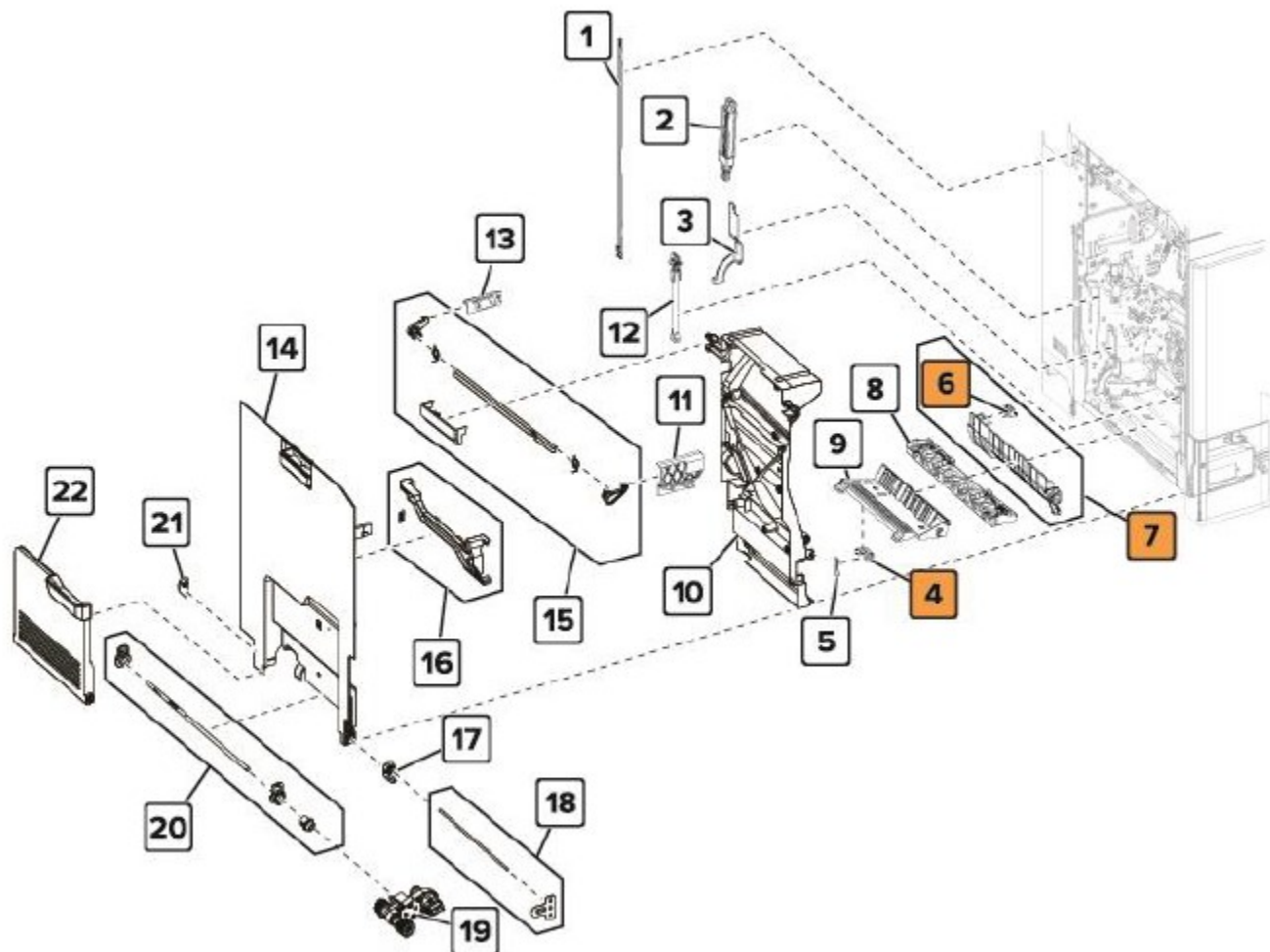


Index	Description
6	Sensor (duplex path 2)
7	Sensor (duplex path 1)

Lexmark CS82x, CX82x, CX860 series
Location

Printed Circuit Boards >10cm² and Brominated Plastic Components

Left Door

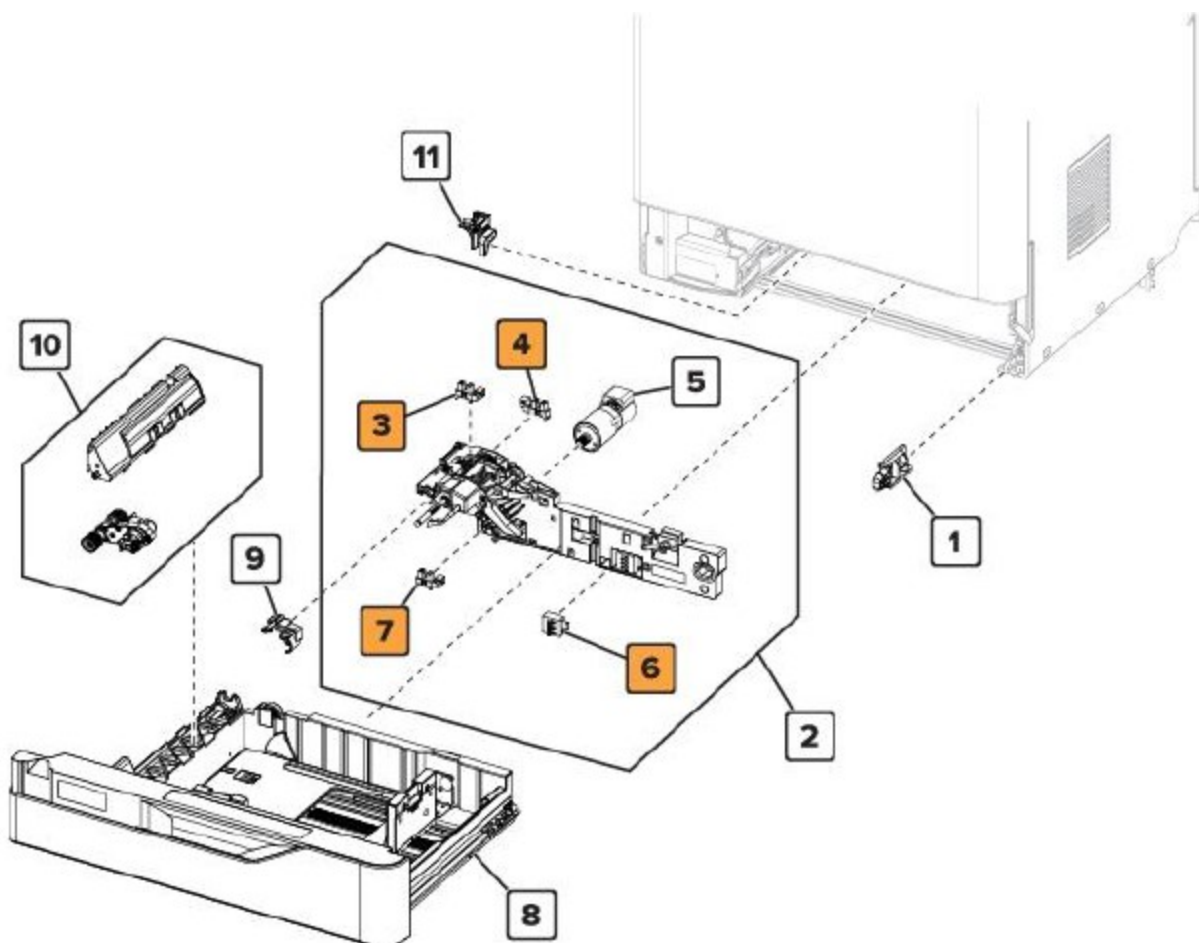


Index	Description
4	Sensor (MPF paper present)
6	Sensor (MPF/pass-through)
7	Deflector with sensor (MPF/pass-through)

Lexmark CS82x, CX82x, CX860 series
Location

Printed Circuit Boards >10cm² and Brominated Plastic Components

Feeder

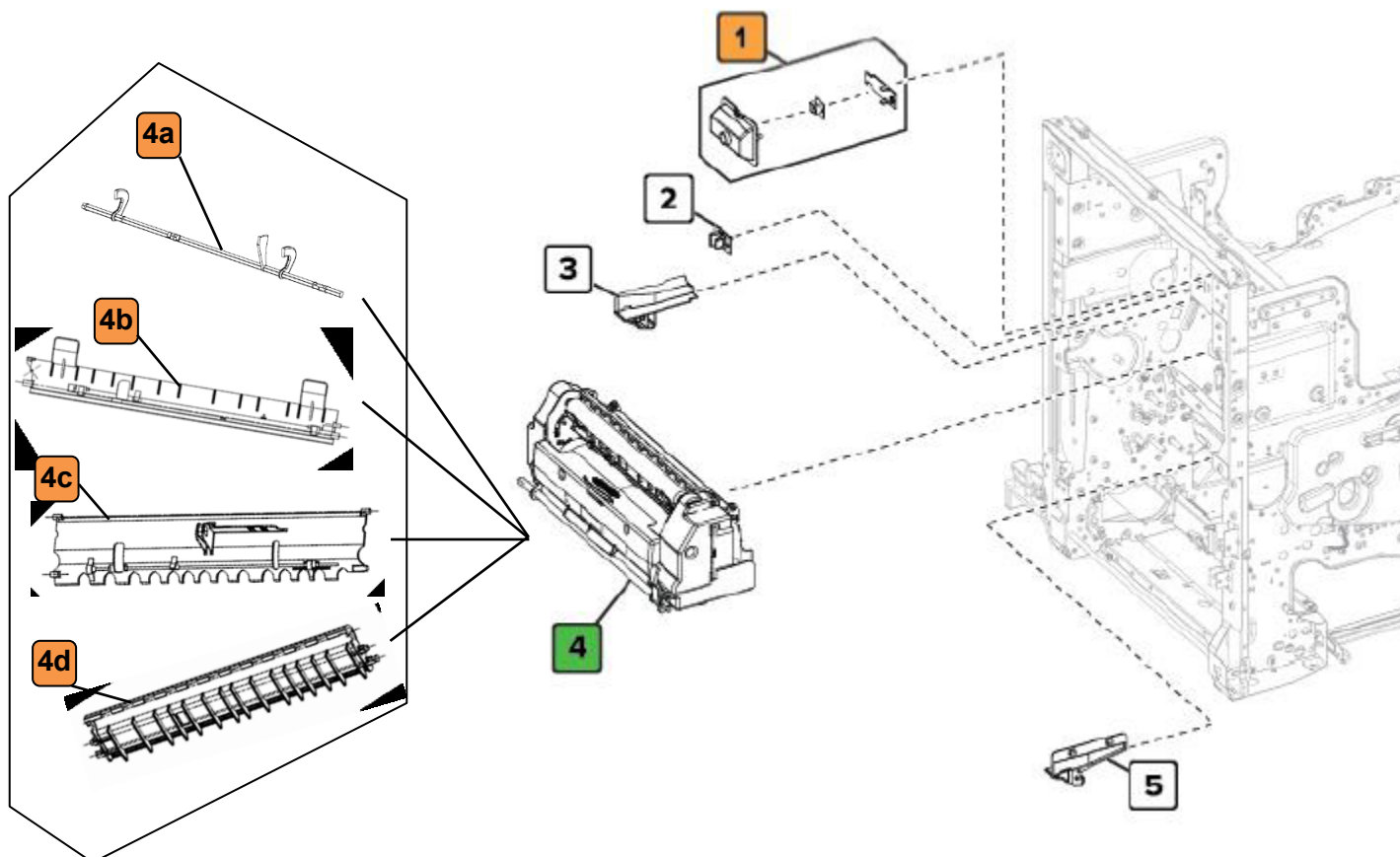


Index	Description
3	Sensor (pick roller index)
4	Sensor (media out)
6	Sensor (media size)
7	Sensor (media low)

Lexmark CS82x, CX82x, CX860 series
Location

Printed Circuit Boards >10cm² and Brominated Plastic Components

Fuser

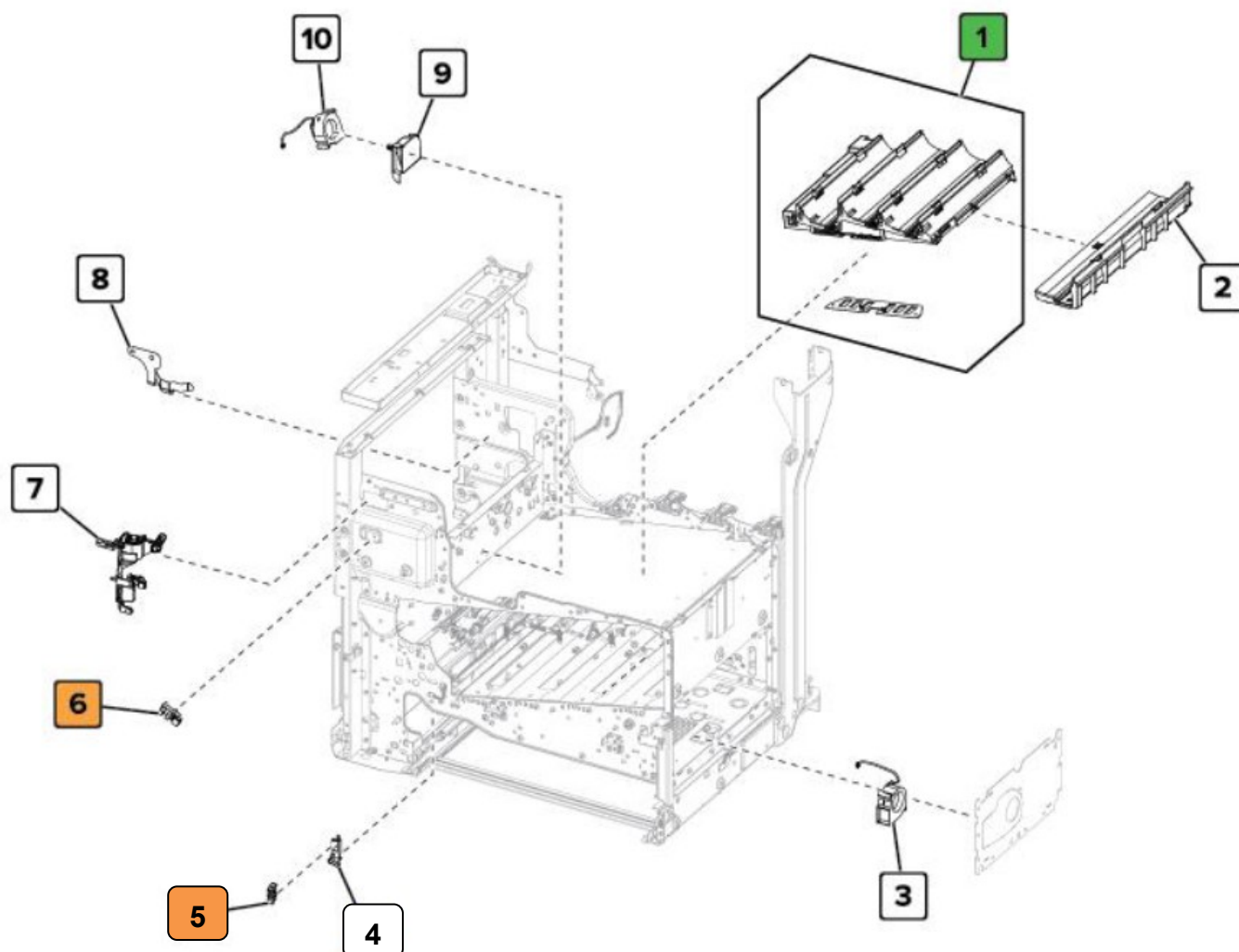


Index	Description
1	Sensor (fuser temperature)
4	Fuser board within the assembly
4a	21K1216 - Flag
4b	21K1245 - Guide Exit BUR Side
4c	21K1383 - Guide Exit Belt Side
4d	21K1246 - Entry Fuser

Lexmark CS82x, CX82x, CX860 series
Location

Printed Circuit Boards >10cm² and Brominated Plastic Components

Electronics – Front

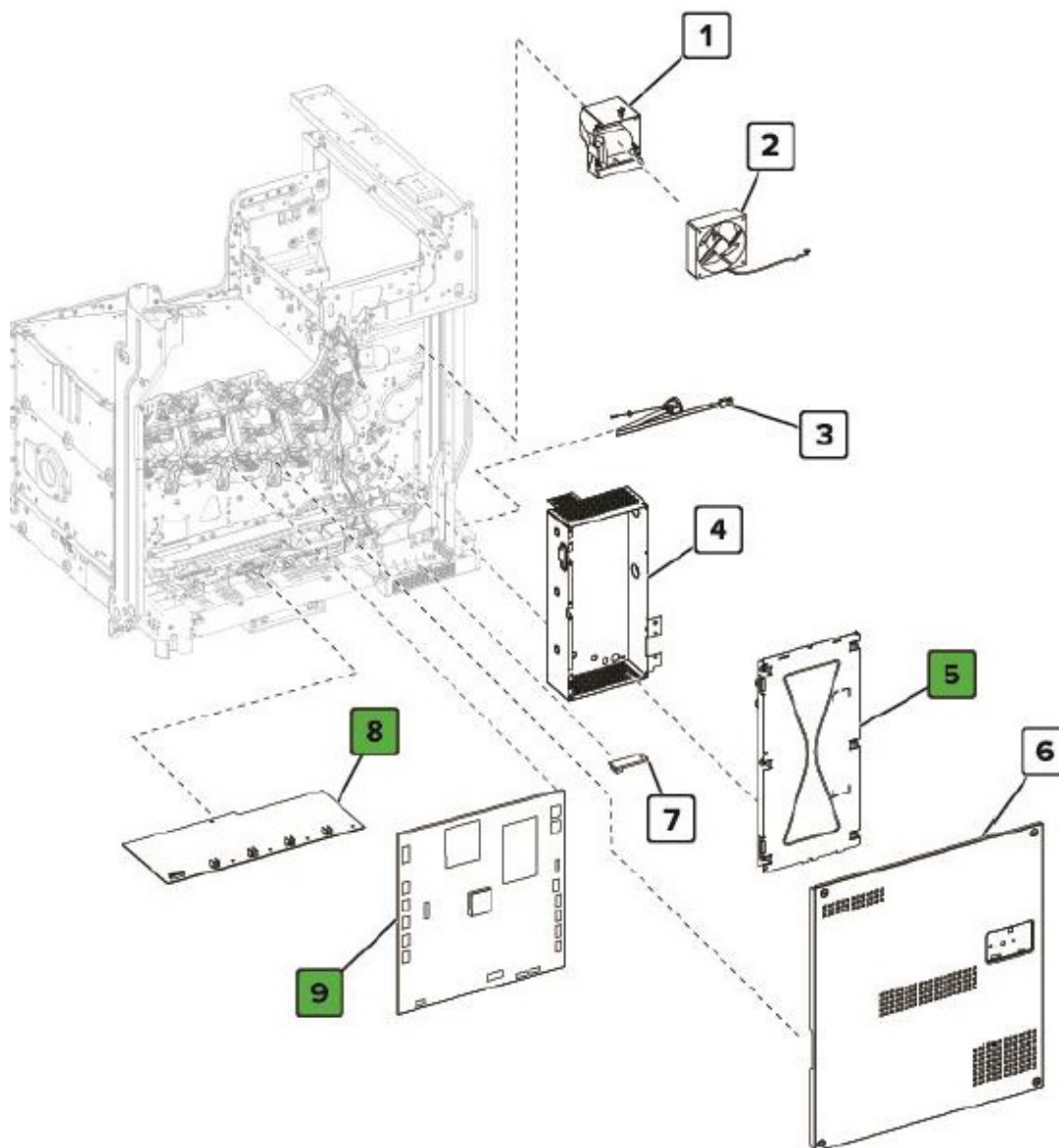


Index	Description
1	Main HVPS
5	Sensor (waste toner bottle present)
6	Sensor (door interlock)

Lexmark CS82x, CX82x, CX860 series
Location

Printed Circuit Boards >10cm² and Brominated Plastic Components

Electronics – Rear

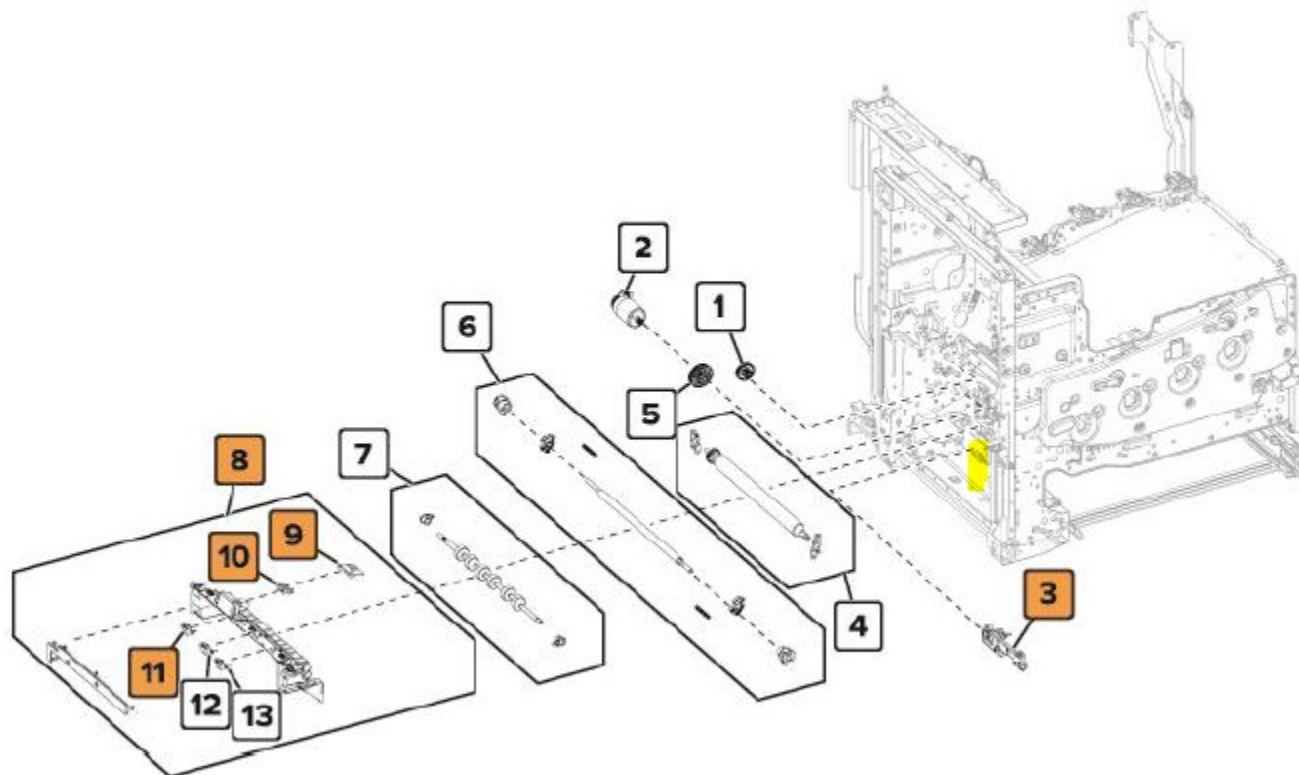


Index	Description
5	LVPS
8	Charge roller HVPS
9	Controller board

Lexmark CS82x, CX82x, CX860 series
Location

Printed Circuit Boards >10cm² and Brominated Plastic Components

Registration

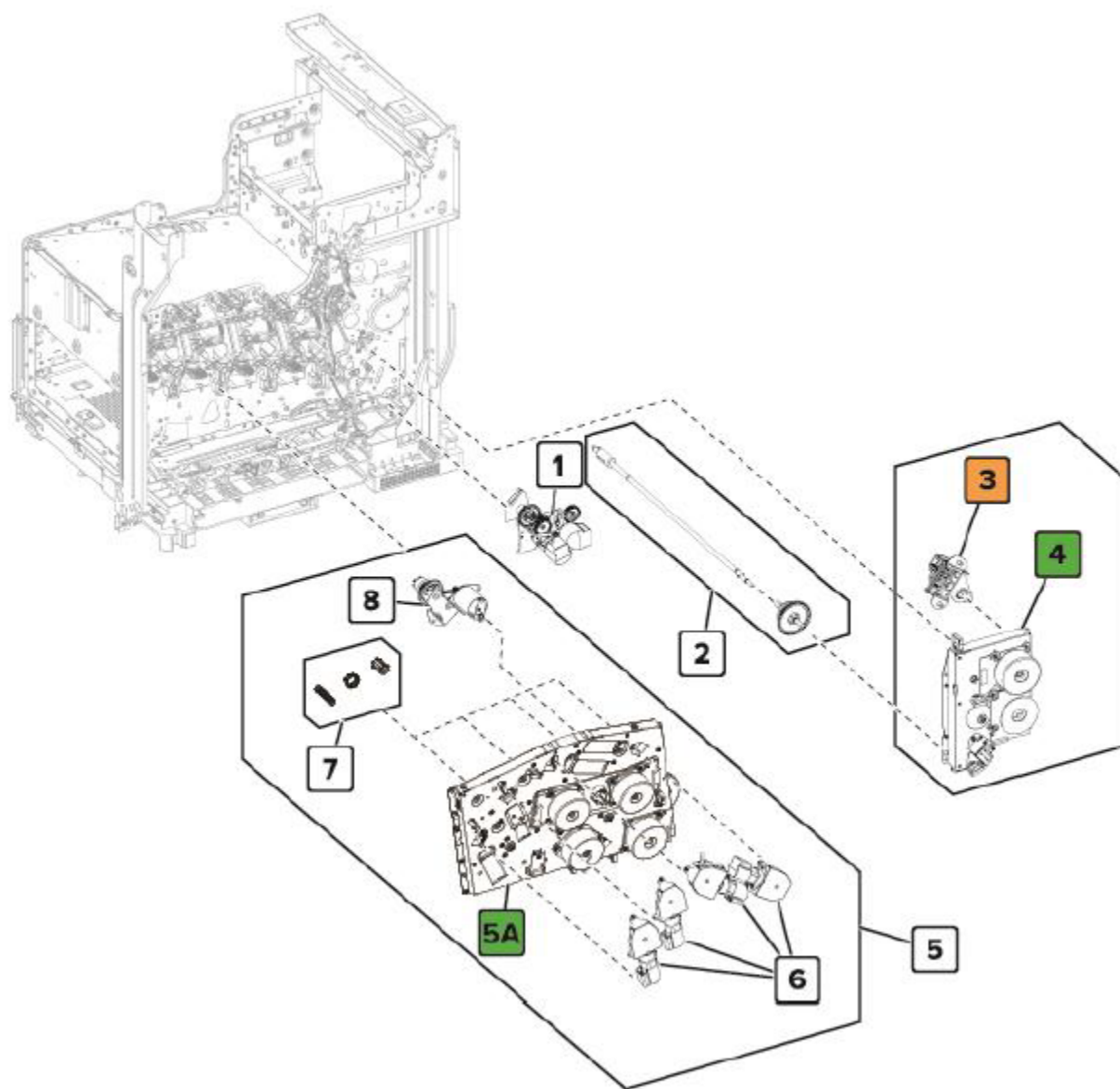


Index	Description
3	Sensor (input)
8	Sensor (deskew roller exit)
9	Sensor (near narrow media)
10	Sensor (narrow media)
11	Sensor (deskew roller entry)

Lexmark CS82x, CX82x, CX860 series
Location

Printed Circuit Boards >10cm² and Brominated Plastic Components

Motors

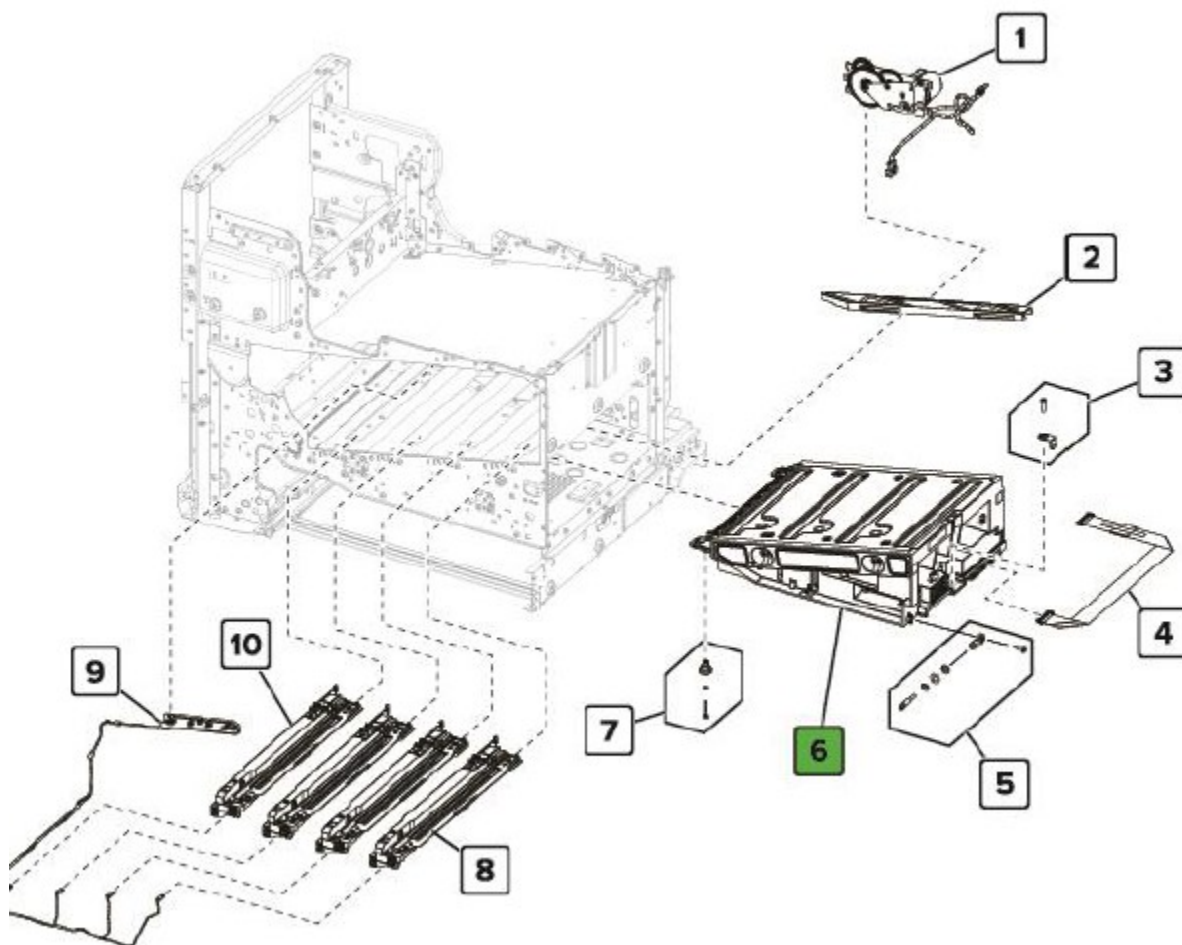


Index	Description
3	Sensor (waste toner full)
4	Fuser/transfer belt motor gearbox
5A	EP, developer, toner add gearbox

Lexmark CS82x, CX82x, CX860 series
Location

Printed Circuit Boards >10cm² and Brominated Plastic Components

Printhead

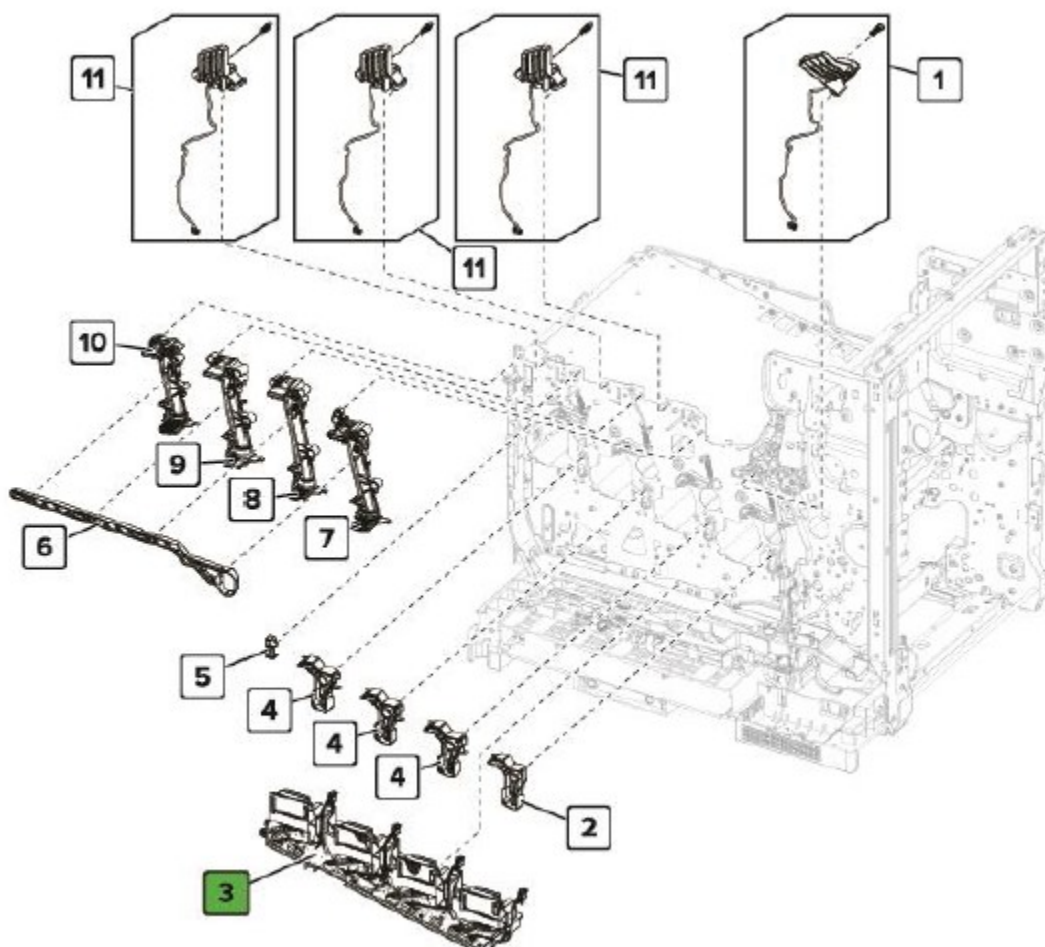


Index	Description
6	Laser printhead board within the assembly

Lexmark CS82x, CX82x, CX860 series
Location

Printed Circuit Boards >10cm² and Brominated Plastic Components

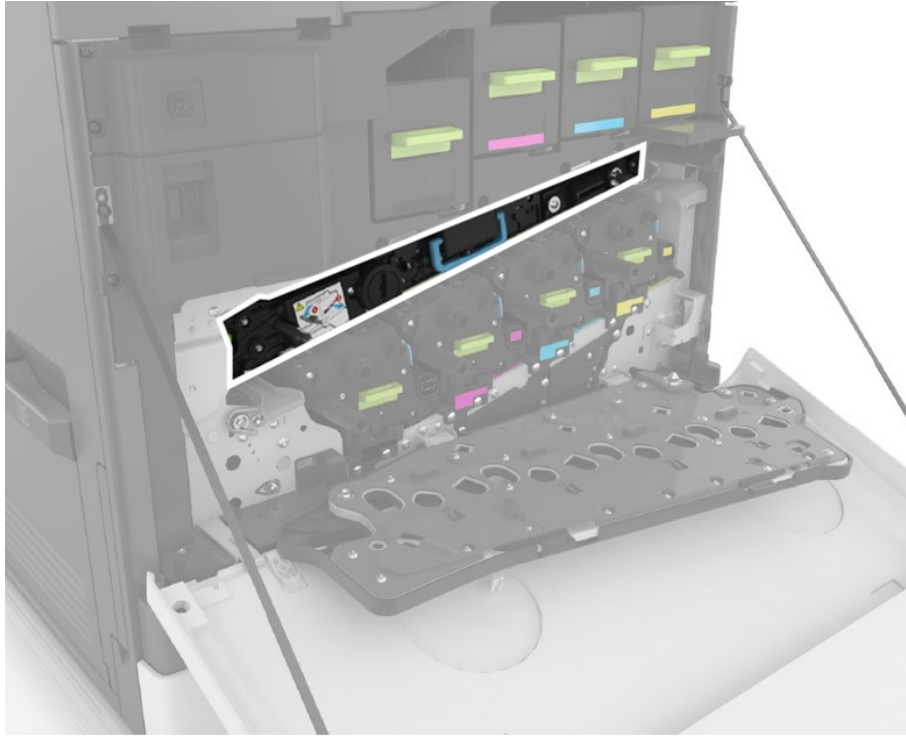
Toner Supply



Index	Description
3	Smart chip interface board

Lexmark CS82x, CX82x, CX860 series
Location

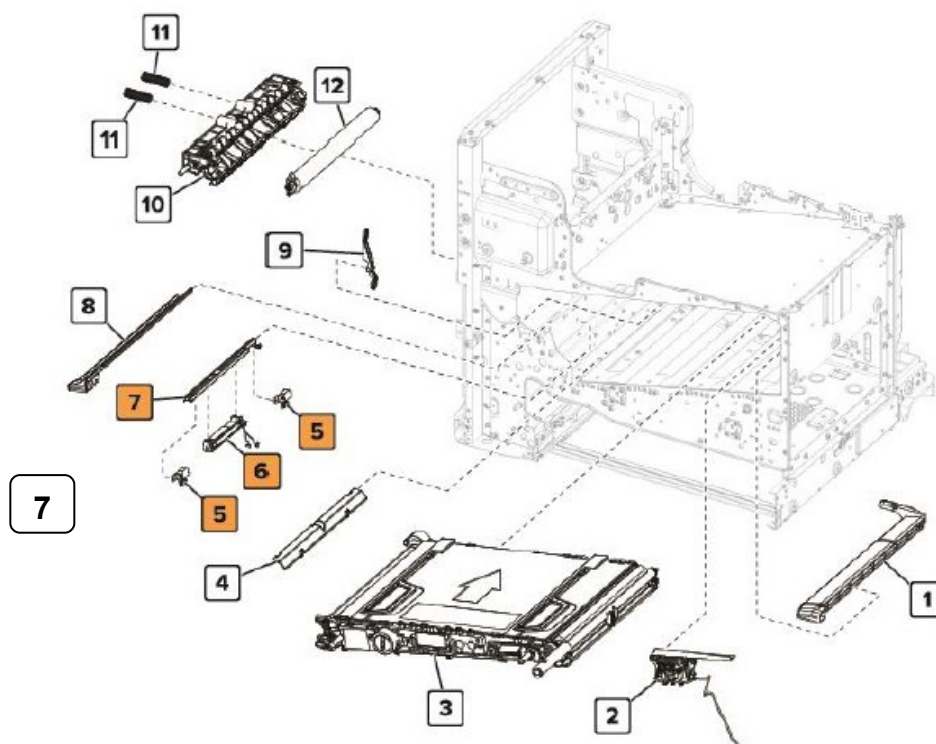
Transfer belt



Lexmark CS82x, CX82x, CX860 series
Location

Printed Circuit Boards >10cm² and Brominated Plastic Components

Transfer Front

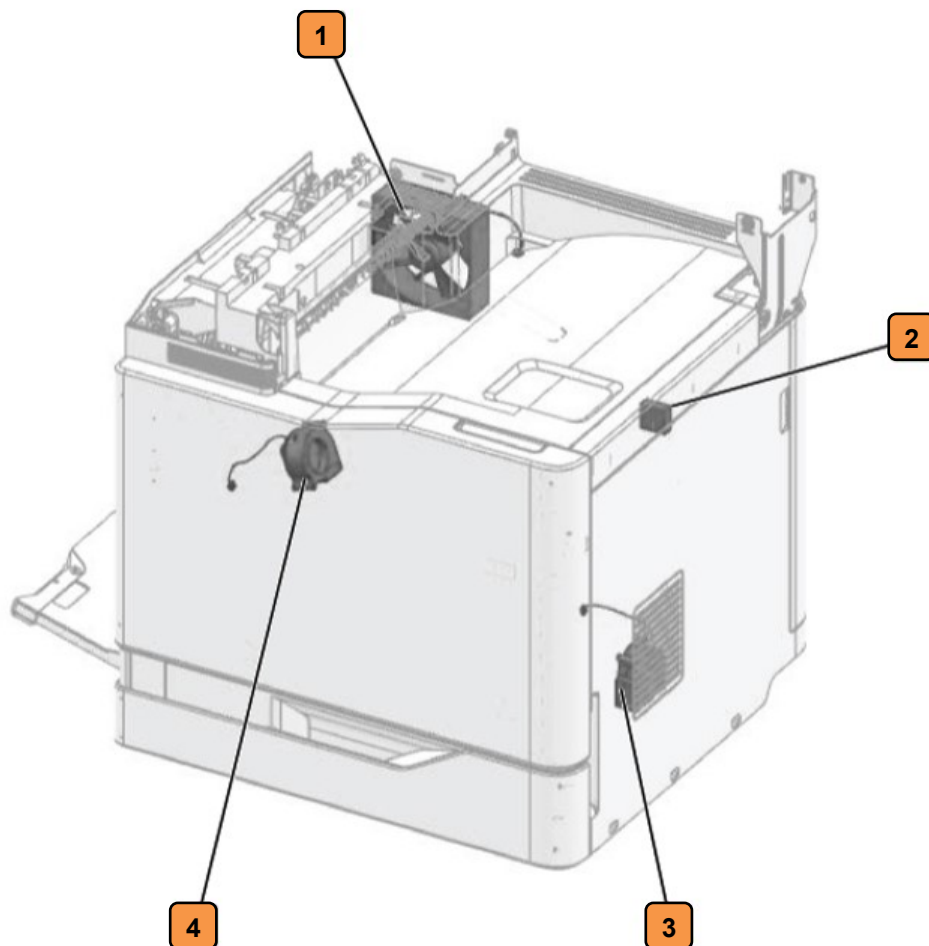


Index	Description
5	Sensor (auto alignment)
6	Sensor (TPS)

Lexmark CS820, CX82x, CX860 series
Location

Brominated Plastic Components

Fans

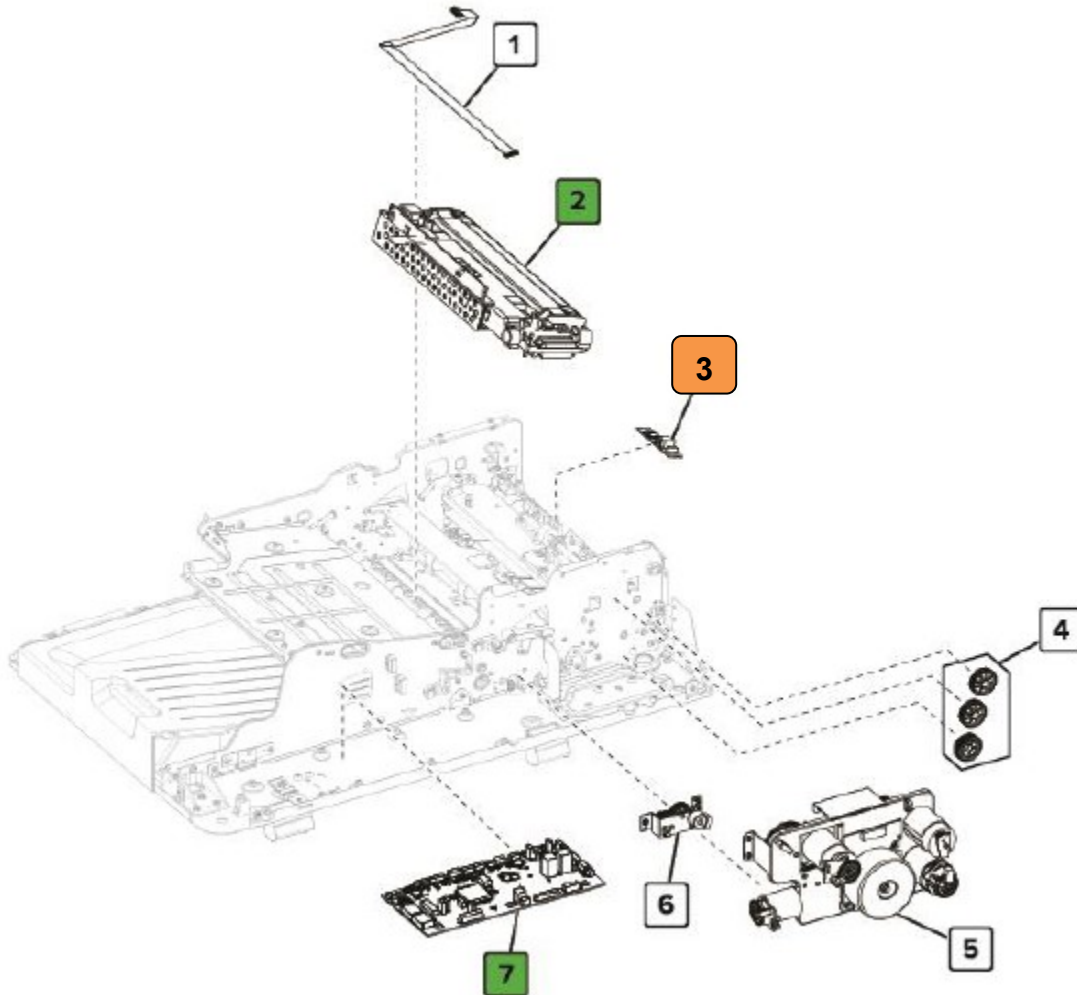


Index	Description
1	Main fan
2	Controller board fan
3	Printhead fan
4	HVPS fan

Lexmark CX82x, CX860 series
Location

Printed Circuit Boards >10cm² and Brominated Plastic Components

ADF 4

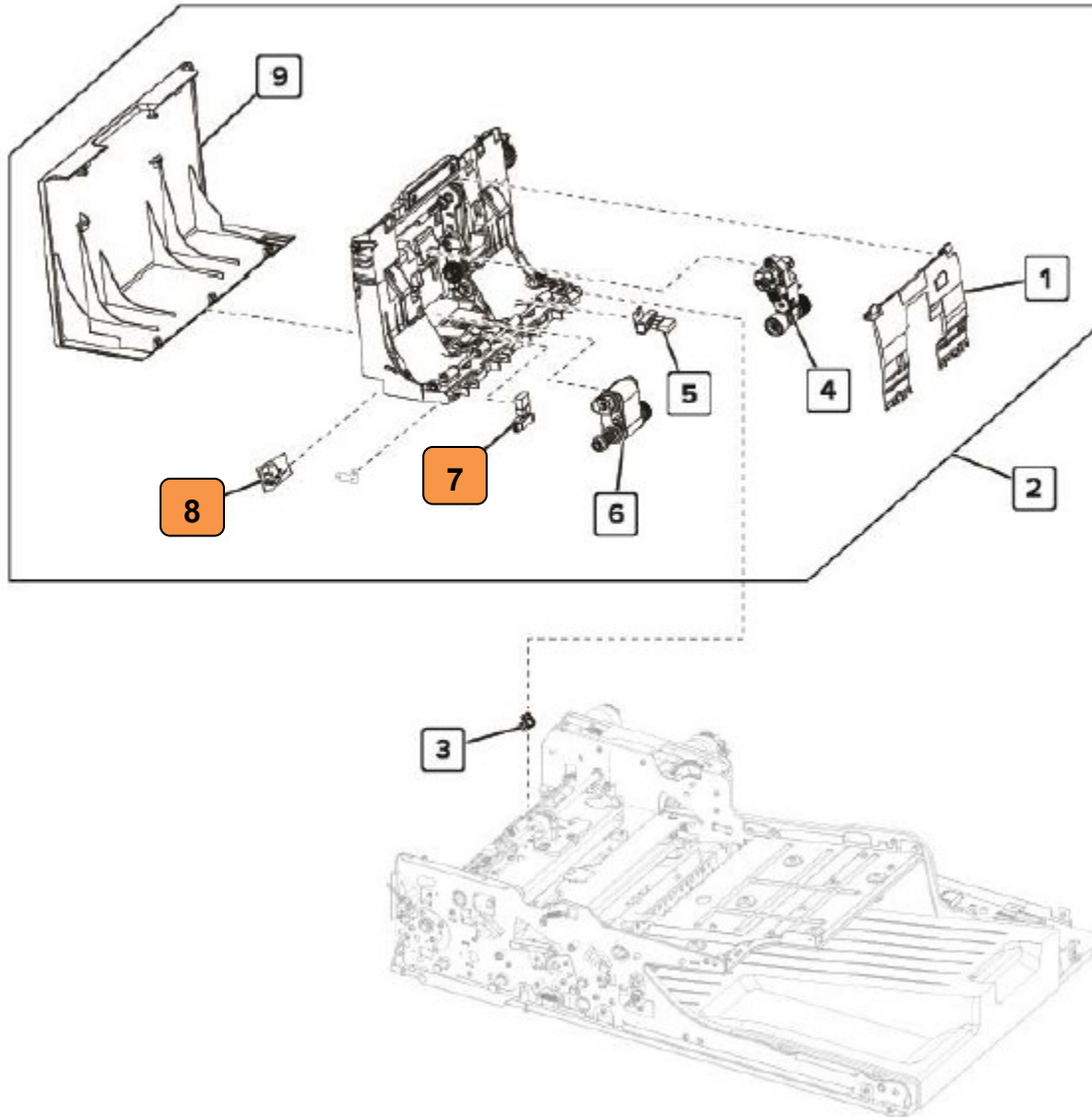


Index	Description
2	CCDM, ADF board within the assembly
3	Sensor (ADF multifeed receiver)
7	ADF controller board

Lexmark CX82x, CX860 series
Location

Printed Circuit Boards >10cm² and Brominated Plastic Components

ADF 5

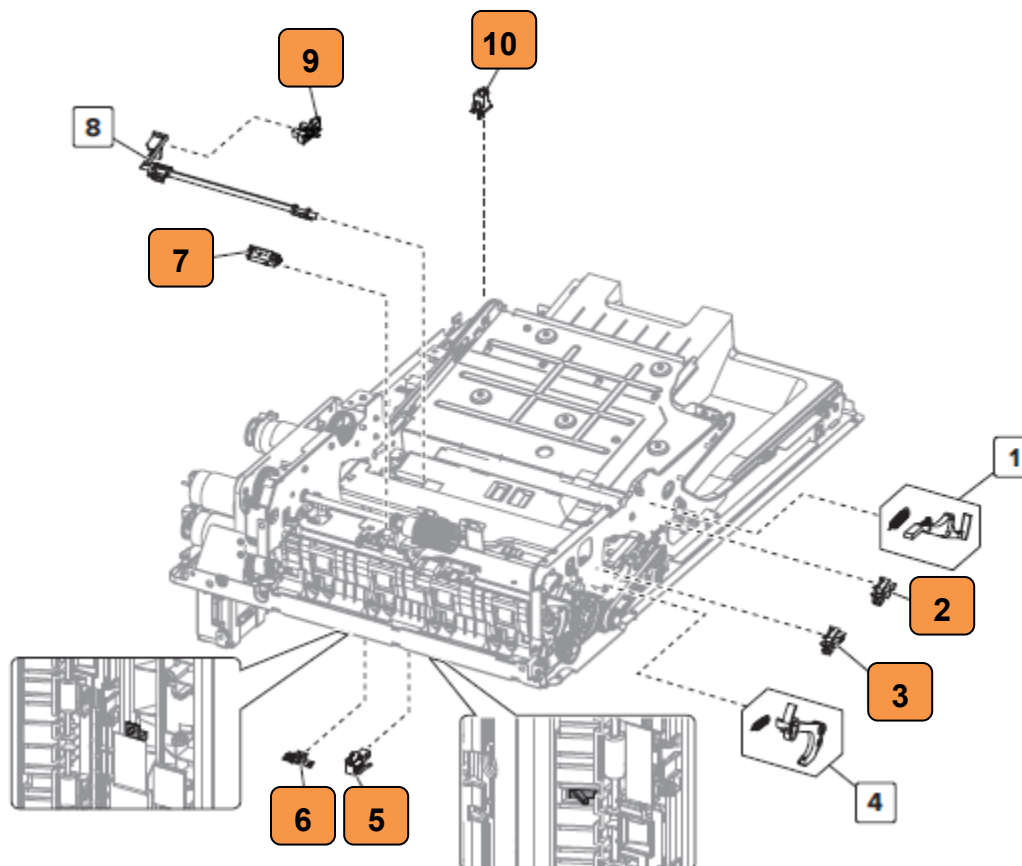


Index	Description
7	Sensor (ADF deskew)
8	Sensor (ADF multifeed transmitter)

Lexmark CX82x, CX860 series
Location

Printed Circuit Boards >10cm² and Brominated Plastic Components

ADF 6

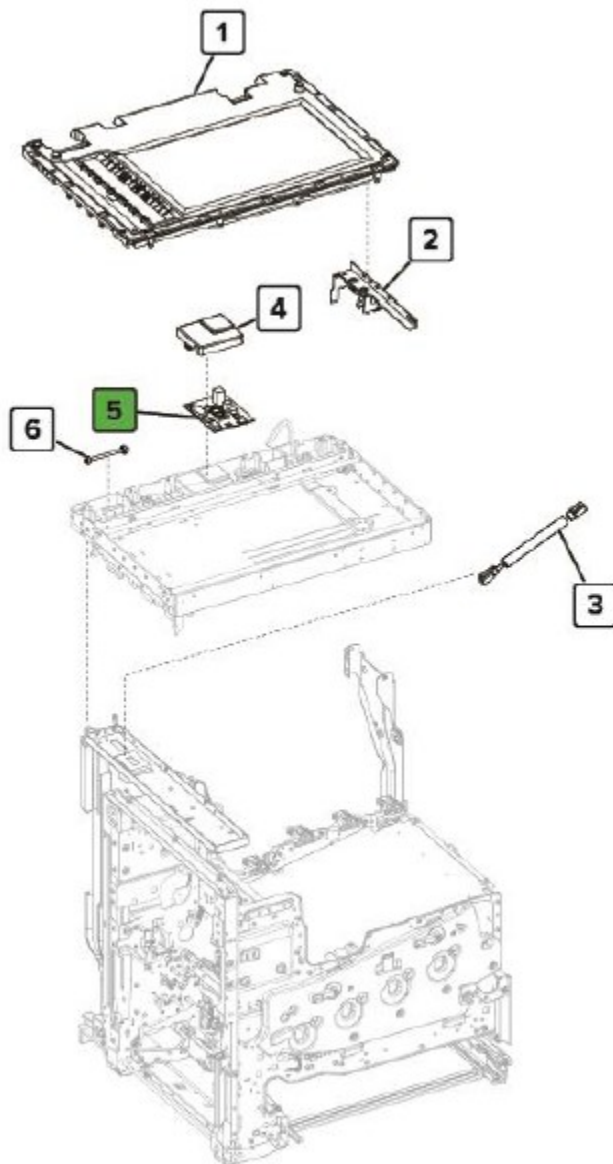


Index	Description
2	Sensor (ADF top door interlock)
3	Sensor (ADF bottom door interlock)
5	Sensor (ADF 2nd scan)
6	Sensor (ADF 1st scan)
7	Sensor (ADF pick)
9	Sensor (ADF media exit)
10	Sensor (ADF closed)

Lexmark CX82x, CX860 series
Location

Printed Circuit Boards >10cm² and Brominated Plastic Components

Flatbed Scanner 2

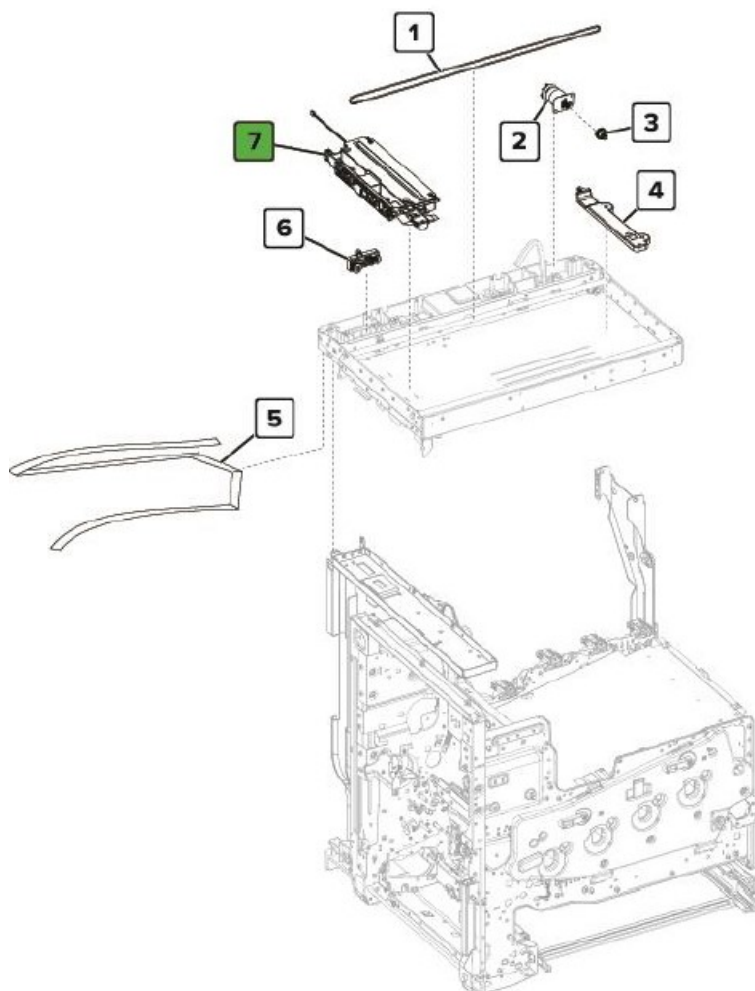


Index	Description
5	Flatbed scanner board

Lexmark CX82x, CX860 series
Location

Printed Circuit Boards >10cm² and Brominated Plastic Components

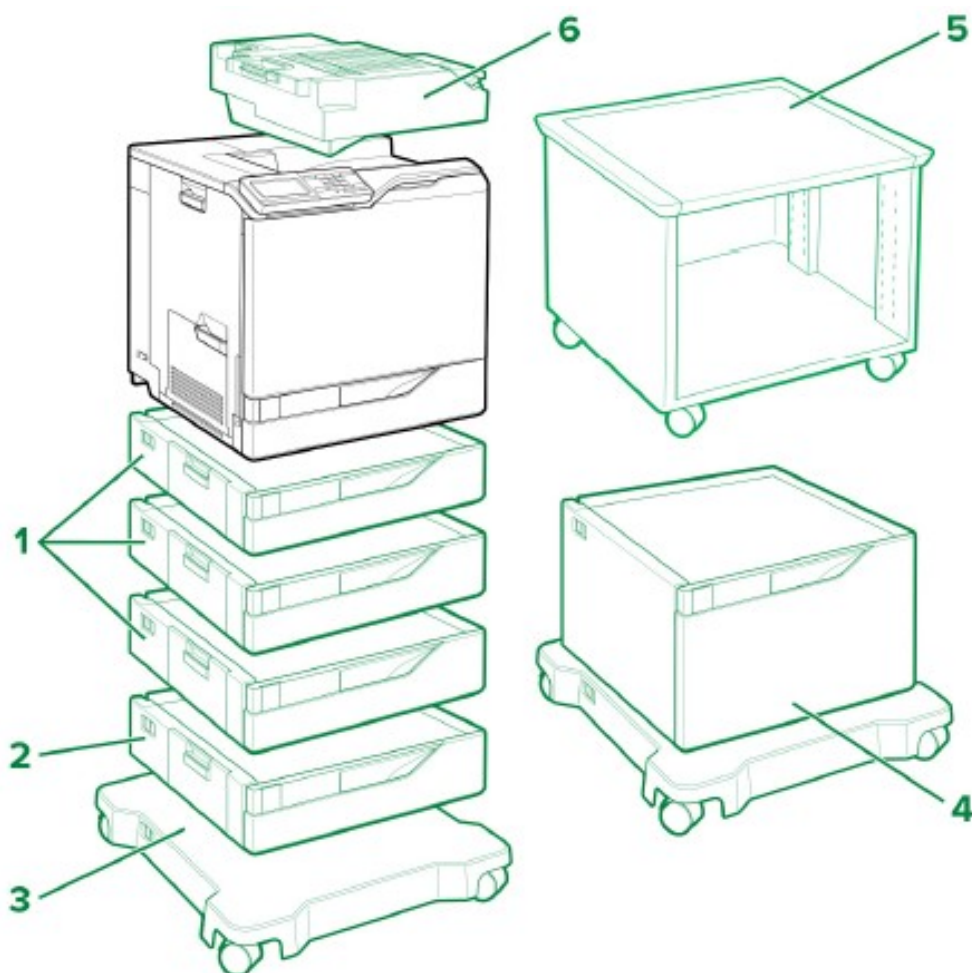
Flatbed Scanner 3



Index	Description
7	CCDM, flatbed board within the assembly

Lexmark CS82x, CX82x, CX860 series
Location

CS82x Series Paper Handling Devices

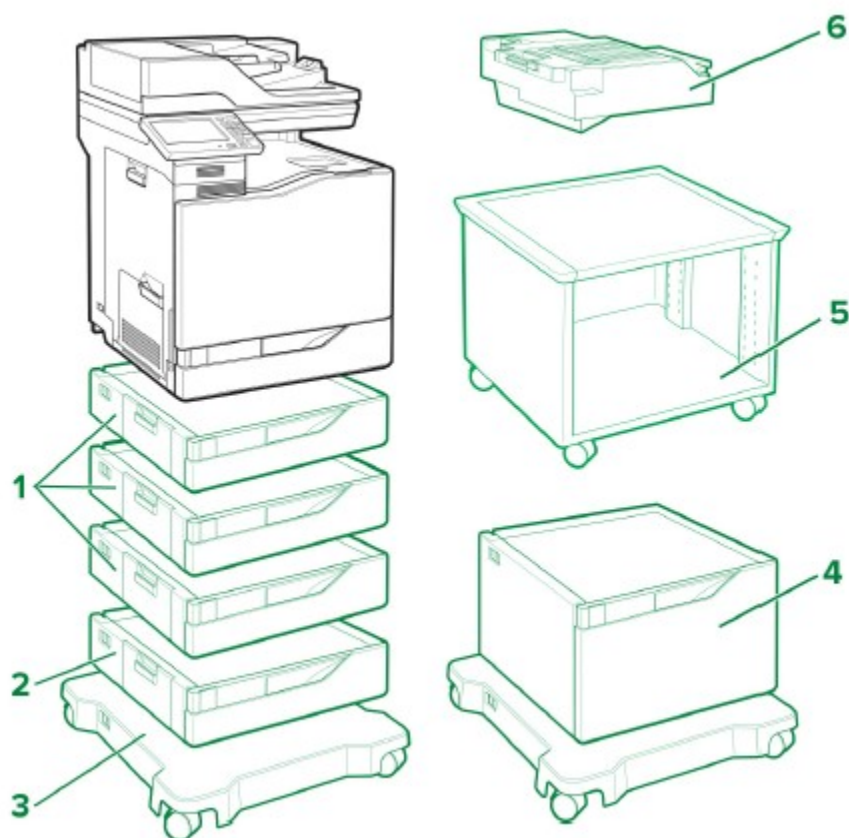


Index	Description
1	550-sheet tray
2	Envelope tray
3	Caster base*
4	2200-sheet tray
5	Adjustable print stand*
6	Staple finisher

Options marked with (*) are non-Electrical and electronic units

Lexmark CS82x, CX82x, CX860 series
Location

CX820 and CX827 Series Paper Handling Devices

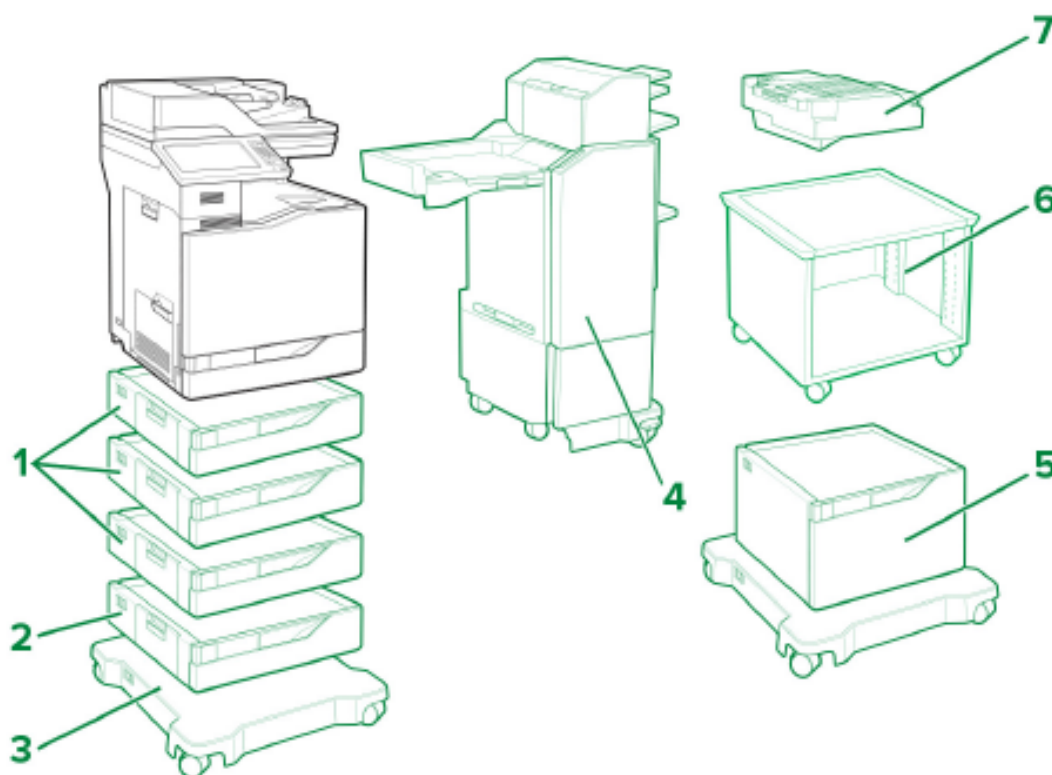


Index	Description
1	550-sheet tray
2	Envelope tray
3	Caster base*
4	2200-sheet tray
5	Adjustable print stand*
6	Staple finisher

Options marked with (*) are non-Electrical and electronic units

Lexmark CS82x, CX82x, CX860 series
Location

CX825 and CX860 Paper Handling Devices



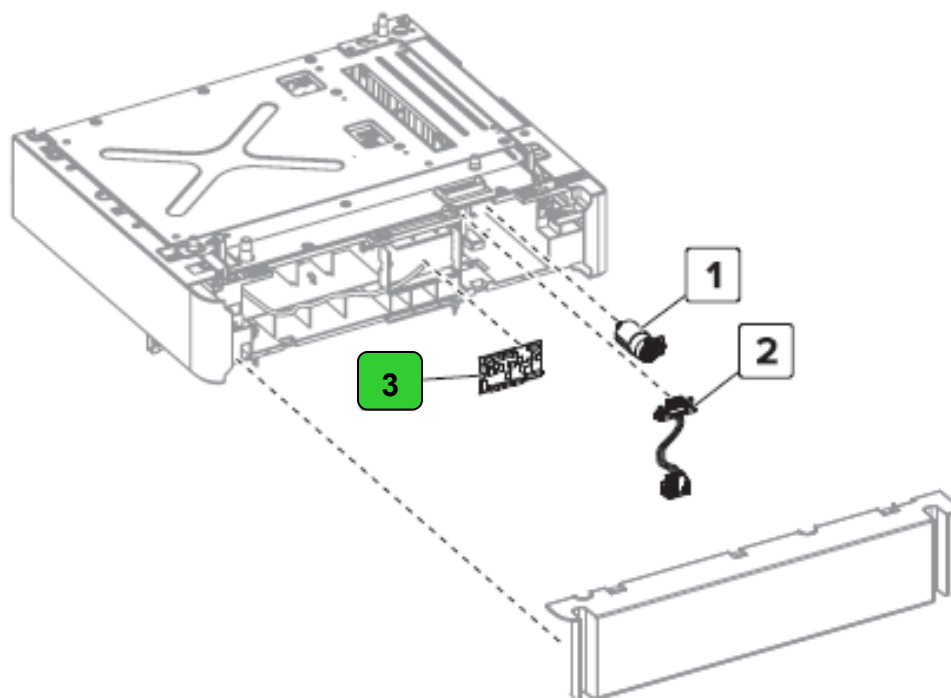
Index	Description
1	550-sheet tray
2	Envelope tray
3	Caster base*
4	Multiposition staple, hole punch finisher short/ tall
5	2200-sheet tray
6	Adjustable print stand*
7	Staple finisher

Options marked with (*) are non-Electrical and electronic units

Lexmark CS82x, CX82x, CX860 series
Location

Printed Circuit Boards >10cm² and Brominated Plastic Components

Paper Handling Options – 550 Sheet/ Envelope Tray Rear

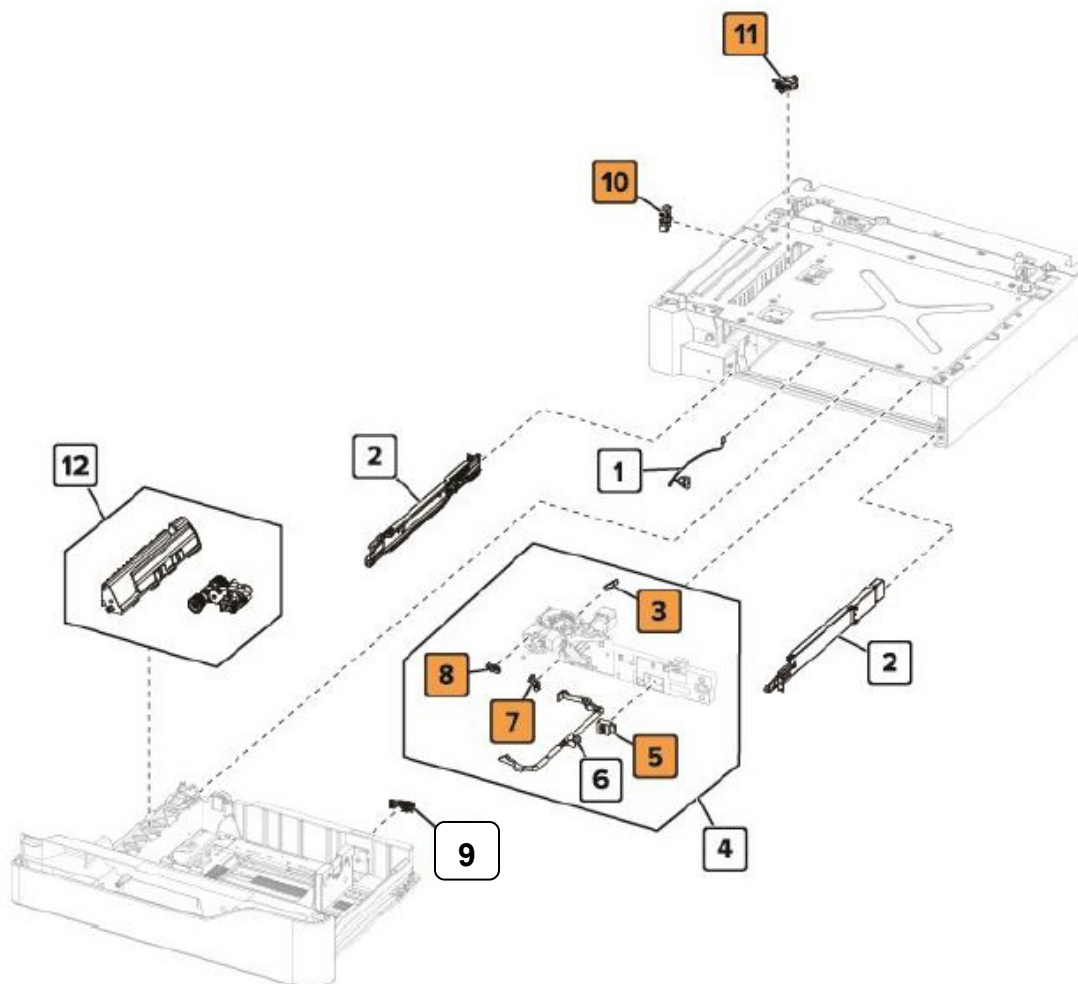


Index	Description
3	550-sheet / Envelop tray controller board

Lexmark CS82x, CX82x, CX860 series
Location

Printed Circuit Boards >10cm² and Brominated Plastic Components

Paper Handling Options –550 Sheet/ Envelope Tray Front

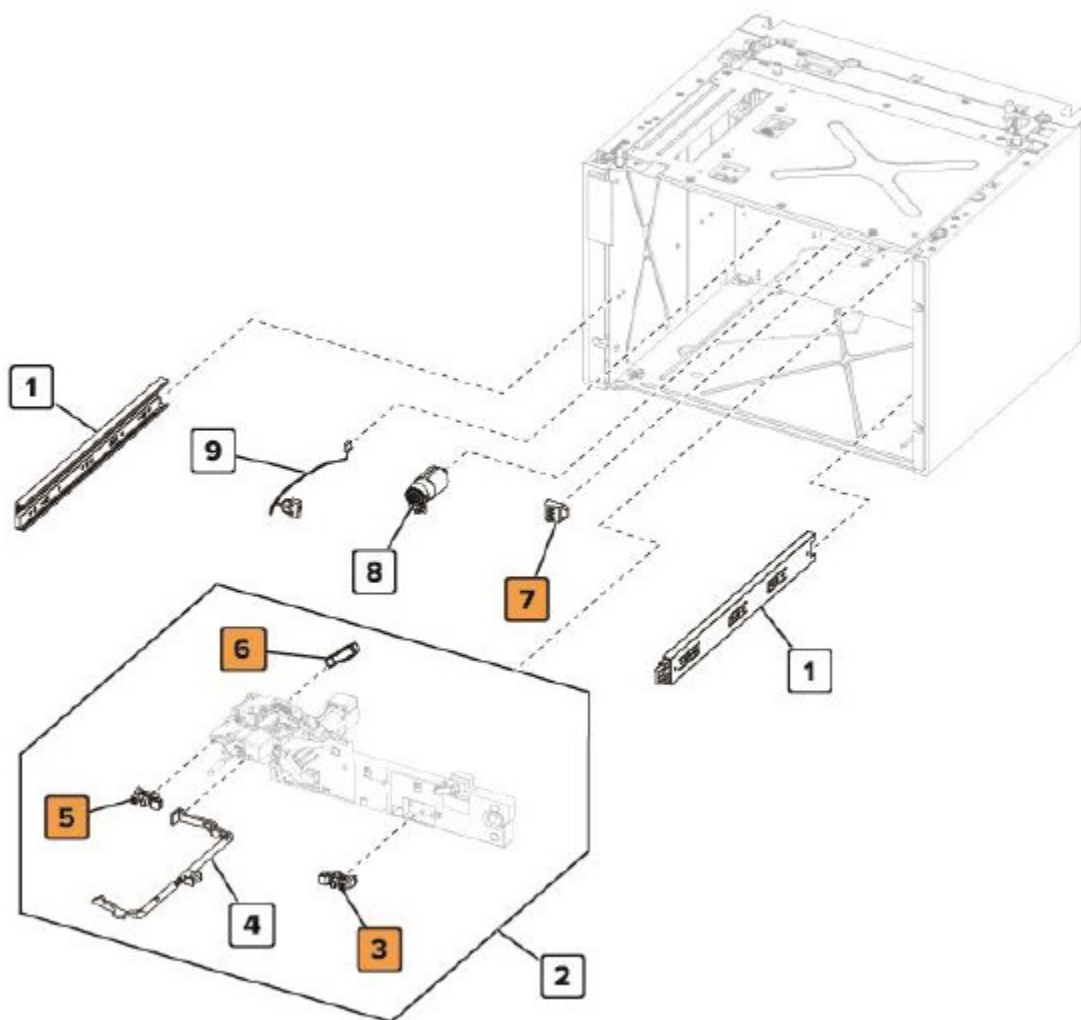


Index	Description
3	Sensor (550-sheet tray media out)
5	Sensor (550-sheet tray media size)
7	Sensor (550-sheet tray media low)
8	Sensor (550-sheet tray pick roller index)
10	Sensor (550-sheet tray jam door)

Lexmark CS82x, CX82x, CX860 series
Location

Printed Circuit Boards >10cm² and Brominated Plastic Components

Paper Handling Options – 2200 Sheet Tray Front

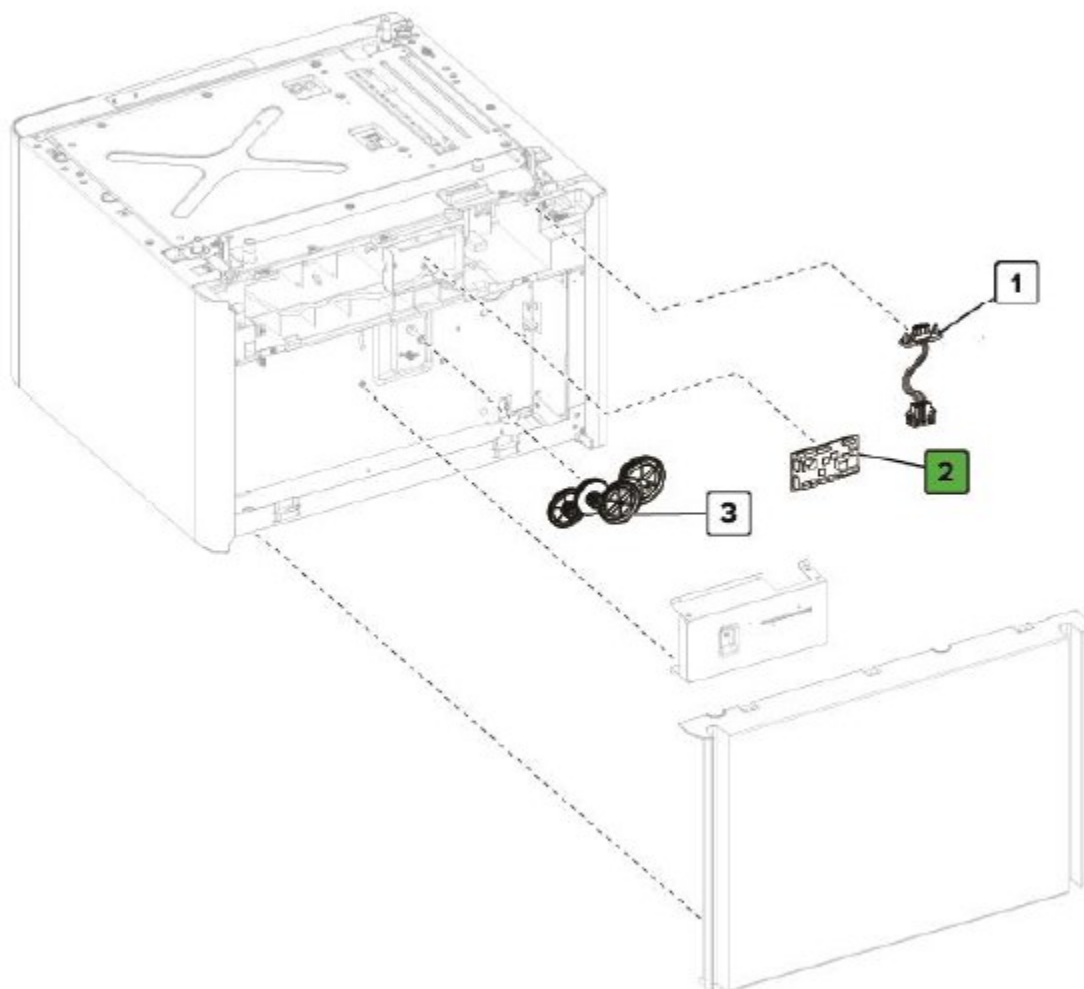


Index	Description
3	Sensor (2200-sheet tray media low)
5	Sensor (2200-sheet tray pick roller index)
6	Sensor (2200-sheet tray media out)
7	Sensor (2200-sheet tray media size)

Lexmark CS82x, CX82x, CX860 series
Location

Printed Circuit Boards >10cm² and Brominated Plastic Components

Paper Handling Options – 2200 Sheet Tray Rear

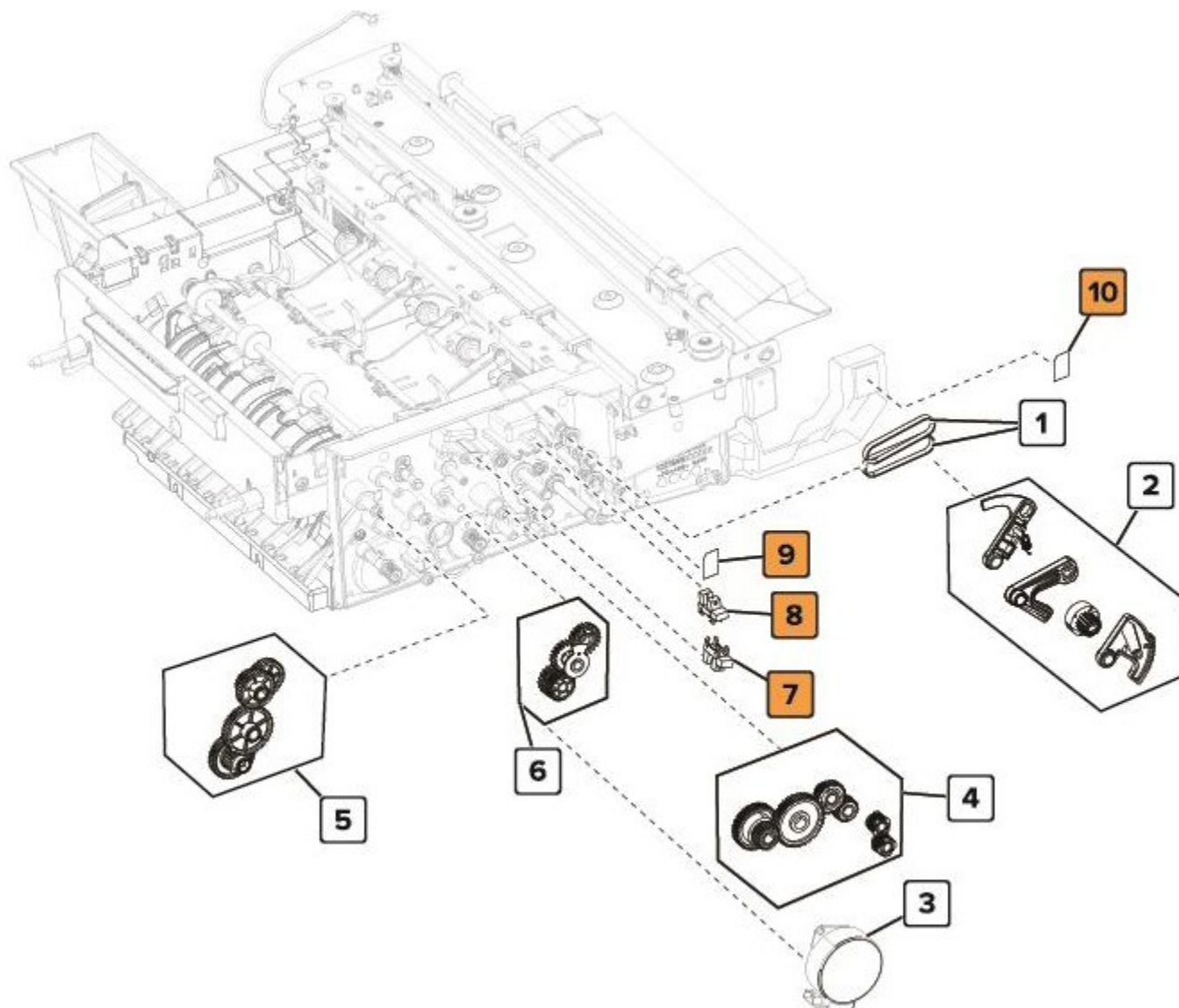


Index	Description
2	2200-sheet tray controller board

Lexmark CS82x, CX82x, CX860 series
Location

Printed Circuit Boards >10cm² and Brominated Plastic Components

Paper Handling Options – Staple Finisher Front

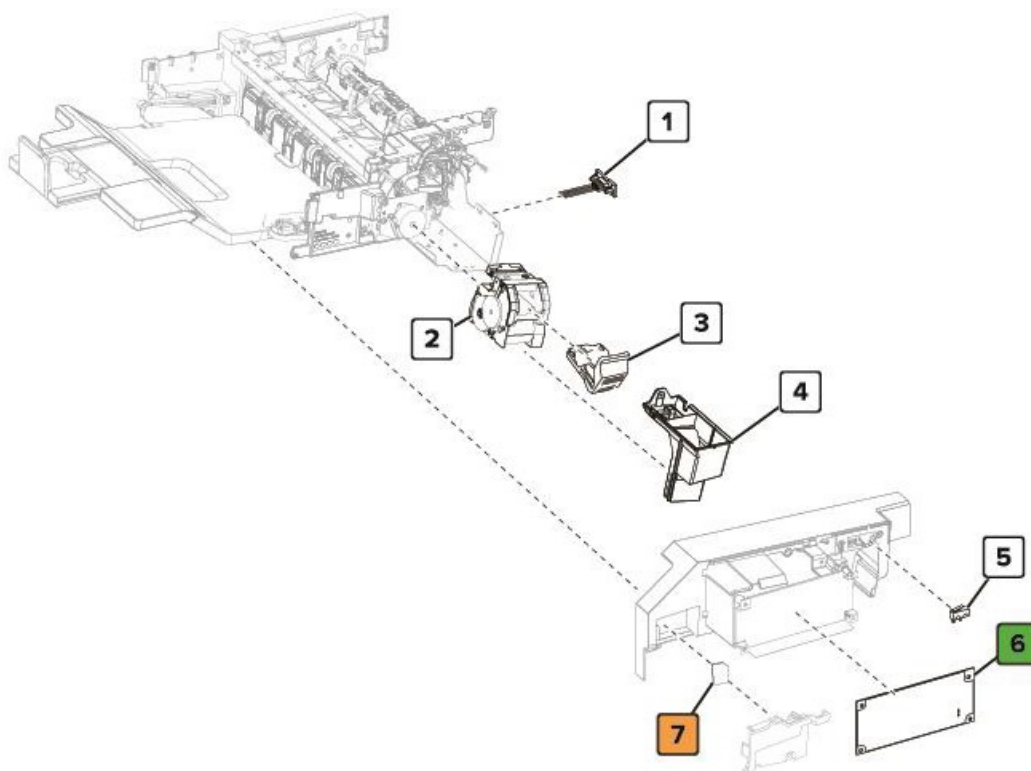


Index	Description
7	Sensor (staple finisher aligner paddle)
8	Sensor (staple finisher upper exit roller)
9	Sensor (staple finisher front lower bin full)
10	Sensor (staple finisher front upper bin full)

Lexmark CS82x, CX82x, CX860 series
Location

Printed Circuit Boards >10cm² and Brominated Plastic Components

Paper Handling Options – Staple Finisher Electrical

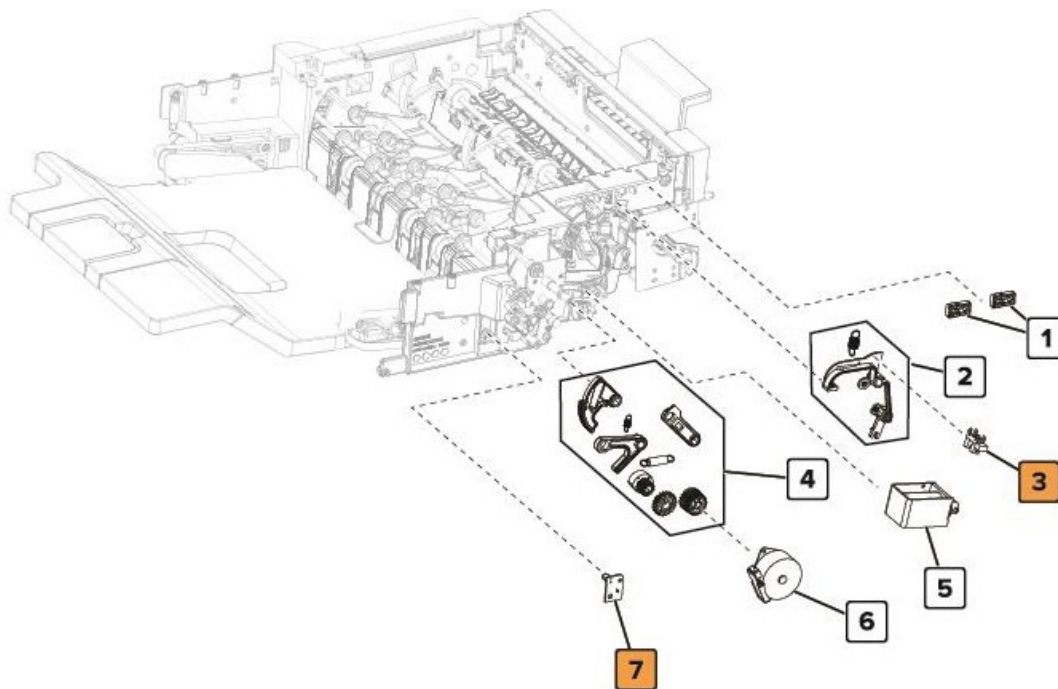


Index	Description
6	Staple finisher controller board
7	Sensor (staple finisher rear lower bin full)

Lexmark CS82x, CX82x, CX860 series
Location

Printed Circuit Boards >10cm² and Brominated Plastic Components

Paper Handling Options – Staple Finisher Rear

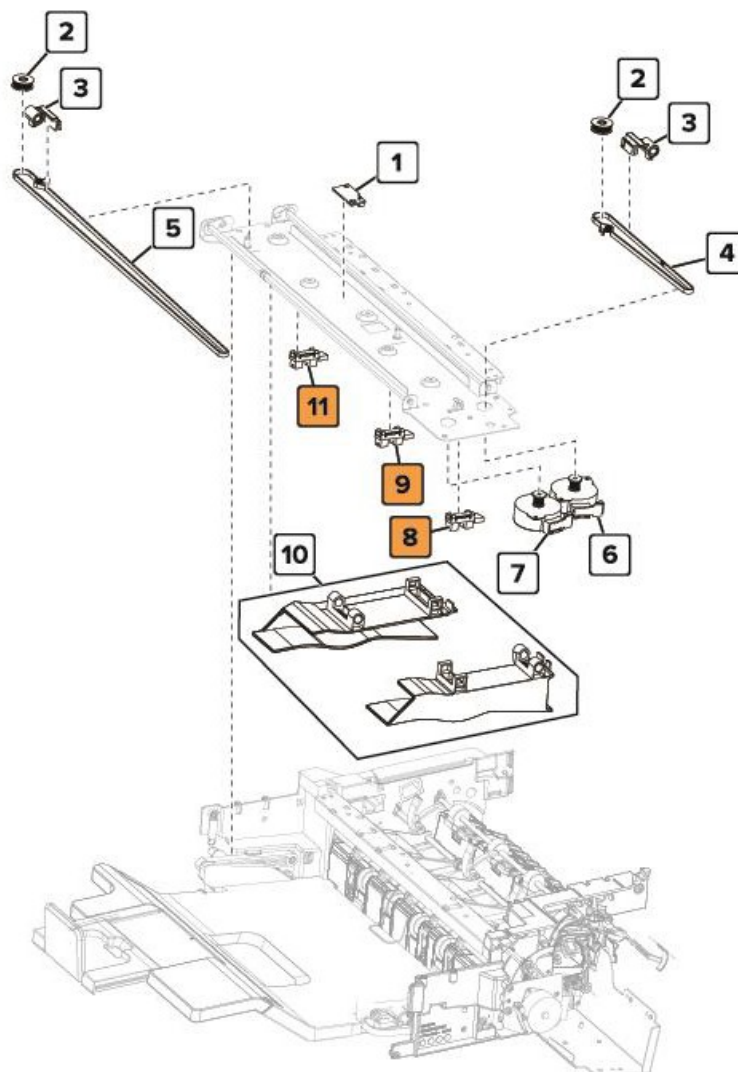


Index	Description
3	Sensor (staple finisher stack clamp)
7	Sensor (staple finisher rear upper bin full)

Lexmark CS82x, CX82x, CX860 series
Location

Printed Circuit Boards >10cm² and Brominated Plastic Components

Paper Handling Options – Staple Finisher Tamper

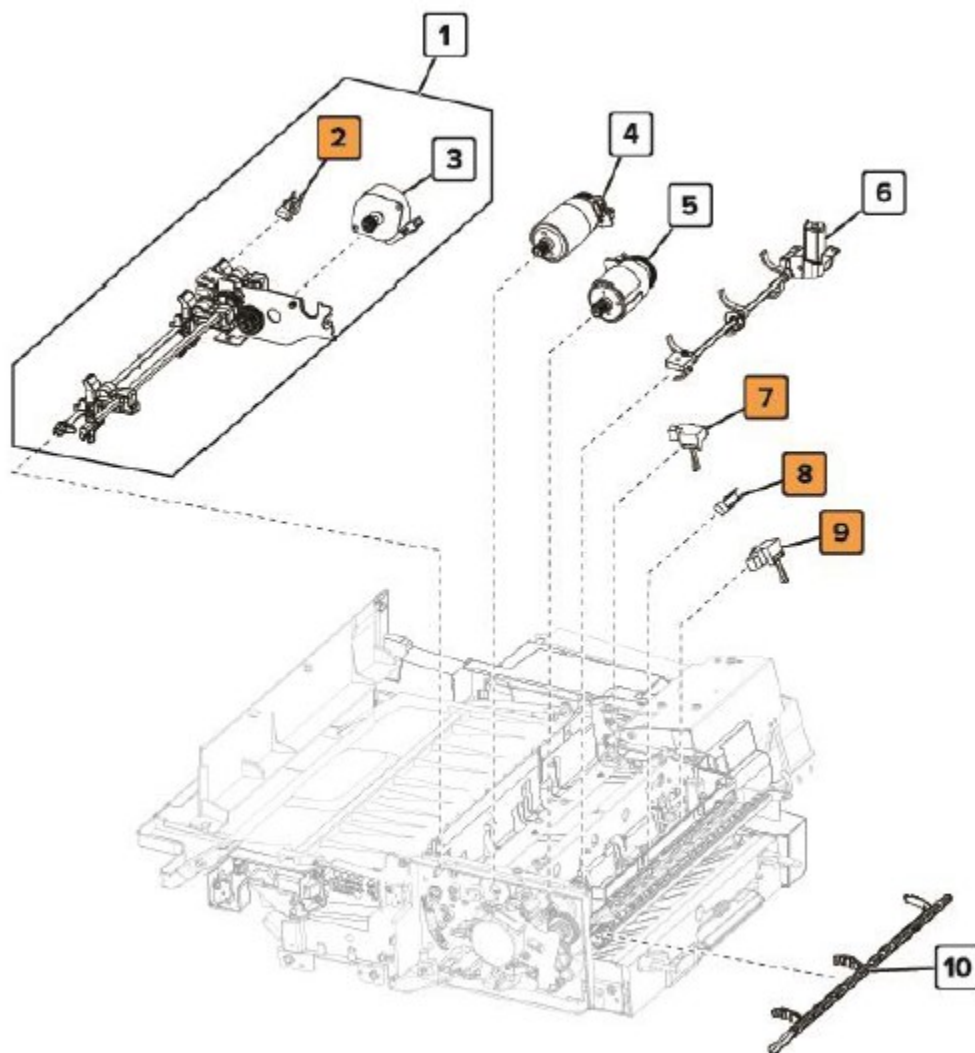


Index	Description
8	Sensor (staple finisher rear tamper home)
9	Sensor (staple finisher narrow media tamper)
11	Sensor (staple finisher front tamper home)

Lexmark CS82x, CX82x, CX860 series
Location

Printed Circuit Boards >10cm² and Brominated Plastic Components

Paper Handling Options – Staple Finisher Bottom

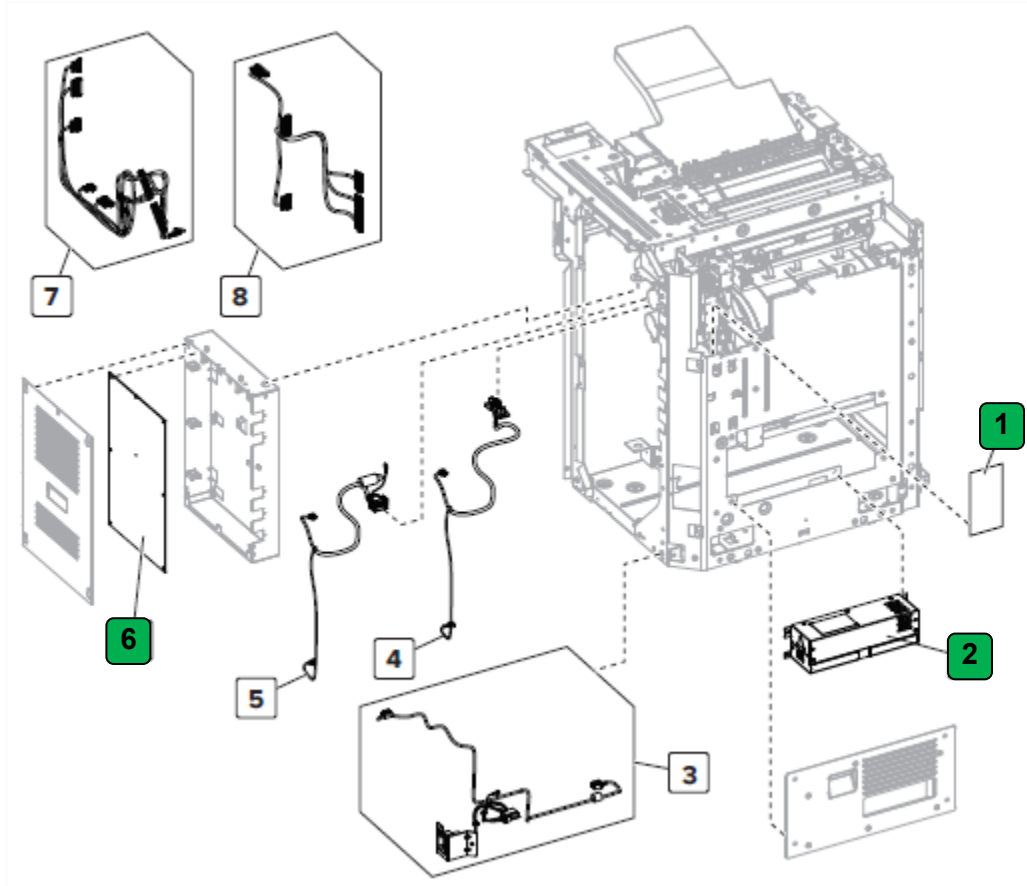


Index	Description
2	Sensor (staple finisher bin clamp)
7	Sensor (staple finisher staple unit paper present)
8	Sensor (staple finisher decurl)
9	Sensor (staple finisher transport)

Lexmark CS82x, CX82x, CX860 series
Location

Printed Circuit Boards >10cm² and Brominated Plastic Components

Paper Handling Options – MSHPF electronics

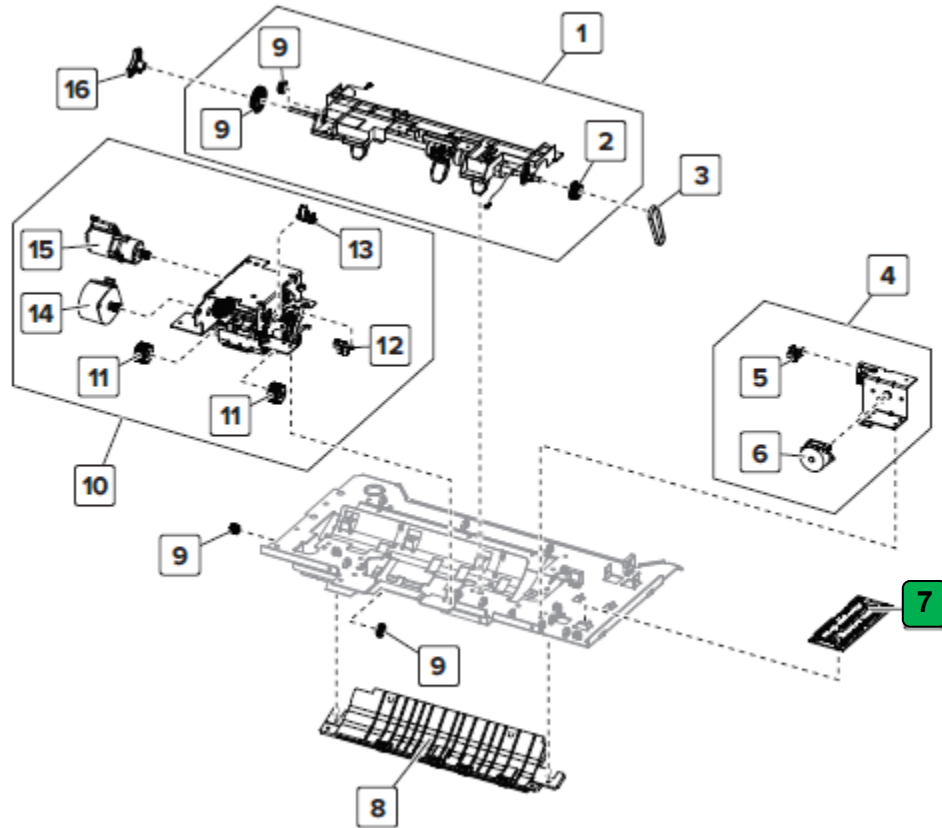


Index	Description
1	Mid-transport interface board
2	MSHPF power supply
6	MSHPF controller board

Lexmark CS82x, CX82x, CX860 series
Location

Printed Circuit Boards >10cm² and Brominated Plastic Components

Paper Handling Options – MSHPF compiler

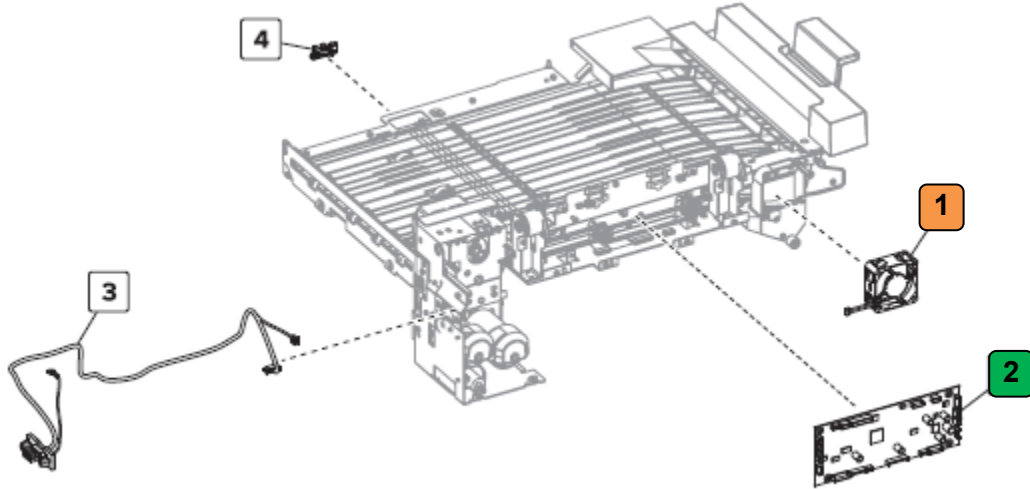


Index	Description
7	Compiler interface board

Lexmark CS82x, CX82x, CX860 series
Location

Printed Circuit Boards >10cm² and Brominated Plastic Components

Paper Handling Options – HPT electronics

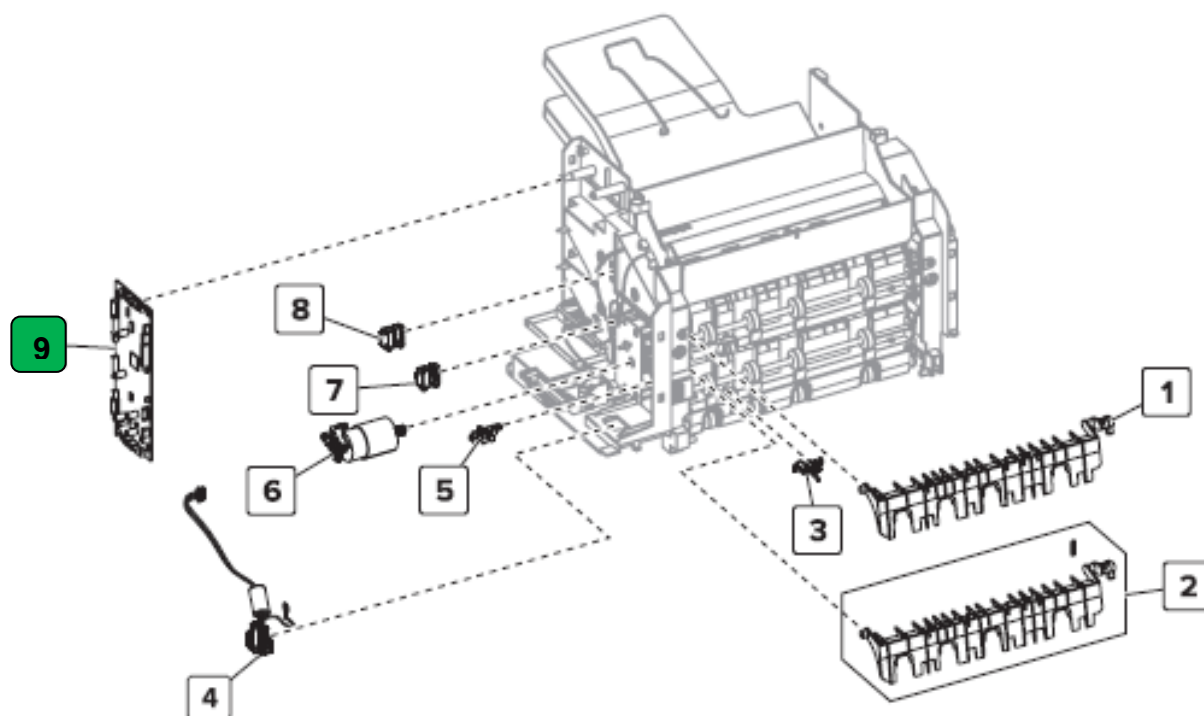


Index	Description
1	HPT fan
2	HPT controller board

Lexmark CS82x, CX82x, CX860 series
Location

Printed Circuit Boards >10cm² and Brominated Plastic Components

Paper Handling Options – Mailbox

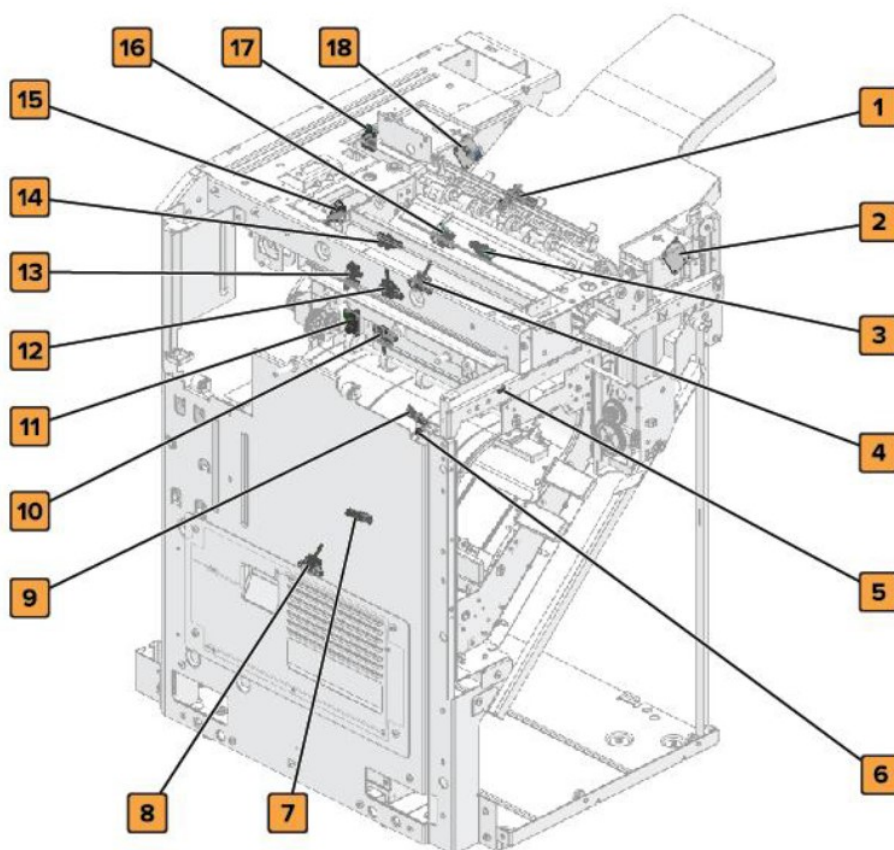


Index	Description
9	Mailbox controller board

Lexmark CS82x, CX82x, CX860 series
Location

Brominated Plastic Components

MSHPPF Sensors



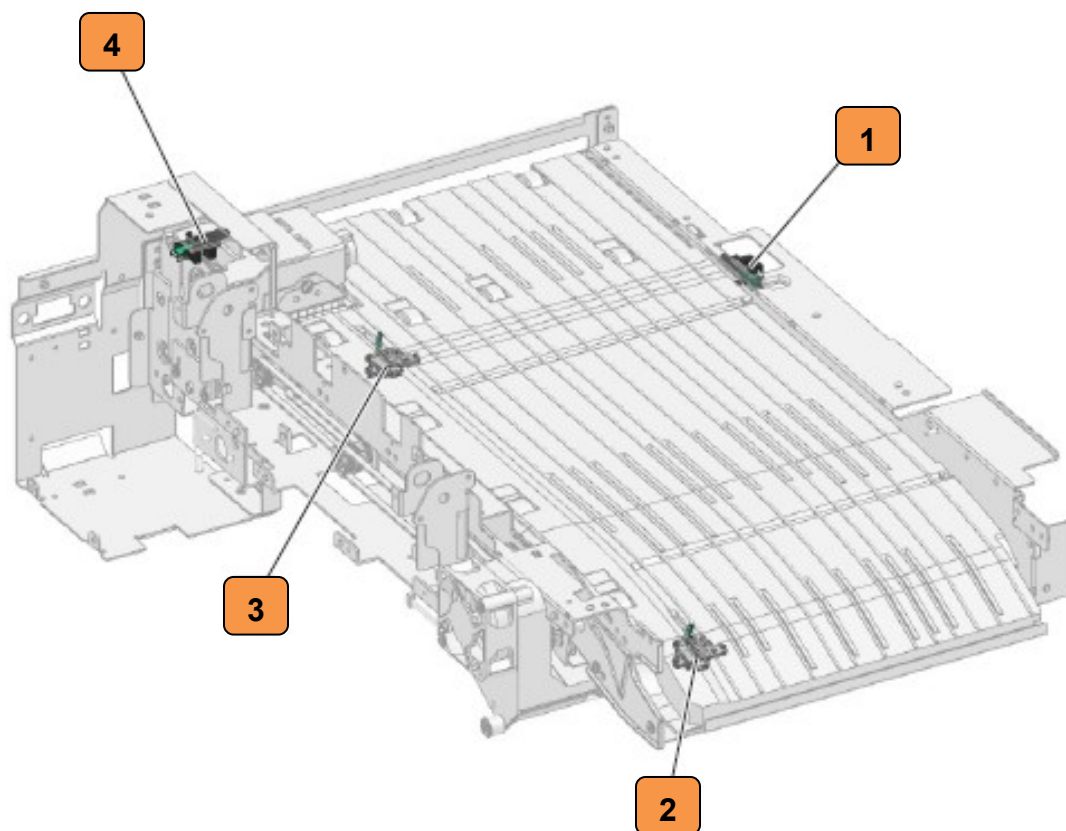
Index	Description
1	Sensor (standard bin paper present)
2	Sensor (standard bin stack upper limit), transmitter
3	Sensor (door N interlock)
4	Sensor (HPT hole punch unit)
5	Sensor (hole punch box full), transmitter
6	Sensor (hole punch box full), receiver
7	Sensor (staging inner transport 2)
8	Sensor (staging outer transport 2)
9	Sensor (staging inner transport 1)

Index	Description
10	Sensor (staging outer transport 1)
11	Sensor (hole punch box present)
12	Sensor (mid-transport)
13	Sensor (staging diverter)
14	Sensor (standard bin lower limit)
15	Sensor (mid-transport diverter)
16	Sensor (MSHPPF standard bin exit)
17	Sensor (offset roller)
18	Sensor (standard bin stack upper limit), receiver

Lexmark CS820, CX82x, CX860 series
Location

Brominated Plastic Components

HPT Sensors

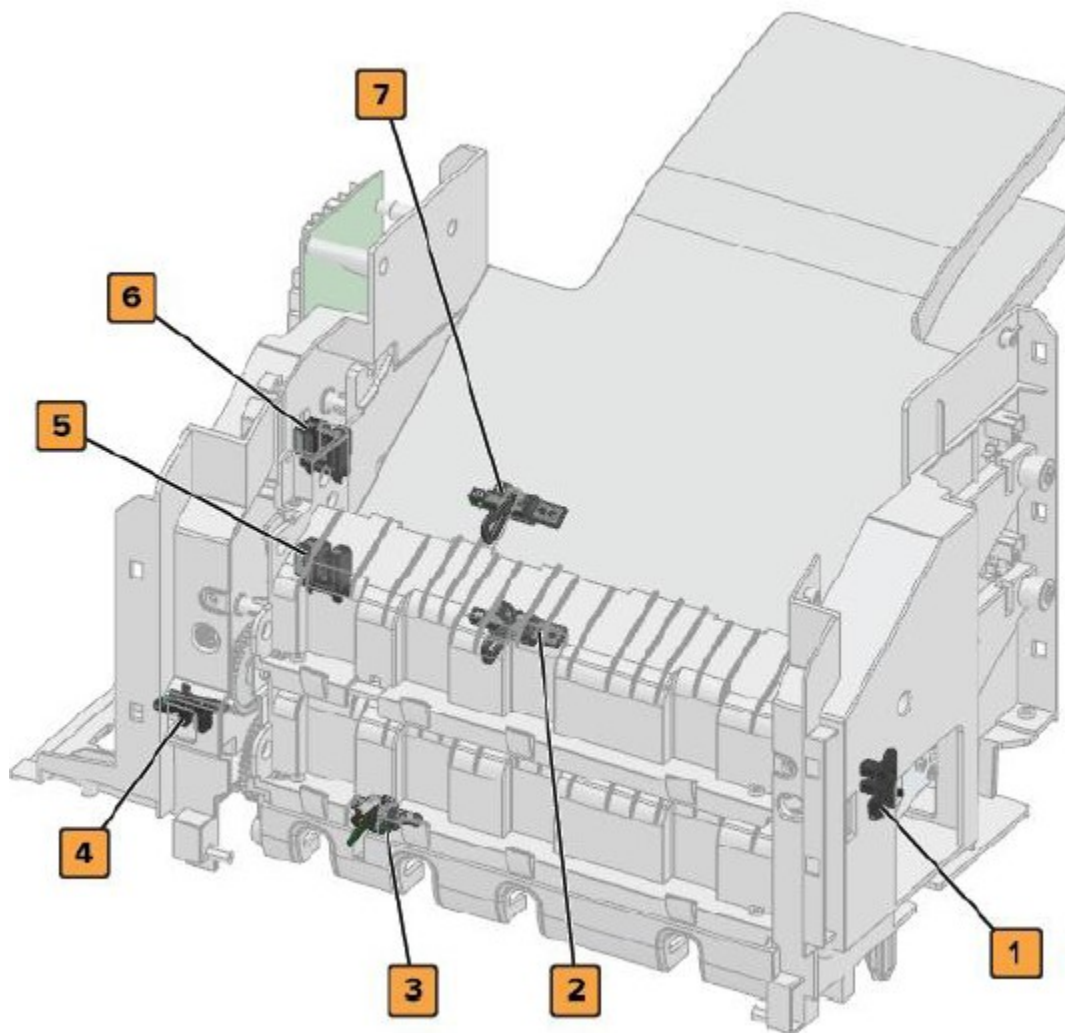


Index	Description
1	Sensor (HPT jam cover)
2	Sensor (HPT transport)
3	Sensor (HPU entrance)
4	Sensor (HPT hole punch unit)

Lexmark CS82x, CX82x, CX860 series
Location

Brominated Plastic Components

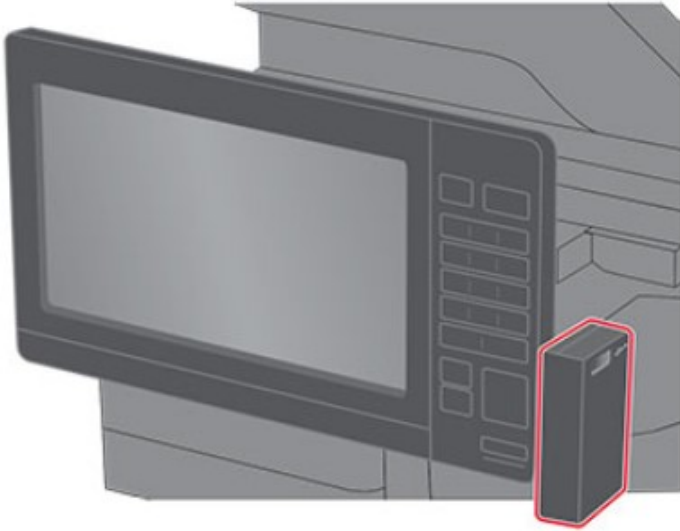
Mailbox Sensors



Index	Description
1	Sensor (mailbox diverter)
2	Sensor (mailbox bin 1 paper present)
3	Sensor (mailbox transport)
4	Sensor (mailbox jam door)
5	Sensor (mailbox bin 1 full)
6	Sensor (mailbox bin 2 full)
7	Sensor (mailbox bin 2 paper present)

Lexmark CS82x, CX82x, CX860 series
Location

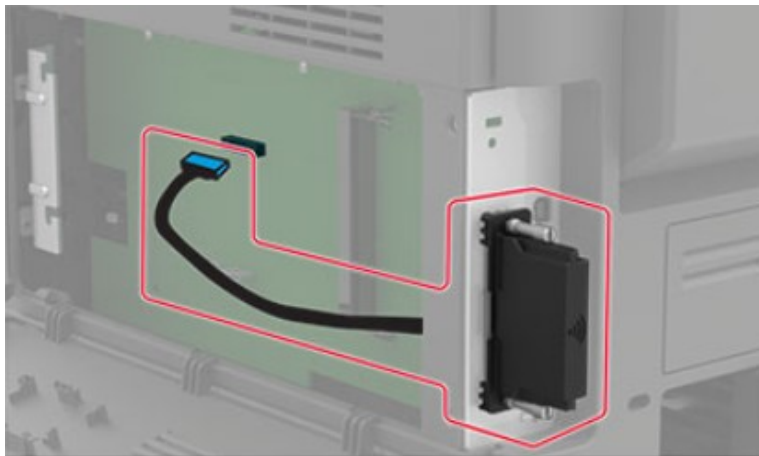
External Card Options



Authentication card readers¹



Keyboard¹



External Print Servers²

Note 1: Illustration shows actual options and their typical locations and mounting at the front side of the printer. However, this does not show the actual printer model.

Note 2: Illustration shows actual options and their typical locations and mounting at the rear side of the printer. However, this does not show the actual printer model.

Annex A – Printer components with Brominated Flame Retardants

Index	Description	Parts Marking	Quantity	Location
1	Sensor (duplex path 2)	N/A	1	Duplex
2	Sensor (duplex path 1)	N/A	1	
3	Sensor (MPF paper present)	N/A	1	Left Door
4	Sensor (MPF/pass-through)	N/A	1	
5	Deflector with sensor (MPF/pass-through)	N/A	1	
6	Sensor (pick roller index)	N/A	1	Feeder
7	Sensor (media out)	N/A	1	
8	Sensor (media size)	N/A	1	
9	Sensor (media low)	N/A	1	
10	Sensor (fuser temperature)	N/A	1	Fuser
11	21K1216 - Flag	PET-(GF+MD)40 FR(17)	1	
12	21K1245 - Guide Exit BUR Side	PET-(GF+MD)40 FR(17)	1	
13	21K1383 - Guide Exit Belt Side	PET-(GF+MD)40 FR(17)	1	
14	21K1246 - Entry Fuser	PET-(GF+MD)40 FR(17)	1	Electronics-Front
15	Sensor (waste toner bottle present)	N/A	1	
16	Sensor (door interlock)	N/A	1	
17	Sensor (input)	N/A	1	Registration
18	Sensor (deskew roller exit)	N/A	1	
19	Sensor (near narrow media)	N/A	1	
20	Sensor (narrow media)	N/A	1	
21	Sensor (deskew roller entry)	N/A	1	Motors
22	Sensor (waste toner full)	N/A	1	
23	Sensor (auto alignment)	N/A	2	Transfer Front
24	Sensor (TPS)	N/A	1	
25	Main fan	N/A	1	Fans
26	Controller board fan	N/A	1	
27	Printhead fan	N/A	1	
28	HVPS fan	N/A	1	

Annex B – ADF and Scanner components with Brominated Flame Retardants

Index	Description	Parts Marking	Quantity	Location
1	Sensor (ADF multifeed receiver)	N/A	1	ADF 4
2	Sensor (ADF deskew)	N/A	1	ADF 5
3	Sensor (ADF multifeed transmitter)	N/A	1	ADF 6
4	Sensor (ADF top door interlock)	N/A	1	
5	Sensor (ADF bottom door interlock)	N/A	1	
6	Sensor (ADF 2nd scan)	N/A	1	
7	Sensor (ADF 1st scan)	N/A	1	
8	Sensor (ADF pick)	N/A	1	
9	Sensor (ADF media exit)	N/A	1	
10	Sensor (ADF closed)	N/A	1	

Annex C – Paper handling components with Brominated Flame Retardants (Page 1 of 2)

Index	Description	Parts Marking	Quantity	Location
1	Sensor (550-sheet tray media out)	N/A	1	550 Sheet/ Envelope Tray Front
2	Sensor (550-sheet tray media size)	N/A	1	
3	Sensor (550-sheet tray media low)	N/A	1	
4	Sensor (550-sheet tray pick roller index)	N/A	1	
5	Sensor (550-sheet tray jam door)	N/A	1	
6	Sensor (2200-sheet tray media low)	N/A	1	2200 Sheet Tray Front
7	Sensor (2200-sheet tray pick roller index)	N/A	1	
8	Sensor (2200-sheet tray media out)	N/A	1	
9	Sensor (2200-sheet tray media size)	N/A	1	
10	Sensor (staple finisher aligner paddle)	N/A	1	Staple Finisher Front

Annex C – Paper handling components with Brominated Flame Retardants (Page 2 of 2)

Index	Description	Parts Marking	Quantity	Location
11	Sensor (staple finisher upper exit roller)	N/A	1	Staple Finisher Front
12	Sensor (staple finisher front lower bin full)	N/A	1	
13	Sensor (staple finisher front upper bin full)	N/A	1	
14	Sensor (staple finisher rear lower bin full)	N/A	1	Staple Finisher Electrical
15	Sensor (staple finisher stack clamp)	N/A	1	Staple Finisher Rear
16	Sensor (staple finisher rear upper bin full)	N/A	1	
17	Sensor (staple finisher rear tamper home)	N/A	1	Staple Finisher Tamper
18	Sensor (staple finisher narrow media tamper)	N/A	1	
19	Sensor (staple finisher front tamper home)	N/A	1	
20	Sensor (staple finisher bin clamp)	N/A	1	Staple Finisher Bottom
21	Sensor (staple finisher staple unit paper present)	N/A	1	
22	Sensor (staple finisher decurl)	N/A	1	
23	Sensor (staple finisher transport)	N/A	1	
24	MSHPF Sensors	N/A	18	MSHPF
25	HPT fan	N/A	1	HPT electronics
26	HPT Sensors	N/A	4	HPT
27	Mailbox Sensors	N/A	7	Mailbox

Annex D – Printer and Scanner Printed Circuit Boards >10cm²

Index	Description	Quantity	Location	CS82x	CX820/ CX827/ XC6152	CX825/ CX860/ XC8155/ XC8160
1	4.3in Control panel board	1	Op panel	X		
	7in Control panel board	1			X	
	10.1in Control panel board	1				X
2	Toner cartridge memory card	4	Toner cartridge	X	X	X
3	Fuser board	1	Fuser	X	X	X
4	Main HVPS	1	Electronics-Front	X	X	X
5	LVPS	1	Electronics-Rear	X	X	X
6	Charge roller HVPS	1		X	X	X
7	Controller board	1		X	X	X
8	Fuser/transfer belt motor gearbox	2	Motors	X	X	X
9	EP, developer, toner add gearbox	4		X	X	X
10	Laser printhead board	1	Printhead	X	X	X
11	Smart chip interface board	1	Toner supply	X	X	X
12	CCDM, ADF board	1	ADF 4		X	X
13	ADF controller board	1			X	X
14	Flatbed scanner board	1	Flatbed scanner 2		X	X
15	CCDM, flatbed board	1	Flatbed scanner 3		X	X

Annex E – Options Printed Circuit Boards >10cm²

Index	Description	Quantity	Location	CS82x	CX820/ CX827/ XC6152	CX825/ CX860/ XC8155/ XC8160
16	550-sheet tray controller board	1	550 Sheet/ Envelope Tray Rear	X	X	X
17	Envelope tray	1	550 Sheet/ Envelope Tray Rear	X	X	X
18	2200-sheet tray controller board	1	2200 Sheet Tray Rear	X	X	X
19	Staple finisher controller board	1	Staple Finisher Electrical	X	X	X
20	Mid-transport interface board	1	MSHPP electronics			X
21	MSHPP power supply	1				X
22	MSHPP controller board	1				X
23	Compiler interface board	1	MSHPP compiler			X
24	HPT controller board	1	HPT electronics			X
23	Mailbox controller board	1	Mailbox			X
24	Fax card (connected to Controller board)	1	Electronics-Rear		X	X
25	HDD card (connected to Controller board)	1		X	X	X

Annex F – Electrical and Electronic (EE) Customer Replaceable Paper Handling Devices

Index	PN	Description	Locations	CS82x	CX820/ CX827/ XC6152	CX825/ CX860/ XC8155/ XC8160
1	21K0567	550-Sheet Tray	Paper handling options	X	X	X
2	21K0787	Envelope Tray		X	X	X
3	21K0237	2200-Sheet Tray		X	X	X
4	42K2000	CS/CX820 Staple Finisher		X	X	
5	42K2300	CX825/CX860 Staple Finisher		X	X	
6	42K1268	Multiposition Staple, Hole Punch Finisher				X
7	42K1598	Multiposition Staple, Hole Punch Finisher Tall				X

Annex G – Electrical and Electronic (EE) Customer Replaceable Internal/ External Card Options

Index	PN	Description	Locations	CS82x	CX820/ CX827/ XC6152	CX825/ CX860/ XC8155/ XC8160
1	57X9022 57X9801	Memory options	Attached to Controller board	X	X	X
2	57X0085	Security card		X	X	X
3	21K0127 21K0128 21K0129	Firmware cards (DLEs)		X	X	X
4	57X9810 57X9812 57X9814 57X9815	Font cards		X	X	X
5	14F0100 14F0000	Interface cards		X	X	X
6	57X0300 57X0301	Authentication card readers	External options	X	X	X
7	27X0309	Wireless		X	X	X
8	57X7020 57X7021 57X7022 57X7023 57X7024	Keyboard			X	X
9	41X0245	Transfer Belt	Transfer Belt	X	X	X
10	41X0247	Fuser	Fuser	X	X	X
11	41X0929	Maintenance kit (Transfer belt and Fuser)	Transfer Belt, Fuser	X	X	X