

## Disassembly of Waste Electrical and Electronic Equipment (WEEE) Manual

EU Waste Electronic and Electrical Equipment Directive require producers to provide information of the different electronic and electrical materials and components found in their products at its end-of-life, and disassembly references to treatment and recycling facilities.

The disassembly information for this product has been prepared for use by a recognized treatment or recycling facility and is not intended to be used by others.

1. Product information
2. Materials and components list for selective treatment
3. Disassembly tools
4. Disassembly references

The following information is intended only for the use of treatment and recycling facilities.

### 1. Product information

**Model name(s)**—Indicate all model name(s) within the product family

#### Model name

##### Lexmark MS72x and MS82x series –

Lexmark B2865, Lexmark M52xx, Lexmark MS725, Lexmark MS82x

##### Lexmark MX72x and MX82x series –

Lexmark MX72x, Lexmark MB2770, Lexmark MX82x, Lexmark XM53xx, Lexmark XM73xx

*\* Add rows as needed*

### 2. Materials and components list for selective treatment

| Items   | Quantity | Notes   |
|---|----------|---|
| Polychlorinated biphenyls (PCB) containing capacitors                 | 0        | N/A   |
| Mercury containing components, such as switches or backlighting lamps | 0        | N/A   |
| Batteries   | 1        | Lithium Manganese Dioxide coin cell located on the <a href="#">Controller board</a> |

| Items  | Quantity | Notes   |
|--|----------|---|
| <b>Printed circuit boards greater than 10 cm<sup>2</sup></b>   | multiple | 6 – Lexmark MS72x and MS82x series<br>10 – Lexmark MX72x and MX82x series<br><br>Options: 1 – Fax, 1 – HDD<br><br>Paper handling options: 1 – 550 Tray, 1 – 2100 Tray, 1 – Output Expander, 1 – High Capacity Output Expander, 1 – Staple finisher, 1 – Mailbox, 1- Staple, hole punch finisher, 1 – Offset stacker<br><br>See details in <a href="#">Annex D and E</a> |
| <b>Toner cartridges, liquid and pasty, as well as colour toner</b>   | 2        | 1 – Toner cartridge, 1 – Imaging unit   |
| <b>Plastic containing brominated flame retardants</b>  | multiple | 19 – Lexmark MS72x and MS82x series<br>31 – Lexmark MX72x and MX82x series<br><br>Paper handling options: 5 – 250 Tray, 5 – 550 Tray, 3 – 2100 Tray, 4 – Output Expander, 3 – High Capacity Output Expander, 12 – Staple finisher, 4 – Mailbox, 15 – Staple, hole punch finisher, 12 – Offset stacker<br><br>See details in <a href="#">Annex A, B and C</a>            |
| <b>Asbestos waste and components which contain asbestos</b>  | 0        | N/A   |
| <b>Cathode ray tubes</b>   | 0        | N/A   |
| <b>Chlorofluorocarbons (CFC), Hydrochlorofluorocarbons (HCFC) or Hydrofluorocarbons (HFC), Hydrocarbons (HC)</b>   | 0        | N/A   |
| <b>Gas discharge lamps</b>   | 0        | N/A   |
| <b>Liquid Crystal Display (LCD) greater than 100 cm<sup>2</sup> and those back-lighted with Gas discharge lamps</b>  | 0        | N/A   |
| <b>External electrical cables</b>  | 1        | Power cord located on the rear of the printer   |
| <b>Components containing refractory fibres</b>   | 0        | N/A   |
| <b>Components containing radioactive substances</b>  | 0        | N/A   |
| <b>Electrolyte capacitors containing substances of concern (<i>capacitors with height &gt; 25 mm, diameter &gt; 25 mm or proportionately similar volume</i>)</b> | 1        | <a href="#">Low voltage power supply (LVPS)</a>   |
| <b>Electrical and Electronic (EE) Customer Replaceable Paper handling devices</b>  | multiple | 10 – Lexmark MS72x and MS82x series<br>5 – Lexmark MX72x series<br>8 – Lexmark MX82x series<br><br>See details in <a href="#">Annex F</a>   |
| <b>Electrical and Electronic (EE) Customer Replaceable Internal/External Card options</b>  | multiple | 6 – Lexmark MS72x and MS82x series<br>7 – Lexmark MX72x series<br>8 – Lexmark MX82x series<br><br>See details in <a href="#">Annex G</a>  |

### 3. Disassembly tools

| Item   |
|--|
| #2 Phillips screwdriver, magnetic            |
| Wire cutter                                  |
| E-clip puller or small flat-head screwdriver |
| T8 screwdriver                               |
| T10 screwdriver                              |

### 4. Disassembly references

#### 4.1. Removal procedure(s)

WEEE materials and components removal procedures are available upon request.

Contact: [recycling@lexmark.com](mailto:recycling@lexmark.com)

#### 4.2. Graphical illustration of material's and component's location



*LCD >100 cm<sup>2</sup> are identified with cyan-filled boxes*



*PCBs >10 cm<sup>2</sup> are identified with green-filled boxes*



*Printer components containing Brominated flame retardants are identified with orange-filled boxes*

**MS72x/ MS82x and MX72x/ MX82x Series  
Location**

**Toner cartridge and Imaging Unit**



**MS Series**

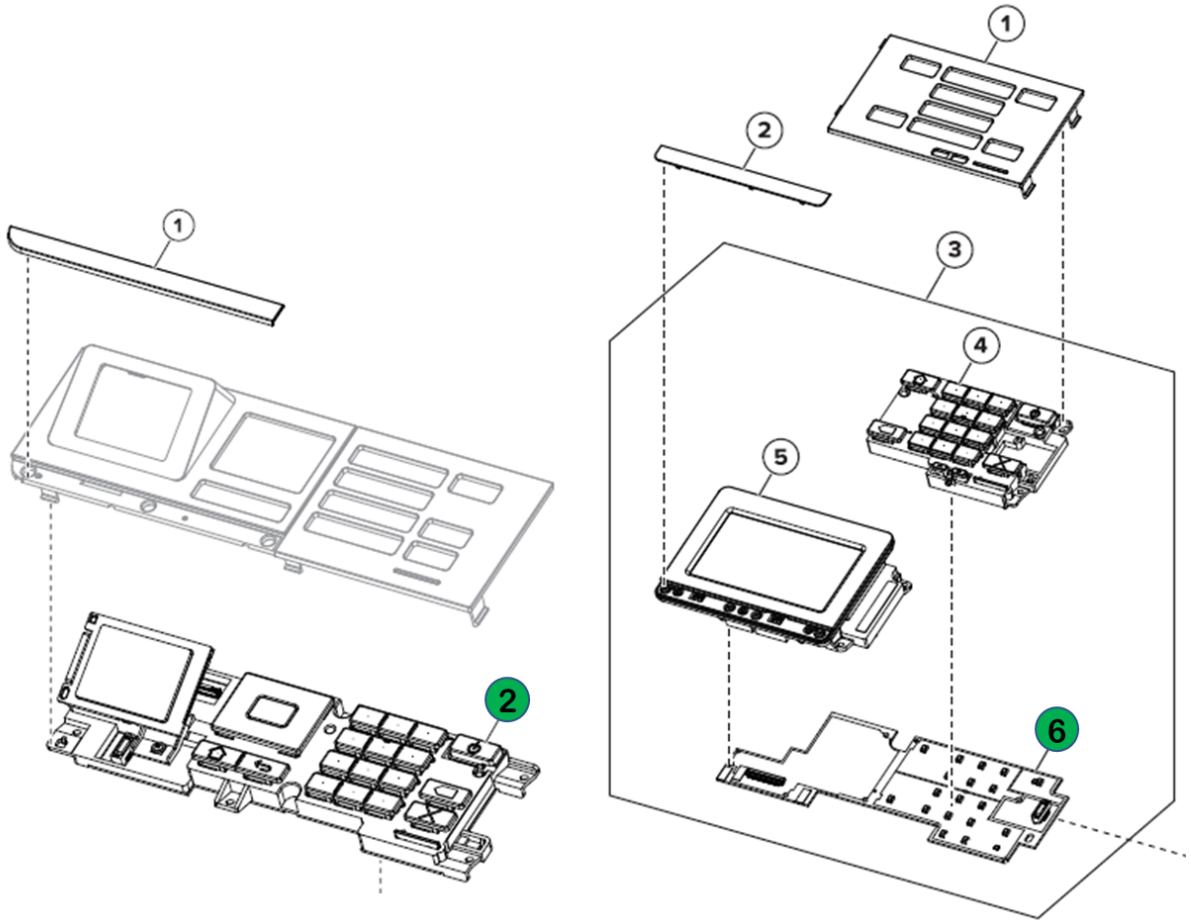


**MX Series**

**MS72x/ MS82x Series  
Location**

**Printed Circuit Boards >10cm<sup>2</sup>**

**MS Series Control Panel**



**2.4in Control panel**

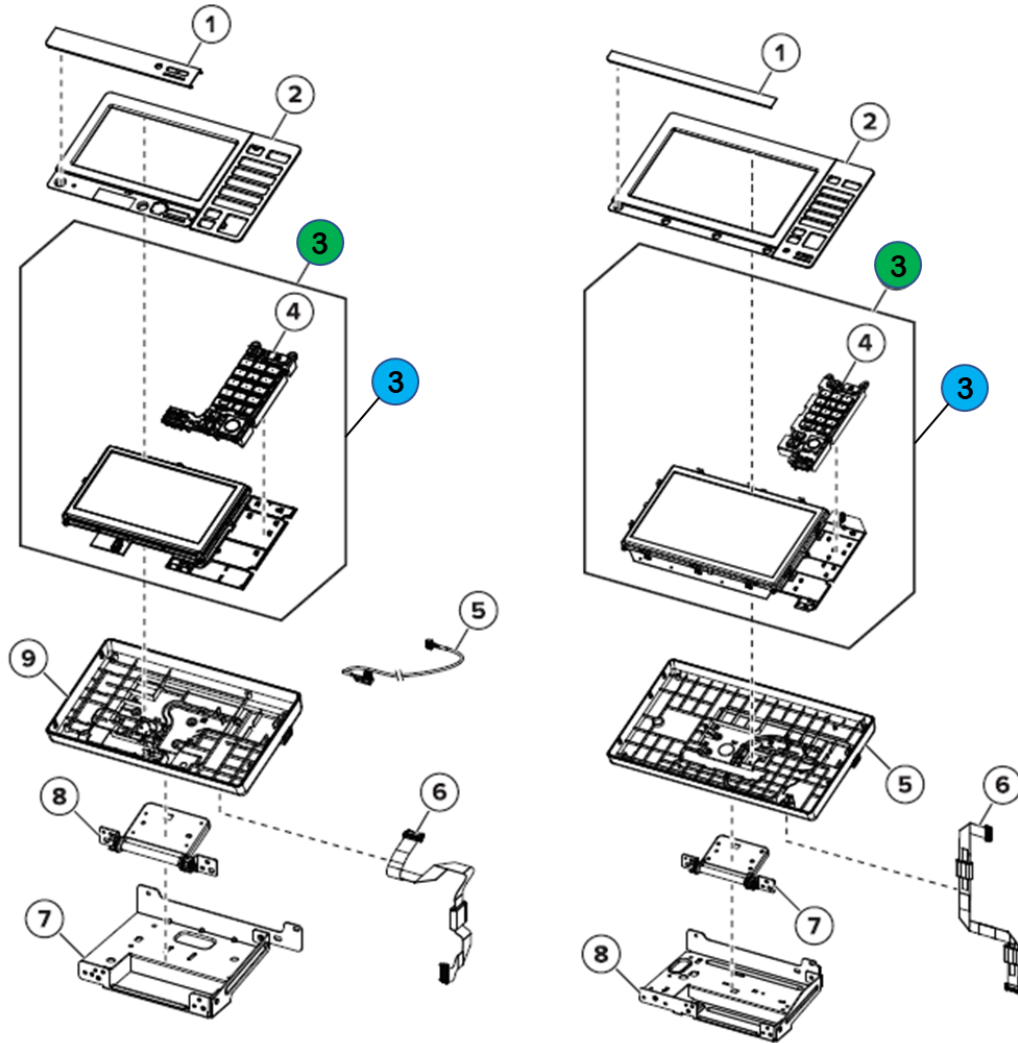
**4.3in Control panel**

| Index | Description                                   |
|-------|---|
| 2     | 2.4in Control panel board within the assembly |
| 6     | 4.3in Control panel board within the assembly |

**MX72x/ MX82x Series  
Location**

**Printed Circuit Boards >10cm<sup>2</sup> and LCD > 100cm<sup>2</sup>**

**MX Series Control Panel**



**7in Control panel**

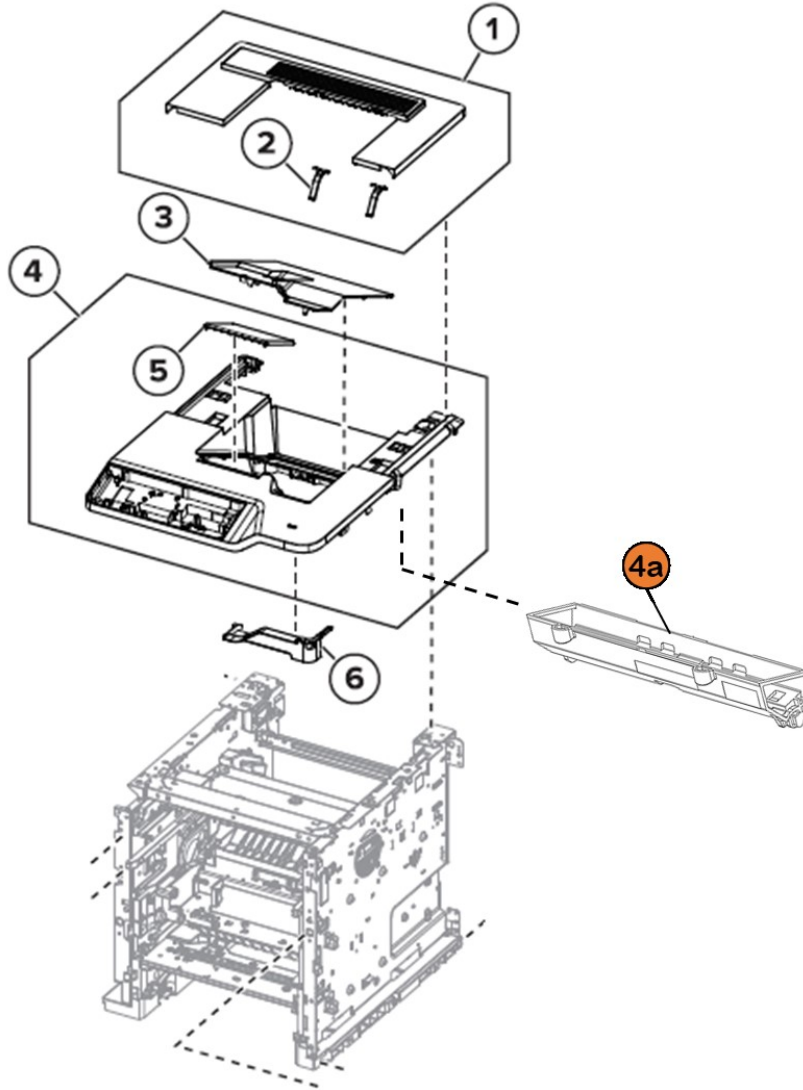
**10.1in Control panel**

| Index | Description                                    |
|-------|--|
| 3     | 7in Control panel board within the assembly    |
| 3     | 7in Control panel LCD within the assembly      |
| 3     | 10.1in Control panel board within the assembly |
| 3     | 10.1in Control panel LCD within the assembly   |

MS72x/ MS82x Series  
Location

Printed Circuit Boards >10cm<sup>2</sup> and LCD > 100cm<sup>2</sup>

Covers

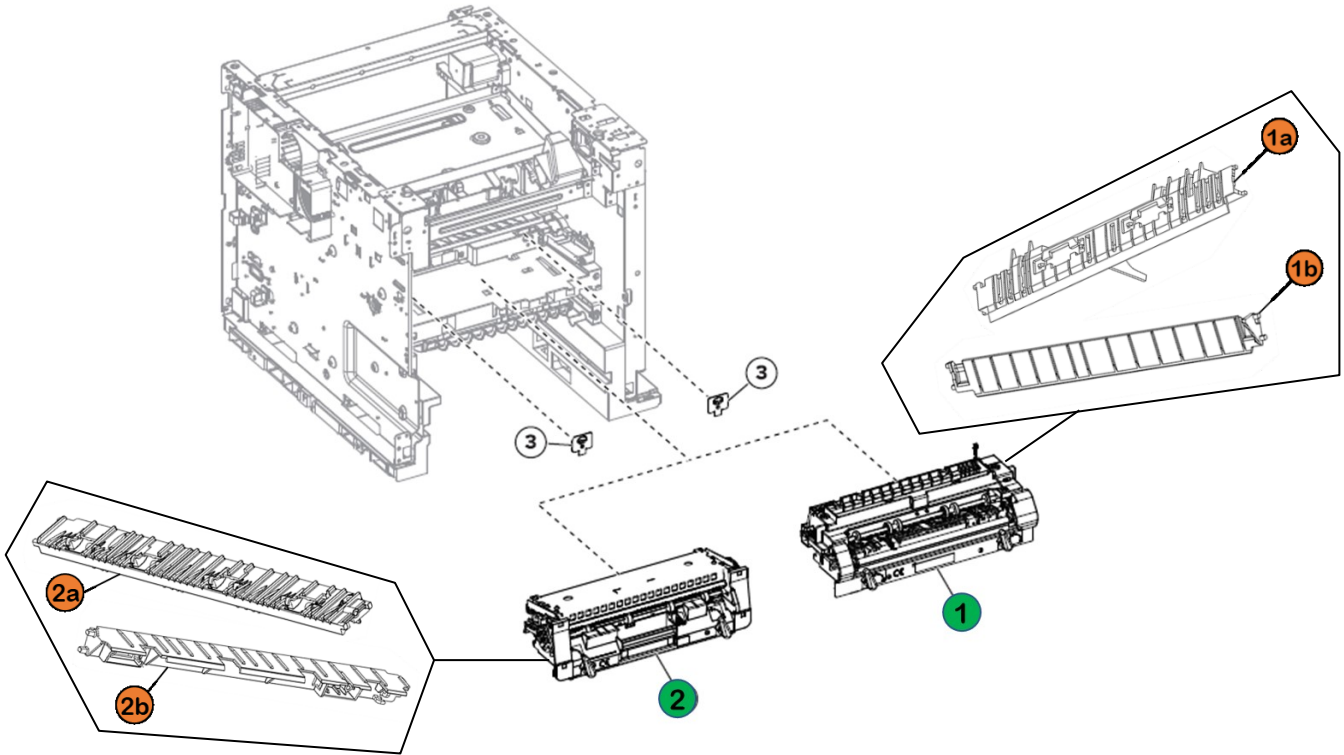


| Index | Description              |
|-------|--------------------------|
| 4a    | 50G2256 – Duct-Middle HR |

**MS72x/ MS82x and MX72x/ MX82x Series  
Location**

**Printed Circuit Boards >10cm<sup>2</sup> and LCD > 100cm<sup>2</sup>**

**Fuser**



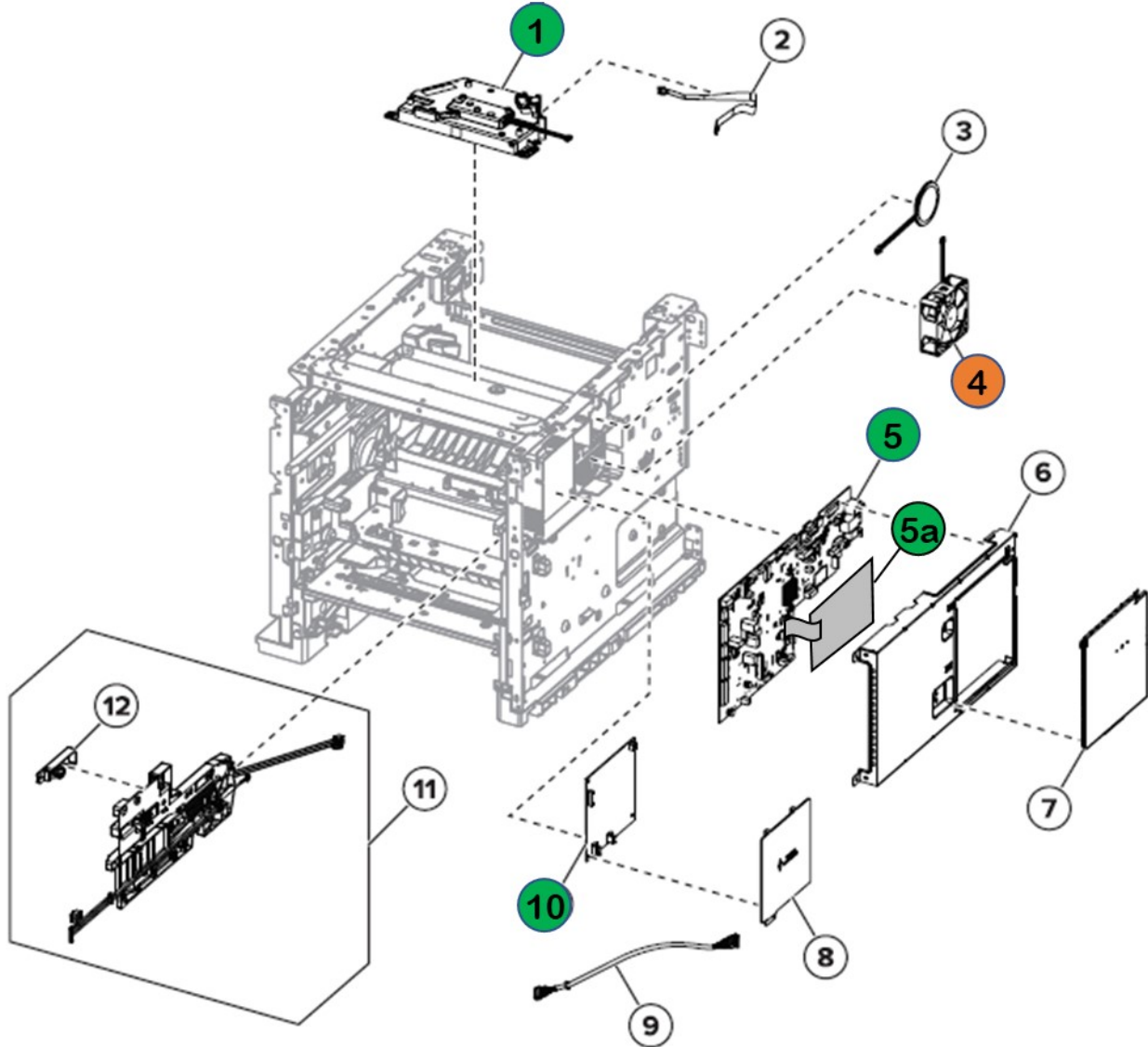
| Index | Description                             |
|-------|---|
| 1     | Hot roll fuser card within the assembly |
| 1a    | 50G8521 – Lower Exit                    |
| 1b    | 50G8570 – Entry                         |
| 2     | Belt fuser card within the assembly     |
| 2a    | 50G4018 – LOWER EXIT - FUSER            |
| 2b    | 50G4021 – UPPER EXIT - FUSER            |



**MS72x/ MS82x and MX72x/ MX82x Series  
Location**

**Printed Circuit Boards >10cm<sup>2</sup> and Brominated Plastic Components**

**Electronics 1**

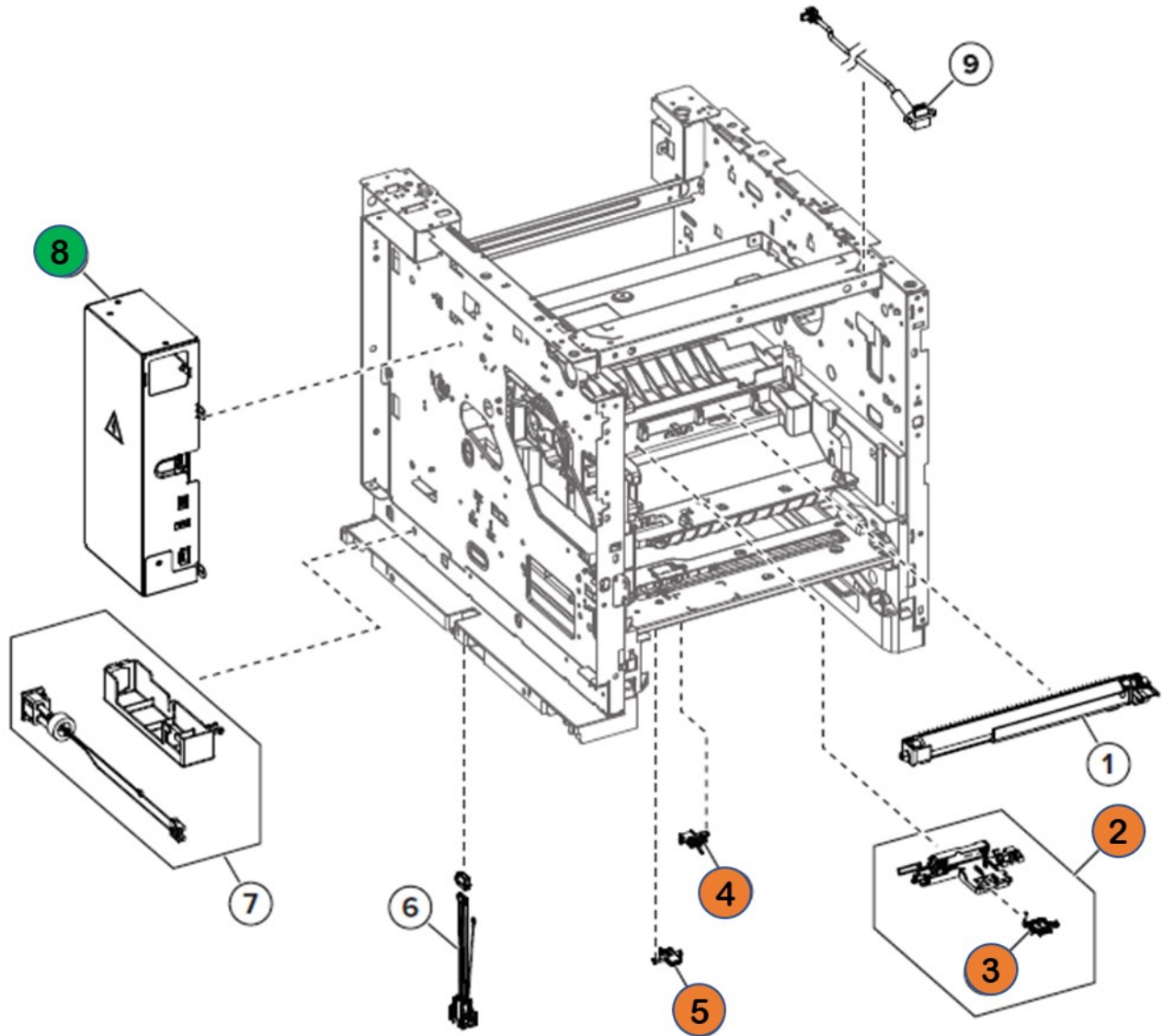


| Index | Description                         |
|-------|-------------------------------------|
| 1     | Printhead board within the assembly |
| 4     | Fan, 80 mm                          |
| 5     | Controller board                    |
| 5a    | Interface cards                     |
| 10    | HVPS                                |

MS72x/ MS82x and MX72x/ MX82x Series  
Location

Printed Circuit Boards >10cm<sup>2</sup> and Brominated Plastic Components

Electronics 2

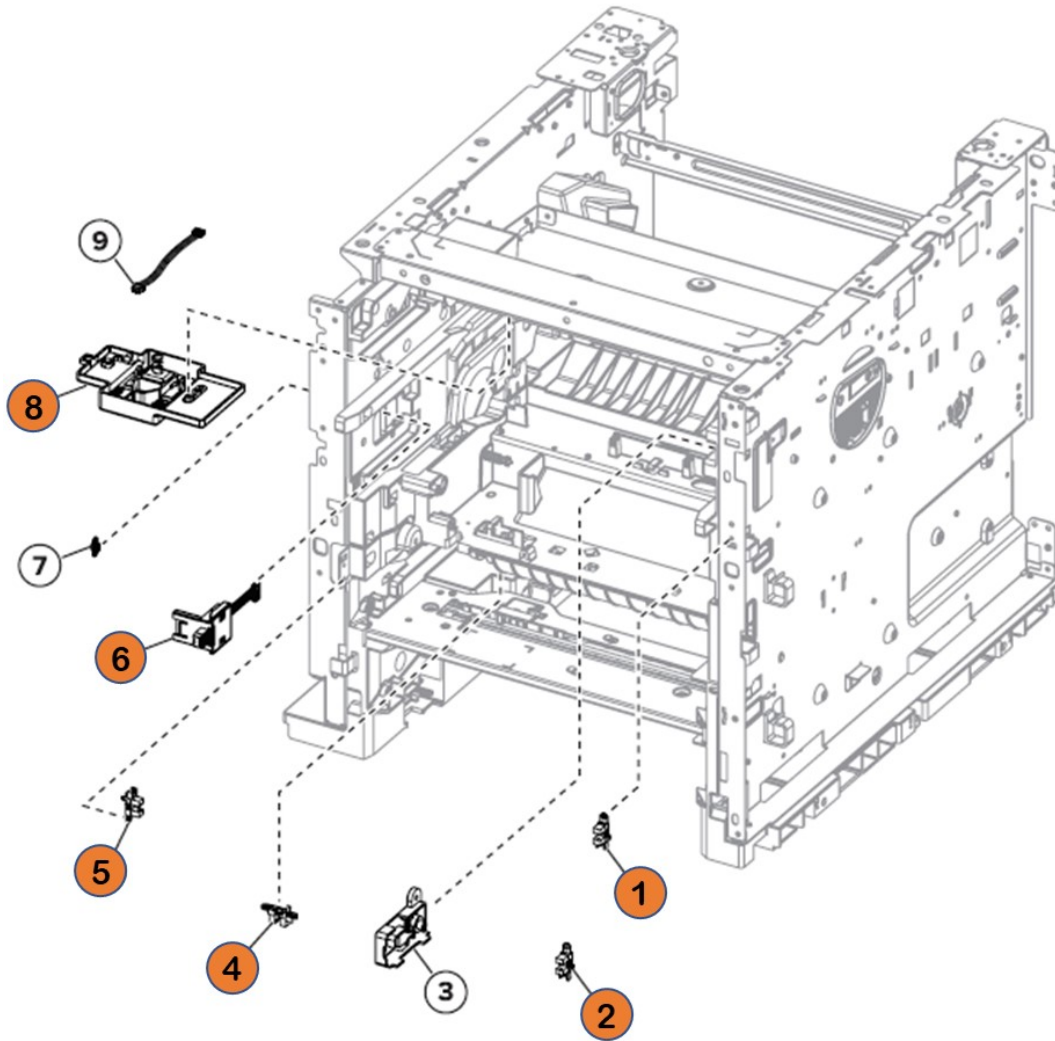


| Index | Description                  |
|-------|------------------------------|
| 2     | Sensor (toner density)       |
| 3     | Sensor (input)               |
| 4     | Sensor (tray 1 pass-through) |
| 5     | Sensor (tray 1 pick)         |
| 8     | LVPS                         |

**MS72x/ MS82x and MX72x/ MX82x Series  
Location**

**Printed Circuit Boards >10cm<sup>2</sup> and Brominated Plastic Components**

**Sensors 1**

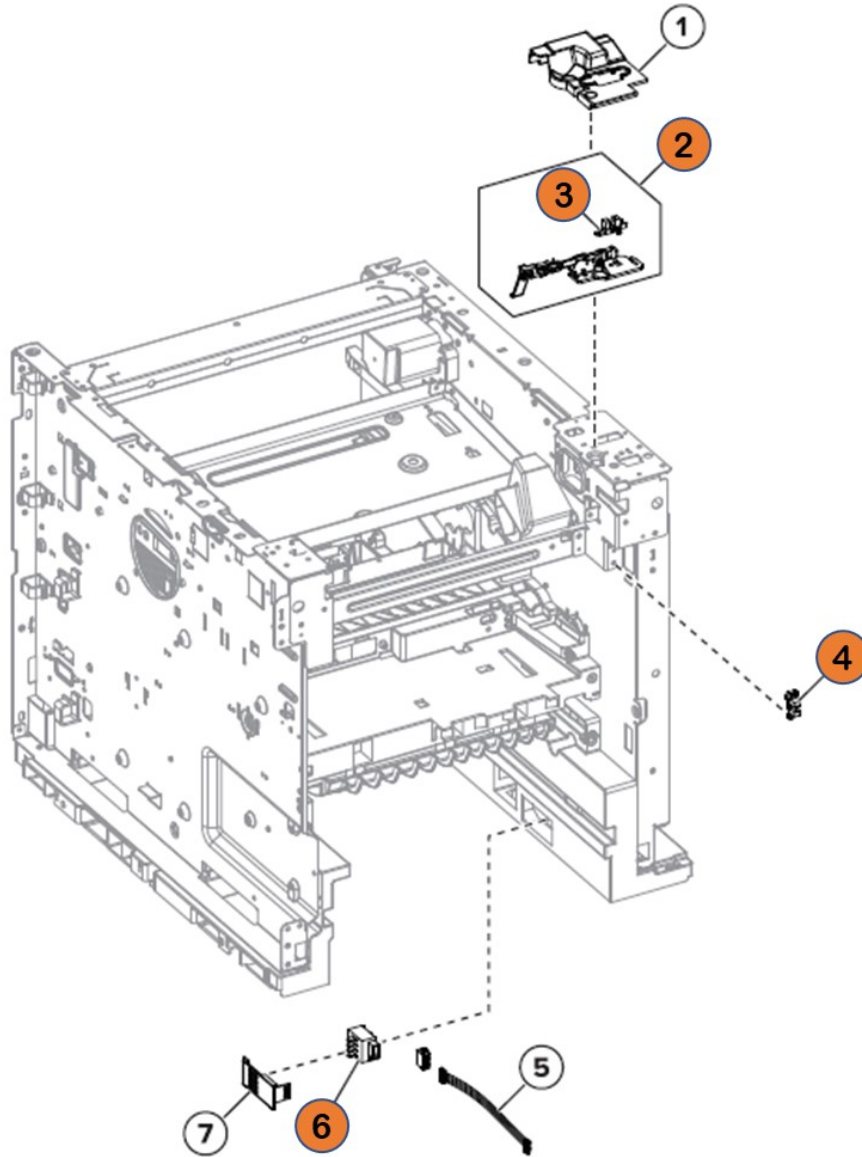


| Index | Description                      |
|-------|----------------------------------|
| 1     | Sensor (front door interlock)    |
| 2     | Sensor (toner cartridge shutter) |
| 4     | Sensor (duplex interlock)        |
| 5     | Sensor (MPF paper present)       |
| 6     | Sensor (toner smart chip)        |
| 8     | Sensor (toner low)               |

**MS72x/ MS82x and MX72x/ MX82x Series  
Location**

**Printed Circuit Boards >10cm<sup>2</sup> and Brominated Plastic Components**

**Sensor 2**

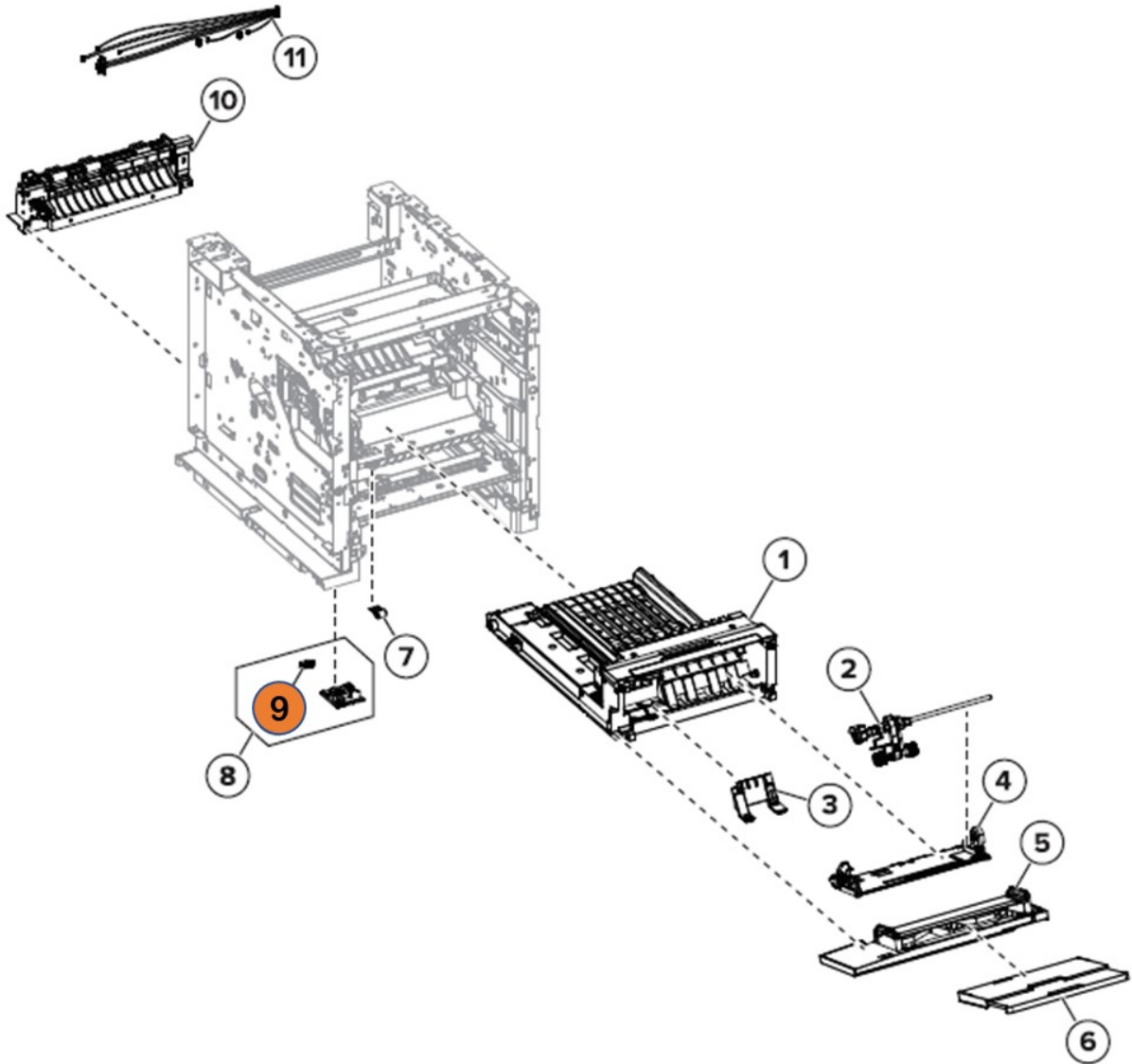


| Index | Description                              |
|-------|--|
| 2     | Sensor (standard bin full) with actuator |
| 3     | Sensor (standard bin full)               |
| 4     | Sensor (rear door interlock)             |
| 6     | Sensor (paper size)                      |

MS72x/ MS82x and MX72x/ MX82x Series  
Location

Printed Circuit Boards >10cm<sup>2</sup> and Brominated Plastic Components

Duplex

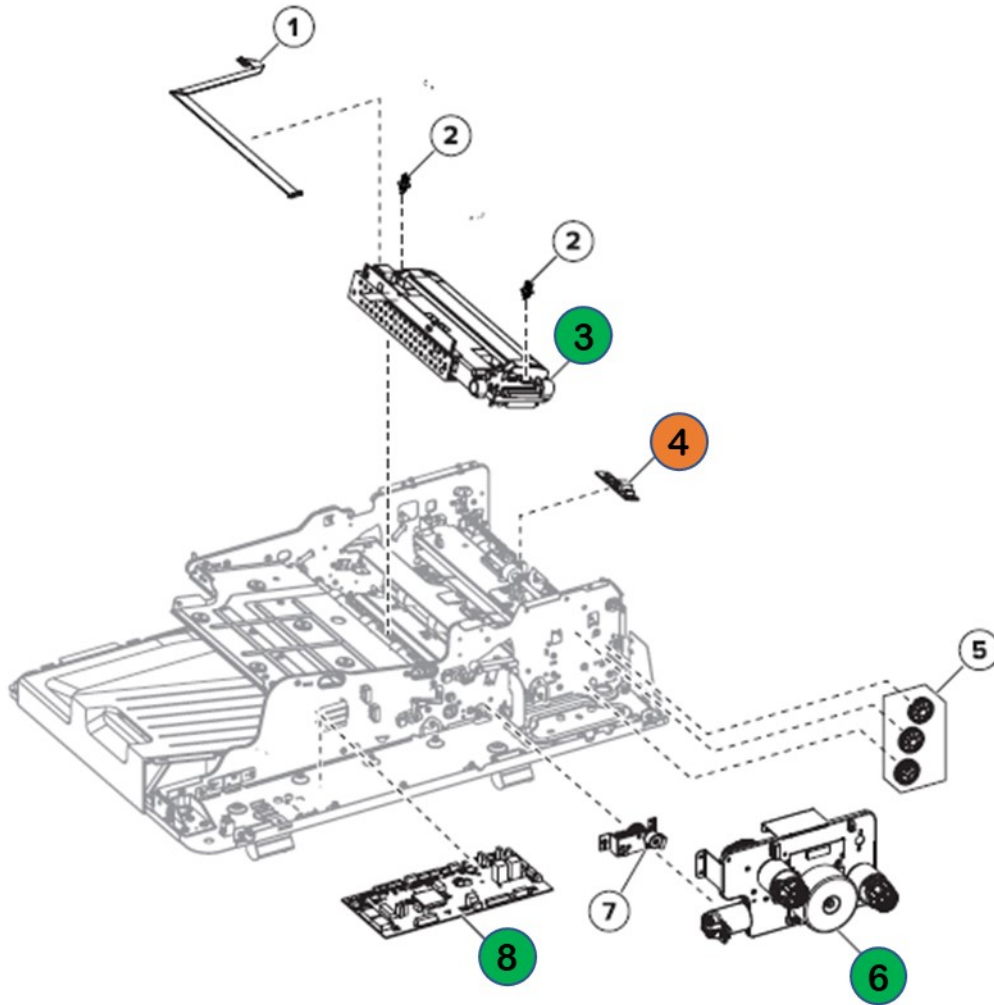


| Index | Description          |
|-------|----------------------|
| 9     | Sensor (duplex path) |

**MS72x/ MS82x and MX72x/ MX82x Series  
Location**

**Brominated Plastic Components**

**ADF 4**



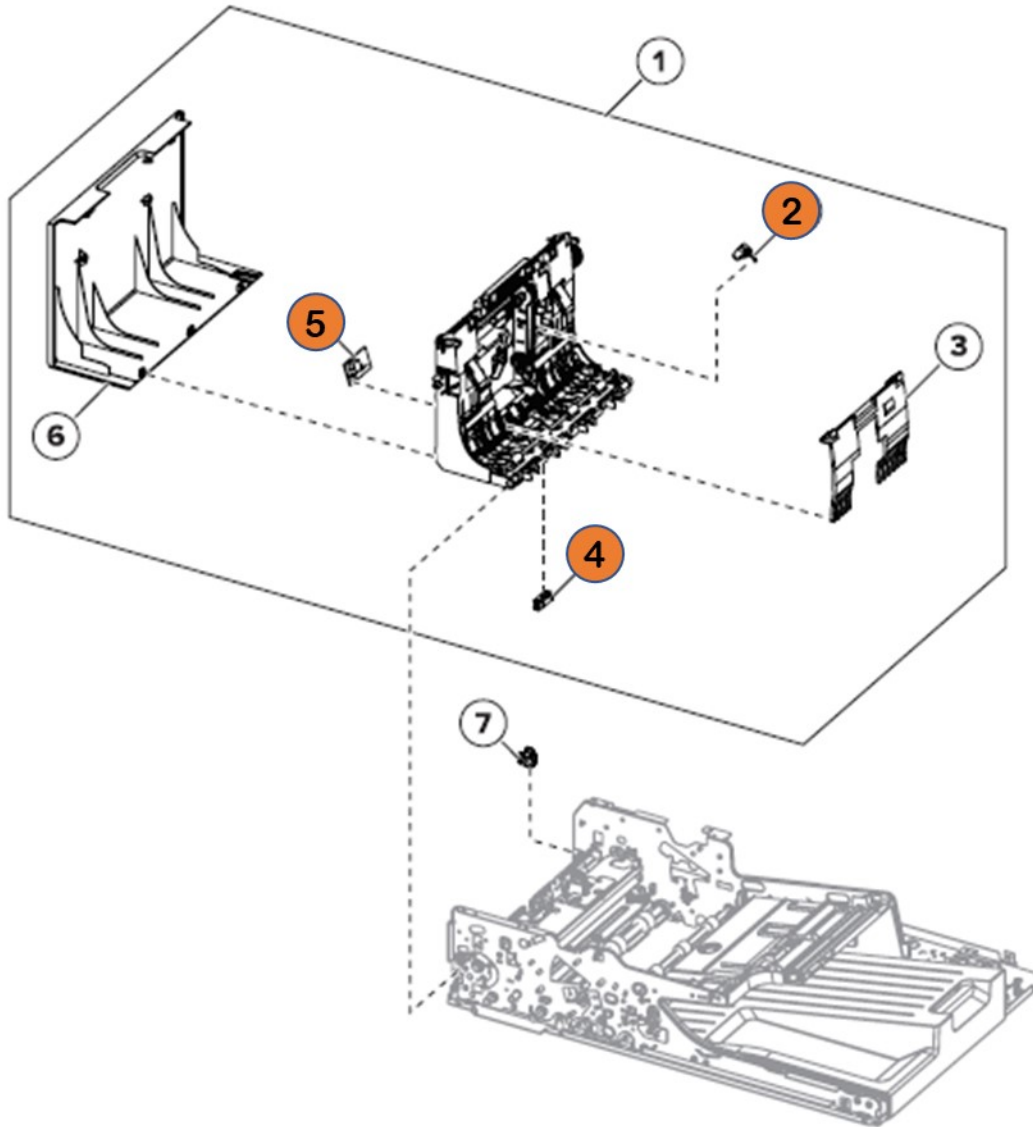
| Index | Description                               |
|-------|---|
| 3     | ADF scanner CCD board within the assembly |
| 4     | Sensor (ADF multifeed receiver)           |
| 6     | Motor (ADF)                               |
| 8     | ADF controller board                      |



**MS72x/ MS82x and MX72x/ MX82x Series  
Location**

**Brominated Plastic Components**

**ADF 5**

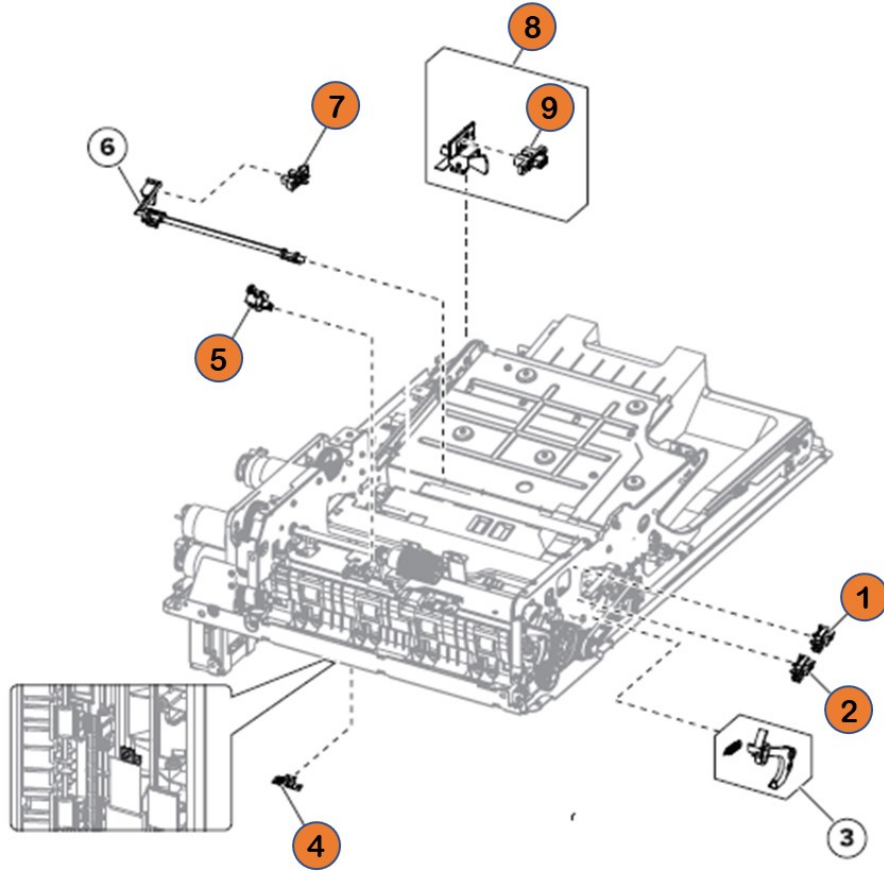


| Index | Description                        |
|-------|------------------------------------|
| 3     | Sensor (ADF gap detect)            |
| 6     | Sensor (ADF deskew)                |
| 7     | Sensor (ADF multifeed transmitter) |

**MS72x/ MS82x and MX72x/ MX82x Series  
Location**

**Brominated Plastic Components**

**ADF 6**



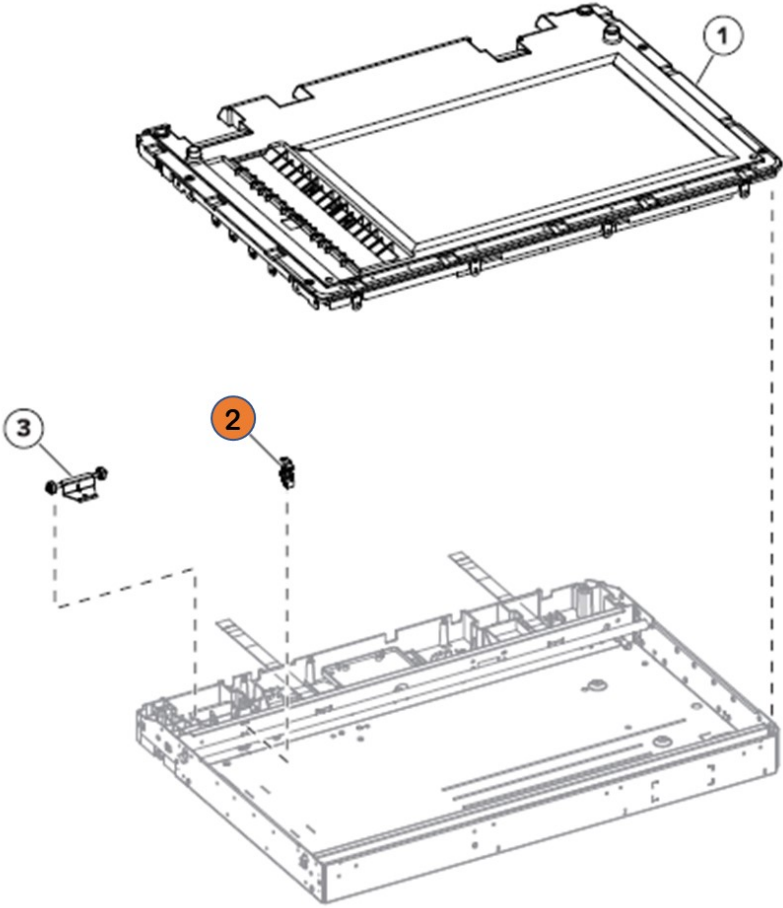
| Index | Description                        |
|-------|------------------------------------|
| 1     | Sensor (ADF top door interlock)    |
| 2     | Sensor (ADF bottom door interlock) |
| 4     | Sensor (ADF 1st scan)              |
| 5     | Sensor (ADF pick)                  |
| 7     | Sensor (ADF paper exit)            |
| 8     | Sensor (ADF closed) with actuator  |
| 9     | Sensor (ADF closed)                |



**MS72x/ MS82x and MX72x/ MX82x Series  
Location**

**Brominated Plastic Components**

**Flatbed scanner 2**

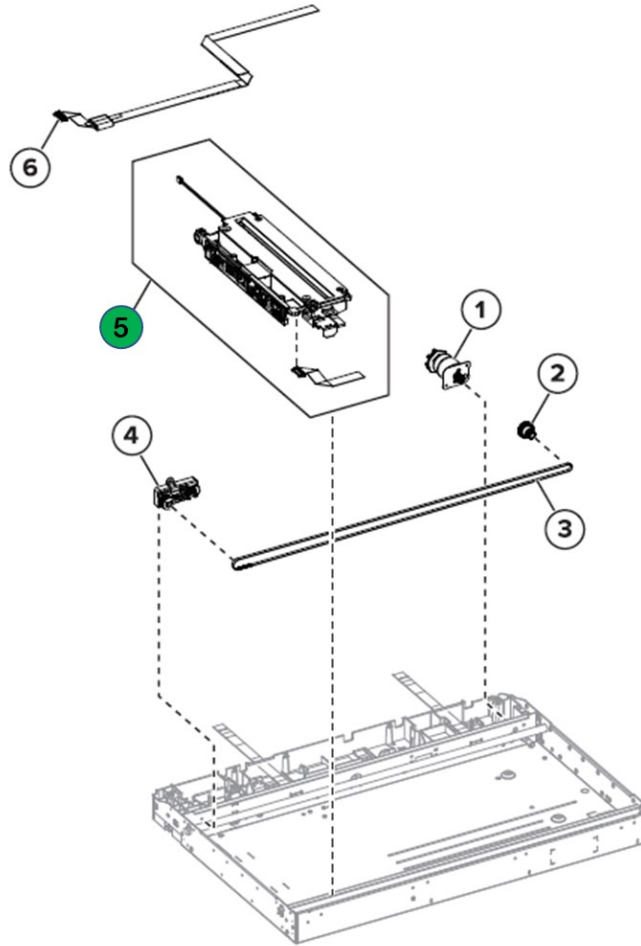


| Index | Description      |
|-------|------------------|
| 2     | Sensor (FB CCDM) |

**MS72x/ MS82x and MX72x/ MX82x Series  
Location**

**Brominated Plastic Components**

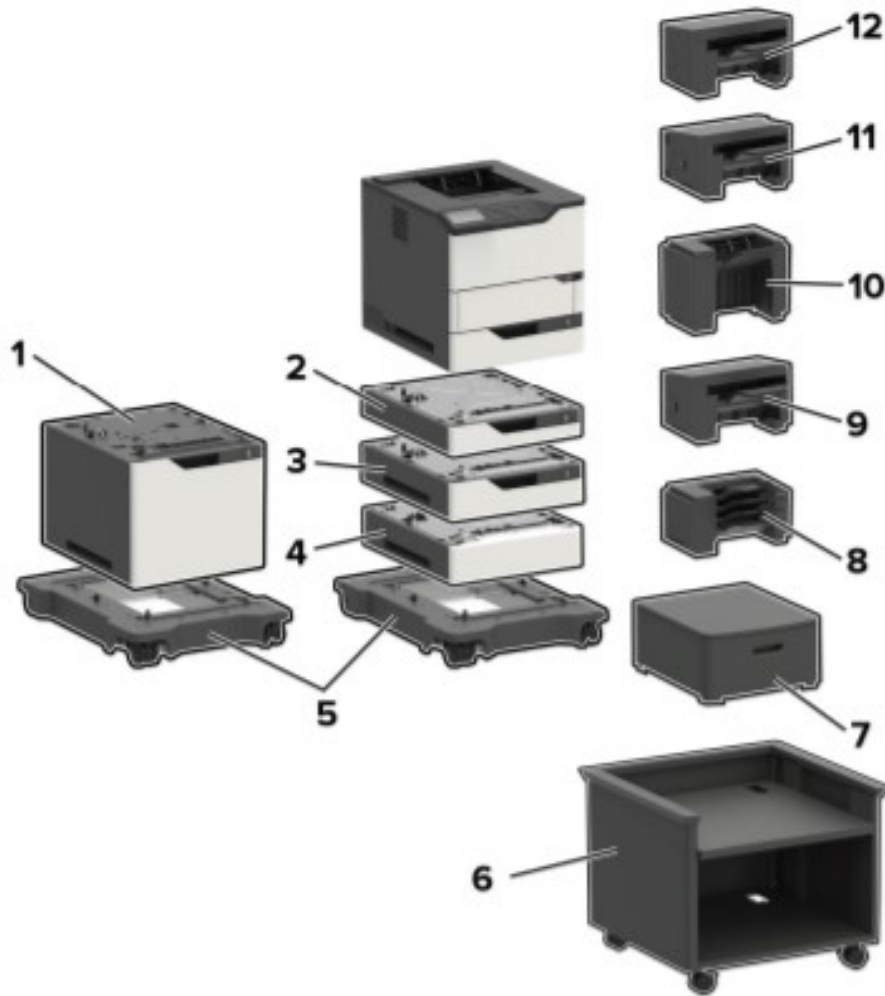
**Flatbed scanner 3**



| <b>Index</b> | <b>Description</b>                             |
|--------------|--|
| 5            | Flatbed scanner CCDM board within the assembly |

**MS72x/ MS82x and MX72x/ MX82x Series  
Location**

**MS72x/ MS82x Series Paper handling devices**

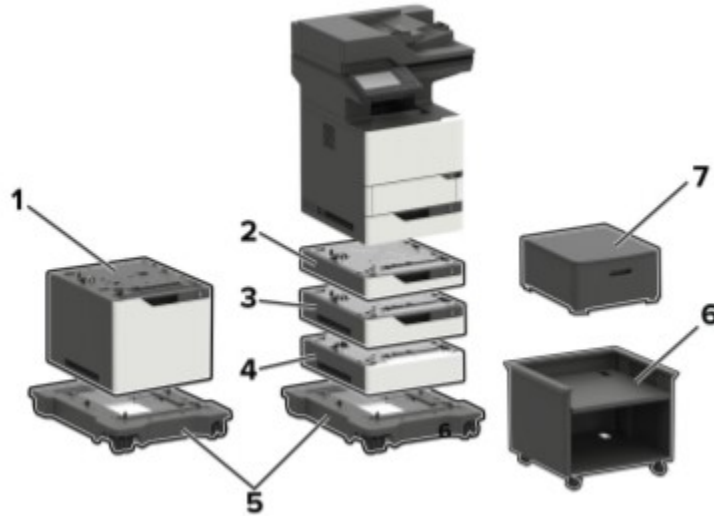


| Index | Description                   |
|-------|-------------------------------|
| 1     | 2100-sheet tray               |
| 2     | 250-sheet tray                |
| 3     | 250-sheet lockable tray       |
| 4     | 550-sheet tray                |
| 5     | Spacer*                       |
| 6     | Caster base*                  |
| 7     | Adjustable printer stand*     |
| 8     | Swivel cabinet*               |
| 9     | 4-bin mailbox                 |
| 10    | Output expander               |
| 11    | High capacity output expander |
| 12    | Staple, hole punch finisher   |

Options marked with (\*) are non-Electrical and electronic units

**MS72x/ MS82x and MX72x/ MX82x Series  
Location**

**MX72x Series Paper handling devices**

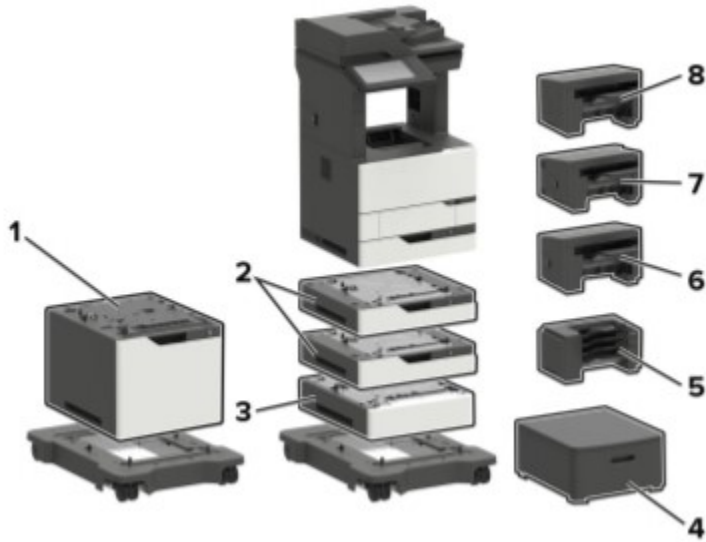


| Index | Description                              |
|-------|--|
| 1     | 2100-sheet tray                          |
| 2     | 250-sheet tray / 250-sheet lockable tray |
| 3     | 550-sheet tray / 550-sheet lockable tray |
| 4     | Spacer*                                  |
| 5     | Caster base*                             |
| 6     | Adjustable printer stand*                |
| 7     | Swivel cabinet*                          |

Options marked with (\*) are non-Electrical and electronic units

**MS72x/ MS82x and MX72x/ MX82x Series  
Location**

**MX82x Series Paper handling devices**



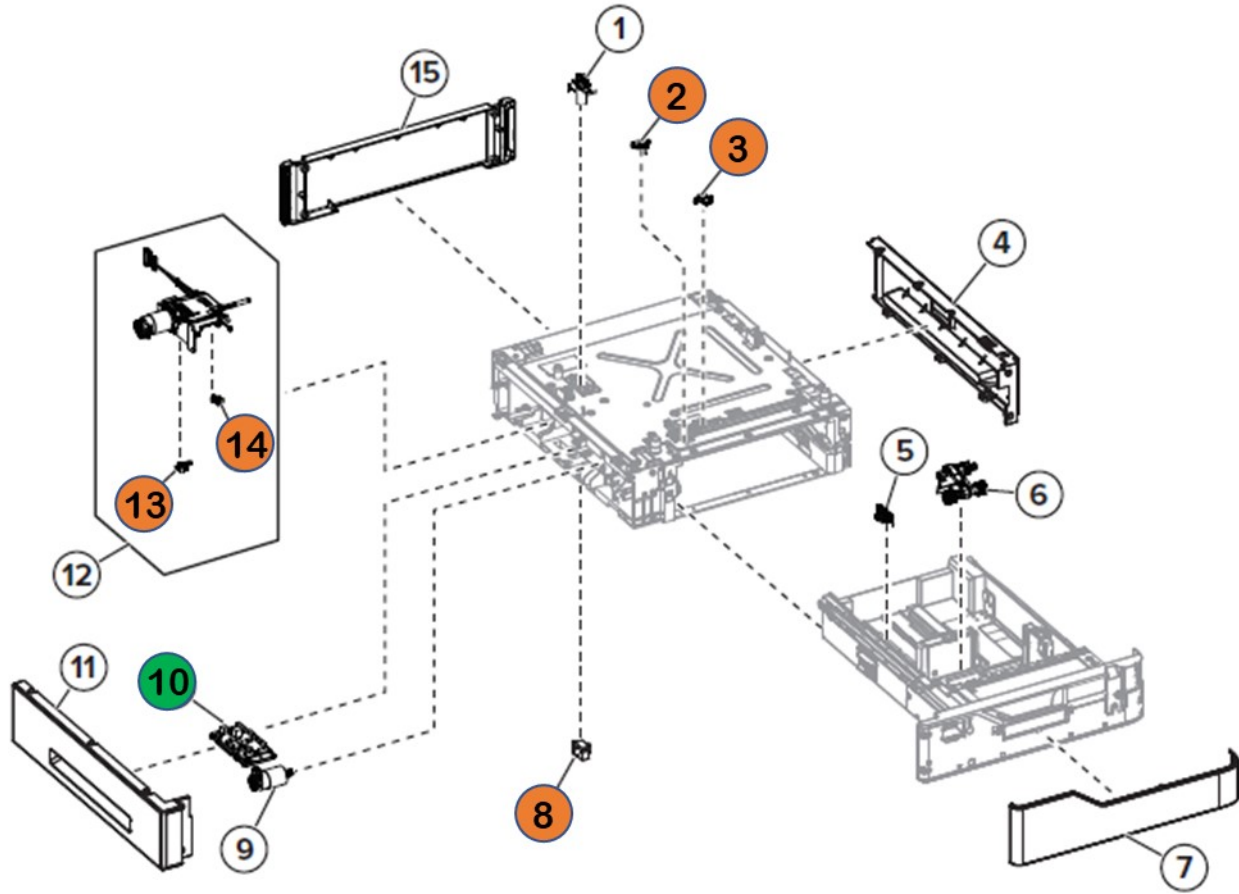
| <b>Index</b> | <b>Description</b>          |
|--------------|-----------------------------|
| 1            | 2100-sheet tray             |
| 2            | 550-sheet tray              |
| 3            | Spacer*                     |
| 4            | Swivel cabinet*             |
| 5            | 4-bin mailbox               |
| 6            | Staple finisher             |
| 7            | Staple, hole punch finisher |
| 8            | Offset stacker              |

Options marked with (\*) are non-Electrical and electronic units

**MS72x/ MS82x and MX72x/ MX82x Series  
Location**

**Printed Circuit Boards >10cm<sup>2</sup> and Brominated Plastic Components**

**250 and 550 Sheet Tray Option**

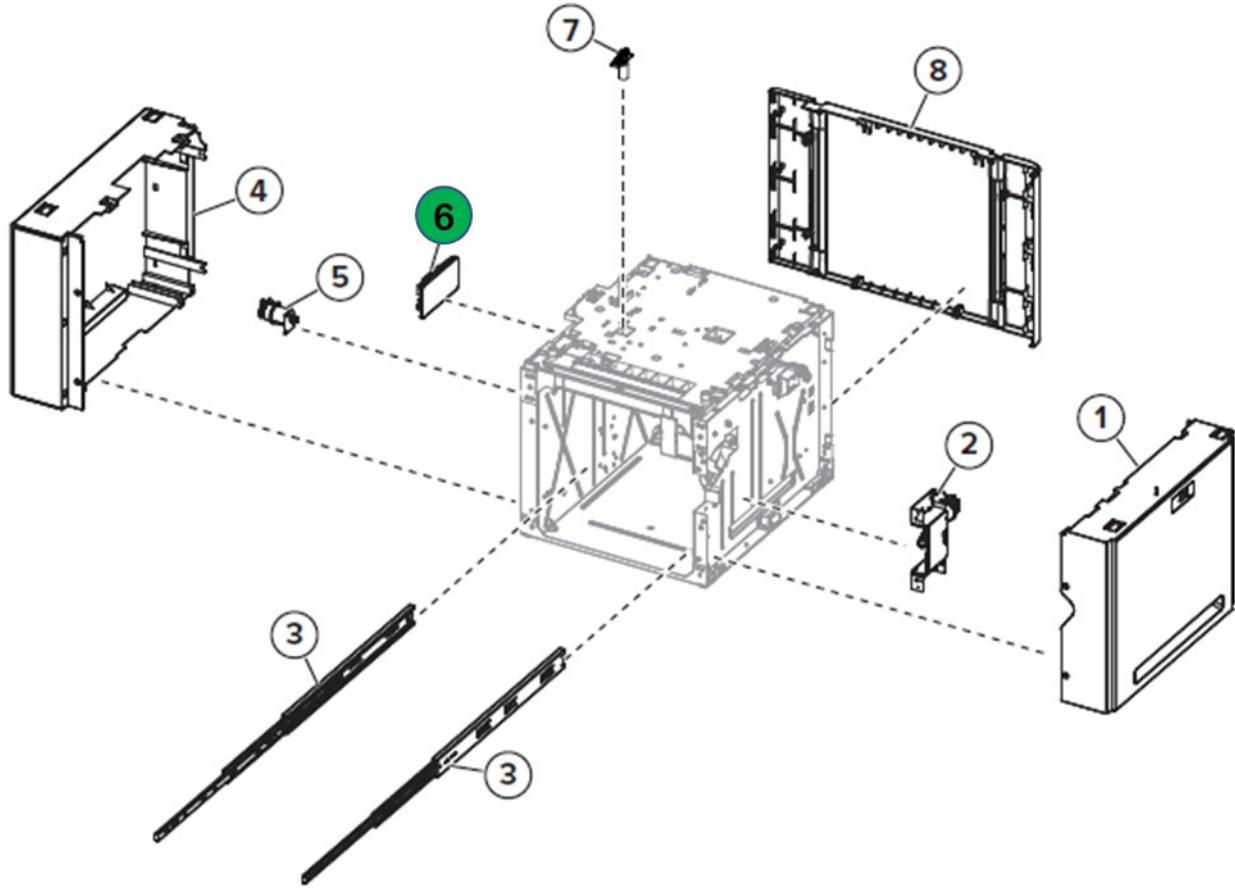


| Index | Description                    |
|-------|--------------------------------|
| 2     | Sensor (pick)                  |
| 3     | Sensor (pass-through)          |
| 8     | Sensor (paper size)            |
| 10    | 250/ 550 Tray Controller board |
| 13    | Sensor (paper present)         |
| 14    | Sensor (pick roller index)     |

**MS72x/ MS82x and MX72x/ MX82x Series  
Location**

**Brominated Plastic Components**

**2100 Sheet Tray Option 2**

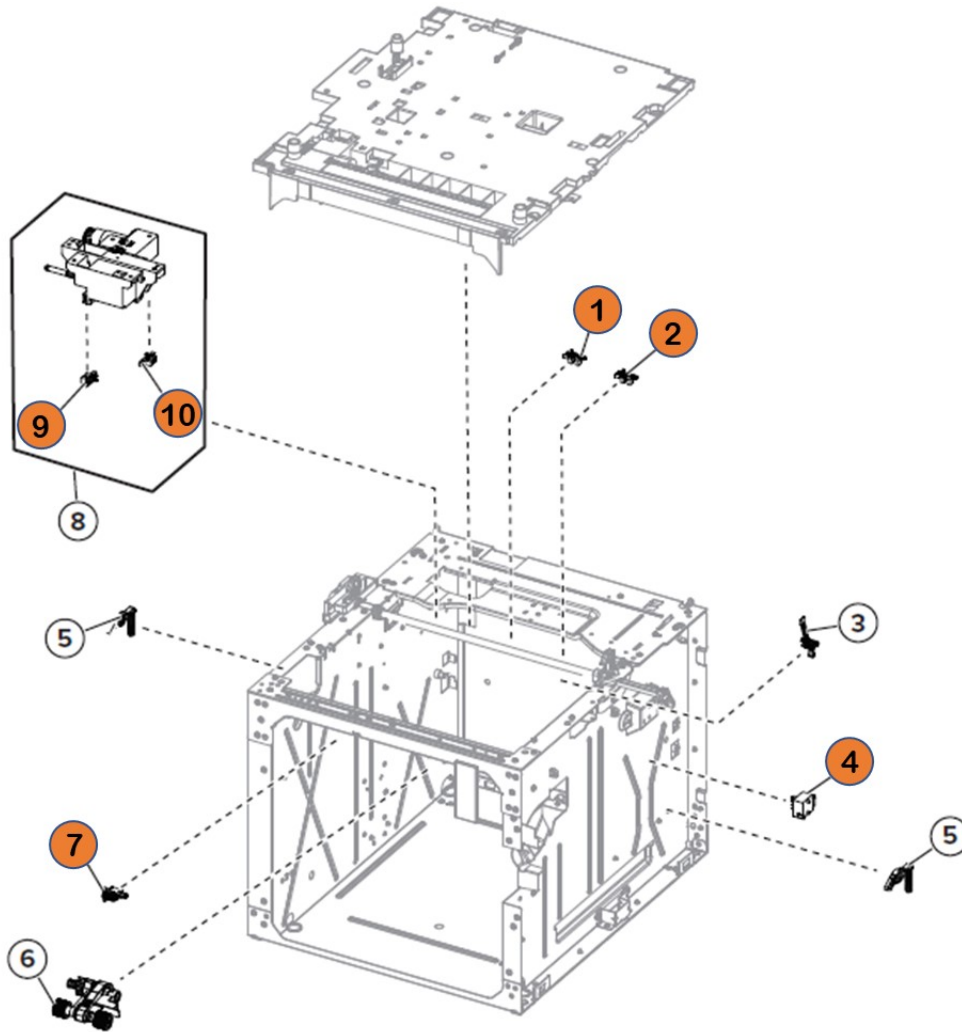


| Index | Description                      |
|-------|----------------------------------|
| 1     | 2100-sheet tray controller board |

**MS72x/ MS82x and MX72x/ MX82x Series  
Location**

**Brominated Plastic Components**

**2100 Sheet Tray Option 3**



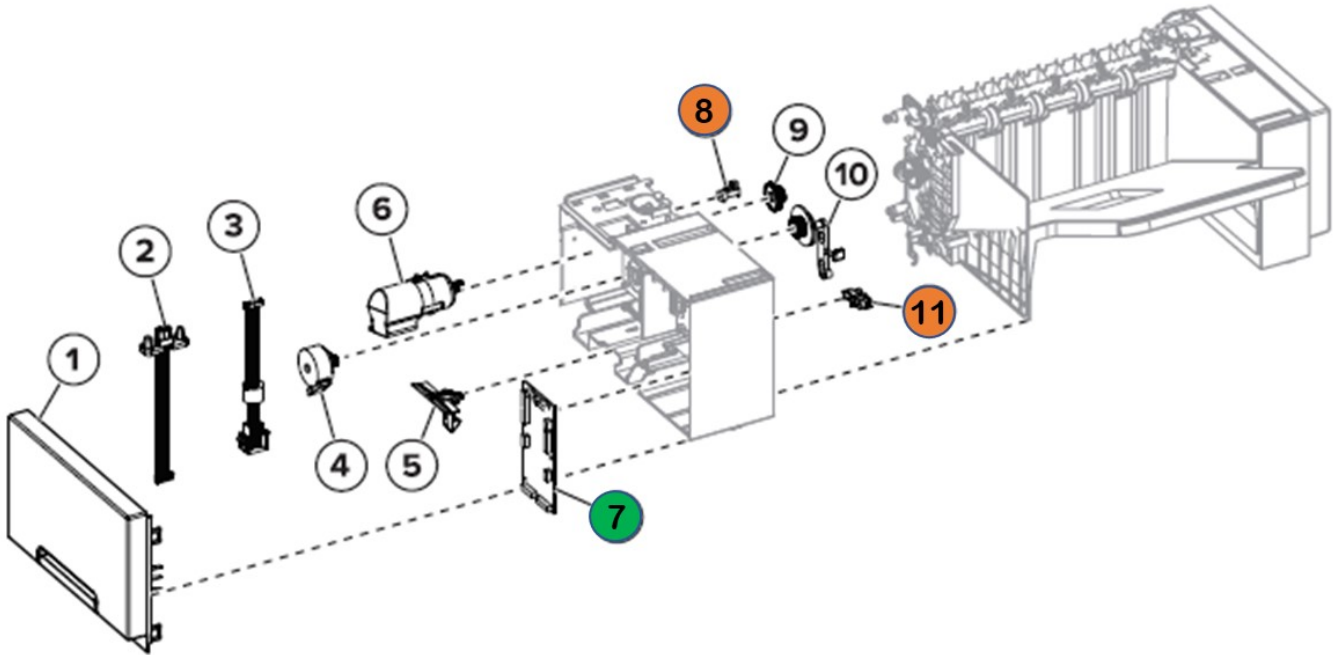
| Index | Description                                |
|-------|--|
| 1     | Sensor (2100-sheet tray near empty)        |
| 2     | Sensor (2100-sheet tray A5 length guide)   |
| 4     | Sensor (2100-sheet tray paper size)        |
| 7     | Sensor (2100-sheet tray pick)              |
| 9     | Sensor (2100-sheet tray pick roller index) |
| 10    | Sensor (2100-sheet tray paper present)     |



MS72x/ MS82x and MX72x/ MX82x Series  
Location

Brominated Plastic Components

Output expander 1

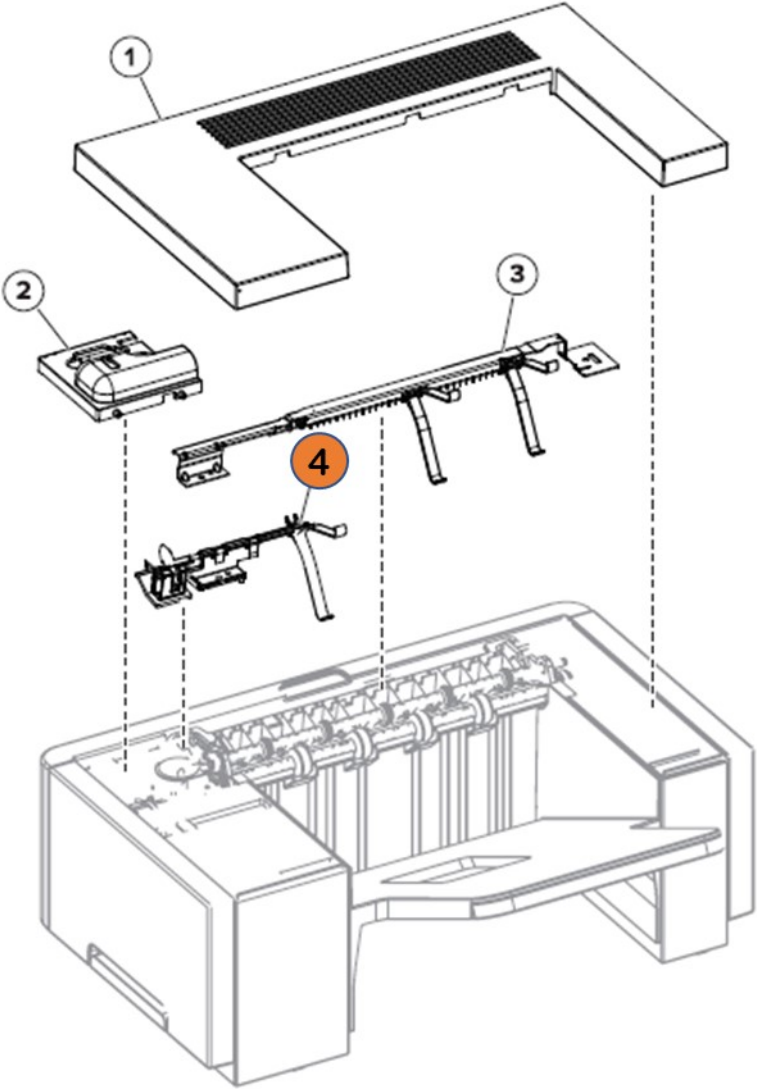


| Index | Description                      |
|-------|----------------------------------|
| 7     | Output expander controller board |
| 8     | Sensor (OE rear door interlock)  |
| 11    | Sensor (OE diverter plunger)     |

**MS72x/ MS82x and MX72x/ MX82x Series  
Location**

**Brominated Plastic Components**

**Output expander 3**

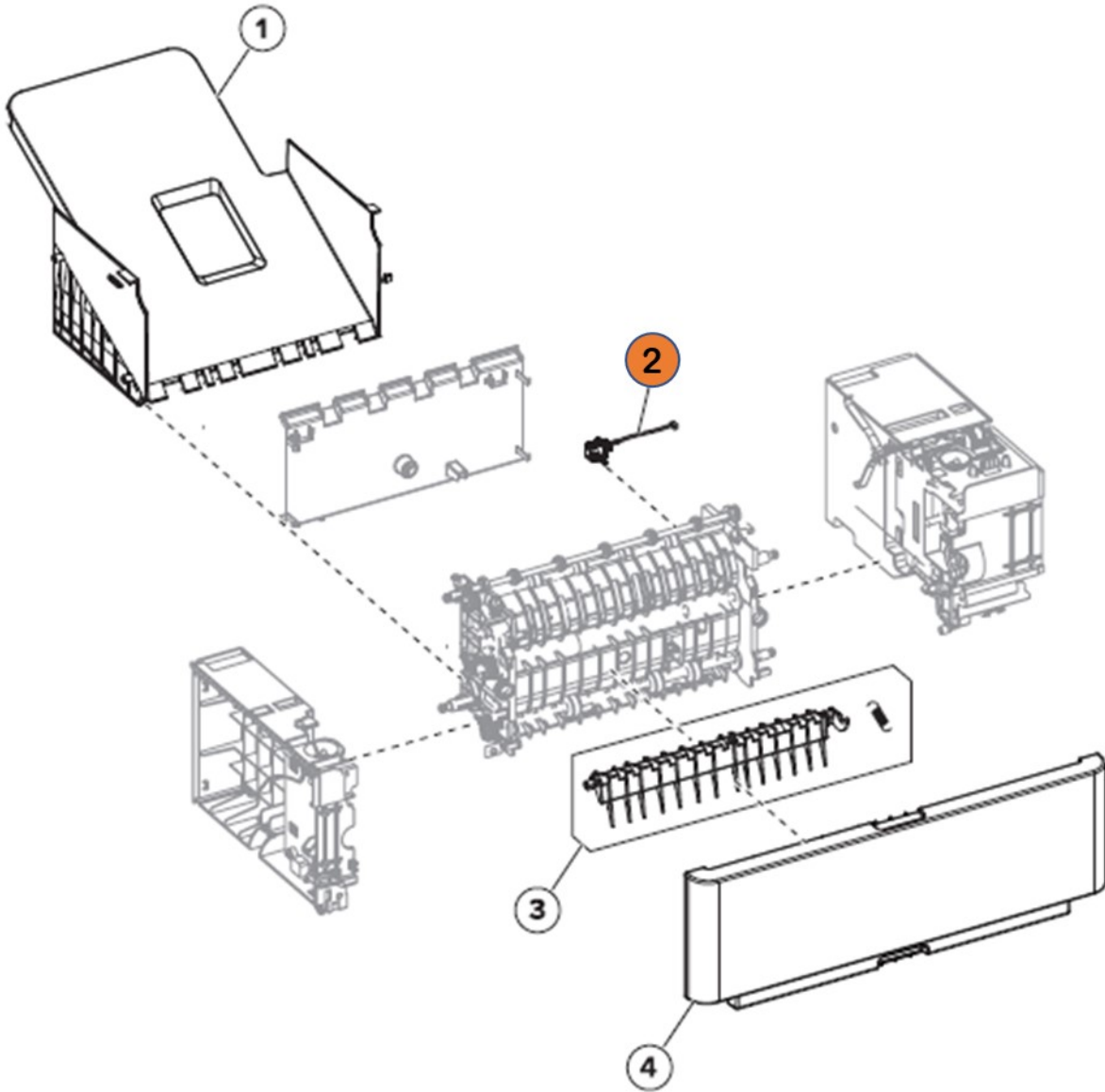


| Index | Description                    |
|-------|--------------------------------|
| 4     | Sensor (OE bin full) with flag |

**MS72x/ MS82x and MX72x/ MX82x Series  
Location**

**Brominated Plastic Components**

**Output expander 4**

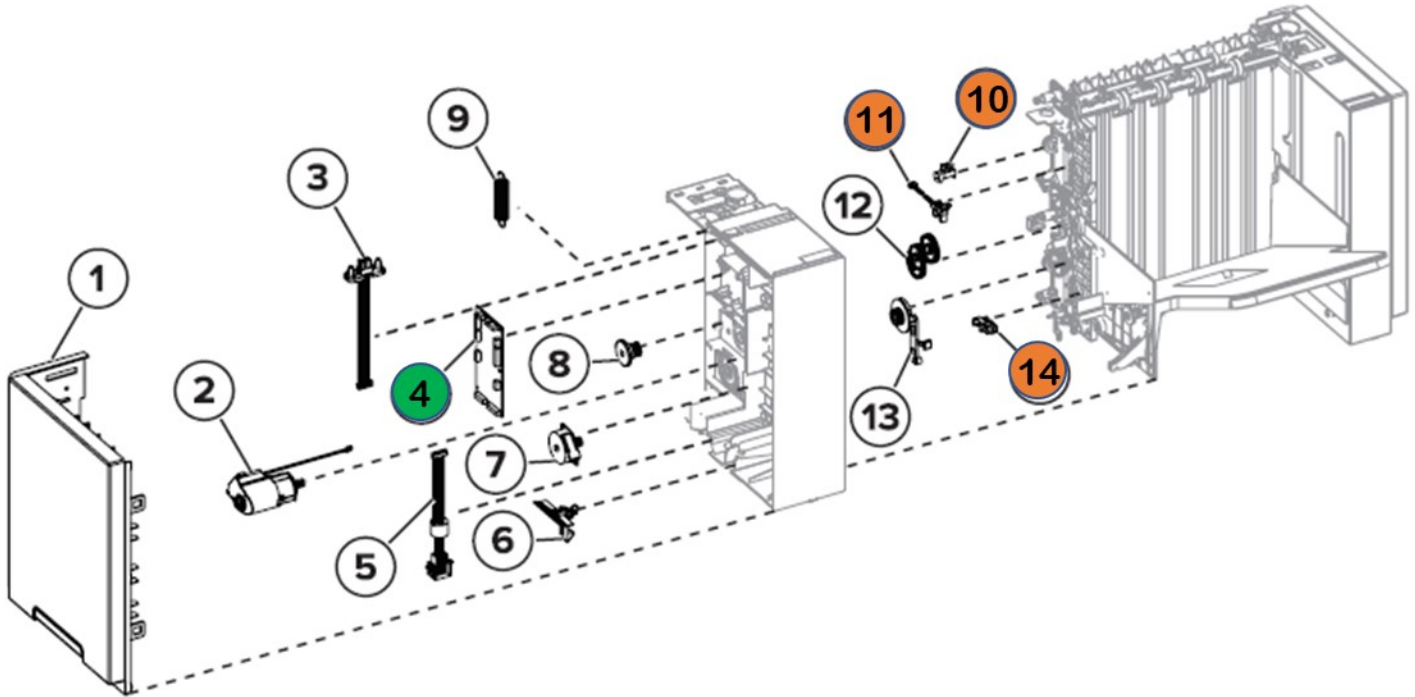


| Index | Description              |
|-------|--------------------------|
| 2     | Sensor (OE pass-through) |

**MS72x/ MS82x and MX72x/ MX82x Series  
Location**

**Brominated Plastic Components**

**High capacity output expander 1**

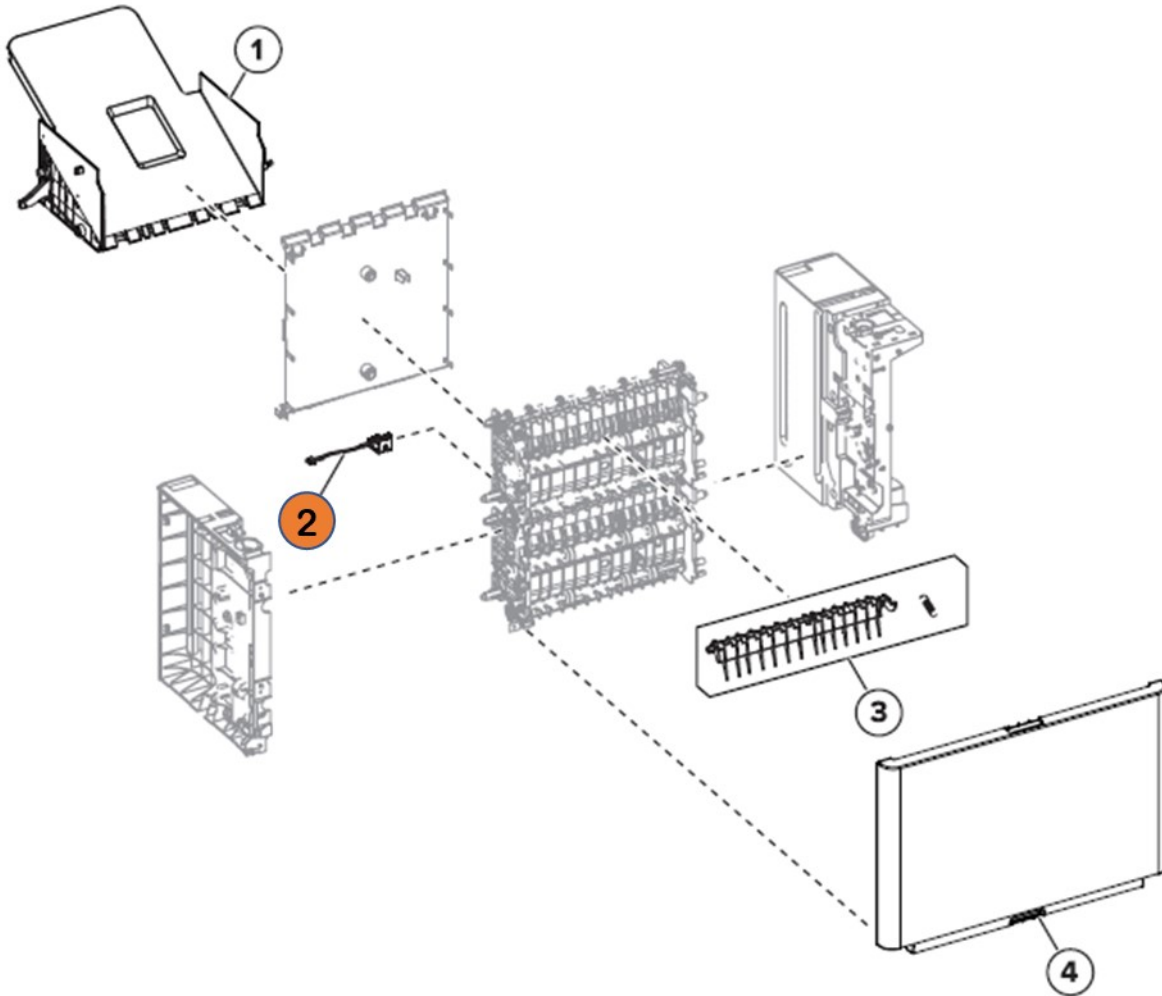


| Index | Description                       |
|-------|-----------------------------------|
| 4     | HCOE controller board             |
| 10    | Sensor (HCOE rear door interlock) |
| 11    | Sensor (OE diverter plunger)      |
| 14    | Sensor (HCOE diverter)            |

**MS72x/ MS82x and MX72x/ MX82x Series  
Location**

**Brominated Plastic Components**

**High capacity output expander 2**

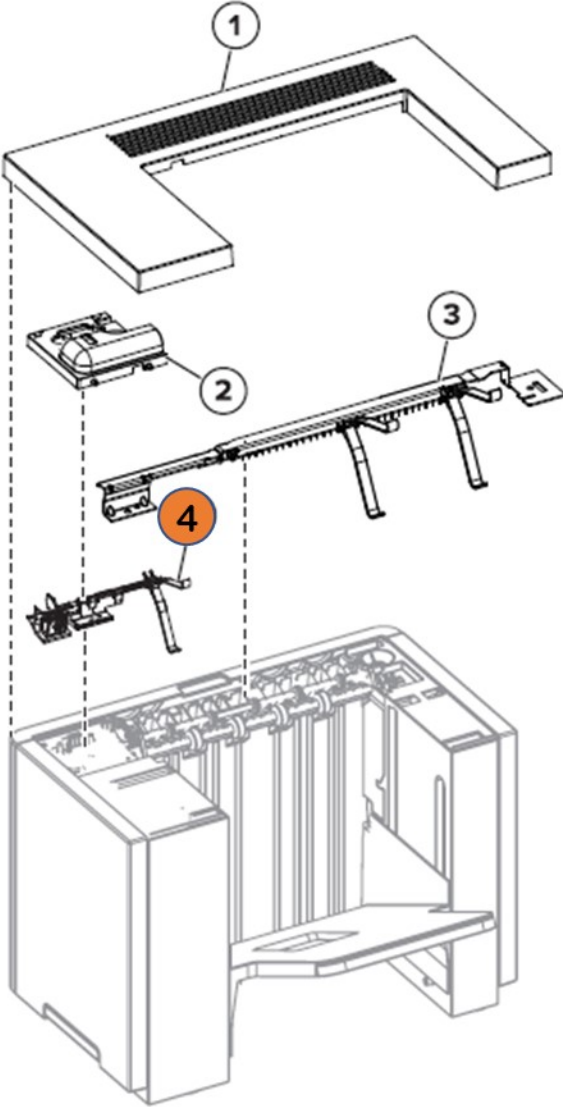


| <b>Index</b> | <b>Description</b>         |
|--------------|----------------------------|
| 2            | Sensor (HCOE pass-through) |

**MS72x/ MS82x and MX72x/ MX82x Series  
Location**

**Brominated Plastic Components**

**High capacity output expander 4**

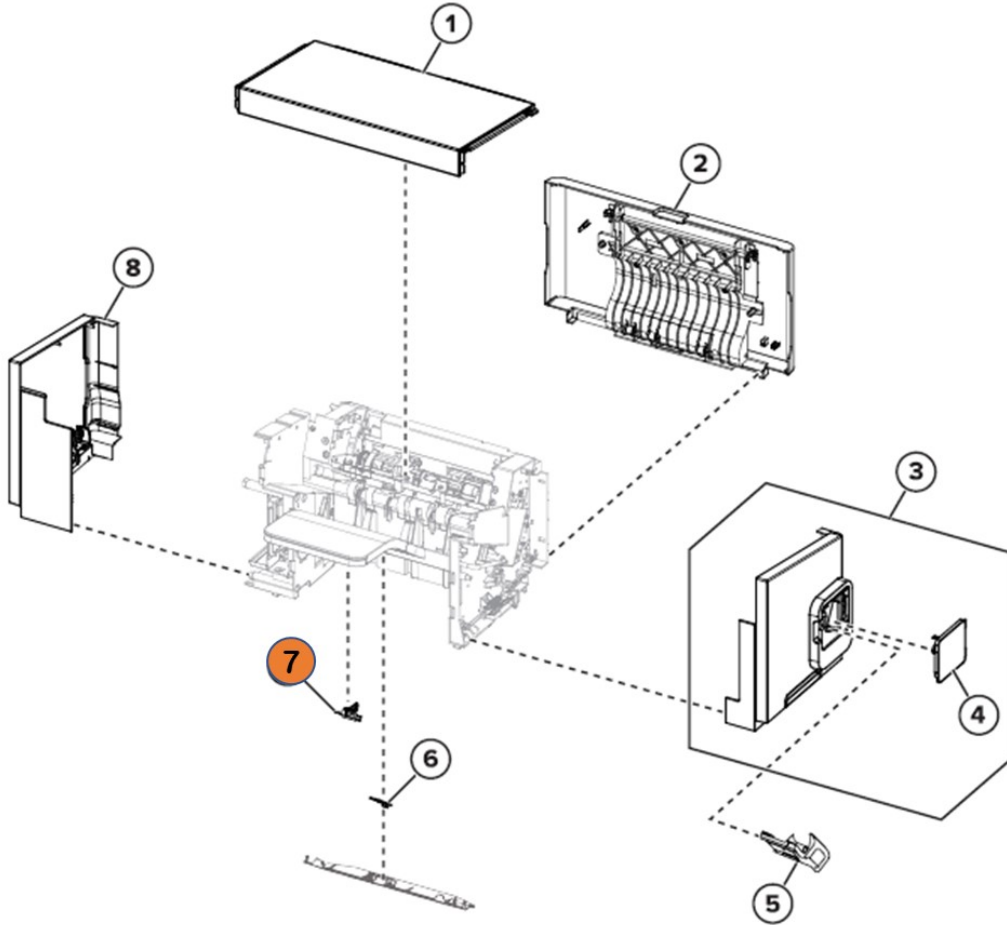


| Index | Description                      |
|-------|----------------------------------|
| 4     | Sensor (HCOE bin full) with flag |

**MS72x/ MS82x and MX72x/ MX82x Series  
Location**

**Brominated Plastic Components**

**Staple finisher 1**

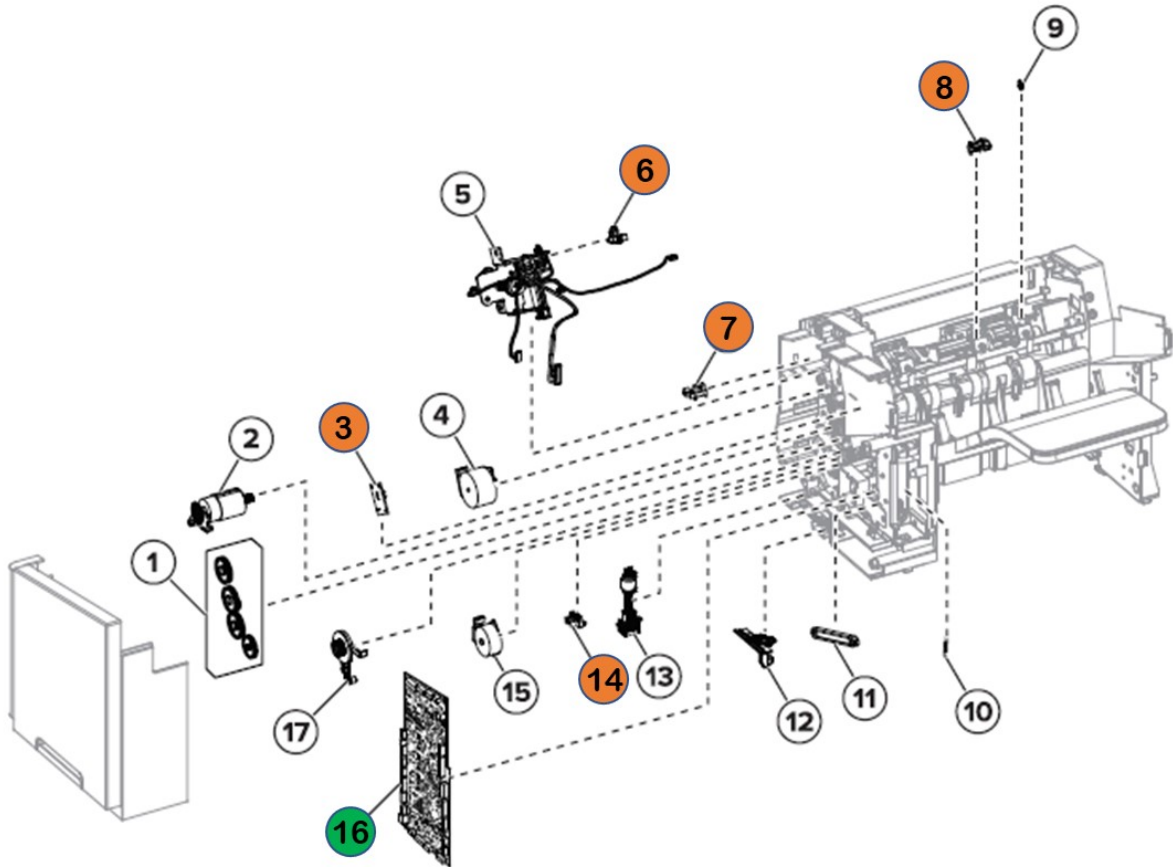


| <b>Index</b> | <b>Description</b>                  |
|--------------|-------------------------------------|
| 7            | Sensor (finisher bin paper present) |

**MS72x/ MS82x and MX72x/ MX82x Series  
Location**

**Brominated Plastic Components**

**Staple finisher 2**



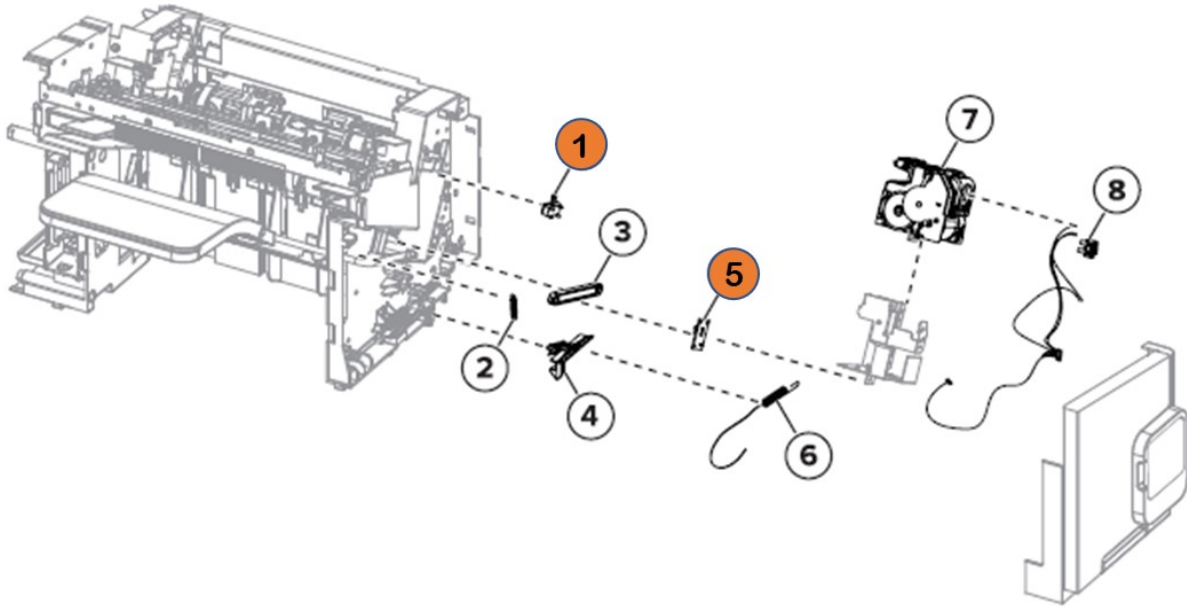
| Index | Description                                  |
|-------|--|
| 3     | Sensor (staple finisher bin full)            |
| 6     | Sensor (staple finisher stack height)        |
| 7     | Sensor (staple finisher rear door interlock) |
| 8     | Sensor (staple finisher paddle)              |
| 14    | Sensor (staple finisher diverter plunger)    |
| 16    | Staple finisher controller board             |



**MS72x/ MS82x and MX72x/ MX82x Series  
Location**

**Brominated Plastic Components**

**Staple finisher 3**

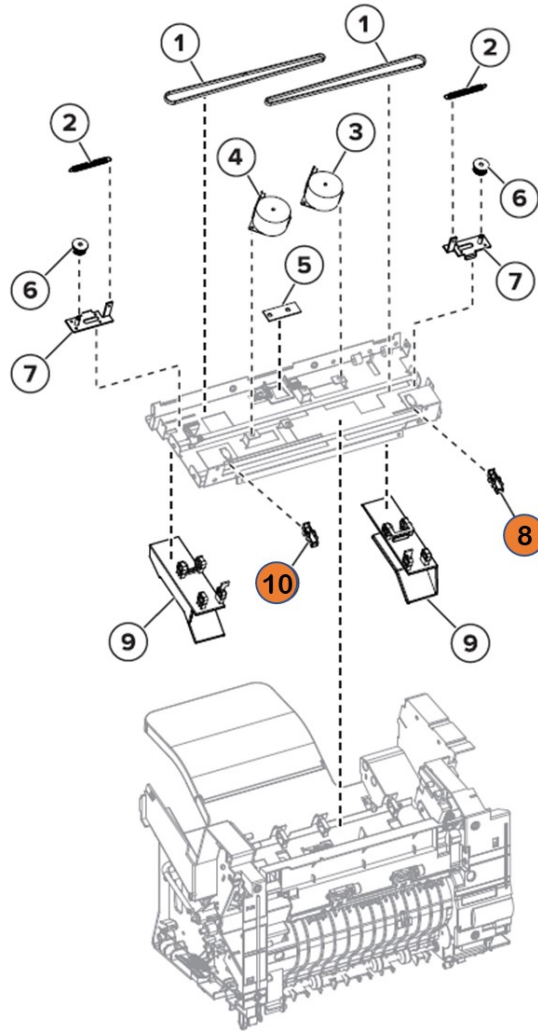


| <b>Index</b> | <b>Description</b>                     |
|--------------|--|
| 1            | Sensor (staple throat paper present)   |
| 5            | Sensor (staple finisher bin full send) |

**MS72x/ MS82x and MX72x/ MX82x Series  
Location**

**Brominated Plastic Components**

**Staple finisher 4**

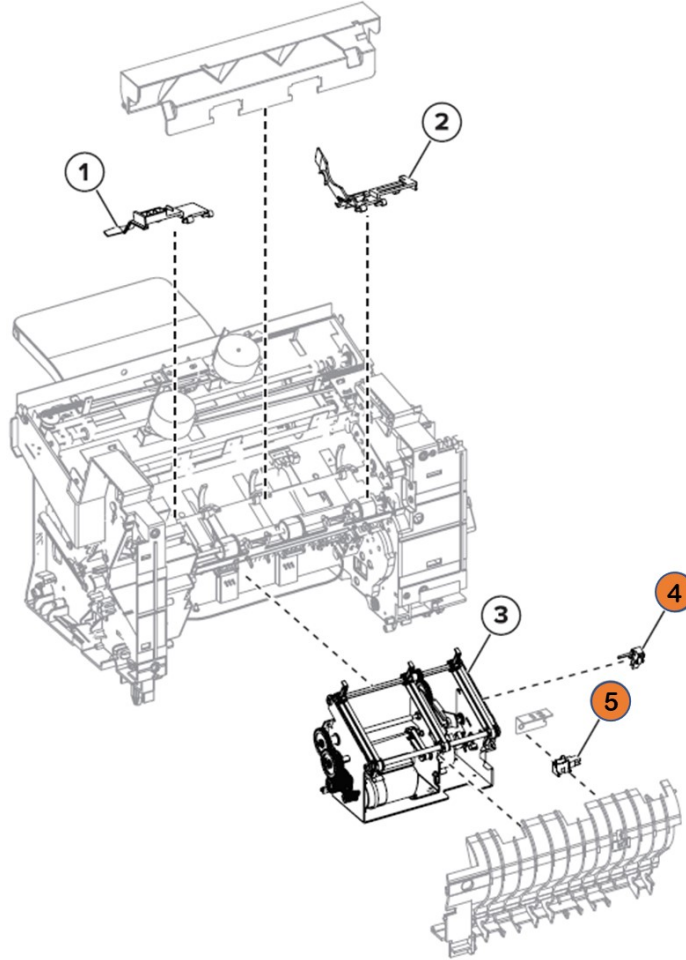


| <b>Index</b> | <b>Description</b>                    |
|--------------|---------------------------------------|
| 8            | Sensor (staple finisher left tamper)  |
| 10           | Sensor (staple finisher right tamper) |

**MS72x/ MS82x and MX72x/ MX82x Series  
Location**

**Brominated Plastic Components**

**Staple finisher 5**

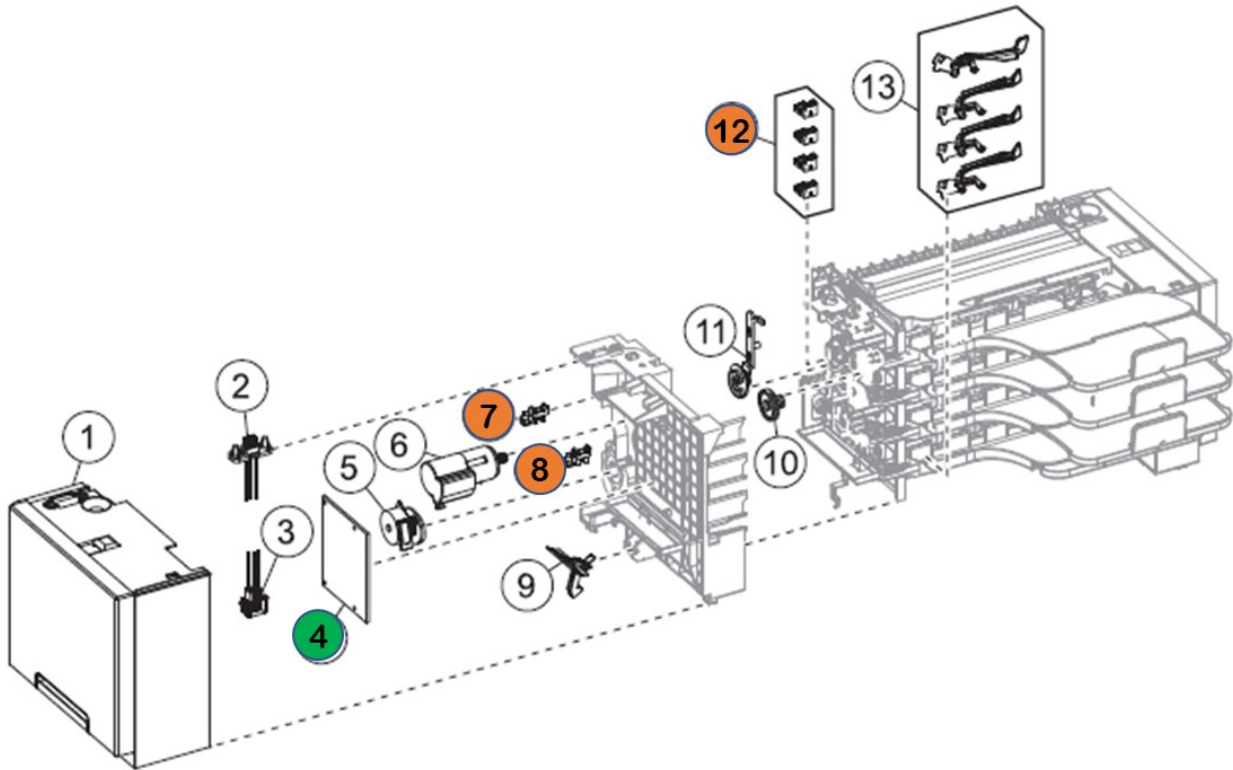


| <b>Index</b> | <b>Description</b>                    |
|--------------|---------------------------------------|
| 4            | Sensor (staple finisher ejector)      |
| 5            | Sensor (staple finisher pass-through) |

**MS72x/ MS82x and MX72x/ MX82x Series  
Location**

**Brominated Plastic Components**

**Mailbox 1**

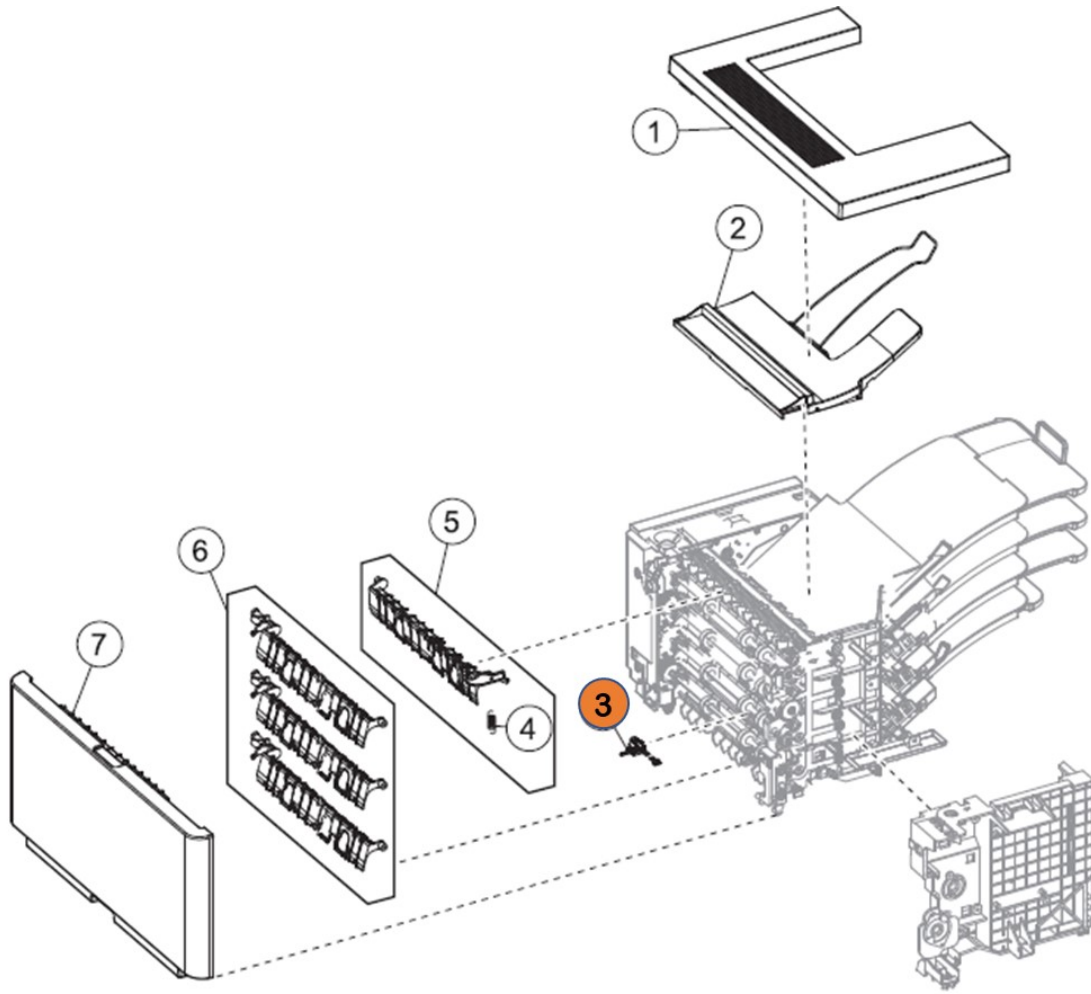


| Index | Description                          |
|-------|--------------------------------------|
| 4     | Mailbox controller board             |
| 7     | Sensor (mailbox rear door interlock) |
| 8     | Sensor (mailbox diverter plunger)    |
| 12    | Sensor (mailbox bin full)            |

**MS72x/ MS82x and MX72x/ MX82x Series  
Location**

**Brominated Plastic Components**

**Mailbox 3**

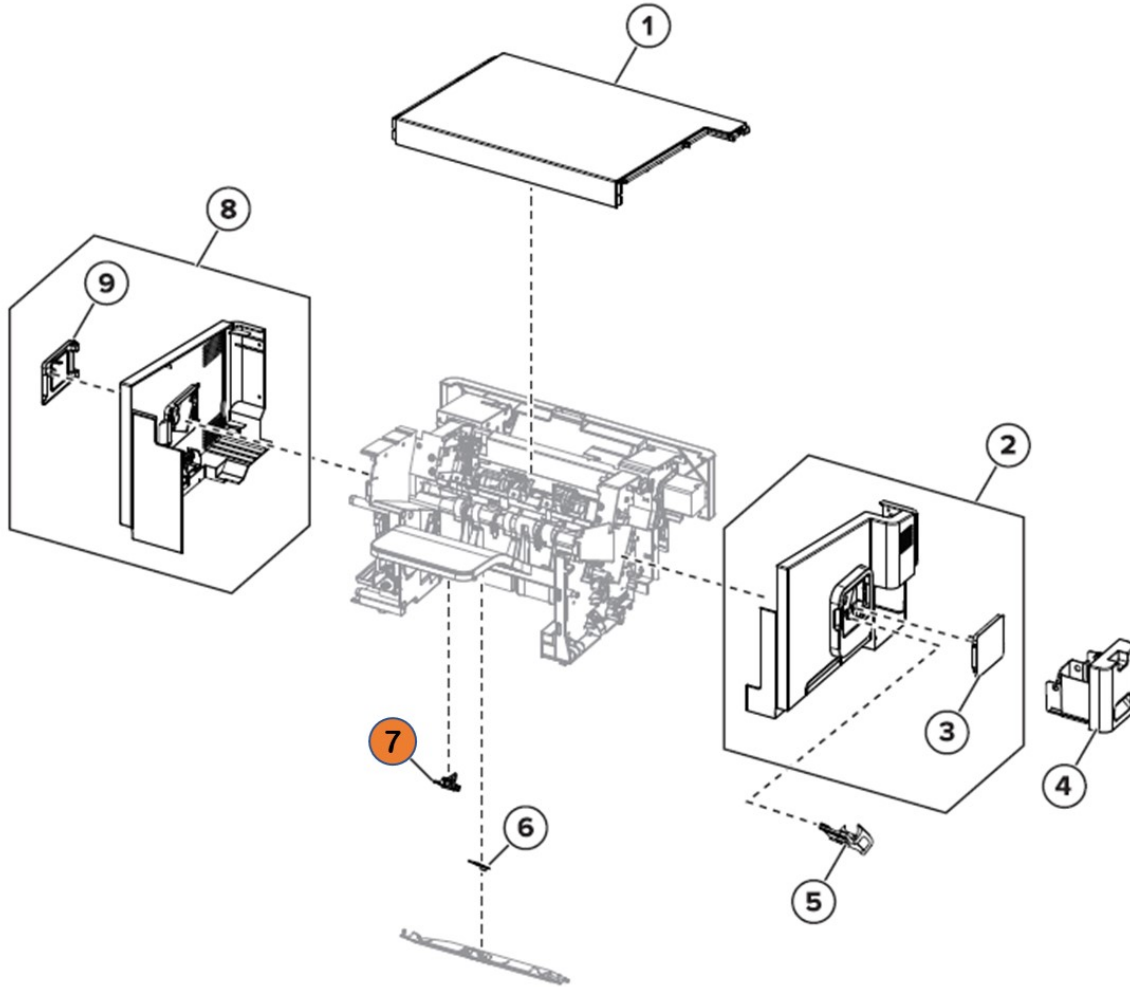


| <b>Index</b> | <b>Description</b>            |
|--------------|-------------------------------|
| 3            | Sensor (mailbox pass-through) |

**MS72x/ MS82x and MX72x/ MX82x Series  
Location**

**Brominated Plastic Components**

**Staple, hole punch finisher 1**

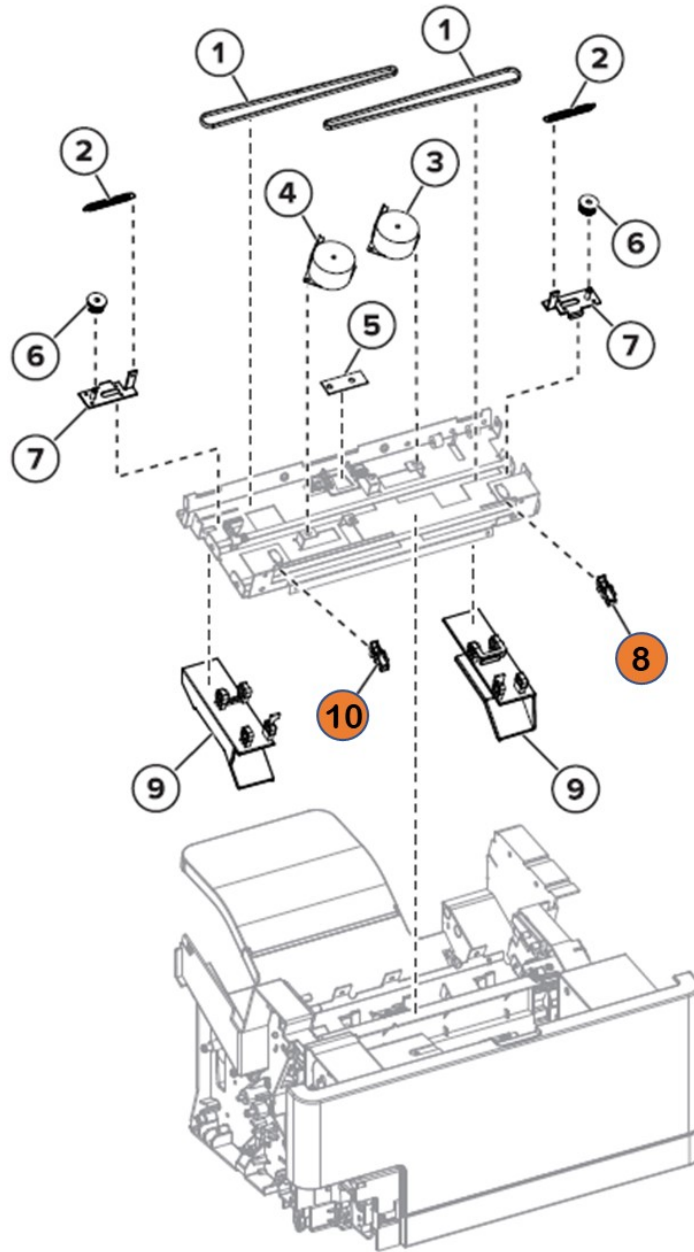


| Index | Description                     |
|-------|---------------------------------|
| 3     | Sensor (SHPF bin paper present) |

**MS72x/ MS82x and MX72x/ MX82x Series  
Location**

**Brominated Plastic Components**

**Staple, hole punch finisher 2**

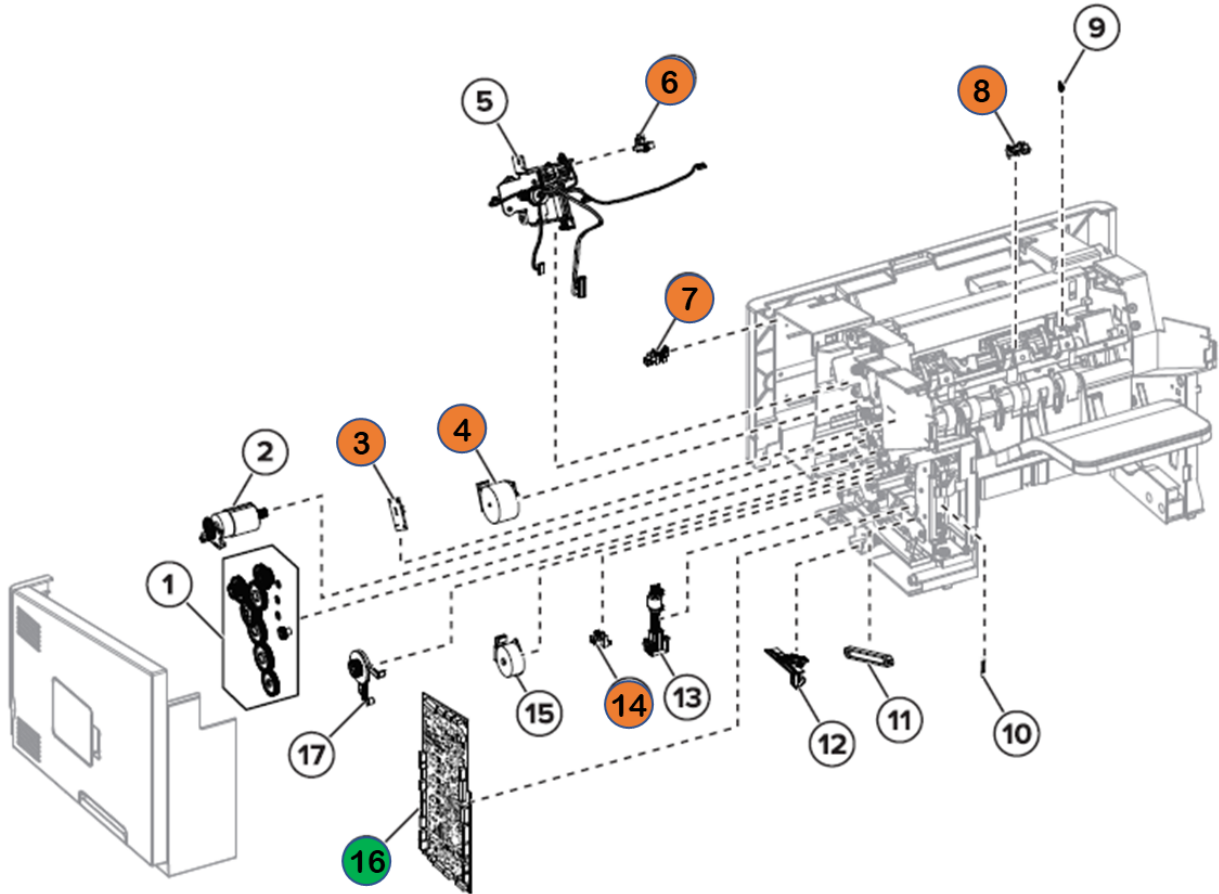


| Index | Description                |
|-------|----------------------------|
| 8     | Sensor (SHPF left tamper)  |
| 10    | Sensor (SHPF right tamper) |

**MS72x/ MS82x and MX72x/ MX82x Series  
Location**

**Brominated Plastic Components**

**Staple, hole punch finisher 3**



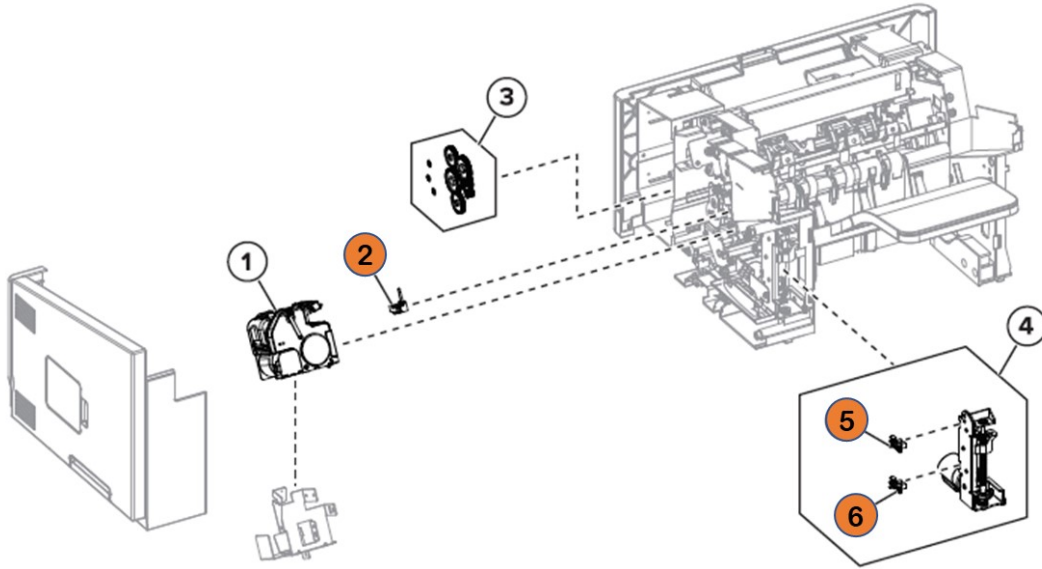
| Index | Description                                  |
|-------|--|
| 3     | Sensor (SHPF bin full)                       |
| 4     | Sensor (SHPF paddle)                         |
| 6     | Sensor (SHPF stack height)                   |
| 7     | Sensor (SHPF rear door interlock)            |
| 8     | Sensor (SHPF paddle)                         |
| 14    | Sensor (SHPF diverter plunger)               |
| 16    | Staple, hole punch finisher controller board |



**MS72x/ MS82x and MX72x/ MX82x Series  
Location**

**Brominated Plastic Components**

**Staple, hole punch finisher 4**

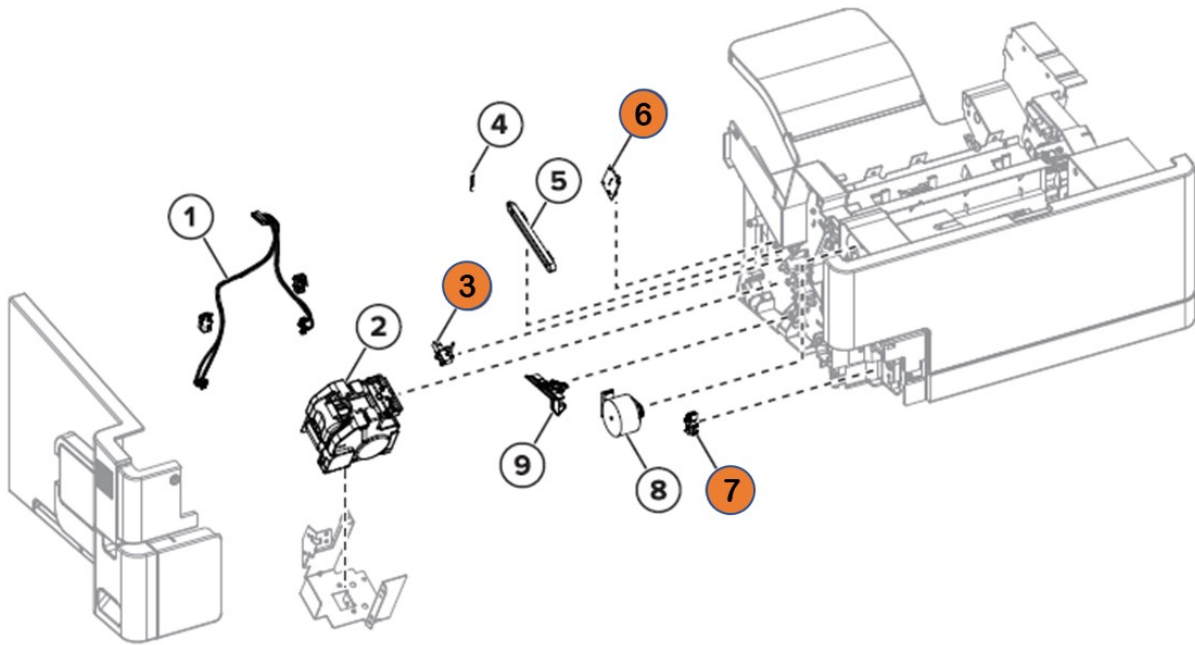


| <b>Index</b> | <b>Description</b>                        |
|--------------|---|
| 2            | Sensor (SHPF staple throat paper present) |
| 5            | Sensor (SHPF elevator, top)               |
| 6            | Sensor (SHPF elevator, bottom)            |

**MS72x/ MS82x and MX72x/ MX82x Series  
Location**

**Brominated Plastic Components**

**Staple, hole punch finisher 5**

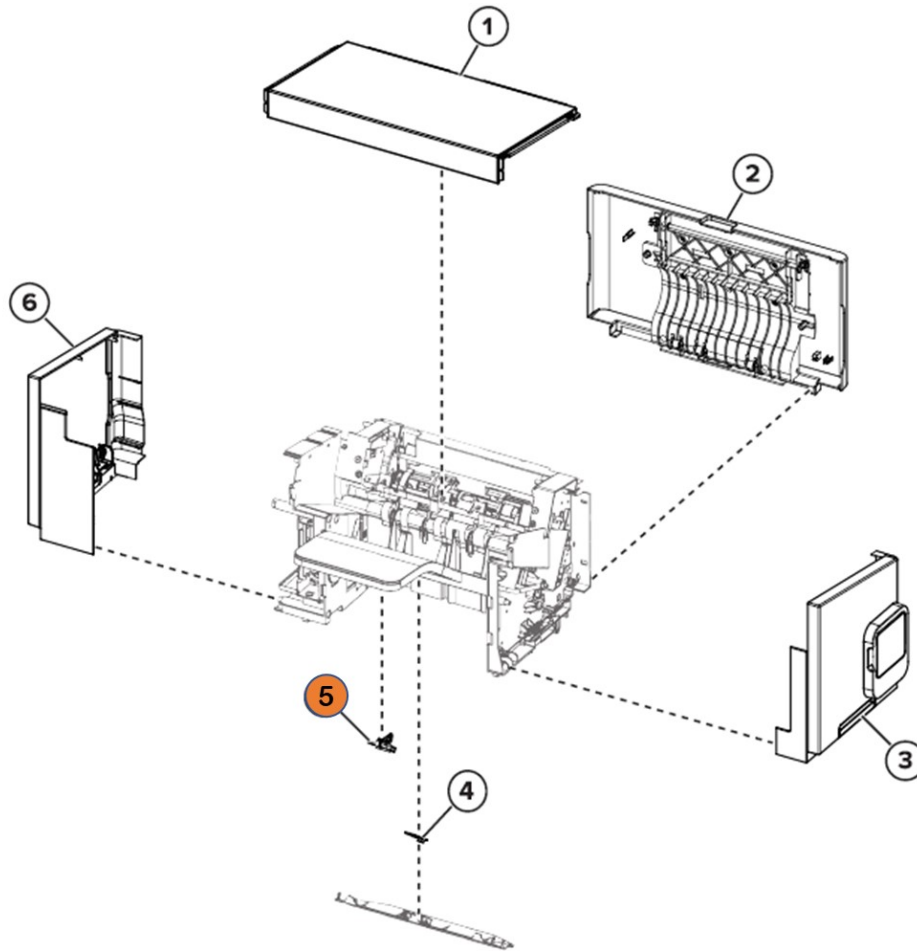


| <b>Index</b> | <b>Description</b>                       |
|--------------|--|
| 3            | Sensor (SHPF staplethroat paper present) |
| 6            | Sensor (bin full)                        |
| 7            | Sensor (hole punch box present)          |

**MS72x/ MS82x and MX72x/ MX82x Series  
Location**

**Brominated Plastic Components**

**Offset stacker 1**

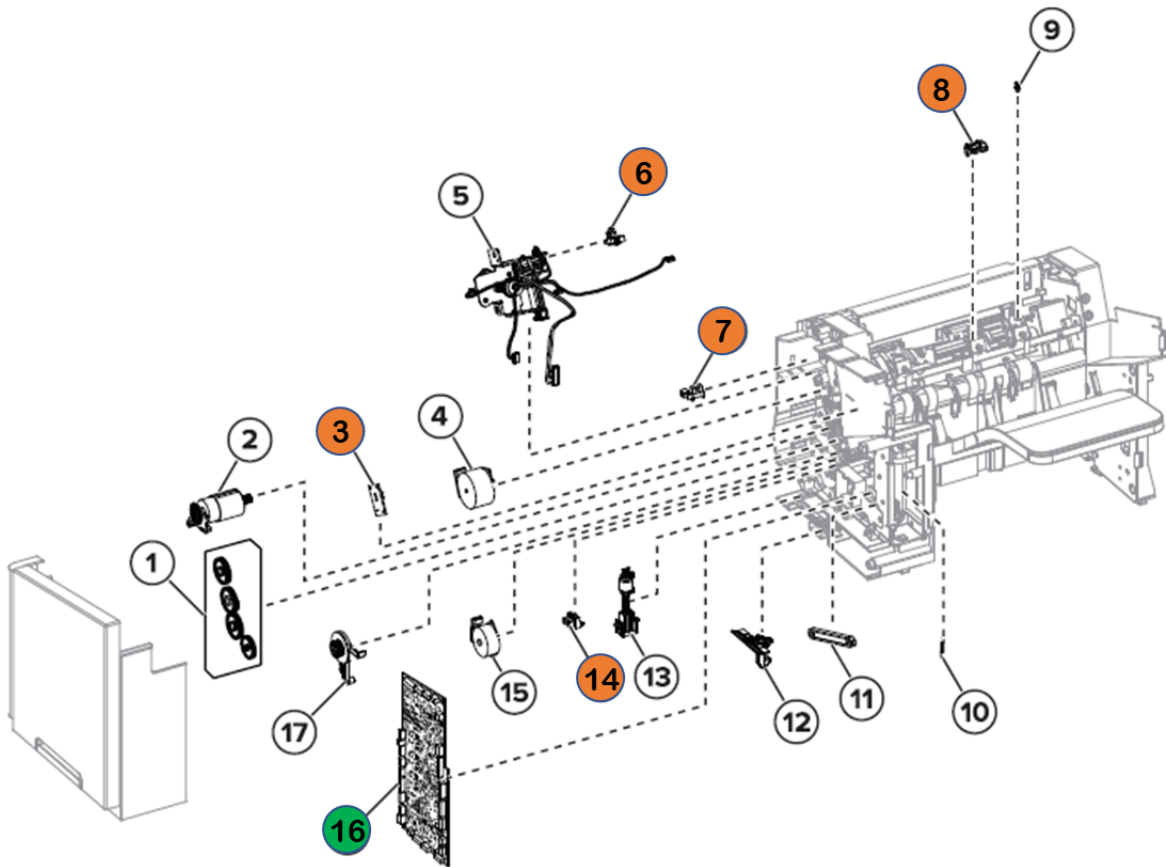


| <b>Index</b> | <b>Description</b>                        |
|--------------|---|
| 5            | Sensor (offset stacker bin paper present) |

**MS72x/ MS82x and MX72x/ MX82x Series  
Location**

**Brominated Plastic Components**

**Offset stacker 2**

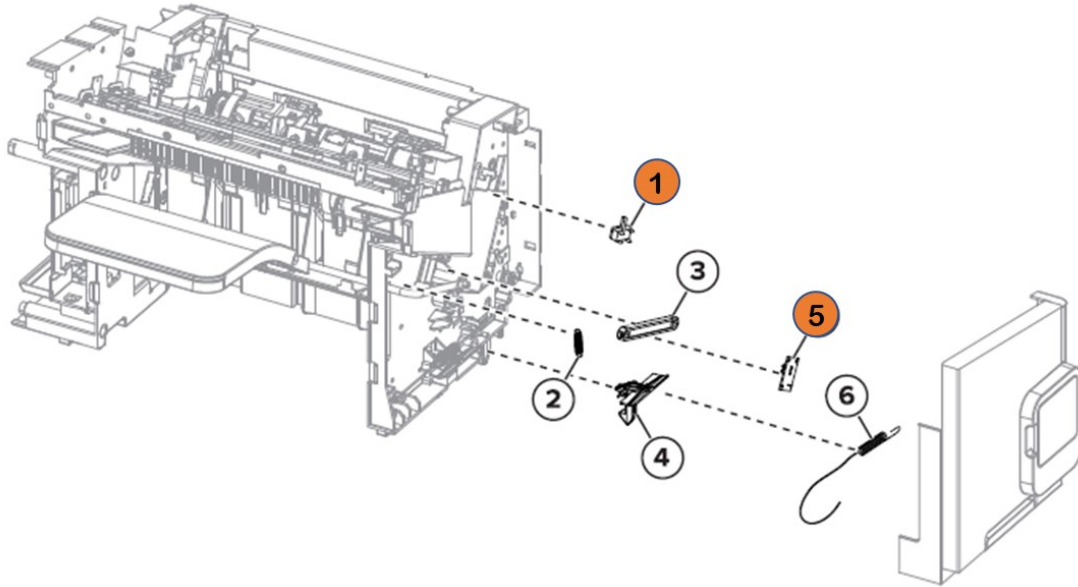


| Index | Description                                 |
|-------|---|
| 3     | Sensor (offset stacker bin full)            |
| 6     | Sensor (offset stacker stack height)        |
| 7     | Sensor (offset stacker rear door interlock) |
| 8     | Sensor (offset stacker paddle)              |
| 14    | Sensor (offset stacker diverter plunger)    |
| 16    | Offset stacker controller board             |

**MS72x/ MS82x and MX72x/ MX82x Series  
Location**

**Brominated Plastic Components**

**Offset stacker 3**

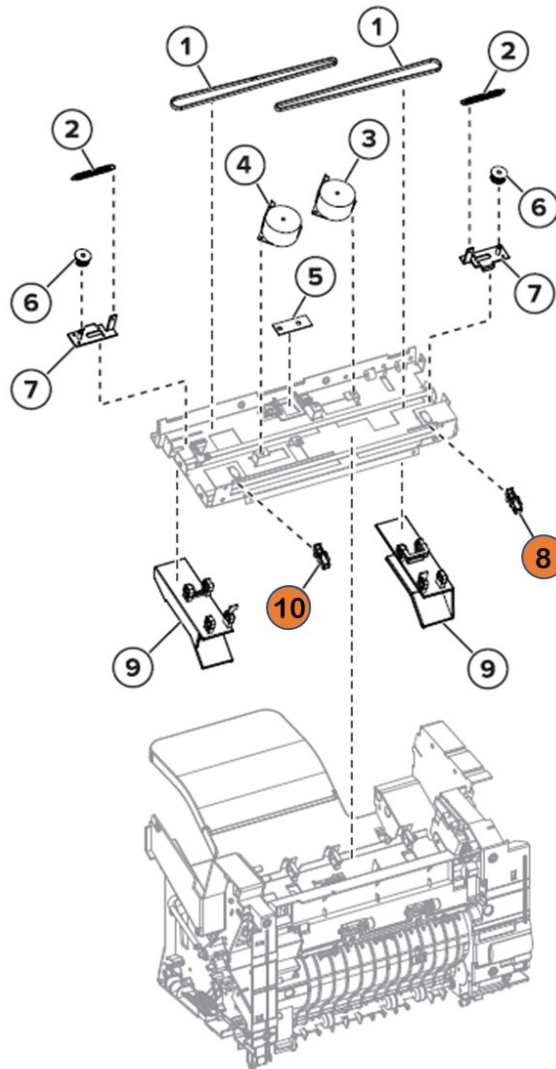


| <b>Index</b> | <b>Description</b>                    |
|--------------|---------------------------------------|
| 1            | Sensor (staple throat paper present)  |
| 5            | Sensor (offset stacker bin full send) |

**MS72x/ MS82x and MX72x/ MX82x Series  
Location**

**Brominated Plastic Components**

**Offset stacker 4**

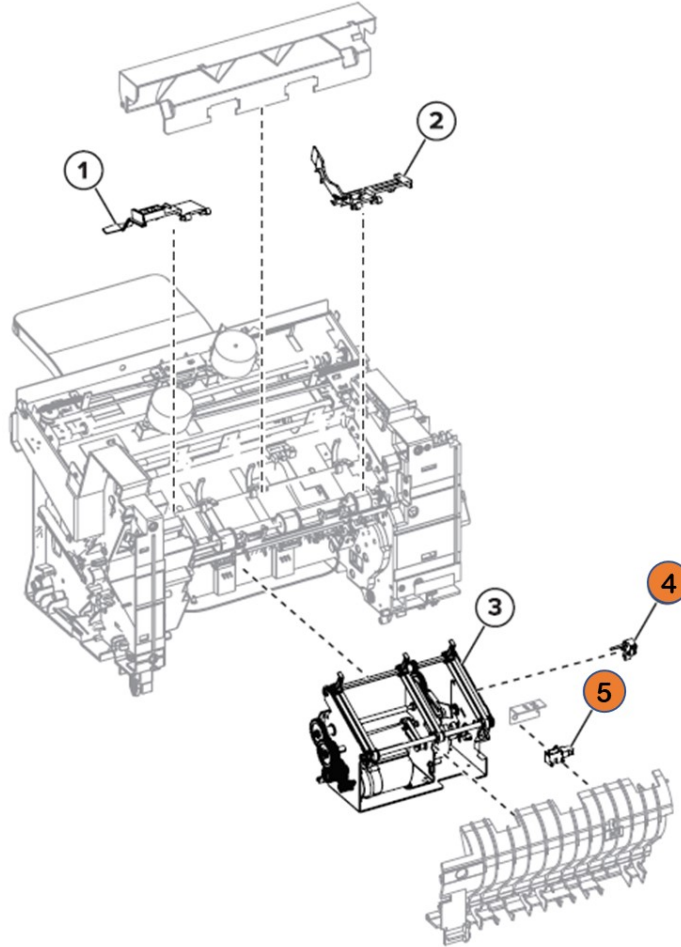


| <b>Index</b> | <b>Description</b>                   |
|--------------|--------------------------------------|
| 8            | Sensor (offset stacker left tamper)  |
| 10           | Sensor (offset stacker right tamper) |

**MS72x/ MS82x and MX72x/ MX82x Series  
Location**

**Brominated Plastic Components**

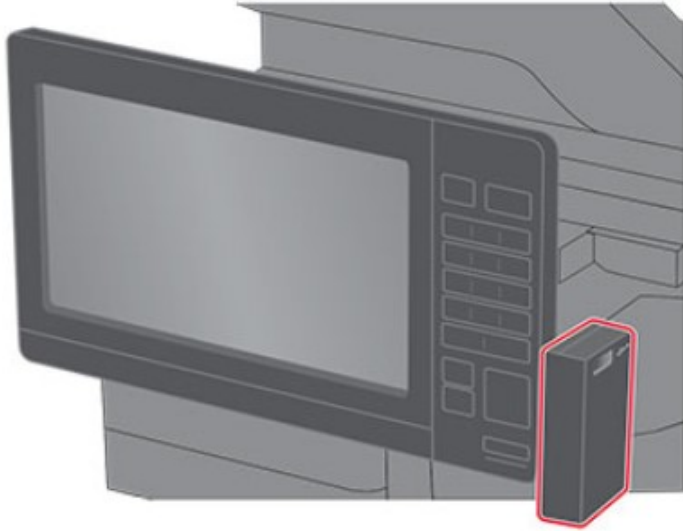
**Offset stacker 5**



| <b>Index</b> | <b>Description</b>                   |
|--------------|--------------------------------------|
| 4            | Sensor (offset stacker ejector)      |
| 5            | Sensor (offset stacker pass-through) |

## MS72x/ MS82x and MX72x/ MX82x Series Location

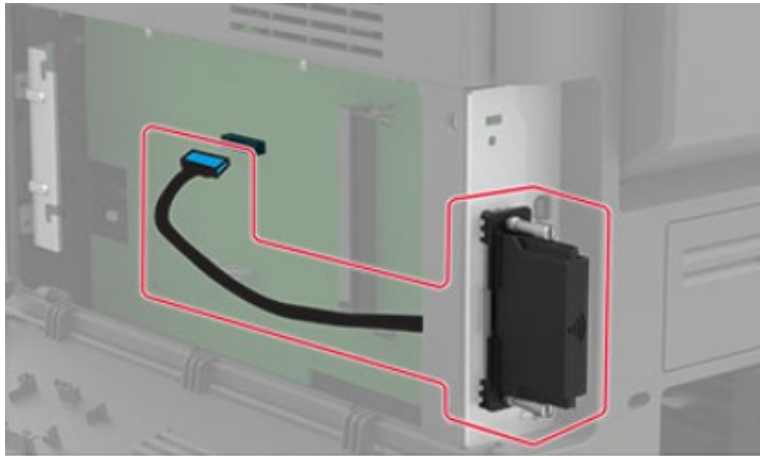
### External Options



Authentication card readers<sup>1</sup>



Keyboard<sup>1</sup>



External Print Servers<sup>2</sup>

**Note 1:** Illustration shows actual options and their typical locations and mounting at the front side of the printer. However, this does not show the actual printer model.

**Note 2:** Illustration shows actual options and their typical locations and mounting at the rear side of the printer. However, this does not show the actual printer model.



## Annex A – Printer components with Brominated Flame Retardants

| Index | Description                              | Parts Marking        | Quantity | Location                      |
|-------|--|----------------------|----------|-------------------------------|
| 1     | 50G2256 – Duct-Middle HR                 | PET-(GF+MD)40 FR(17) | 1        | <a href="#">Covers</a>        |
| 2     | 50G8521 – Lower Exit                     | PA66-GF30 FR(17)     | 1        | <a href="#">Fuser</a>         |
|       | 50G4018 – LOWER EXIT - FUSER             | PET-(GF+MD)40 FR(17) | 1        | <a href="#">Fuser</a>         |
| 3     | 50G8570 – Entry                          | PET-(GF+MD)40 FR(17) | 1        | <a href="#">Fuser</a>         |
|       | 50G4021 – UPPER EXIT - FUSER             | PET-(GF+MD)40 FR(17) | 1        | <a href="#">Fuser</a>         |
| 4     | Fan, 80 mm                               | N/A                  | 1        | <a href="#">Electronics 1</a> |
| 5     | Sensor (toner density)                   | N/A                  | 1        | <a href="#">Electronics 2</a> |
| 6     | Sensor (input)                           | N/A                  | 1        | <a href="#">Electronics 2</a> |
| 7     | Sensor (tray 1 pass-through)             | N/A                  | 1        | <a href="#">Electronics 2</a> |
| 8     | Sensor (tray 1 pick)                     | N/A                  | 1        | <a href="#">Electronics 2</a> |
| 9     | Sensor (front door interlock)            | N/A                  | 1        | <a href="#">Sensors 1</a>     |
| 10    | Sensor (toner cartridge shutter)         | N/A                  | 1        | <a href="#">Sensors 1</a>     |
| 11    | Sensor (duplex interlock)                | N/A                  | 1        | <a href="#">Sensors 1</a>     |
| 12    | Sensor (MPF paper present)               | N/A                  | 1        | <a href="#">Sensors 1</a>     |
| 13    | Sensor (toner smart chip)                | N/A                  | 1        | <a href="#">Sensors 1</a>     |
| 14    | Sensor (toner low)                       | N/A                  | 1        | <a href="#">Sensors 1</a>     |
| 15    | Sensor (standard bin full) with actuator | N/A                  | 1        | <a href="#">Sensors 2</a>     |
| 16    | Sensor (standard bin full)               | N/A                  | 1        | <a href="#">Sensors 2</a>     |
| 17    | Sensor (rear door interlock)             | N/A                  | 1        | <a href="#">Sensors 2</a>     |
| 18    | Sensor (paper size)                      | N/A                  | 1        | <a href="#">Sensors 2</a>     |
| 19    | Sensor (duplex path)                     | N/A                  | 1        | <a href="#">Duplex</a>        |

## Annex B – ADF and Scanner components with Brominated Flame Retardants

| Index | Description                        | Parts Marking | Quantity | Location                          |
|-------|------------------------------------|---------------|----------|-----------------------------------|
| 1     | Sensor (ADF multifeed receiver)    | N/A           | 1        | <a href="#">ADF 4</a>             |
| 2     | Sensor (ADF gap detect)            | N/A           | 1        | <a href="#">ADF 5</a>             |
| 3     | Sensor (ADF deskew)                | N/A           | 1        | <a href="#">ADF 5</a>             |
| 4     | Sensor (ADF multifeed transmitter) | N/A           | 1        | <a href="#">ADF 5</a>             |
| 5     | Sensor (ADF top door interlock)    | N/A           | 1        | <a href="#">ADF 6</a>             |
| 6     | Sensor (ADF bottom door interlock) | N/A           | 1        | <a href="#">ADF 6</a>             |
| 7     | Sensor (ADF 1st scan)              | N/A           | 1        | <a href="#">ADF 6</a>             |
| 8     | Sensor (ADF pick)                  | N/A           | 1        | <a href="#">ADF 6</a>             |
| 9     | Sensor (ADF paper exit)            | N/A           | 1        | <a href="#">ADF 6</a>             |
| 10    | Sensor (ADF closed) with actuator  | N/A           | 1        | <a href="#">ADF 6</a>             |
| 11    | Sensor (ADF closed)                | N/A           | 1        | <a href="#">ADF 6</a>             |
| 12    | Sensor (FB CCDM)                   | N/A           | 1        | <a href="#">Flatbed scanner 2</a> |

## Annex C – Paper handling options components with Brominated Flame Retardants

| Index | Description                           | Parts Marking | Quantity | Location  |
|-------|---------------------------------------|---------------|----------|---|
| 1     | 250 Sheet Tray Option                 | N/A           | 5        | <a href="#">250/ 550 Sheet Tray Option</a>        |
| 2     | 550 Sheet Tray Option                 | N/A           | 5        | <a href="#">250/ 550 Sheet Tray Option</a>        |
| 3     | 2100 Sheet Tray Option sensors        | N/A           | 5        | <a href="#">2100 Sheet Tray Option 3</a>          |
| 4     | Output expander sensors               | N/A           | 4        | <a href="#">Output expander 1,3-4</a>             |
| 5     | High capacity output expander sensors | N/A           | 4        | <a href="#">High capacity output expander 1-2</a> |
| 6     | Staple finisher sensors               | N/A           | 12       | <a href="#">Staple finisher 1-5</a>               |
| 7     | Mailbox sensors                       | N/A           | 4        | <a href="#">Mailbox 1,3</a>                       |
| 8     | Staple, hole punch finisher sensors   | N/A           | 15       | <a href="#">Staple, hole punch finisher 1-5</a>   |
| 9     | Offset stacker sensors                | N/A           | 12       | <a href="#">Offset stacker 1-5</a>                |

## Annex D – Printer, ADF and Scanner Printed Circuit Boards >10cm<sup>2</sup>

| Index | Description                         | Quantity | Location                                     | MS72x/<br>MS82x | MX72x/<br>MX82x |
|-------|-------------------------------------|----------|--|-----------------|-----------------|
| 1     | 2.4in Control panel board           | 1        | <a href="#">MS Series Control plane</a>      | X               |                 |
|       | 4.3in Control panel board           | 1        | <a href="#">MS Series Control plane</a>      | X               |                 |
|       | 7in Control panel board             | 1        | <a href="#">MX Series Control plane</a>      |                 | X               |
|       | 10.1in Control panel board          | 1        | <a href="#">MX Series Control plane</a>      |                 | X               |
| 2     | Hot roll fuser card                 | 1        | <a href="#">Fuser</a>                        | X               | X               |
|       | Belt fuser card                     | 1        | <a href="#">Fuser</a>                        | X               | X               |
| 3     | Printhead board within the assembly | 1        | <a href="#">Electronics 1</a>                | X               | X               |
| 4     | Controller board                    | 1        | <a href="#">Electronics 1</a>                | X               | X               |
| 5     | HVPS                                | 1        | <a href="#">Electronics 1</a>                | X               | X               |
| 6     | LVPS                                | 1        | <a href="#">Electronics 2</a>                | X               | X               |
| 7     | Fax card                            | 1        | <a href="#">Attached to Controller board</a> |                 | X               |
| 8     | HDD card                            | 1        | <a href="#">Attached to Controller board</a> | X               | X               |
| 9     | ADF scanner CCD board               | 1        | <a href="#">ADF 4</a>                        |                 | X               |
| 10    | Motor (ADF)                         | 1        | <a href="#">ADF 4</a>                        |                 | X               |
| 11    | ADF controller board                | 1        | <a href="#">ADF 4</a>                        |                 | X               |
| 12    | Flatbed scanner CCDM board          | 1        | <a href="#">Flatbed scanner 3</a>            |                 | X               |

## Annex E – Paper handling options Printed Circuit Boards >10cm<sup>2</sup>

| Index | Description                                  | Quantity | Location   | MS72x/<br>MS82x | MX72x/<br>MX82x |
|-------|--|----------|--|-----------------|-----------------|
| 1     | 250 Tray Controller board                    | 1        | <a href="#"><u>250/ 550 Sheet Tray Option</u></a>      | X               | X               |
| 2     | 550 Tray Controller board                    | 1        | <a href="#"><u>250/ 550 Sheet Tray Option</u></a>      | X               | X               |
| 3     | 2100-sheet tray controller board             | 1        | <a href="#"><u>2100 Sheet Tray Option 2</u></a>        | X               | X               |
| 4     | Output expander controller board             | 1        | <a href="#"><u>Output expander 1</u></a>               | X               |                 |
| 5     | HCOE controller board                        | 1        | <a href="#"><u>High capacity output expander 1</u></a> | X               |                 |
| 6     | Staple finisher controller board             | 1        | <a href="#"><u>Staple finisher 2</u></a>               | X               | X               |
| 7     | Mailbox controller board                     | 1        | <a href="#"><u>Mailbox 1</u></a>                       | X               | X               |
| 8     | Staple, hole punch finisher controller board | 1        | <a href="#"><u>Staple, hole punch finisher 3</u></a>   | X               | X               |
| 9     | Offset stacker controller board              | 1        | <a href="#"><u>Offset stacker 2</u></a>                |                 | X               |

## Annex F – Electrical and Electronic (EE) Customer Replaceable Paper Handling Devices

| Index | PN   | Description   | Locations                              | MS72x<br>MS82x | MX72x | MX82x |
|-------|--|---|--|----------------|-------|-------|
| 1     | 41X1695  | Output expander   | <a href="#">Paper handling options</a> | X              |       |       |
| 2     | 41X1696  | High capacity output expander   |  | X              |       |       |
| 3     | 41X1691  | Stapler   |  |                |       | X     |
| 4     | 41X1692  | Offset stacker  |  |                |       | X     |
| 5     | 41X1693  | Staple, hole punch  |  | X              |       | X     |
| 6     | 41X1694  | 4-bin mailbox   |  | X              |       | X     |
| 7     | 41X1658  | MS82x 550-sheet   |  | X              |       |       |
| 8     | 41X1669  | MS82x 2100-sheet  |  | X              |       |       |
| 9     | 41X2177  | 250-sheet lockable  |  | X              | X     |       |
| 10    | 41X1649  | 250-sheet   |  | X              | X     |       |
| 11    | 41X2179  | 550-Sheet lockable tray   |  | X              | X     | X     |
| 12    | 41X1663  | MX82x 550-sheet   |  |                |       | X     |
| 13    | 41X1671  | MX82x 2100-sheet  |  |                | X     | X     |
| 14    | 41X2243<br>41X2245<br>41X2234<br>41X2237<br>41X2239<br>41X2251 | Maintenance Kit – Only Hot Roll Fuser/ Belt Fuser are considered EE units | <a href="#">Fuser</a>                  | X              | X     | X     |

## Annex G – Electrical and Electronic (EE) Customer Replaceable Internal/ External Card Options

| Index | PN  | Description  | Locations                                       | MS72x<br>MS82x | MX72x | MX82x |
|-------|---|--|---|----------------|-------|-------|
| 1     | 57X9801<br>27X0400<br>27X0500<br>57X0204            | Flash memory   | Attached to<br><a href="#">Controller board</a> | X              | X     | X     |
| 2     | 57X9810<br>57X9812<br>57X9814<br>57X9815            | Font cards   |   | X              | X     | X     |
| 3     | 40C9200<br>40C9201<br>40C9201                       | Firmware cards<br>(Forms and Bar code,<br>Prescribe, IPDS) |   | X              | X     | X     |
| 4     | 14F0100<br>14F0000<br>27X0142                       | Internal solutions port<br>(Interface cards)               |   | X              | X     | X     |
| 5     | 57X0185   | Security card  |   | X              | X     | X     |
| 6     | 27X6510<br>27X6410                                  | External print server                                      | <a href="#">External print servers</a>          | X              | X     | X     |
| 7     | 57X7040<br>57X7030                                  | Keyboard   | <a href="#">Keyboard</a>                        |                |       | X     |
| 8     | 57X0300<br>57X0301                                  | Authentication card<br>readers                             | <a href="#">Authentication card readers</a>     |                | X     | X     |
| 9     | 41X2243<br>41X2234<br>41X2237<br>41X2239<br>41X2251 | Maintenance kit<br>(Fuser only)                            | <a href="#">Fuser</a>                           | X              | X     | X     |