

## Disassembly of Waste Electrical and Electronic Equipment (WEEE) Manual

EU Waste Electronic and Electrical Equipment Directive require producers to provide information of the different electronic and electrical materials and components found in their products at its end-of-life, and disassembly references to treatment and recycling facilities.

This document communicates, according to the best of Lexmark's knowledge, the following information that is intended only for the use of treatment and recycling facilities:

1. Product information
2. Materials and components list for selective treatment
3. Disassembly tools
4. Disassembly references

### 1. Product information

**Model name(s)**—Indicate all model name(s) within the product family

Model name
<b>MS910de</b>
<b>MX910de Series –</b> MX910de, MX910dxe
<b>MX911 Series –</b> MX911de, MX911dte
<b>MX912 Series –</b> MX912de, MX912dxe, XM9145, XM9155, XM9165

*\* Add rows as needed*

### 2. Materials and components list for selective treatment

Items	Quantity	Notes
Polychlorinated biphenyls (PCB) containing capacitors	0	N/A
Mercury containing components, such as switches or backlighting lamps	0	N/A
Batteries	1	Lithium Manganese Dioxide coin cell – Controller board, See Page 8)
Printed circuit boards greater than 10 cm <sup>2</sup>	-	17 for MX91x 13 for MS91x See Annex B, Page 32  1 for every Option: 2x500-Sheet tray, 3000-Sheet tray, 2500-Sheet tray, SHPF, Booklet maker  2 for Staple Finisher



Toner cartridges, liquid and pasty, as well as colour toner	2	1 Toner cartridge 1 Waste toner bottle
Plastic containing brominated flame retardants	84	5 Fans, See Pages 5-9 38 Sensors, See Pages 41 Brominated plastic parts marked with recycle codes "FR17" See Appendix A, Page 24
Asbestos waste and components which contain asbestos	0	N/A
Cathode ray tubes	0	N/A
Chlorofluorocarbons (CFC), Hydrochlorofluorocarbons (HCFC) or Hydrofluorocarbons (HFC), Hydrocarbons (HC)	0	N/A
Gas discharge lamps	0	N/A
Liquid Crystal Display (LCD) greater than 100 cm <sup>2</sup> and those back-lighted with Gas discharge lamps	1	1 Control Panel, See Page 4
External electrical cables	1	Power cable – Rear side of the device
Components containing refractory fibres	0	N/A
Components containing radioactive substances	0	N/A
Electrolyte capacitors containing substances of concern <sup>1</sup>	0	N/A
<sup>1</sup> With (height > 25 mm, diameter > 25 mm or proportionately similar volume)		

### 3. Disassembly tools

Item
#2 Phillips screwdriver, magnetic
Wire cutter
E-clip puller or a small flat-head screwdriver

### 4. Disassembly references

#### 4.1. Removal Procedures



MS91x and MX91x Series WEEE removal

WEEE materials and components removal procedures are available upon request.

Contact: [recycling@lexmark.com](mailto:recycling@lexmark.com)

#### 4.2. Graphical illustration of material's and component's location

See next page



## **MS91x and MX91x SERIES Location**

### **Toner cartridge bottle (Top front door)**



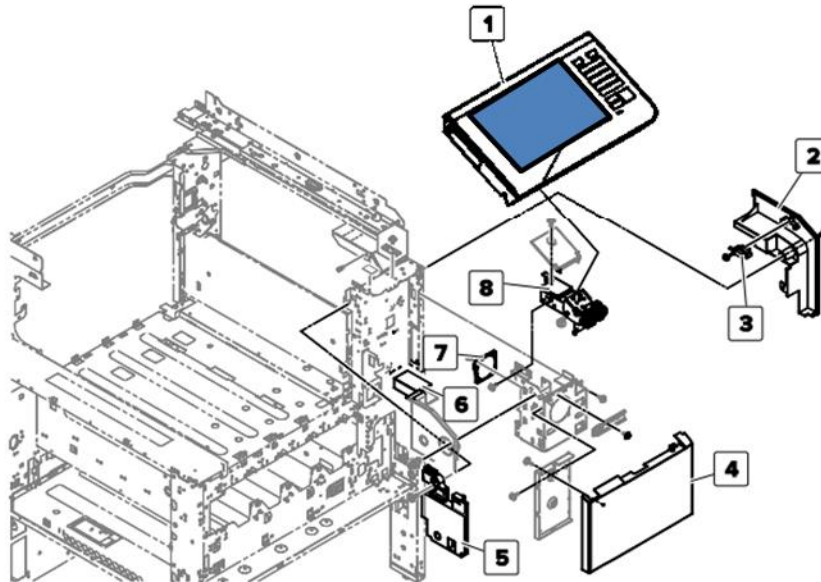
### **Waste toner bottle (Bottom front door)**





## MS91x and MX91x SERIES Location

### Op Panel

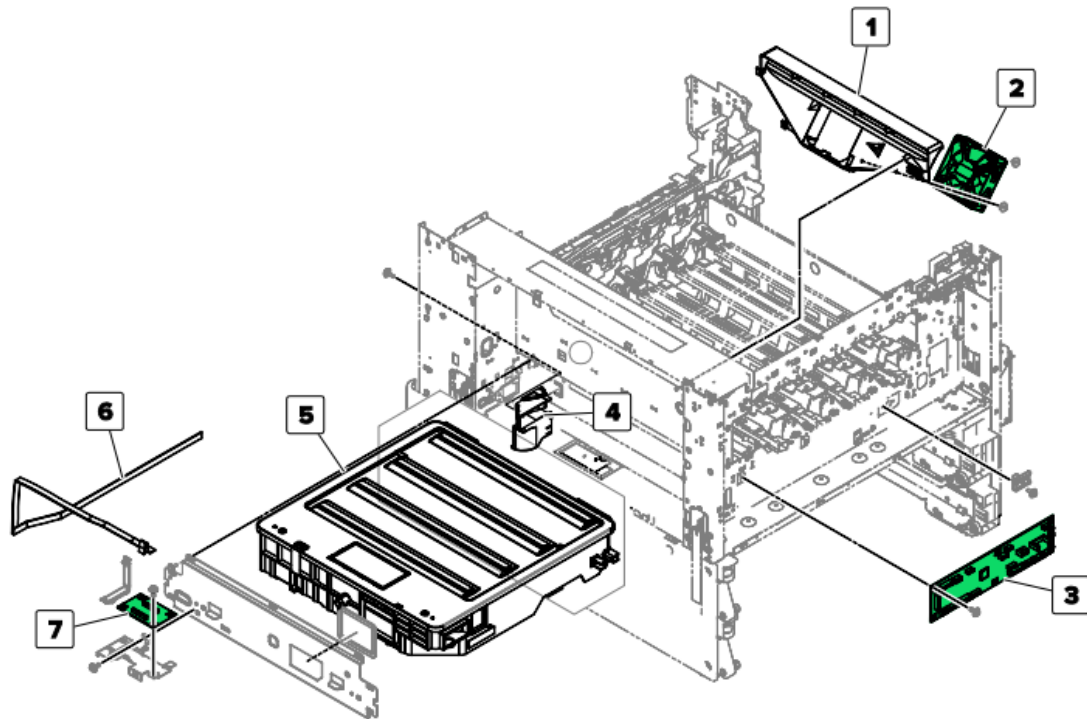


Index	Description
1	Control panel
2	USB port cover
3	USB extension cover
4	Speaker cover
5	Control panel cable guide lower cover
6	Control panel cable guide upper cover
7	Speaker
8	Control panel hinge



## MS91x and MX91x SERIES Location

### Printhead

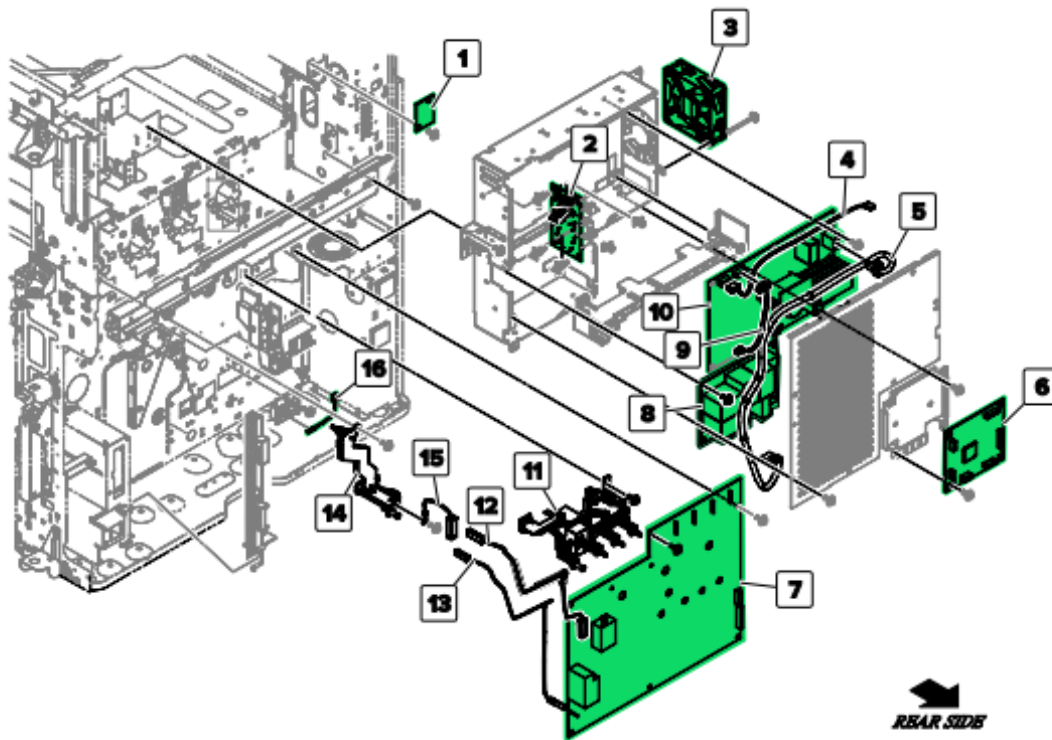


Index	Description
1	Transfer belt fan duct
2	Transfer belt fan
3	Image controller board
4	Ozone filter duct
5	Printhead (MFP)
6	Printhead FFC
7	Printhead relay board



## MS91x and MX91x SERIES Location

### High Voltage

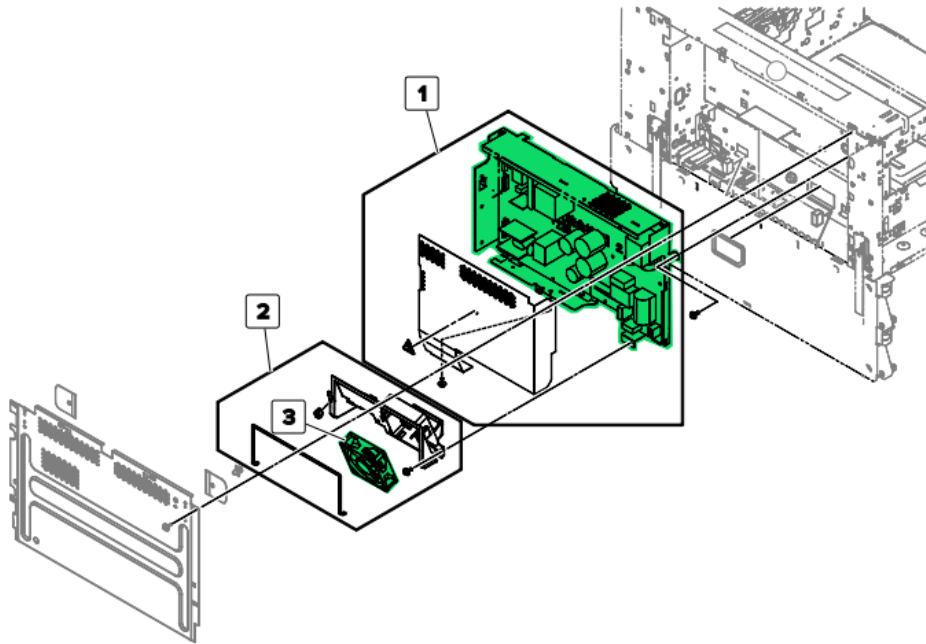


Index	Description
1	Power-saving board
2	Induction heater magnetic erase board
3	Fuser power supply fan
4	Induction heater power supply cable
5	Noise filter board cable
6	Expansion controller board
7	High voltage board
8	Noise filter board, 100 V
8	Noise filter board, 230 V
9	Induction heater magnetic erase board cable
10	Induction heater power supply, 100 V
10	Induction heater power supply, 230 V
11	High voltage developer contact
12	High voltage transfer cable
13	High voltage charge cable
14	High voltage charge contact
15	High voltage toner charge cable
16	Sensor (tray 1 and 2 paper temperature)



## MS91x and MX91x SERIES Location

### Main Power Supply

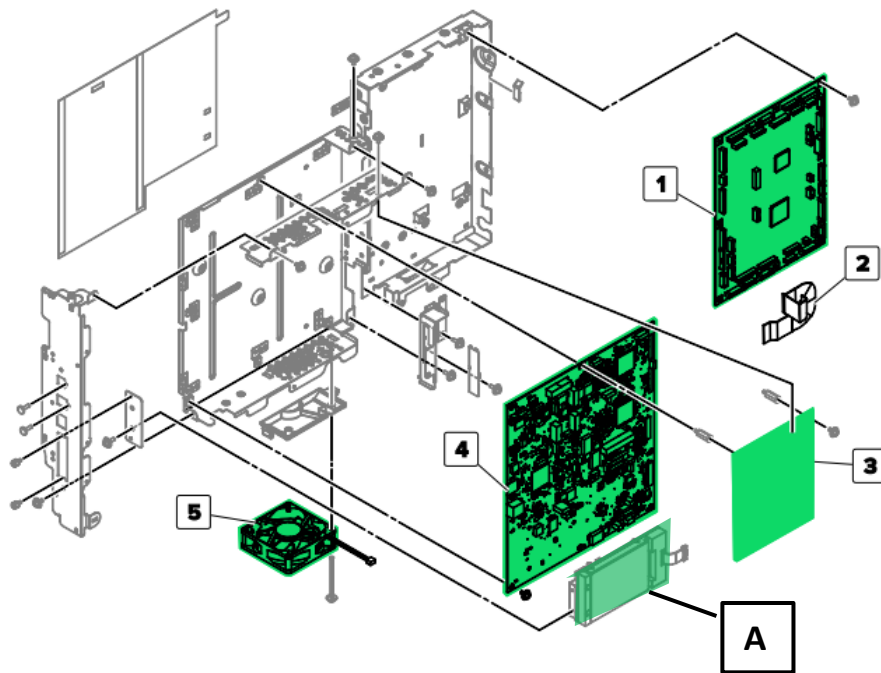


Index	Description
1	Main power supply, 100 V
1	Main power supply, 230 V
2	Main power supply fan with duct
3	Main power supply fan



## MS91x and MX91x SERIES Location

### Electrical 2

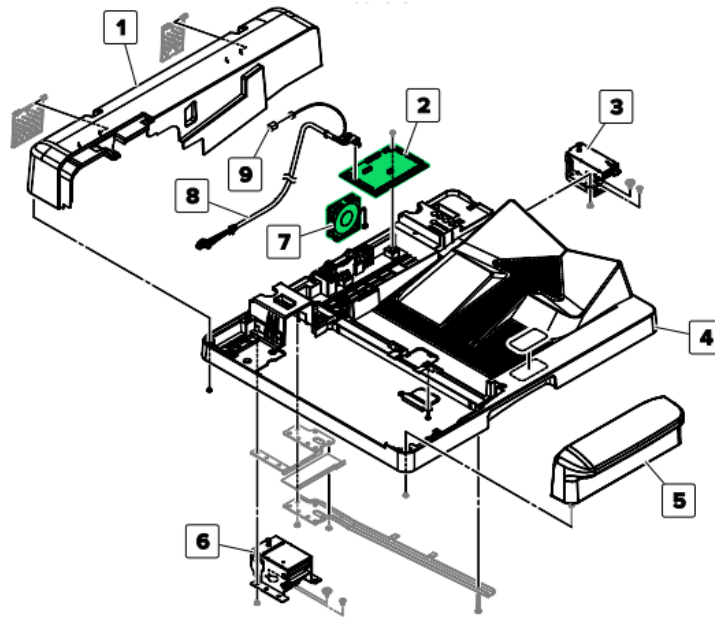


Index	Description
1	Engine controller board
3	ADF/scanner controller board
4	Controller board, MFP/ SFP
5	Controller board fan
A	Hard drive



## MX91x SERIES Location

### ADF Covers 1

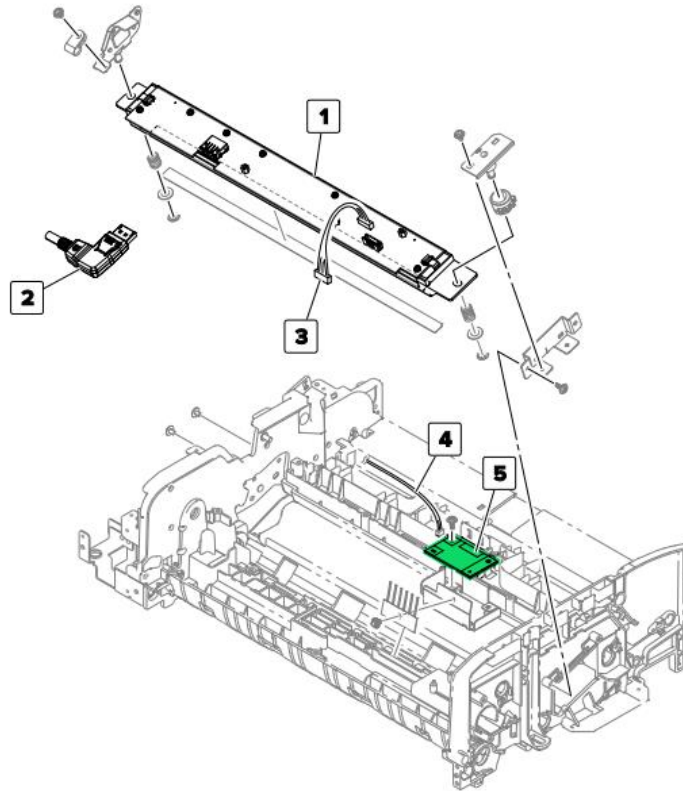


Index	Description
1	ADF rear cover
2	ADF controller board
3	ADF Right hinge
4	ADF frame
5	ADF front Cover
6	ADF Left hinge
7	ADF fan
8	ADF CIS cable
9	ADF sensor cable



## MX91x SERIES Location

### ADF CIS 1

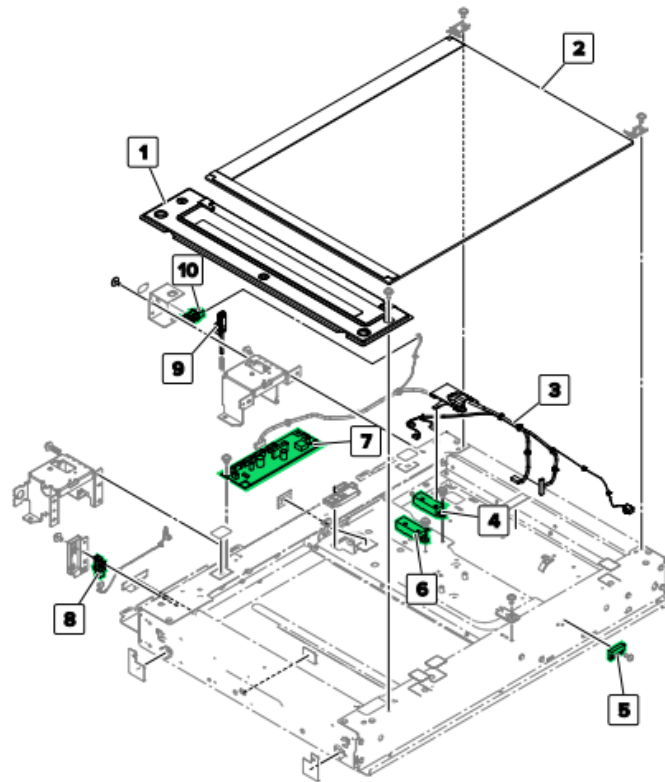


Index	Description
1	ADF CIS assembly
2	ADF CIS data cable
3	ADF CIS power supply cable
4	ADF CIS power supply board cable
5	ADF CIS power supply board



## MX91x SERIES Location

### Flatbed Scanner

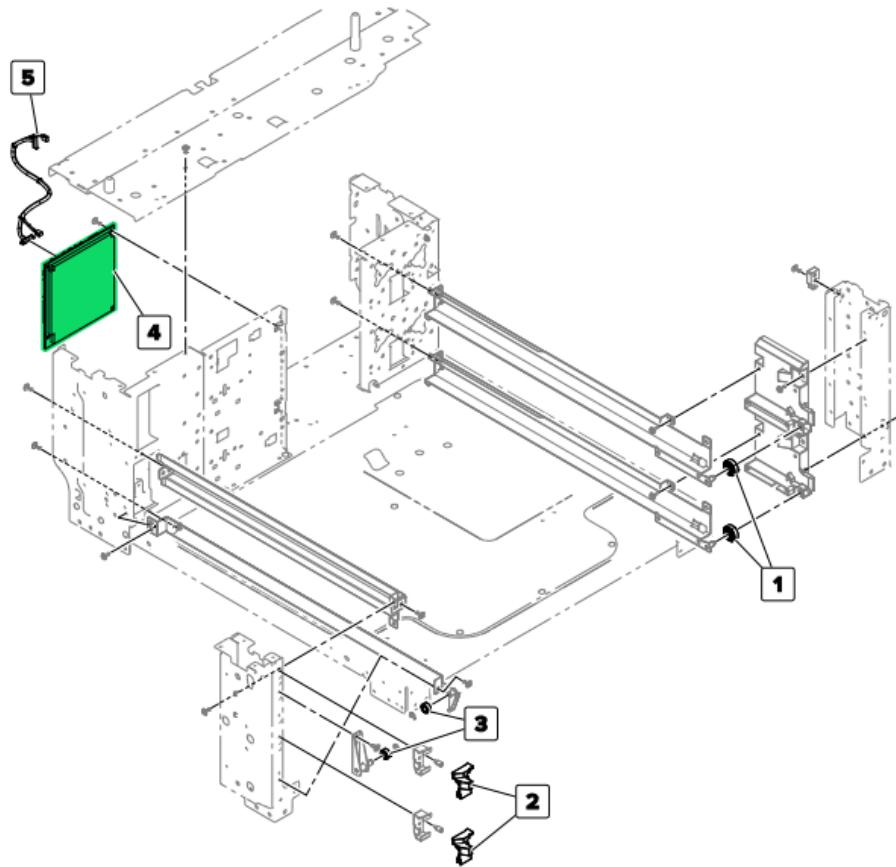


Index	Description
1	ADF duplex scan glass
2	Scanner glass
3	Scanner sensor cable
4	Sensor (scanner paper length 1)
5	Sensor (scanner cover switch)
6	Sensor (scanner paper length 2)
7	Scanner controller board
8	Sensor (scanner lamp home)
9	Scanner cover open sensor actuator
10	Sensor (scanner cover open)



## MS91x and MX91x Options Location

### 2 x 500-Sheet Tray

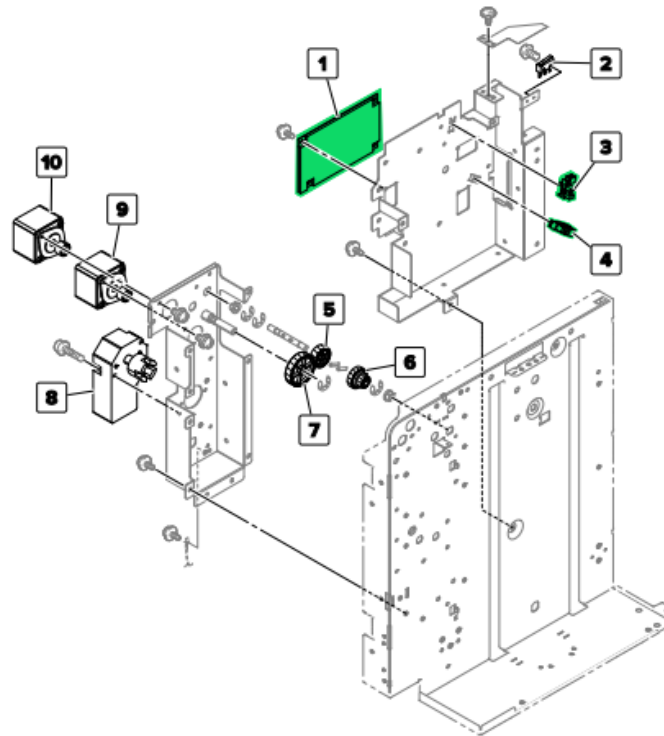


Index	Description
1	2 x 500-sheet tray right rail guide wheel
2	2 x 500-sheet tray insert stopper
3	2 x 500-sheet tray left rail guide wheel
4	2 x 500-sheet tray controller board
5	2 x 500-sheet tray interface cable



## MS91x and MX91x Options Location

### 3000-Sheet Tray

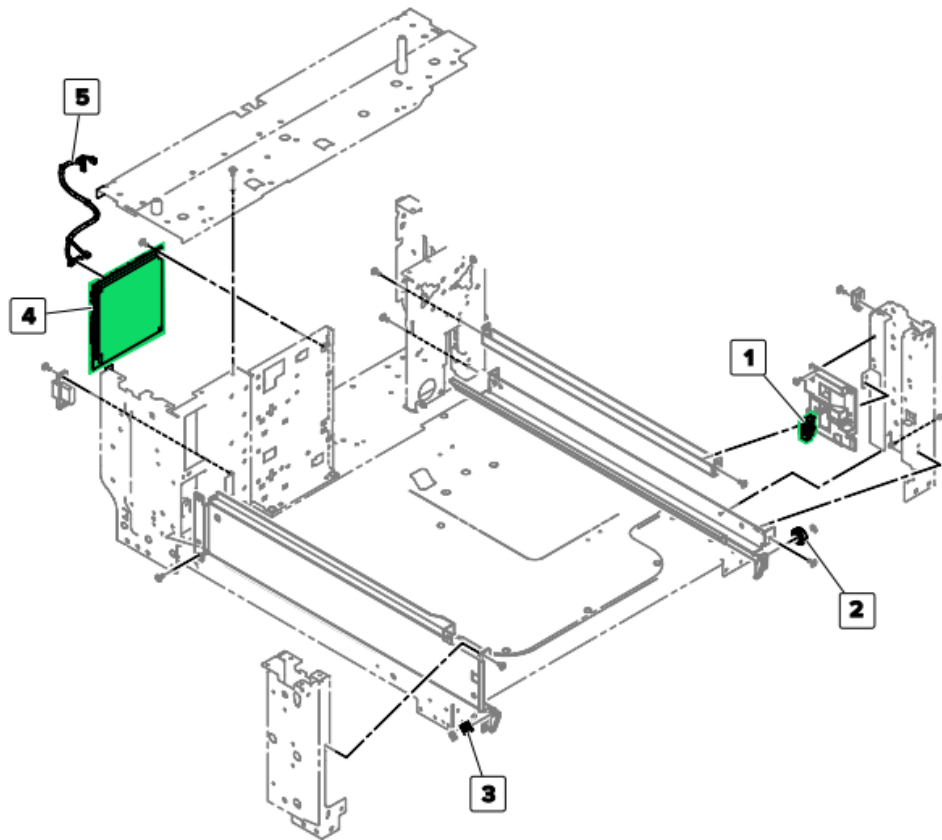


Index	Description
1	3000-sheet tray controller board
2	3000-sheet tray door switch
3	Sensor (3000-sheet tray near empty 1)
4	Sensor (3000-sheet tray near empty 2)
5	3000-sheet tray feed motor idler gear
6	3000-sheet tray feed and pick idler gear
7	3000-sheet tray feed motor gear
8	Motor (3000-sheet tray elevator)
9	Motor (3000-sheet tray feed)
10	Motor (3000-sheet tray transport)



## MS91x and MX91x Options Location

### 2500-Sheet Tray

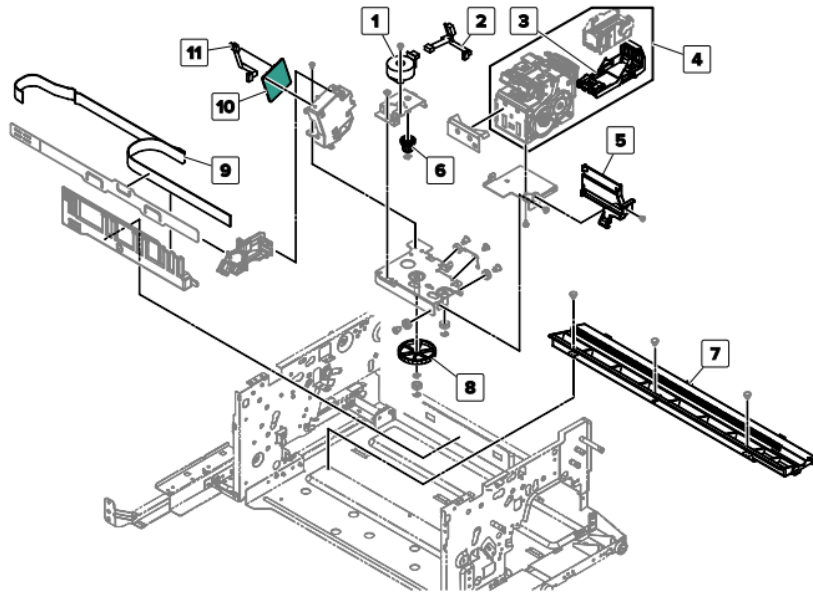


Index	Description
1	Sensor (2500-sheet tray set)
2	Tray rail guide wheel
3	Tray insert guide wheel
4	2500-sheet tray controller board
5	2500-sheet tray interface cable

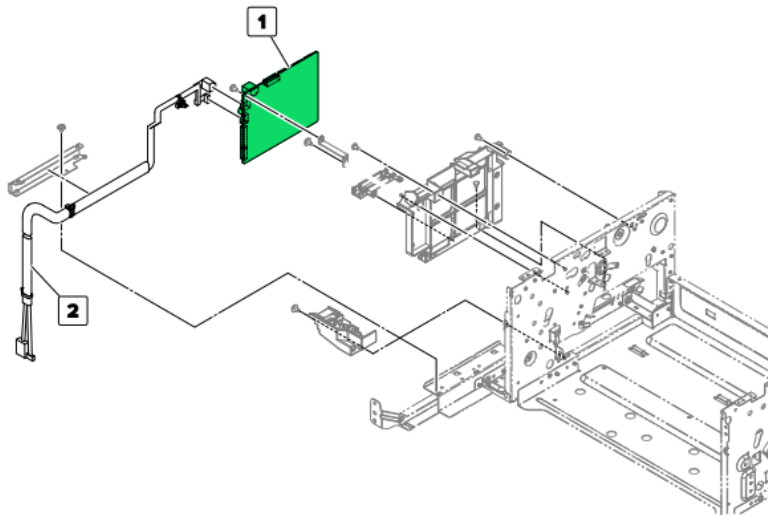


## MS91x and MX91x Options Location

### Stapler Finisher



Index	Description
1	Motor (staple finisher staple unit carriage)
2	Staple finisher staple unit cable
3	Staple cartridge holder
4	Staple finisher staple unit
5	Staple finisher staple unit holder
6	Staple finisher staple unit carriage drive gear
7	Staple finisher staple unit rail
8	Staple finisher staple unit carriage gear
9	Staple finisher FFC
10	Staple finisher interface board
11	Staple finisher staple unit carriage motor cable

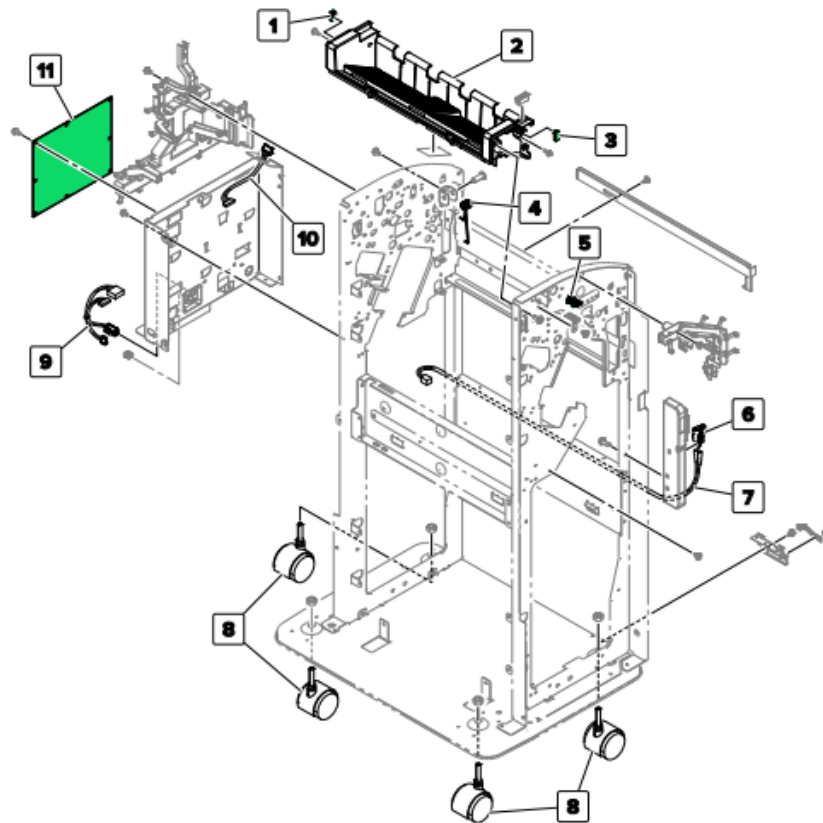


Index	Description
1	Staple finisher controller board
2	Staple finisher interface cable



## MS91x and MX91x Options Location

### SPHT

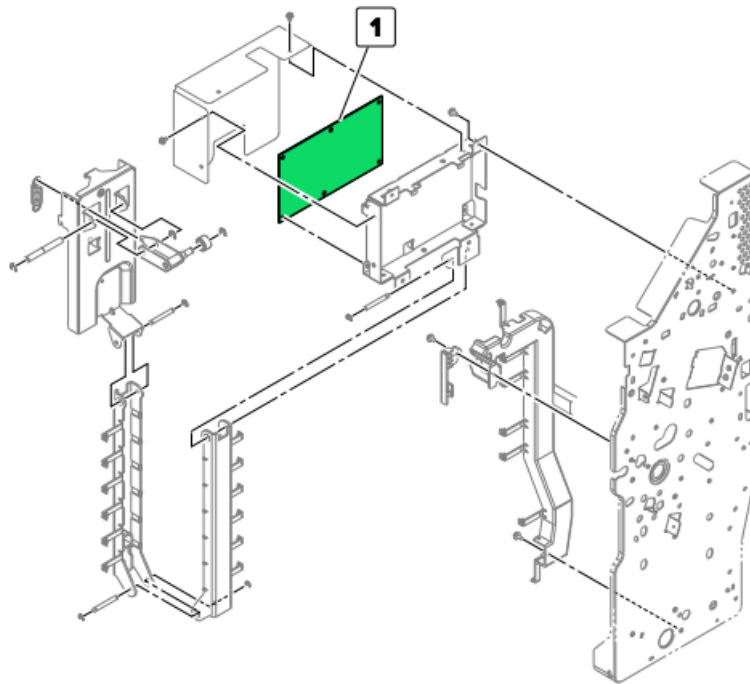


Index	Description
1	Sensor (SHPF top bin full, transmit)
2	SHPF top bin holder
3	Sensor (SHPF top bin full, receive)
4	SHPF top jam access door spring
5	Sensor (SHPF top door)
6	SHPF front door switch
7	SHPF front door switch cable
8	SHPF caster wheel
9	Booklet maker interface extension cable
10	HPT interface extension cable
11	SHPF controller board



## MS91x and MX91x Options Location

### Booklet maker



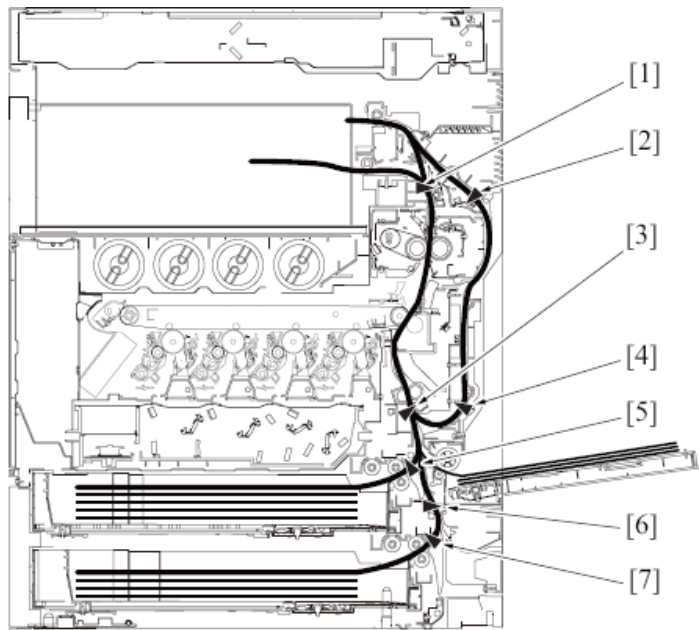
Index	Description
1	Booklet maker controller board



## MS91x and MX91x SERIES Location

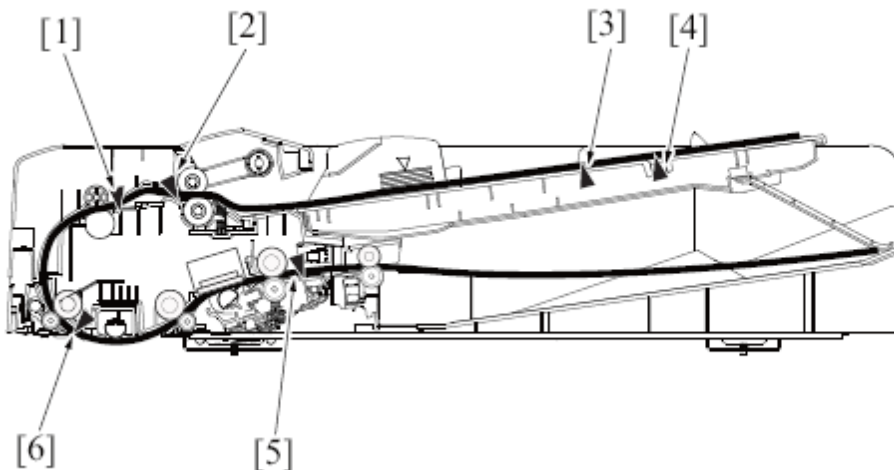
### Sensors

#### Bizhub



[1]	Paper exit sensor (PS3)	[2]	ADU paper passage sensor/1 (PS40)
[3]	Registration sensor (PS1)	[4]	ADU paper passage sensor/2 (PS41)
[5]	Tray 1 paper feed sensor (PS23)	[6]	Tray 2 vertical transport sensor (PS19)
[7]	Tray 2 paper feed sensor (PS20)	-	-

#### ADF

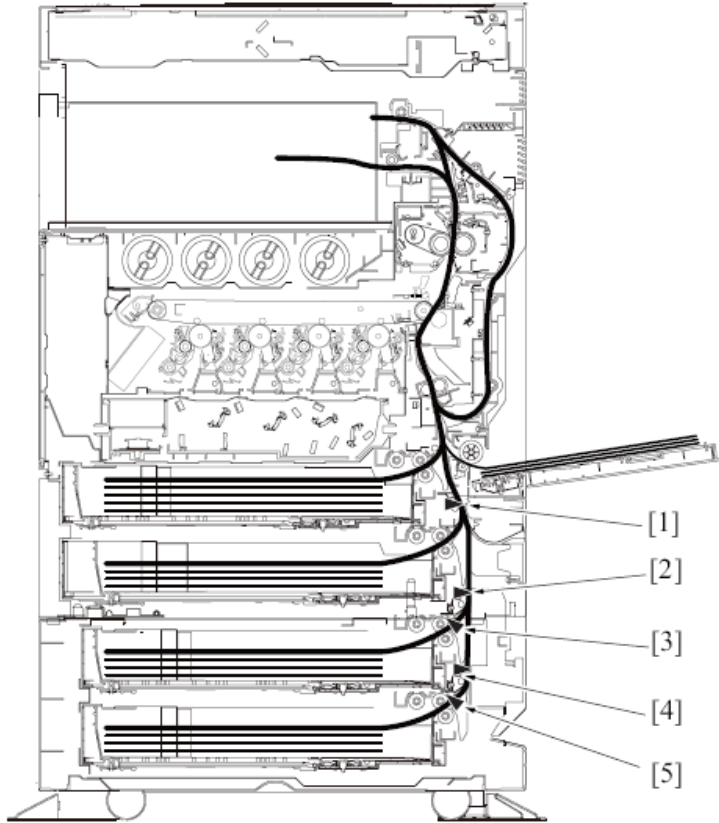




## MS91x and MX91x SERIES Location

### Sensors

#### PC-110/PC-210



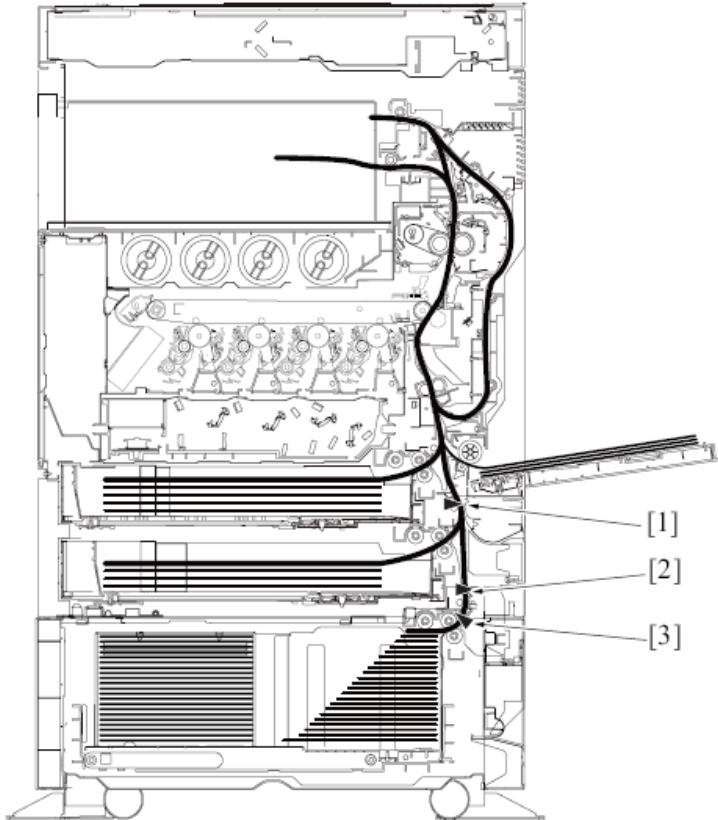
[1]	Tray 2 vertical transport sensor (PS19)	[2]	Tray 3 vertical transport sensor (PS113)
[3]	Tray 3 paper feed sensor (PS112)	[4]	Tray 4 vertical transport sensor (PS123)
[5]	Tray 4 paper feed sensor (PS122)	-	-



## MS91x and MX91x SERIES Location

### Sensors

#### PC-410



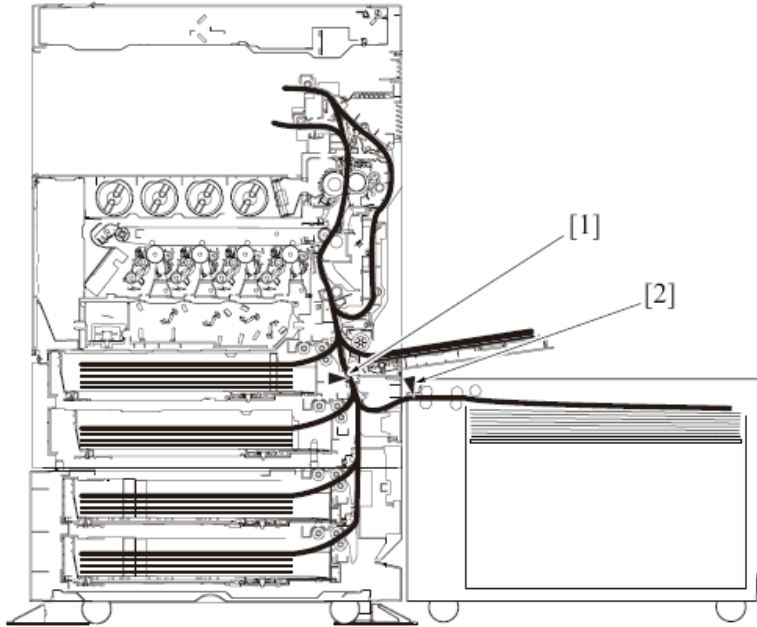
[1]	Tray 2 vertical transport sensor (PS19)	[2]	Vertical transport sensor (PS133)
[3]	Paper feed sensor (PS132)	-	-



**MS91x and MX91x SERIES**  
**Location**

**Sensors**

**LU-204/ LU-301**



[1] Tray2 vertical transport sensor (PS12)

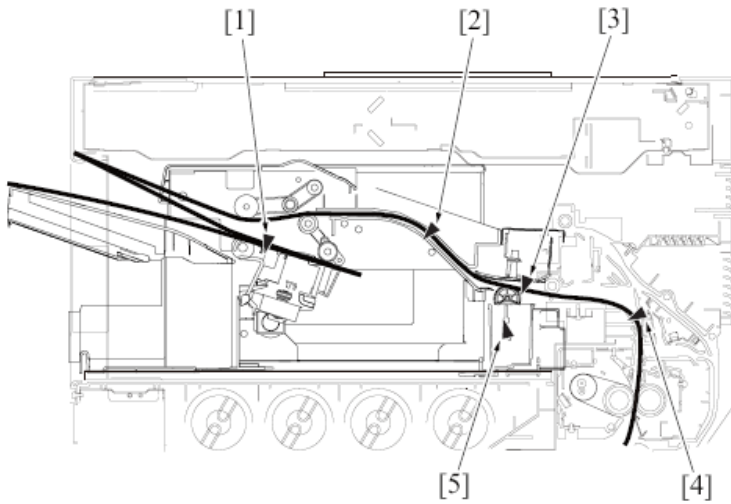
[2] Paper feed sensor (PS3)



## MS91x and MX91x SERIES Location

### Sensors

FS-533/PK-519

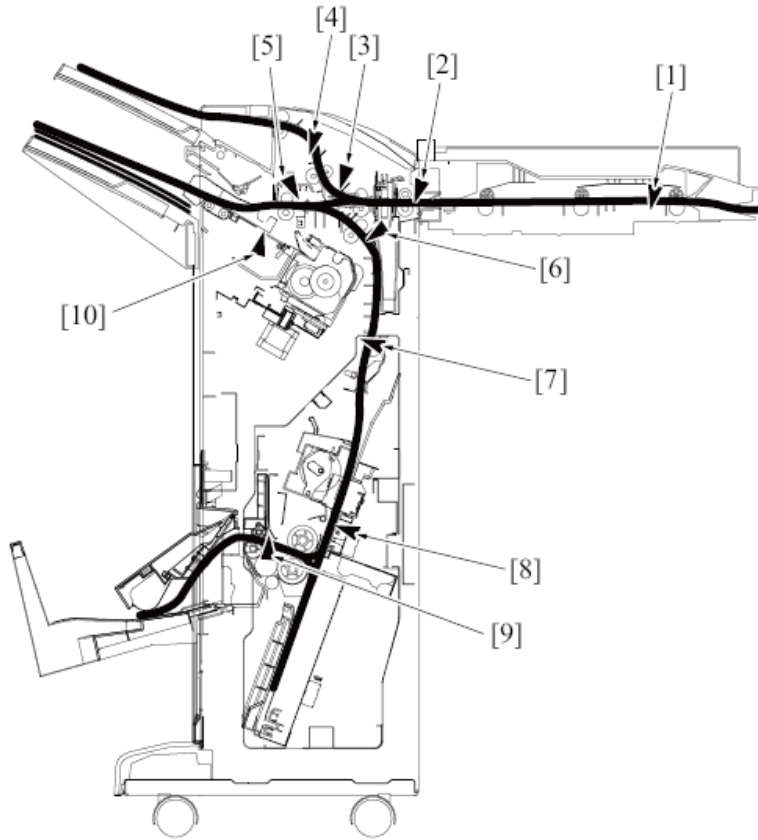


[1]	Paper surface detect sensor/1 (PS102)	[2]	Paper feed sensor (PS101)
[3]	Paper feed sensor (PS201)	[4]	Punch motor sensor (PS202)
[5]	Stapler home sensor (PS110)	-	-



## MS91x and MX91x SERIES Location

### Sensors

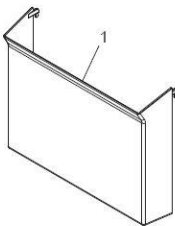
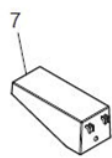
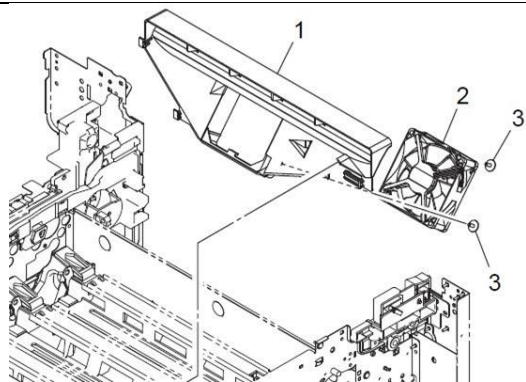


[1]	RU entrance sensor (PS2)	[2]	FNS entrance sensor (PS4)
[3]	Punch position sensor (PS2)	[4]	Sub tray exit sensor (PS8)
[5]	Saddle exit sensor (PS5)	[6]	Staple stacker paper detection sensor (PS31)
[7]	Saddle entrance sensor (PS1)	[8]	Center staple/fold stacker paper detect sensor (PS3)
[9]	Fold exit sensor (PS12)	[10]	Maintray exit sensor (PS16)

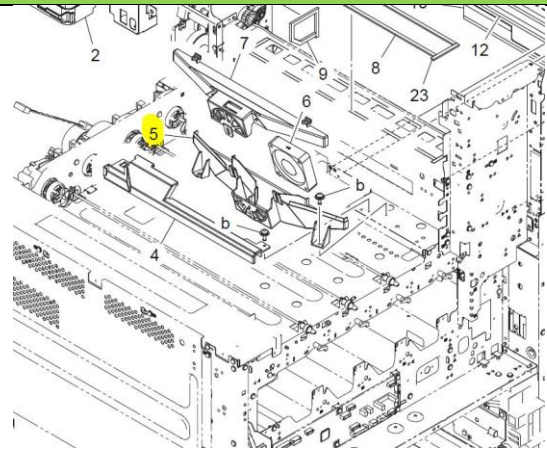
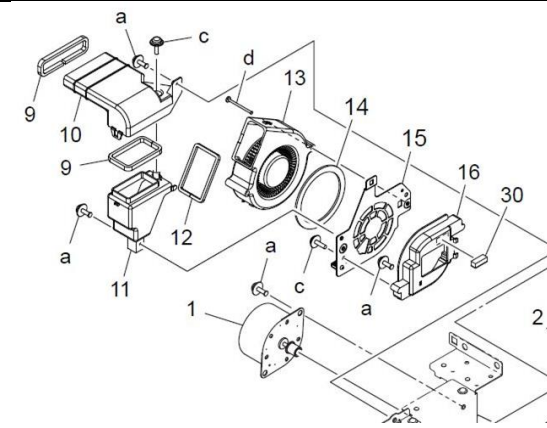
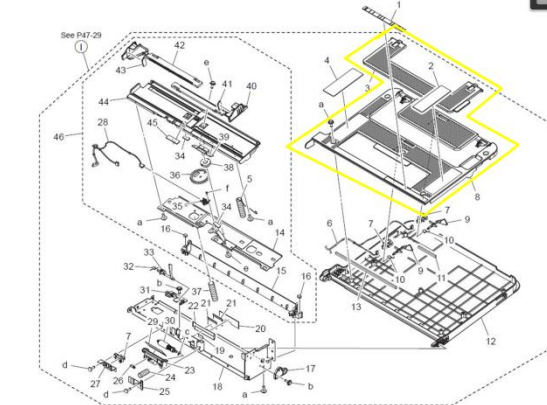
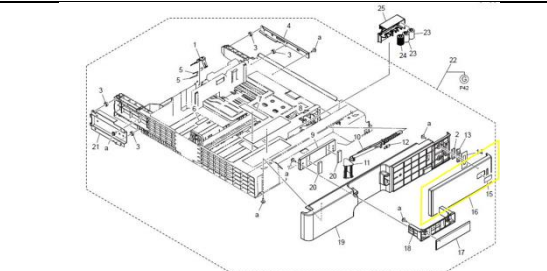


**Appendix A**  
**Plastic containing brominated flame retardants**

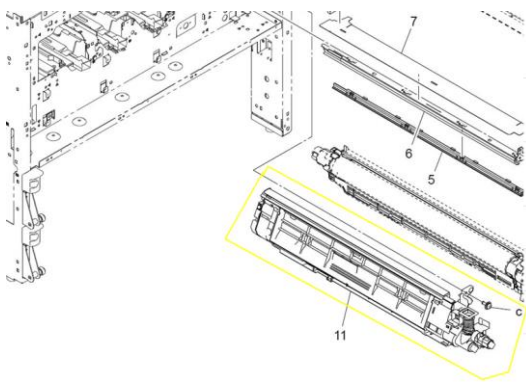
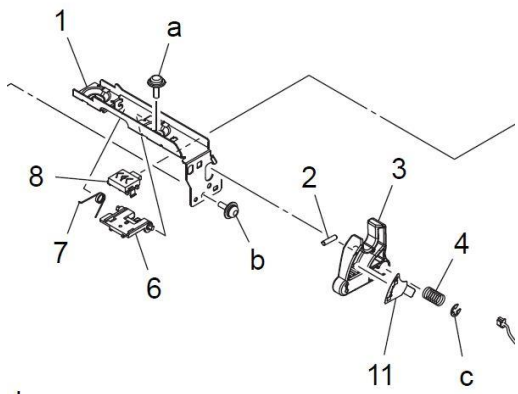
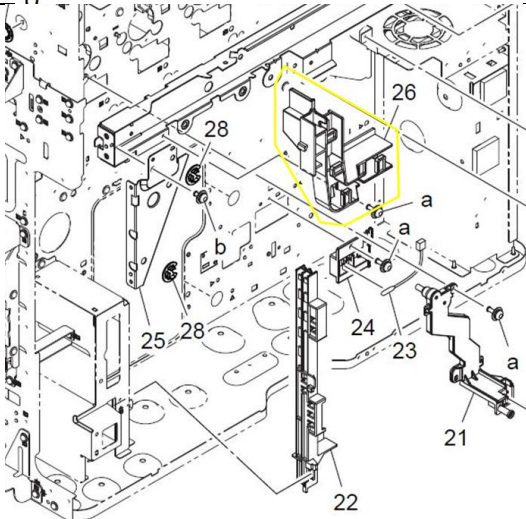
**Plastics greater than or equal 25g**

Location	Part Index	General Location	Part Description	Parts Marking
<p>ACCESSORY PARTS</p> 	1	Accessory part Left side cover	Holder	>PS-HI FR(17)<
	7	Accessory part	Installing Spacer	>PS-HI FR(17)<
	1	Air Duct Section	Duct	>PS-HI FR(17)<
	21	Air Duct Section	Duct	>PS-HI<

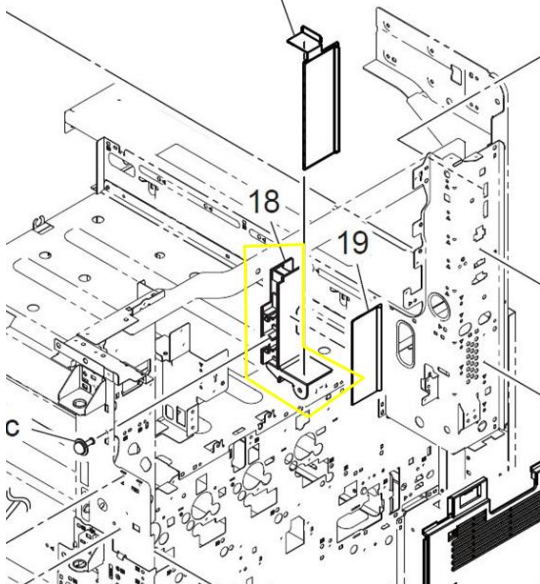
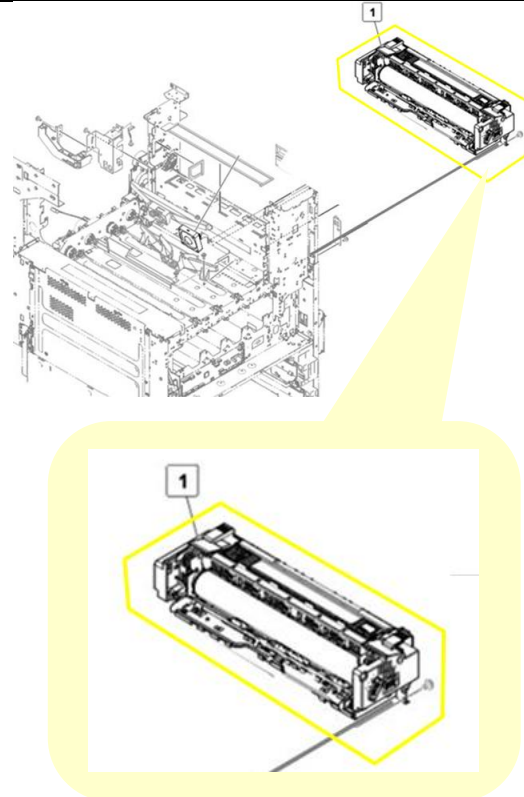


Location	Part Index	General Location	Part Description	Parts Marking
	5	Air Duct Section	Duct /2	>PS-HI FR(17)<
	10	Air Duct Section	Duct /3	>PS-HI FR(17)<
	8	Bypass Tray Section	Bypass Tray /Upper	>PS-HI FR(17)<
	3	Bypass Tray Section	Auxiliary Tray	>PS-HI FR(17)<
	16	Cassette Section	Cover	>PS-HI FR(17)<

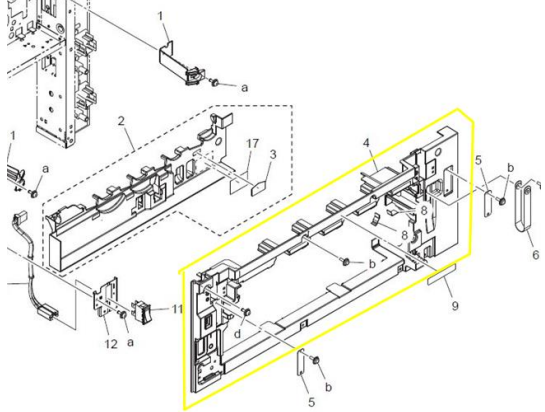
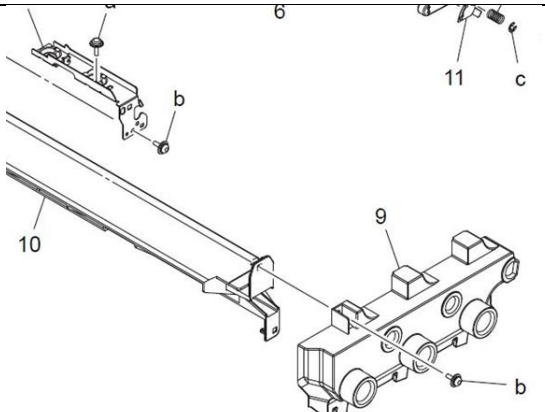
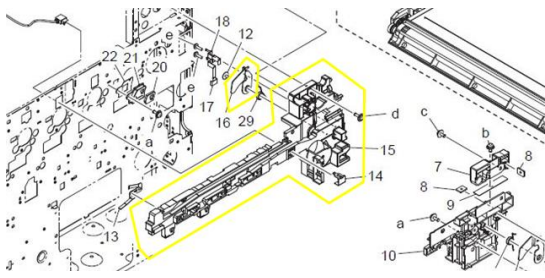


Location	Part Index	General Location	Part Description	Parts Marking
	11	Developer Unit	Developing Housing	>ABS-GF20 FR(17) <
	11	Developer Unit	Developing Cover	>ABS-GF20 FR(17) <
	11	Developer Unit	Cover	>PS-HI FR(17)<
		Developer Unit Lock Section	Guide	>PS-HI FR(17)<
	26	Electrical Mounting Section	Guide	>PS<

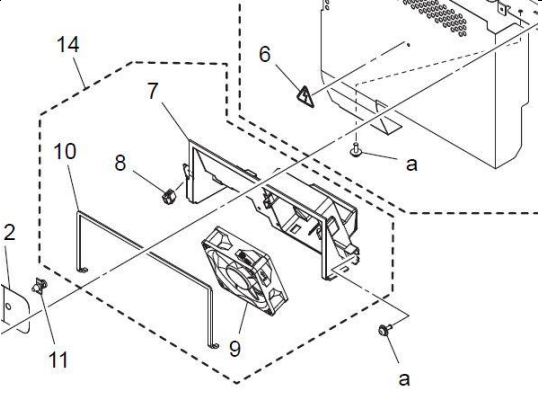
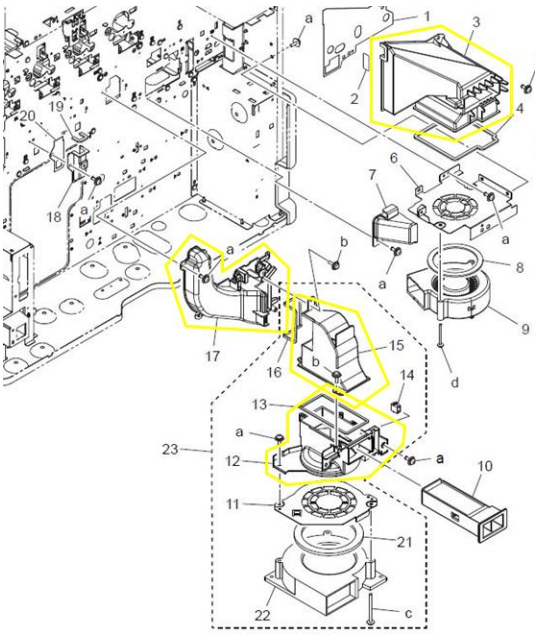
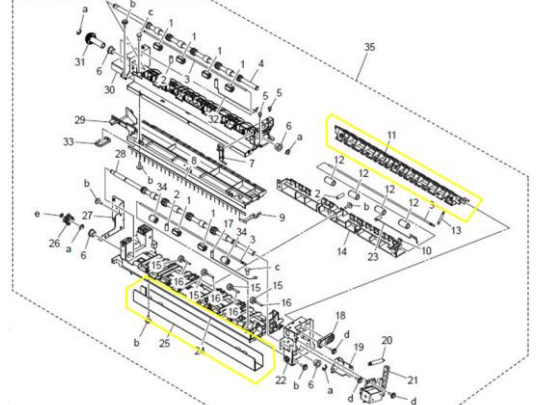


Location	Part Index	General Location	Part Description	Parts Marking
	18	Electrical Mounting Section	Guide	>PS-HI FR(17)<
	1	Fusing Unit	Guide Cover	>PET-(GF+MD)40 FR(17)<
	1	Fusing Unit	Cover /Lower	>PET-(GF+MD)40 FR(17)<
	1	Fusing Unit	Guide Plate	>PET-(GF+MD)40 FR(17)<
	1	Fusing Unit	Cover /Rear	>PET-(GF+MD)40 FR(17)<
	1	Fusing Unit	Cover /Front	>PET-(GF+MD)40 FR(17)<
	1	Fusing Unit	Guide Plate	>PET-(GF+MD)40 FR(17)<
	1	Fusing Unit	Holder	>PET-(GF+MD)40 FR(17)<

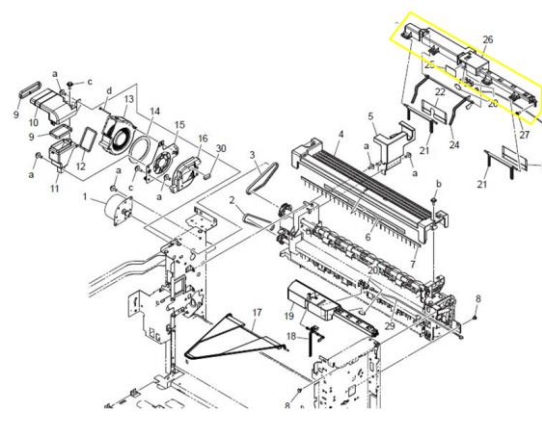
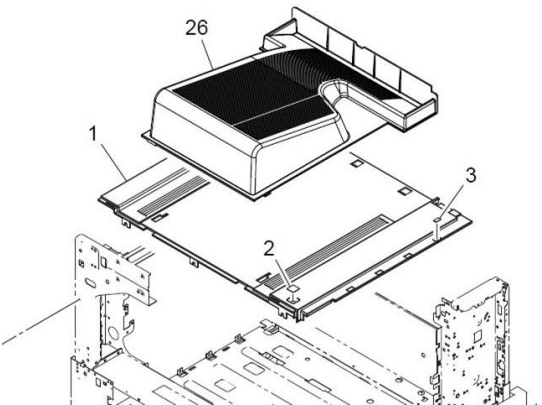
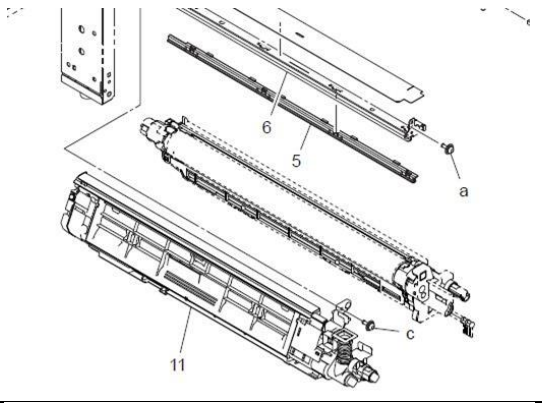
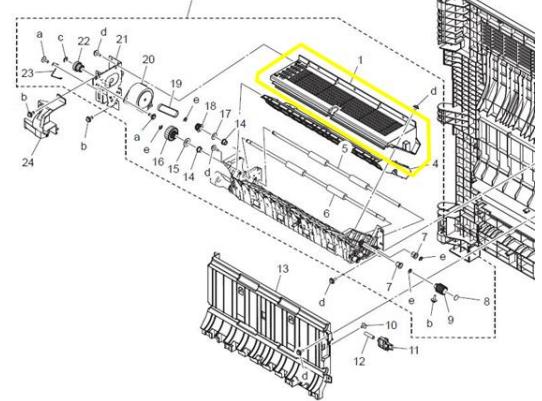


Location	Part Index	General Location	Part Description	Parts Marking
	4	Inner Cover Section	Cover /Front	>PS-HI FR(17)<
	9	Inner Cover Section	Cover /Inside	>PS-HI FR(17)<
	19	Inner Cover Section	Cover /Front	>PS-HI FR(17)<
	15	Main Frame Section	Rail	>PET-(GF+MD)40 FR(17)<
	10	Main Frame Section	Rail	>ABS-GF20 FR(17) <

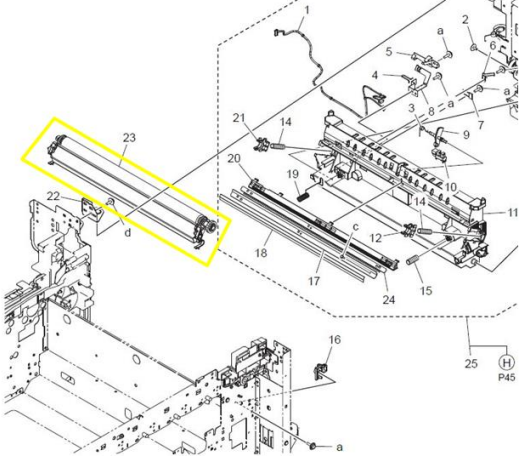
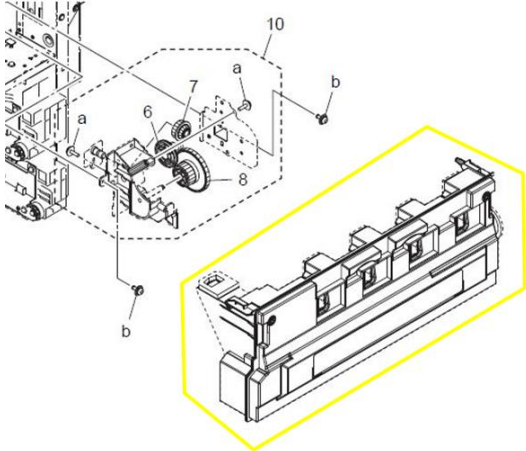


Location	Part Index	General Location	Part Description	Parts Marking
	7	Main Power Supply Section	Cooling Duct	>PS-HI FR(17)<
	3	Ozone Duct Section	Duct /1	>PS-HI FR(17)<
	17	Ozone Duct Section	Duct /1	>PS-HI FR(17)<
	12	Ozone Duct Section	Duct /3	>PS-HI FR(17)<
	15	Ozone Duct Section	Duct /2	>PS-HI FR(17)<
	11	Paper Exit Section	Guide Lever	>PC-GF20<
	25	Paper Exit Section	Regulating Plate	>PET-(GF+MD)40 FR(17)<



Location	Part Index	General Location	Part Description	Parts Marking
	26	Paper Exit Section	Holder	>PS-HI FR(17)<
	19	Paper Exit Section	Holder	>PS-HI FR(17)<
	1	Paper Exit Tray	Tray	>PS-HI FR(17)<
		Photoconduct or Unit	Housing	>ABS-GF20 FR(17) <
	1	Reversal Unit	Cover /Upper	>PS-HI FR(17)<



Location	Part Index	General Location	Part Description	Parts Marking
	23	Transfer Unit	Housing	>PS-HI FR(17)<
	10	Waste Toner Box	Collection Box	>PS-HI FR(17)<



**Appendix B**  
**Printed Circuit Boards per Model**

No.	Description	Location	MS910de	MX910/ MX911/ MX912
1	Control panel board (Inside Control panel assembly)	Op panel	X	X
2	Image controller board	Printhead	X	X
3	Printhead relay board	Printhead	X	X
4	Power-saving board	High Voltage	X	X
5	Induction heater magnetic erase board	High Voltage	X	X
6	Expansion controller board	High Voltage	X	X
7	High voltage board	High Voltage	X	X
8	Noise filter board, 110/ 230 V	High Voltage	X	X
9	Induction heater power supply, 110/ 230 V	High Voltage	X	X
10	Main power supply, 110, 230 V	Main power supply	X	X
11	Engine controller board	Engine 2	X	X
12	Controller board, MFP/ SFP	Engine 2	X	X
13	Hard drive	Engine 2	X	X
14	ADF/scanner controller board	Engine 2		X
15	ADF controller board	ADF Covers 1		X
16	ADF CIS power supply board	ADF CIS 1		X
17	Scanner controller board	Flatbed scanner		X