


Printing Guide

Loading trays

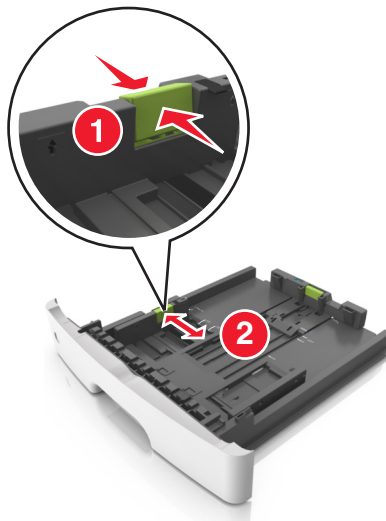
 **CAUTION—POTENTIAL INJURY:** To reduce the risk of equipment instability, load each tray separately. Keep all other trays closed until needed.

- 1 Pull out the tray completely.

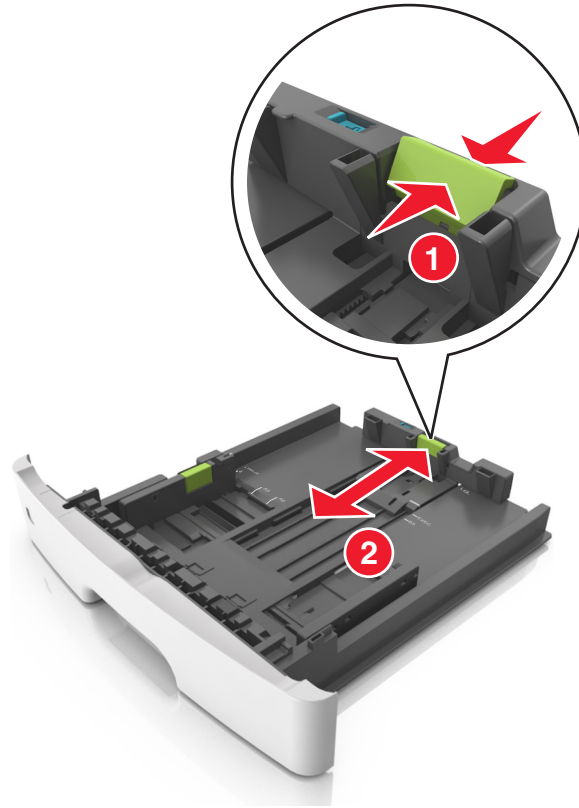
Note: Do not remove trays while a job prints or while **Busy** appears on the printer display. Doing so may cause a jam.



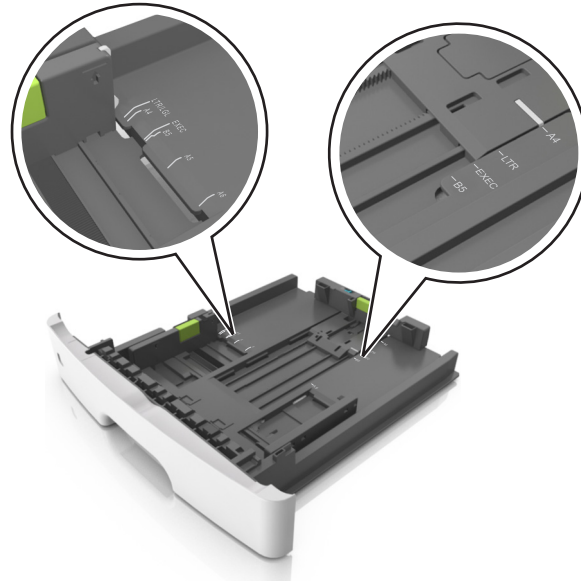
- 2 Squeeze and then slide the width guide tab to the correct position for the size of the paper you are loading.



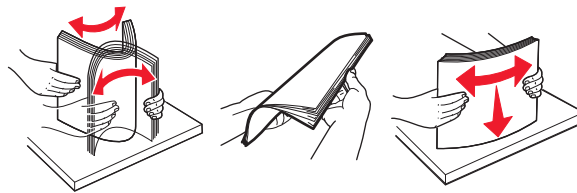
- 3 Squeeze and then slide the length guide tab to the correct position for the size of the paper you are loading.

**Notes:**

- For some paper sizes like letter, legal, and A4, squeeze and slide the length guide tab backward to accommodate their length.
- When loading legal-size paper, the length guide extends beyond the base leaving the paper exposed to dust. To protect the paper from dust, you can purchase a dust cover separately. For more information, contact customer support.
- If you are loading A6-size paper in the standard tray, then squeeze and then slide the length guide tab toward the center of the tray to the A6-size position.
- Make sure the width and length guides are aligned with the paper size indicators on the bottom of the tray.



- 4 Flex the sheets back and forth to loosen them, and then fan them. Do not fold or crease the paper. Straighten the edges on a level surface.



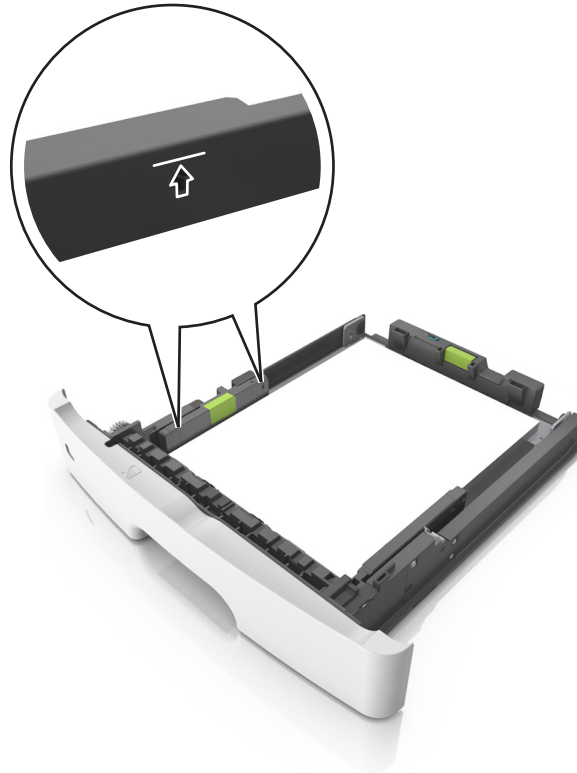
- 5 Load the paper stack.



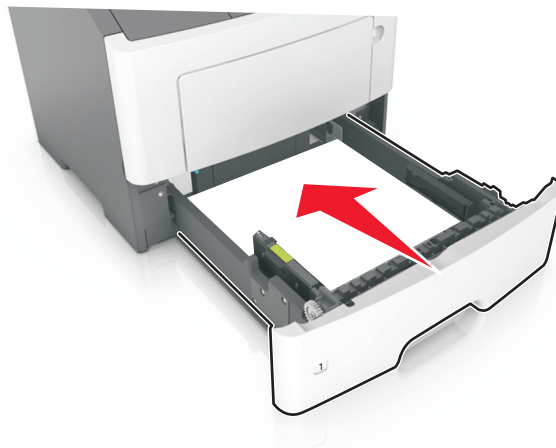
Notes:

- Load with the printable side facedown when using recycled or preprinted paper.
- Load prepunched paper with the holes on the top edge toward the front of the tray.
- Load letterhead facedown, with the top edge of the sheet toward the front of the tray. For two-sided printing, load letterhead faceup with the bottom edge of the sheet toward the front of the tray.

- Make sure the paper is below the maximum paper fill indicator located on the side of the width guide.



6 Insert the tray.



7 From the printer control panel, set the paper size and paper type in the Paper menu to match the paper loaded in the tray.


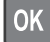
Note: Set the correct paper size and type to avoid paper jams and print quality problems.

Setting the paper size and type

1 From the printer control panel, navigate to:

 > Settings >  > Paper Menu >  > Paper Size/Type > 

2 Press the up or down arrow button to select the tray or feeder, and then press .

- 3 Press the up or down arrow button to select the paper size, and then press .
- 4 Press the up or down arrow button to select the paper type, and then press  to change the settings.