

Disassembly of Waste Electrical and Electronic Equipment (WEEE) Manual

EU Waste Electronic and Electrical Equipment Directive require producers to provide information of the different electronic and electrical materials and components found in their products at its end-of-life, and disassembly references to treatment and recycling facilities.

The disassembly information for this product has been prepared for use by a recognized treatment or recycling facility and is not intended to be used by others.

1. Product information
2. Materials and components list for selective treatment
3. Disassembly tools
4. Disassembly references

The following information is intended only for the use of treatment and recycling facilities.

All disassembly instructions should be performed with the power switch in the OFF position. Disconnect the power cord from the wall outlet and from the printer before continuing. If there are any other devices attached to the printer, then turn them off as well, and unplug any cables going into the printer.

1. Product information

Model name(s)—Indicate all model name(s) within the product family

Model name
Lexmark CS820de, Lexmark CS820dte, Lexmark CS820dtfe, Lexmark C6160
Lexmark CX820de, Lexmark CX820dtfe, Lexmark XC6152
Lexmark CX825de, Lexmark CX825dte, Lexmark CX825dtfe, Lexmark XC8155
Lexmark CX860de, Lexmark CX860dte, Lexmark CX860dtfe, Lexmark XC8160

** Add rows as needed*

2. Materials and components list for selective treatment

Items	Quantity	Notes
Polychlorinated biphenyls (PCB) containing capacitors	0	N/A
Mercury containing components, such as switches or backlighting lamps	0	N/A
Batteries	1	Lithium Manganese Dioxide coin cell located on the system controller card
Printed circuit boards greater than 10 cm ²	--	8 – CS820de, C6160 15 – CX825, XC8155, CX860, C8160 4 – Toner cartridges 6 – Options 5 – MSHPF Option
Toner cartridges, liquid and pasty, as well as colour toner	5	4 – Toner cartridges 1 – Waste toner bottle

Plastic containing brominated flame retardants	--	Fan(s) and Sensors (locations illustrated in 4.2)
Asbestos waste and components which contain asbestos	0	N/A
Cathode ray tubes	0	N/A
Chlorofluorocarbons (CFC), Hydrochlorofluorocarbons (HCFC) or Hydrofluorocarbons (HFC), Hydrocarbons (HC)	0	N/A
Gas discharge lamps	0	N/A
Liquid Crystal Display (LCD) greater than 100 cm ² and those back-lighted with Gas discharge lamps	0	N/A
External electrical cables	1	Power cord located on the rear of the printer
Components containing refractory fibres	0	N/A
Components containing radioactive substances	0	N/A
Electrolyte capacitors containing substances of concern ¹	--	1 in Capacitor(s) located on Power Supply (locations illustrated in 4.2) 1 in MSHPF Option
¹ With (height > 25 mm, diameter > 25 mm or proportionately similar volume)		

3. Disassembly tools

Item
#2 Phillips screwdriver, magnetic
Wire cutter
E-clip puller or small flat-head screwdriver
T9 screwdriver

4. Disassembly references

4.1. Removal procedure(s)



CS820 WEEE removal,



CX820 WEEE removal



CX825, CX860 WEEE removal

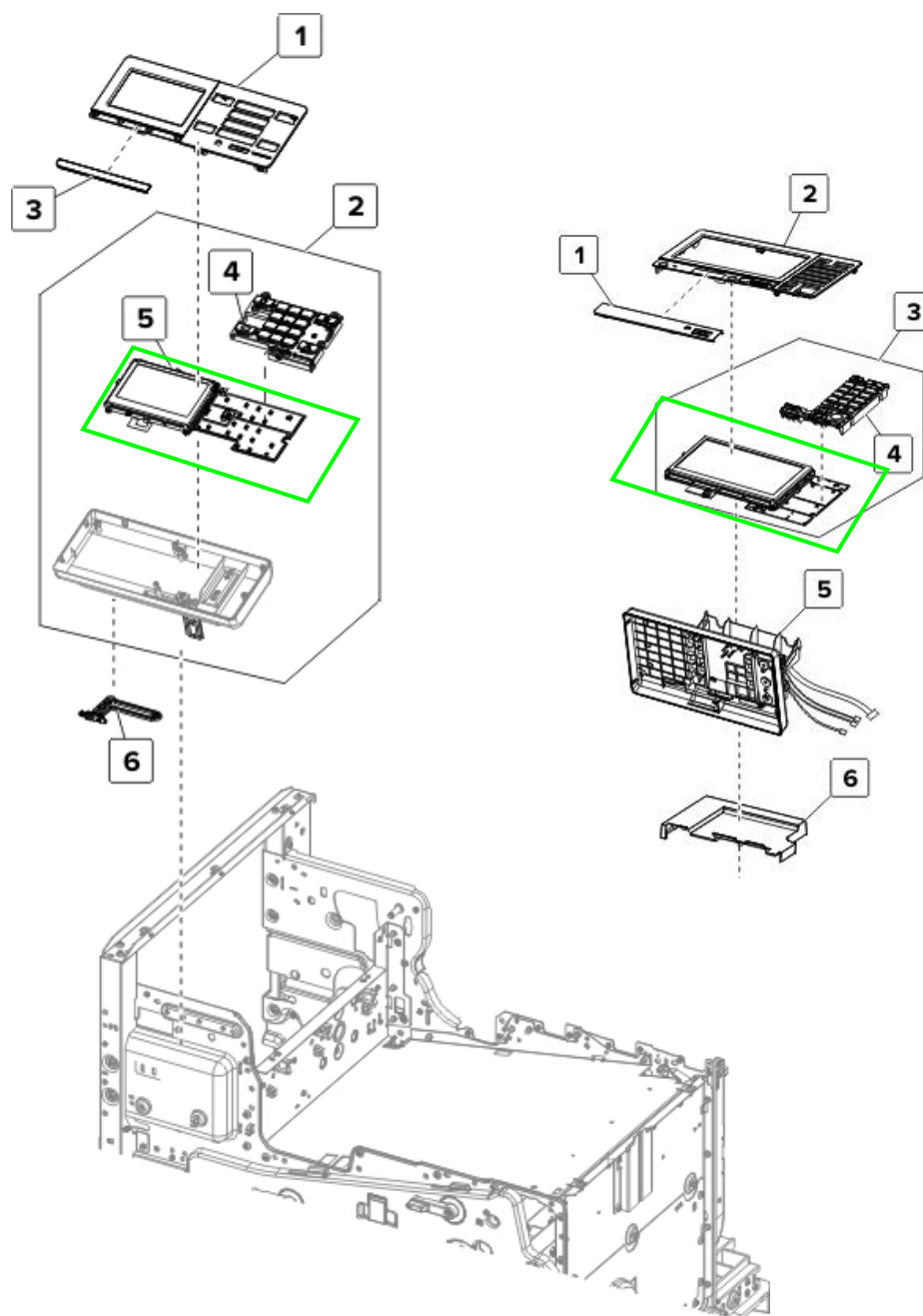
WEEE materials and components removal procedures are available upon request.

Contact: recycling@lexmark.com

4.2. Graphical illustration of material's and component's location

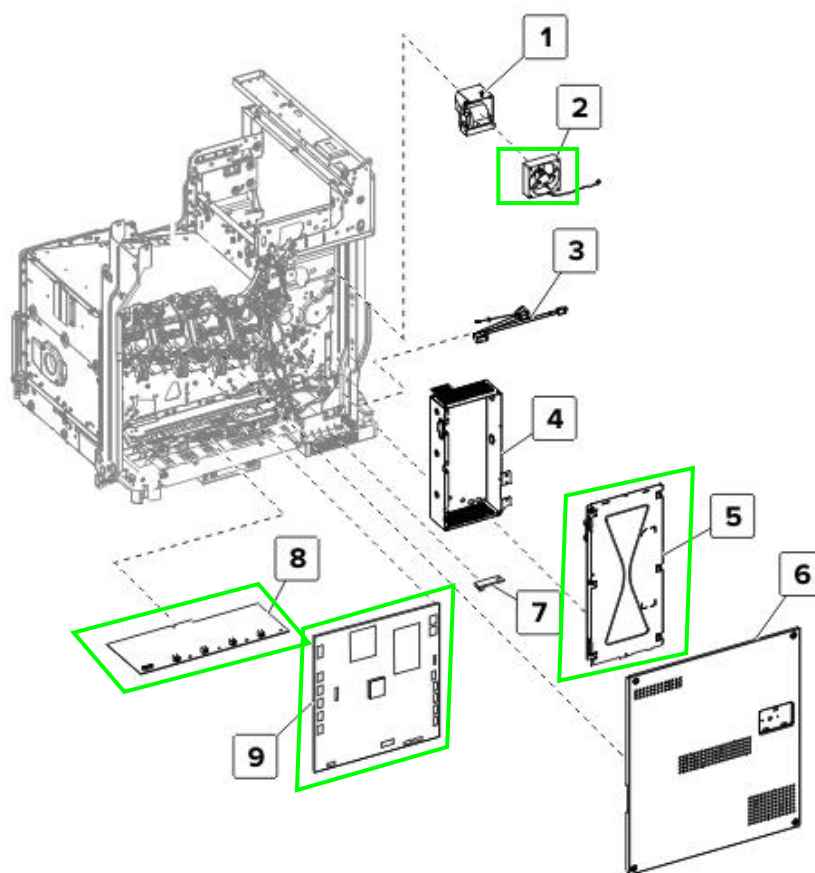
Lexmark CS820, CX82x, CX860 series
Location

Index	Description
5 (L)	CS820 Control panel, board
3 (R)	CX82x, CX860 Control panel, board



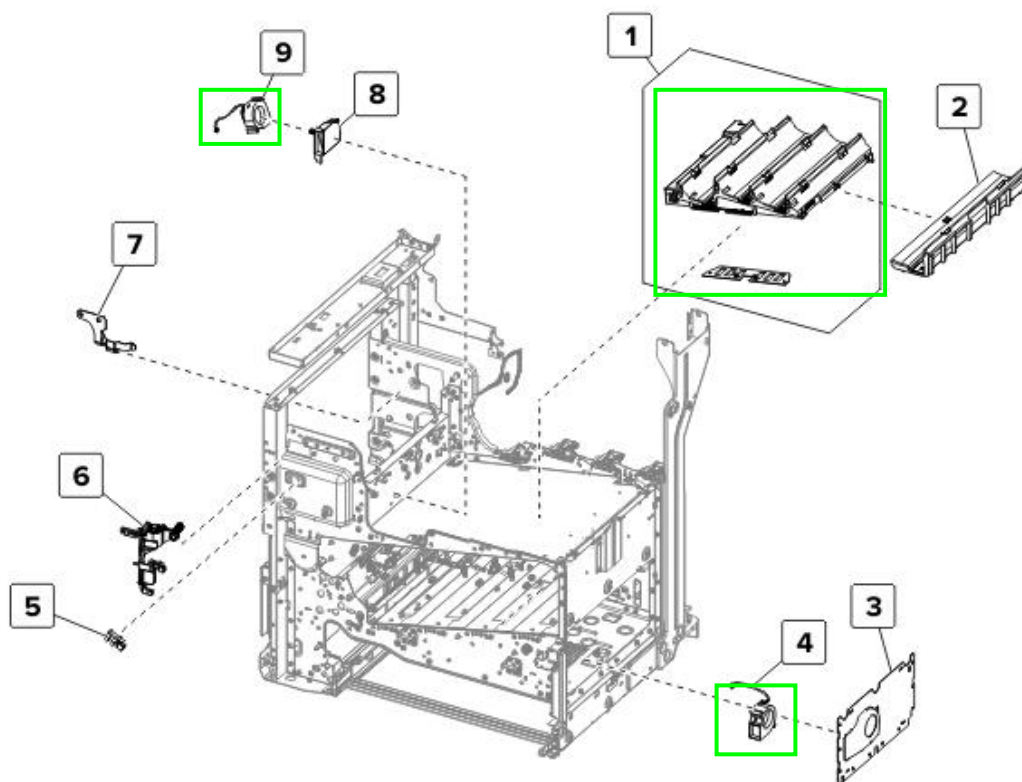
Lexmark CS820, CX82x, CX860 series
Location

Index	Description
2	Main fan
5	LVPS
8	Charge roller HVPS
9	Controller board -Fax card attached to Controller board



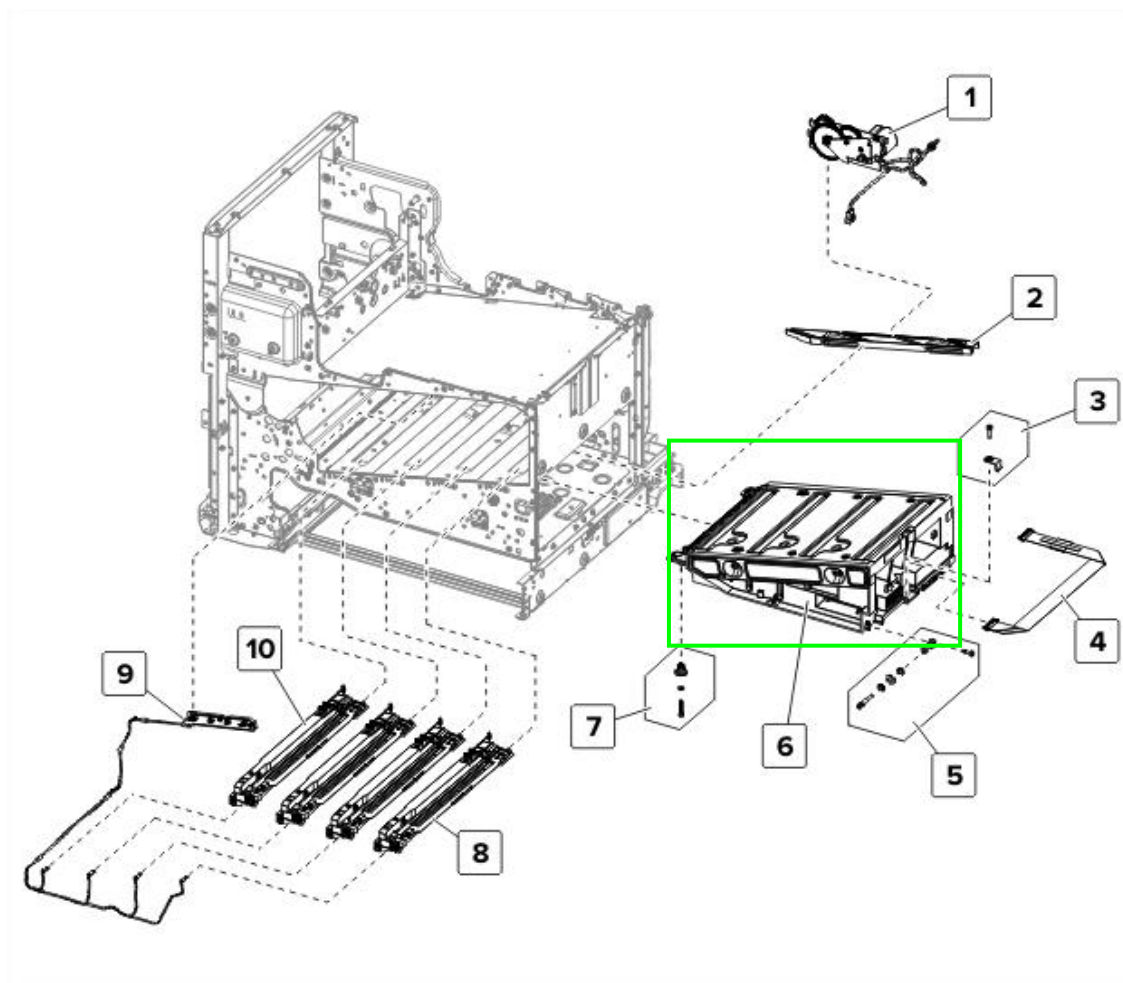
Lexmark CS820, CX82x, CX860 series
Location

Index	Description
1	Main HVPS
4	Printhead fan
9	HVPS fan



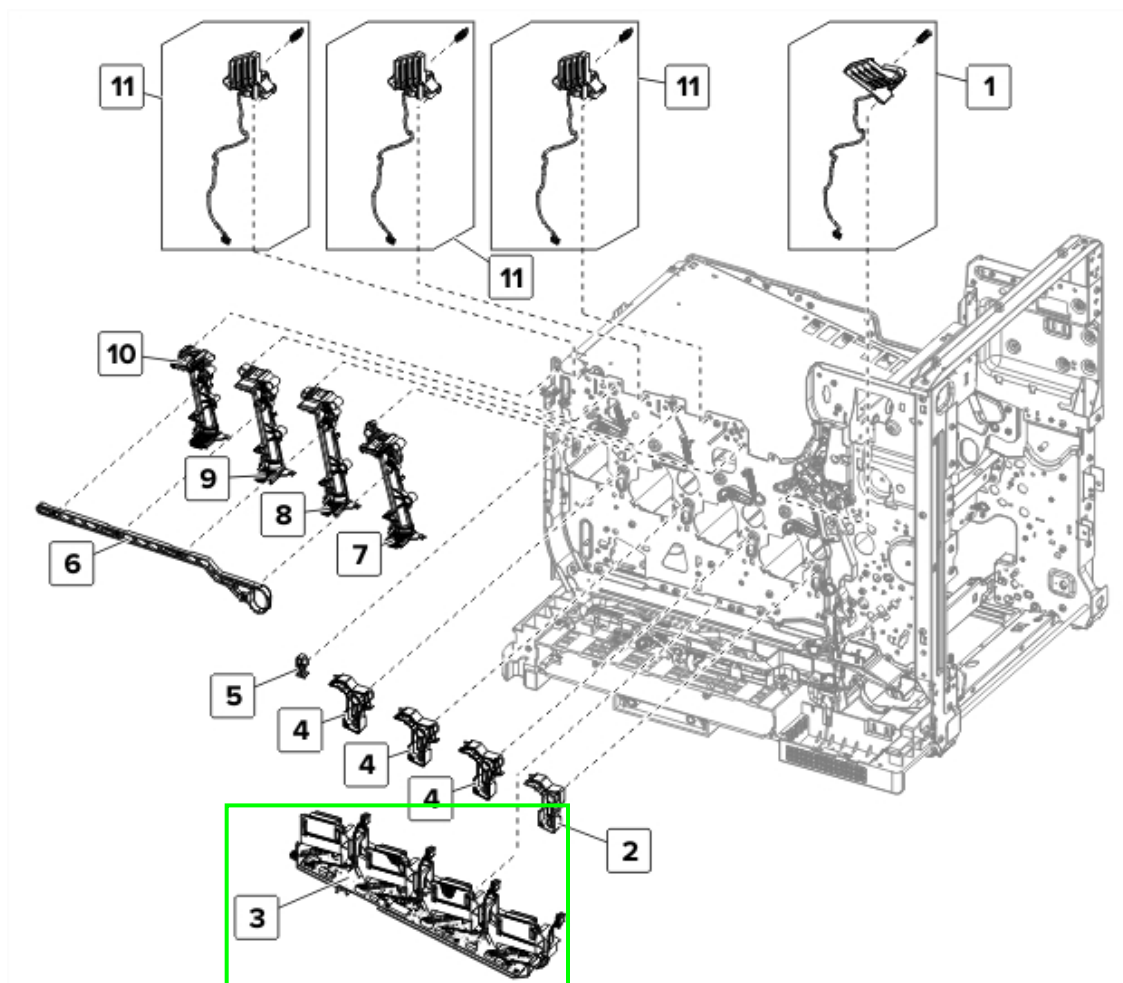
Lexmark CS820, CX82x, CX860 series
Location

Index	Description
6	LD card within Laser printhead assembly



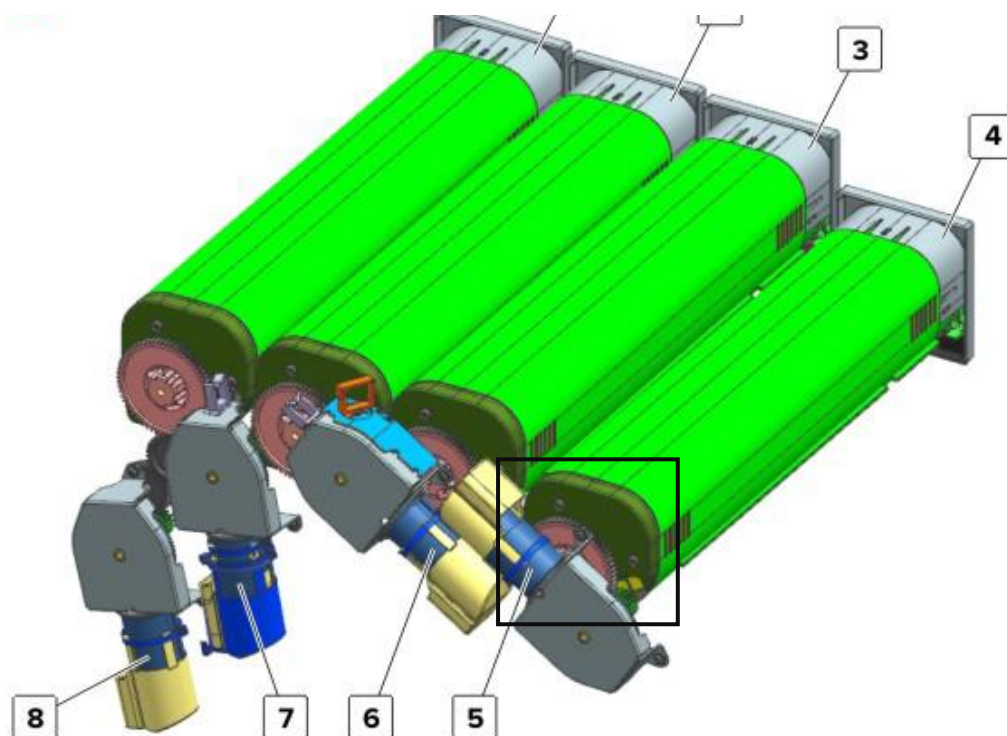
Lexmark CS820, CX82x, CX860 series
Location

Index	Description
3	Distribution card within Color Cartridge Smart Chip assembly



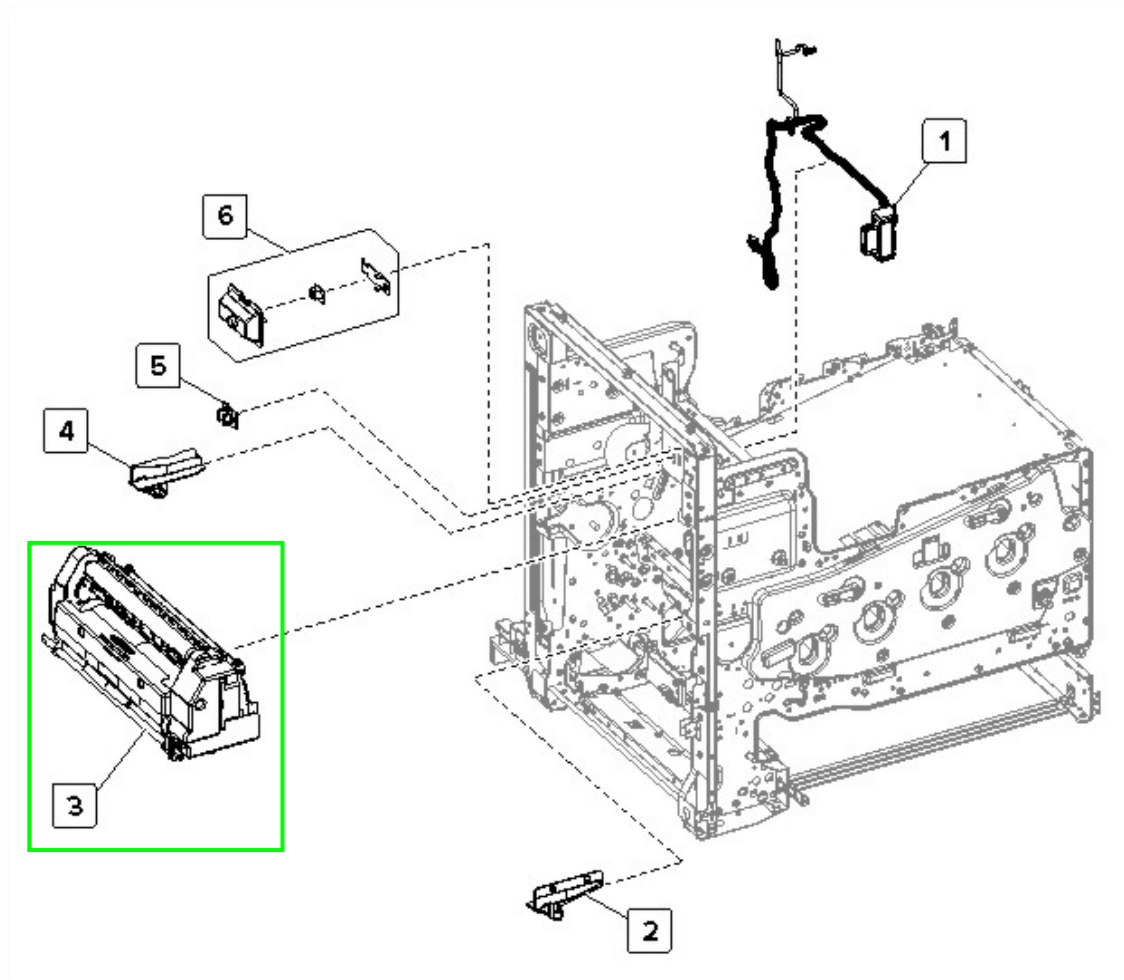
Lexmark CS820, CX82x, CX860 series
Location

Index	Description
	Bottle Secure Memory Card within the Cartridge assembly



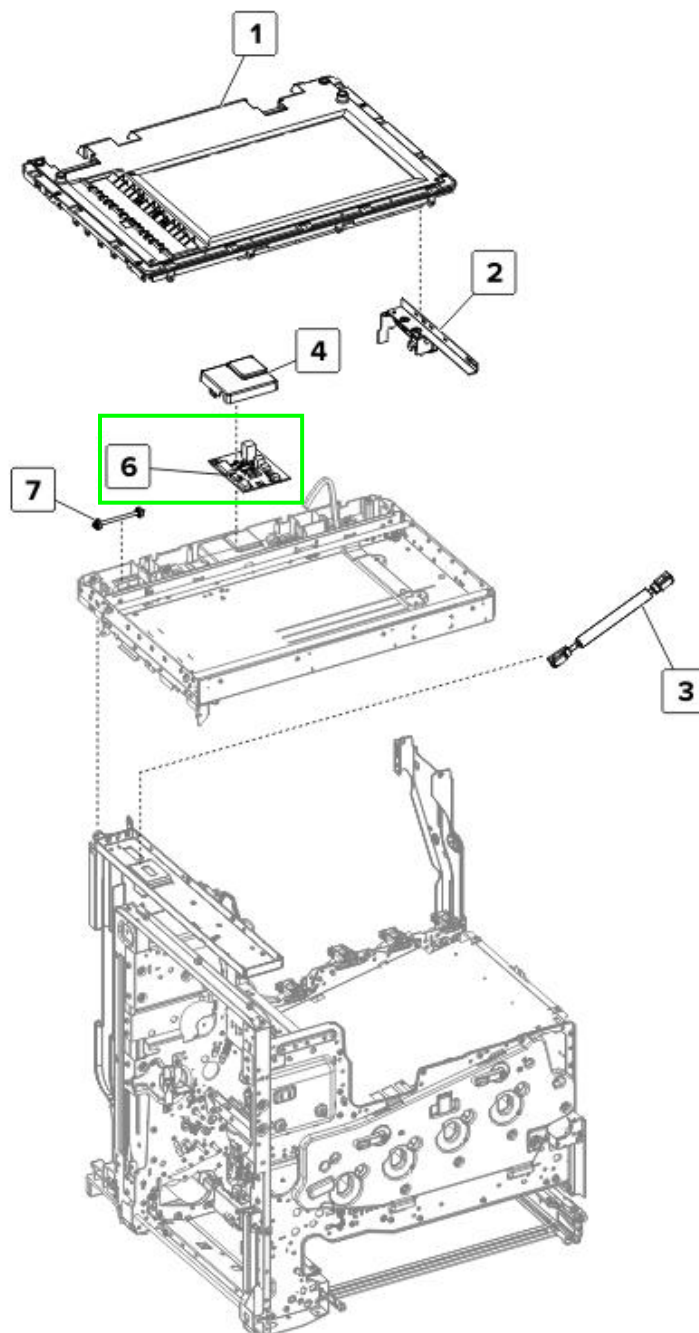
Lexmark CX82x, CX860 series
Location

Index	Description
6	Flatbed scanner board



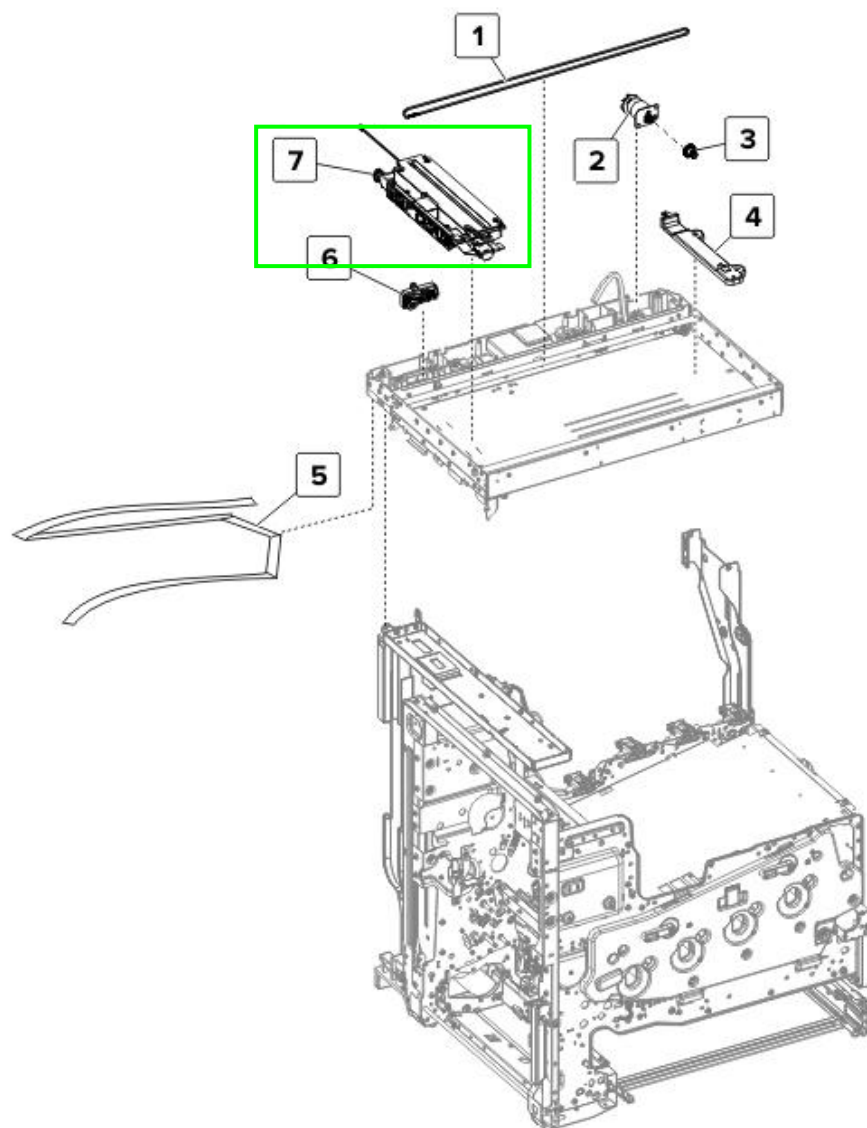
Lexmark CX82x, CX860 series
Location

Index	Description
6	Flatbed scanner board



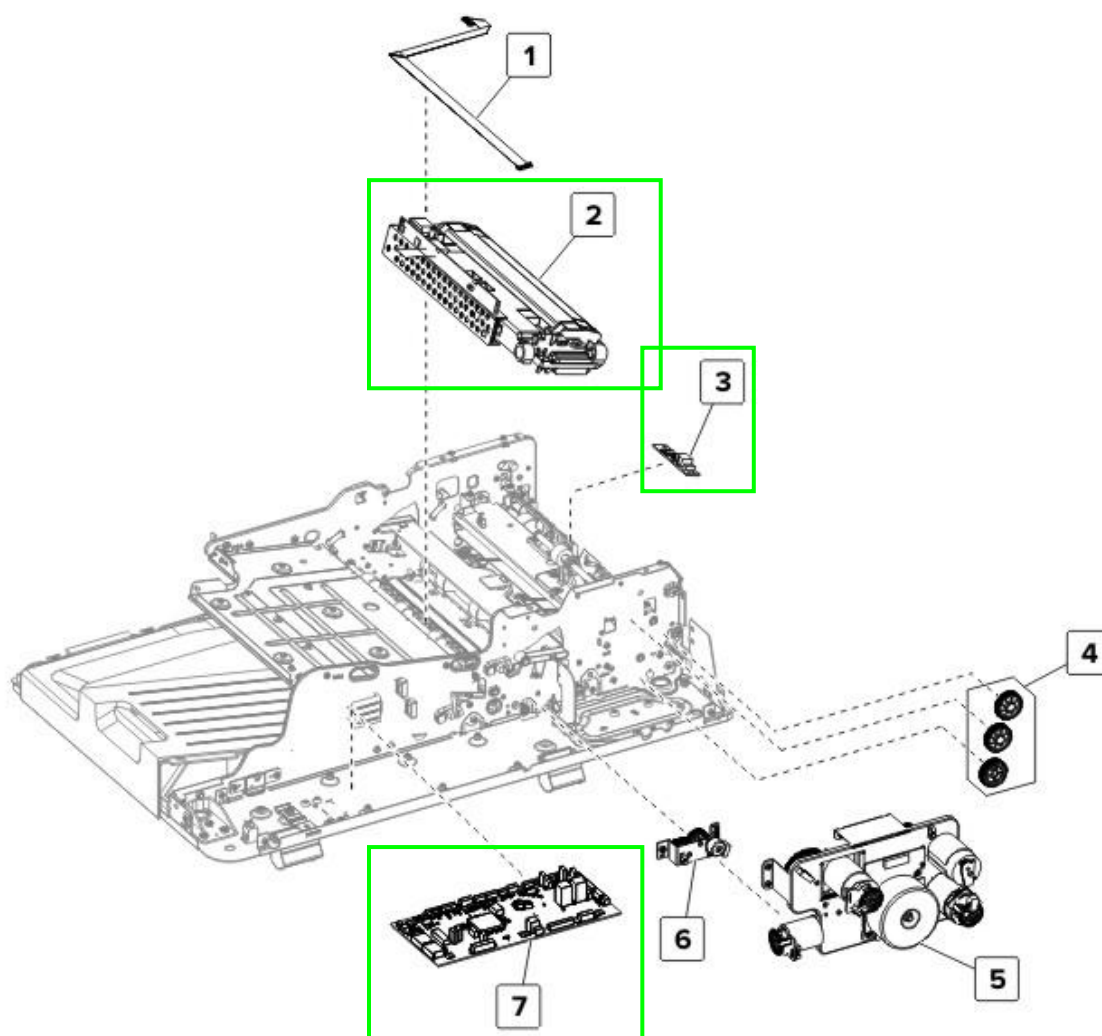
Lexmark CX82x, CX860 series
Location

Index	Description
7	CCDM Flatbed card within the assembly



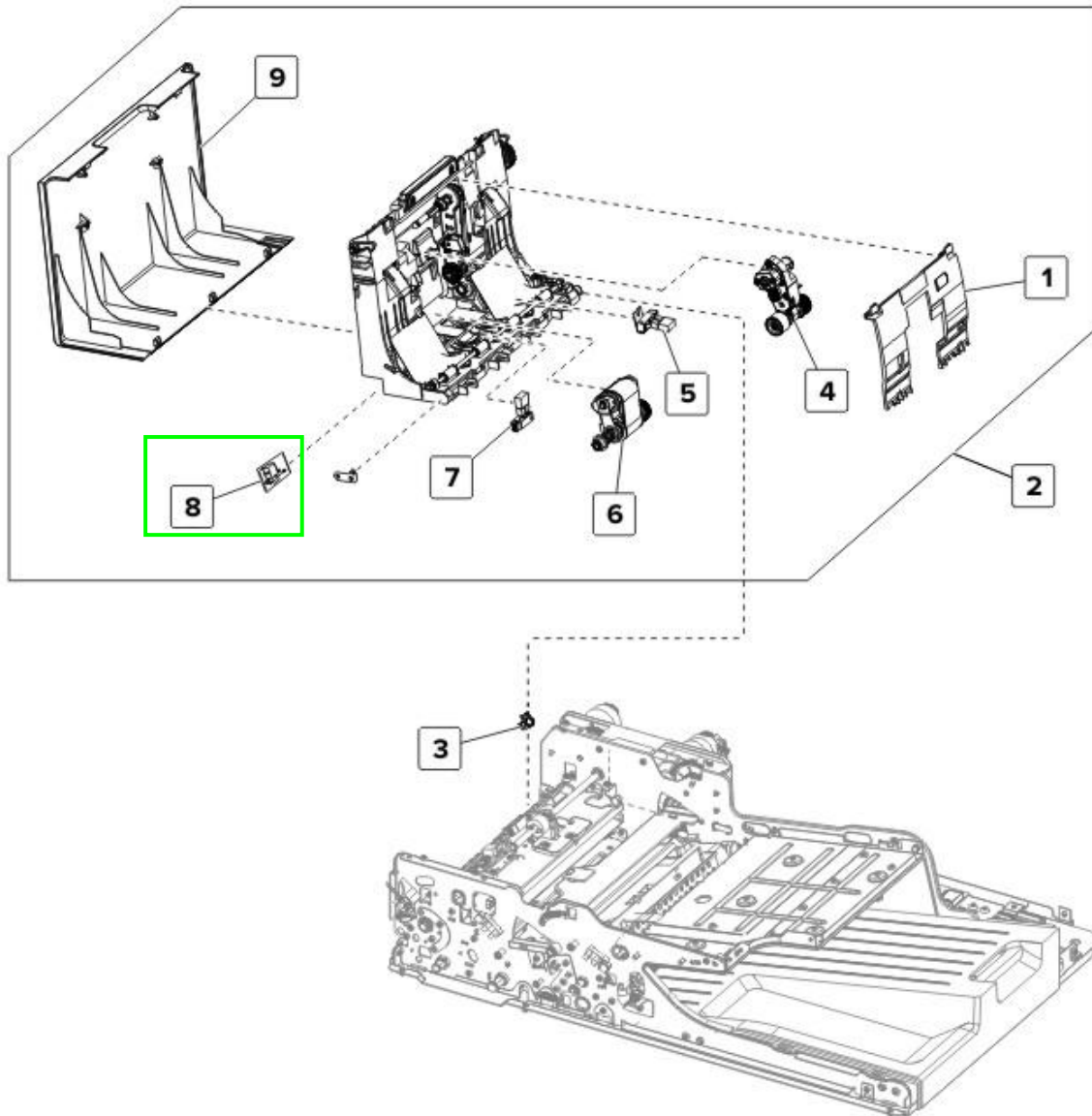
Lexmark CX82x, CX860 series
Location

Index	Description
2	CCDM ADF card within the assembly
3	Multi-feed detection reception
7	ADF controller board

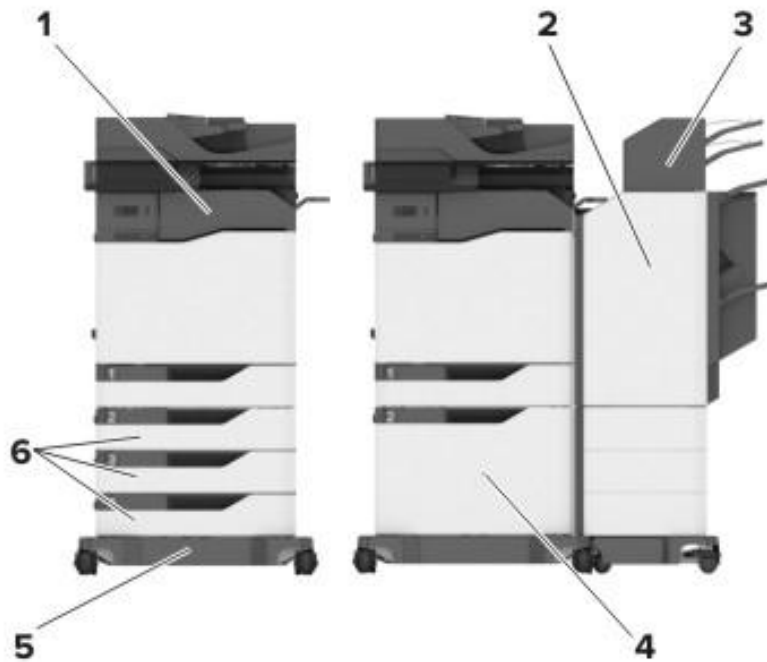


Lexmark CX82x, CX860 series
Location

Index	Description
2	Multi-feed detection transmission



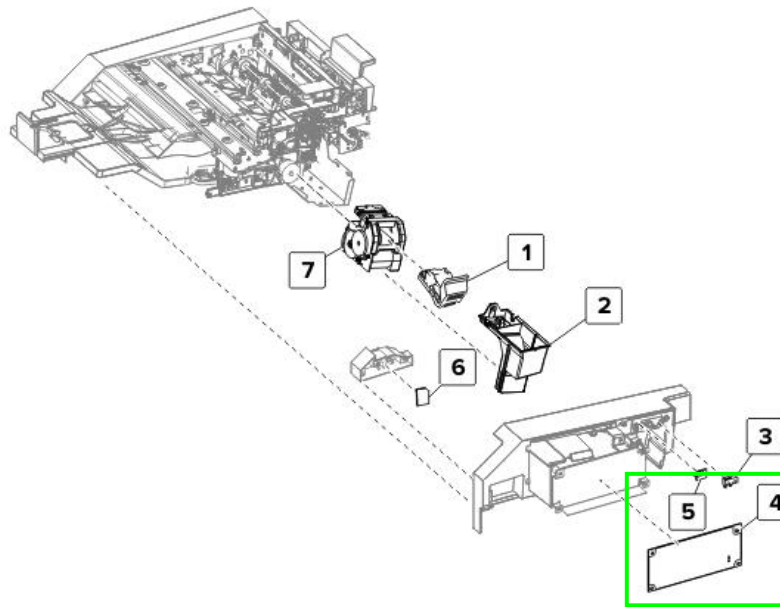
Options Locations



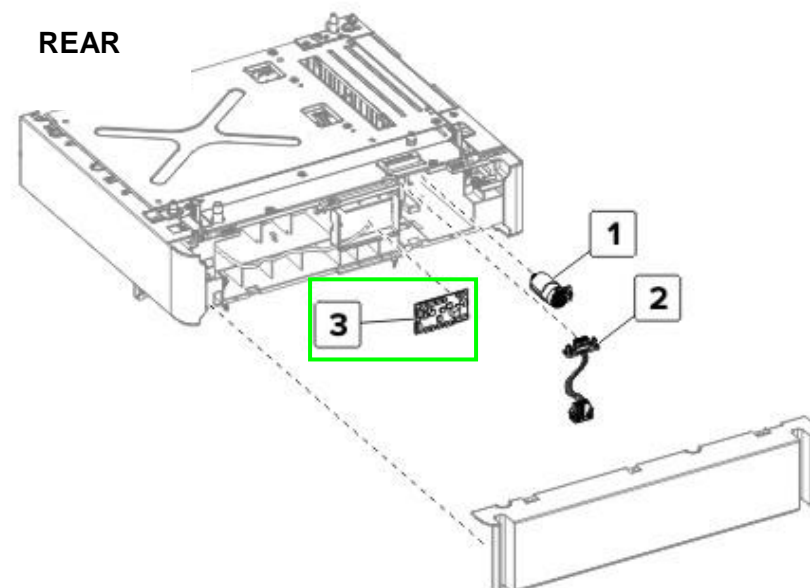
1	Staple finisher Note: This option is not supported if another finisher is installed.
2	Multiposition staple, hole punch finisher Note: This option is not supported if another finisher is installed.
3	Mailbox
4	Optional 2200-sheet tray
5	Caster base
6	Optional 550-sheet tray

Staple Finisher & 550-Tray Sheet Location

Index	Description
4	Staple finisher controller board



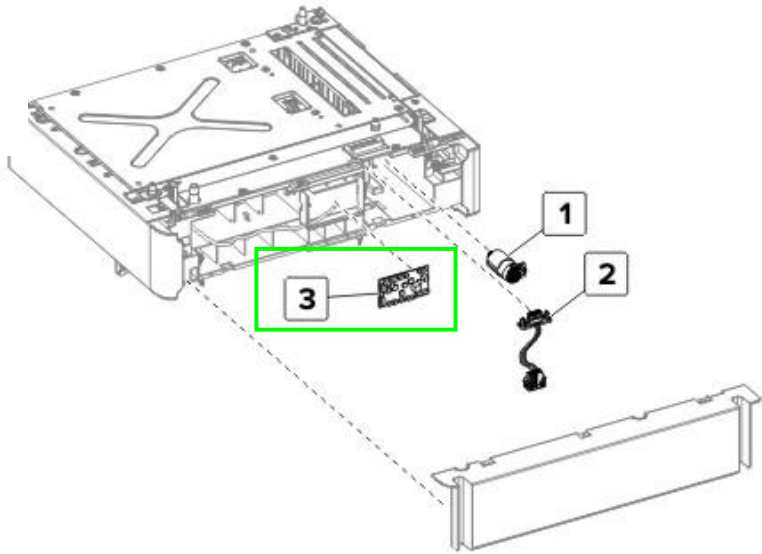
Index	Description
3	550-sheet tray controller board



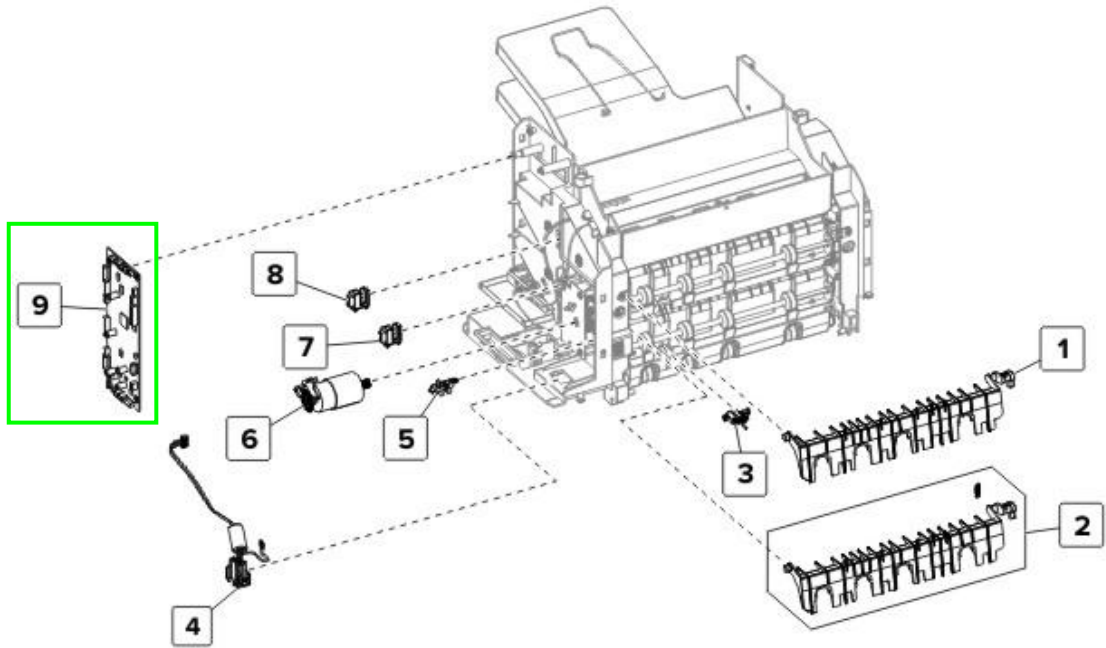
2200-Sheet Tray & Mailbox
Location

Index	Description
3	2200-sheet tray controller board

REAR

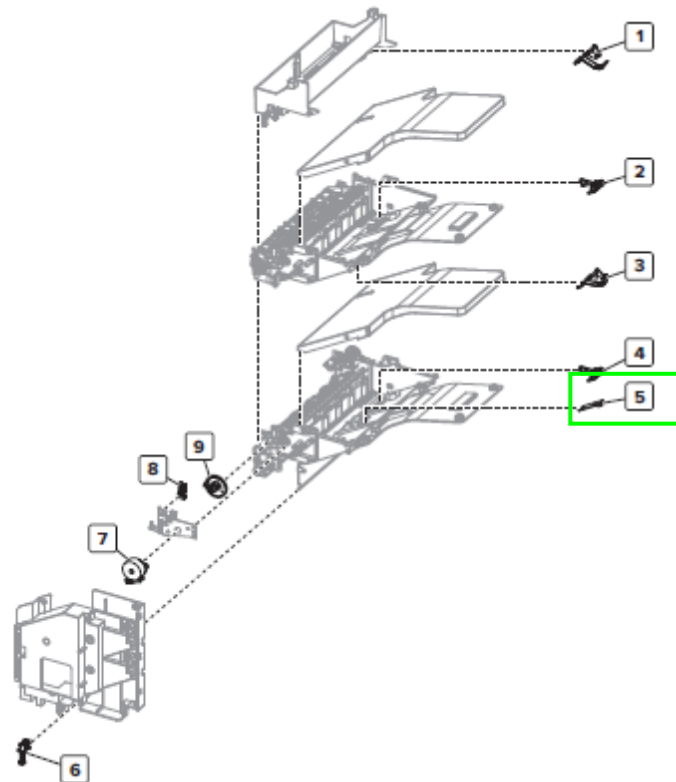


Index	Description
9	Mailbox controller board



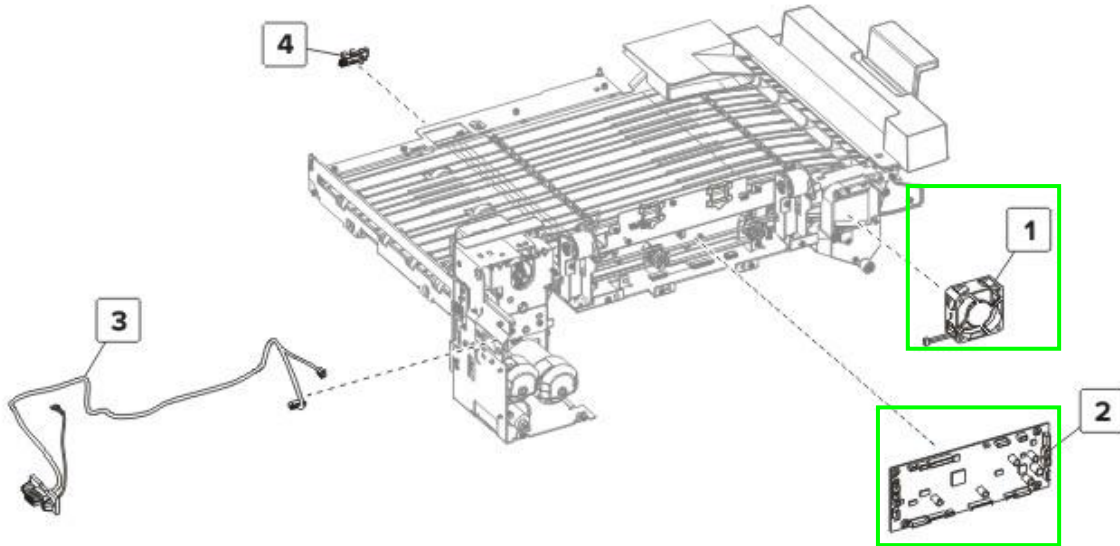
Mailbox Location

Index	Description
5	Bin light board



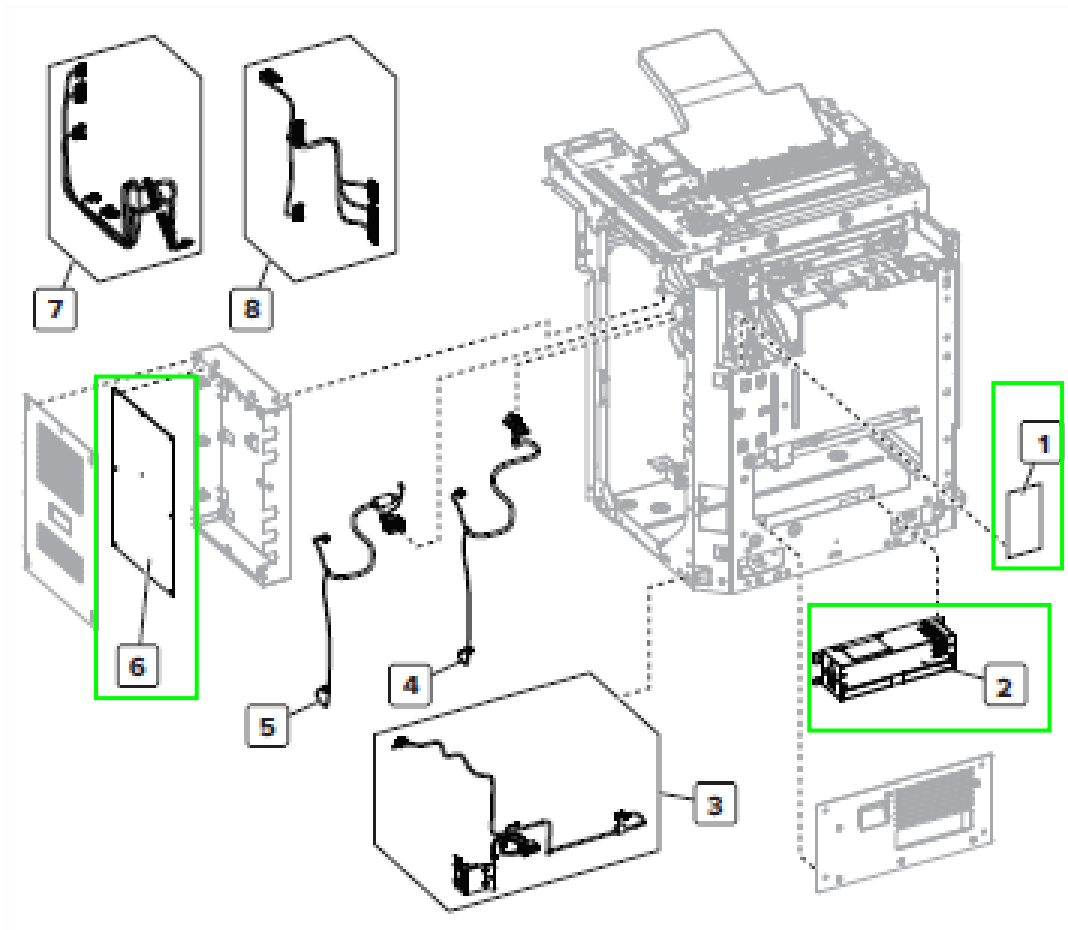
HPT Location

Index	Description
1	HPT fan
3	HPT controller board



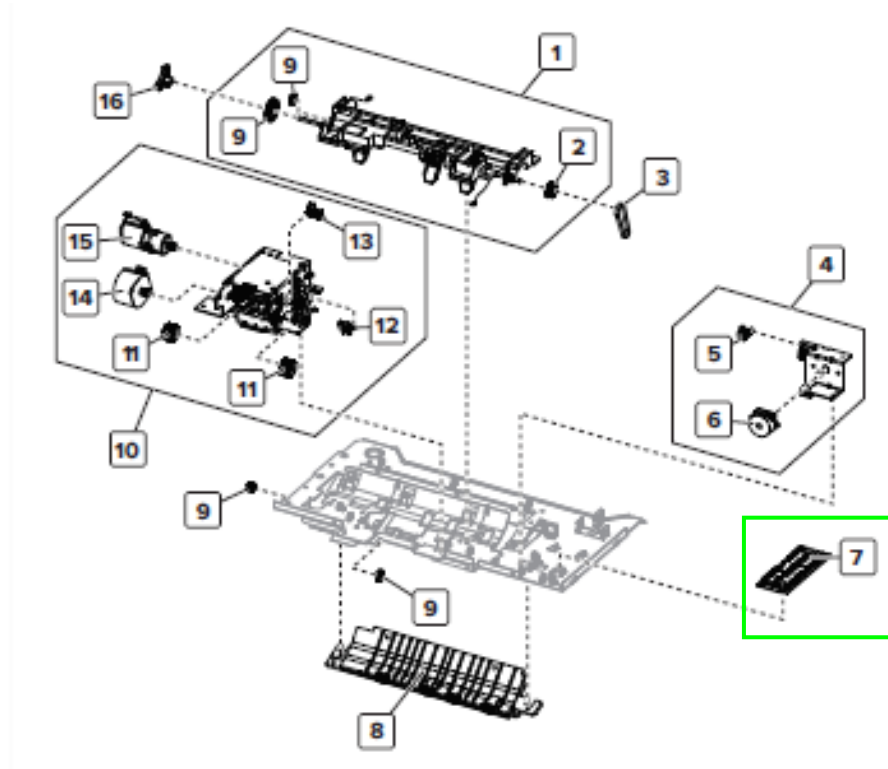
Multi-position Stapler Hole Punch Finisher (MSHPPF) Location

Index	Description
1	Mid-transport interface board
2	MSHPPF Power supply
6	MSHPPF Controller card



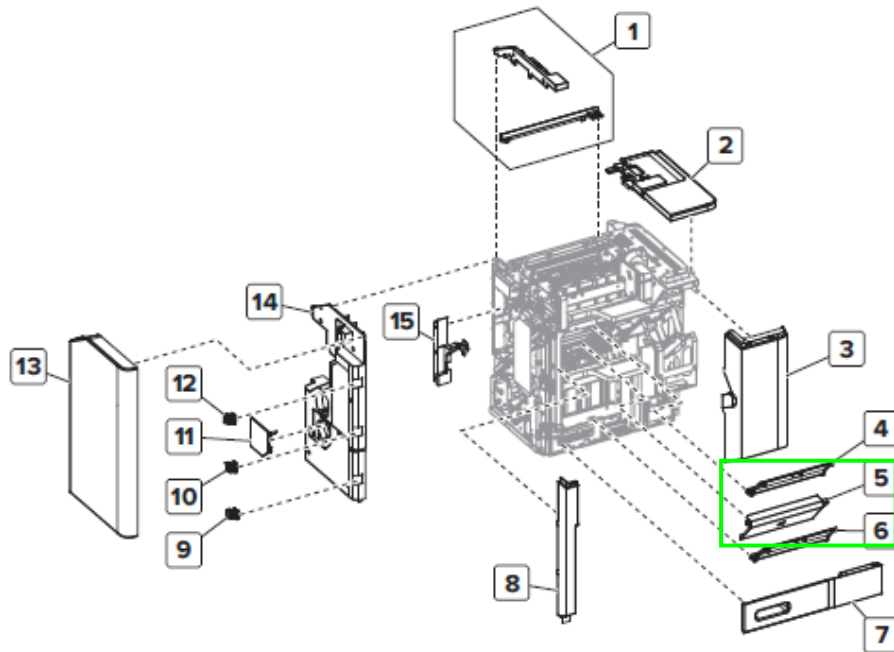
Multi-position Stapler Hole Punch Finisher (MSHPPF) Location

Index	Description
7	Compiler interface board

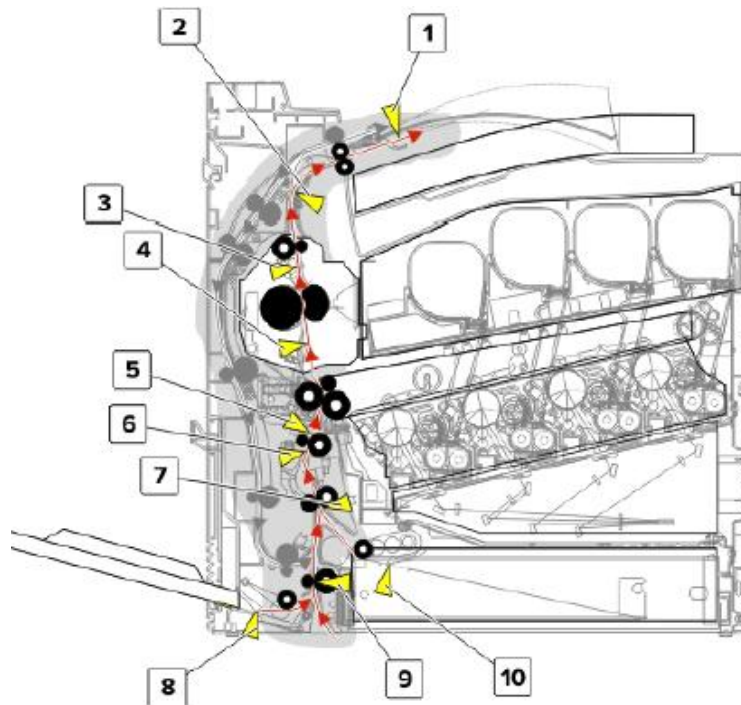


**Multi-position Stapler Hole Punch Finisher (MSHPF)
Location**

Index	Description
5	Bin light board within the Staple bin cave cover



Printer sensors Location



ADF Sensors Location

