



N4050e Wireless Print Server

User's Guide



August 2004

www.lexmark.com

Lexmark and Lexmark with diamond design are trademarks of Lexmark International, Inc., registered in the United States and/or other countries.

© 2004 Lexmark International, Inc.

All rights reserved.

740 West New Circle Road
Lexington, Kentucky 40550

Edition: August 2004

The following paragraph does not apply to any country where such provisions are inconsistent with local law: LEXMARK INTERNATIONAL, INC., PROVIDES THIS PUBLICATION "AS IS" WITHOUT WARRANTY OF ANY KIND, EITHER EXPRESS OR IMPLIED, INCLUDING, BUT NOT LIMITED TO, THE IMPLIED WARRANTIES OF MERCHANTABILITY OR FITNESS FOR A PARTICULAR PURPOSE. Some states do not allow disclaimer of express or implied warranties in certain transactions; therefore, this statement may not apply to you.

This publication could include technical inaccuracies or typographical errors. Changes are periodically made to the information herein; these changes will be incorporated in later editions. Improvements or changes in the products or the programs described may be made at any time.

Comments about this publication may be addressed to Lexmark International, Inc., Department F95/032-2, 740 West New Circle Road, Lexington, Kentucky 40550, U.S.A. In the United Kingdom and Eire, send to Lexmark International Ltd., Marketing and Services Department, Westhorpe House, Westhorpe, Marlow Bucks SL7 3RQ. Lexmark may use or distribute any of the information you supply in any way it believes appropriate without incurring any obligation to you. You can purchase additional copies of publications related to this product by calling 1-800-553-9727. In the United Kingdom and Eire, call 0628-481500. In other countries, contact your point of purchase.

References in this publication to products, programs, or services do not imply that the manufacturer intends to make these available in all countries in which it operates. Any reference to a product, program, or service is not intended to state or imply that only that product, program, or service may be used. Any functionally equivalent product, program, or service that does not infringe any existing intellectual property right may be used instead. Evaluation and verification of operation in conjunction with other products, programs, or services, except those expressly designated by the manufacturer, are the user's responsibility.

Lexmark and Lexmark with diamond design are trademarks of Lexmark International, Inc., registered in the United States and/or other countries.

Wi-Fi® is a registered certification mark of the Wi-Fi Alliance.

Wi-Fi Protected Access™ is a certification mark of the Wi-Fi Alliance.

Other trademarks are the property of their respective owners.

© Copyright 2004 Lexmark International, Inc.

All rights reserved.

UNITED STATES GOVERNMENT RIGHTS

This software and any accompanying documentation provided under this agreement are commercial computer software and documentation developed exclusively at private expense.

Safety information

- Use only the power supply provided with this product or the manufacturer's authorized replacement power supply.
- Connect the power cord to a properly grounded electrical outlet that is near the product and easily accessible.
- Refer service or repairs, other than those described in the user documentation, to a professional service person.

CAUTION: Do not set up this product or make any electrical or cabling connections during a lightning storm.

Electronic emission notices

Wireless notice and FCC statement

Licensing notice

The printer resident software contains:

- Software developed and copyrighted by Lexmark
- Lexmark modified software licensed under the provisions of the GNU General Public License version 2 and the GNU Lesser General Public License version 2.1
- Software licensed under the BSD license and warranty statements

Click the title of the document you want to review:

BSD License and Warranty statements

GNU General Public License

The Lexmark modified GNU licensed software is free software; you can redistribute it and/or modify it under the terms of the licenses referenced above. These licenses do not provide you any rights to the Lexmark copyrighted software in this printer.

Since the GNU licensed software that the Lexmark modifications are based upon is supplied explicitly without warranty, use of the Lexmark modified version is similarly provided without warranty. See the warranty disclaimers in the referenced licenses for additional details.

To obtain source code files for the Lexmark modified GNU licensed software, launch the drivers CD that shipped with your printer and click **Contact Lexmark**.

Other software license statements

Jef Poskanzer

Copyright © 1995,1998,1999,2000 by Jef Poskanzer <jef@acme.com>.

All rights reserved.

Redistribution and use in source and binary forms, with or without modification, are permitted provided that the following conditions are met:

- 1** Redistributions of source code must retain the above copyright notice, this list of conditions and the following disclaimer.
- 2** Redistributions in binary form must reproduce the above copyright notice, this list of conditions and the following disclaimer in the documentation and/or other materials provided with the distribution.

THIS SOFTWARE IS PROVIDED BY THE AUTHOR AND CONTRIBUTORS "AS IS" AND ANY EXPRESS OR IMPLIED WARRANTIES, INCLUDING, BUT NOT LIMITED TO, THE IMPLIED WARRANTIES OF MERCHANTABILITY AND FITNESS FOR A PARTICULAR PURPOSE ARE DISCLAIMED. IN NO EVENT SHALL THE AUTHOR OR CONTRIBUTORS BE LIABLE FOR ANY DIRECT, INDIRECT, INCIDENTAL, SPECIAL, EXEMPLARY, OR CONSEQUENTIAL DAMAGES (INCLUDING, BUT NOT LIMITED TO, PROCUREMENT OF SUBSTITUTE GOODS OR SERVICES; LOSS OF USE, DATA, OR PROFITS; OR BUSINESS INTERRUPTION) HOWEVER CAUSED AND ON ANY THEORY OF LIABILITY, WHETHER IN CONTRACT, STRICT LIABILITY, OR TORT (INCLUDING NEGLIGENCE OR OTHERWISE) ARISING IN ANY WAY OUT OF THE USE OF THIS SOFTWARE, EVEN IF ADVISED OF THE POSSIBILITY OF SUCH DAMAGE.

Apple licensing

The source code for the Multicast DNS Responder software used in this product is available under the terms of the Apple Public Source License version 2.0. This source code may be retrieved via FTP at <ftp://ftp.lexmark.com/swlab/gpl/N4050e/>.

Statement of Limited Warranty

Lexmark International, Inc., Lexington, KY

This warranty applies to the United States and Canada. For customers outside the U.S. and Canada, refer to the country-specific warranty information that came with your printer.

N4050e Print Server

This Statement of Limited Warranty applies to this product if it was originally purchased for your use, and not for resale, from Lexmark or a Lexmark remarketer, referred to in this statement as "Remarketer."

Warranty

Lexmark warrants that this product:

- Is manufactured from new parts, or new and serviceable used parts, which perform like new parts
- Is free from defects in material and workmanship
- Conforms to Lexmark's official published specifications
- Is in good working order

If this product does not function as warranted during the warranty period, contact a Remarketer or Lexmark for repair without charge.

If this product is a feature or option, this statement applies only when that feature or option is used with the product for which it was designed. To obtain warranty service, you may be required to present the feature or option with the product.

If you transfer this product to another user, warranty service under the terms of this statement is available to that user for the remainder of the warranty period. You should transfer proof of original purchase and this statement to that user.

Warranty service

The warranty period is 12 months and starts on the date of original purchase as shown on the purchase receipt.

To obtain warranty service you may be required to present proof of original purchase. Warranty service will be provided at a Remarketer or a Lexmark designated location. You may be required to deliver your product to the Remarketer or Lexmark, or ship it prepaid and suitably packaged to a Lexmark designated location. You are responsible for loss of, or damage to, a product in transit to the Remarketer or the designated location.

When warranty service involves the exchange of a product or part, the item replaced becomes the property of the Remarketer or Lexmark. The replacement may be a new or repaired item. The

replacement item assumes the remaining warranty period of the original product. Replacement is not available to you if the product you present for exchange is defaced, altered, in need of a repair not included in warranty service, or damaged beyond repair. Also, such product must be free of any legal obligation or restrictions that prevent its exchange.

Before you present this product for warranty service, remove all programs, data, and removable storage media. For further explanation of your warranty alternatives and the nearest Lexmark authorized servicer in your area, please contact Lexmark at 1-859-232-3000, or on the World Wide Web at <http://support.lexmark.com>.

Remote technical support is provided for this product throughout its warranty period. Lexmark offers a variety of extended warranty programs that include an extension of technical support. For products no longer covered by a Lexmark warranty, technical support may only be available for a fee.

Extent of warranty

We do not warrant uninterrupted or error-free operation of a product.

Warranty service does not include repair of failures caused by:

- Modification or attachments
- Accidents or misuse
- Unsuitable physical or operating environment
- Maintenance by anyone other than Lexmark or a Lexmark authorized servicer
- Operation of a product beyond the limit of its duty cycle
- Failure to have installed a maintenance kit as specified (if applicable)
- Use of printing media outside of Lexmark specifications
- Use of other than Lexmark supplies (such as toner cartridges, inkjet cartridges, and ribbons)
- Use of other than Lexmark product or component

ALL EXPRESS AND IMPLIED WARRANTIES, INCLUDING THE IMPLIED WARRANTIES OF MERCHANTABILITY AND FITNESS FOR A PARTICULAR PURPOSE, ARE LIMITED IN DURATION TO THE WARRANTY PERIOD. NO WARRANTIES, EXPRESS OR IMPLIED, WILL APPLY AFTER THIS PERIOD.

Limitation of liability

Your sole remedy under this Statement of Limited Warranty is set forth in this section. For any claim concerning performance or nonperformance of Lexmark or a Remarketer for this product under this Statement of Limited Warranty, you may recover actual damages up to the limit set forth in the following paragraph.

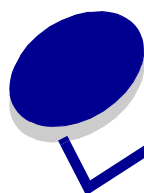
Lexmark's liability for actual damages from any cause whatsoever will be limited to the greater of 1) \$5,000 or 2) the amount you paid for the product that caused the damages. This limitation of liability will not apply to claims by you for bodily injury or damage to real property or tangible personal property for which Lexmark is legally liable. In no event will Lexmark be liable for any lost profits, lost savings, incidental damage, or other economic consequential damages. This is true even if you advise Lexmark or a Remarketer of the possibility of such damages. Lexmark is not liable for any claim by you based on a third party claim.

This limitation of remedies also applies to any developer of materials supplied to Lexmark. Lexmark's and the developer's limitations of remedies are not cumulative. Such developer is an intended beneficiary of this limitation.

Additional rights

Some states do not allow limitations on how long an implied warranty lasts, or do not allow the exclusion or limitation of incidental or consequential damages. If such laws apply, the limitations or exclusions contained in this statement may not apply to you.

This warranty gives you specific legal rights. You may also have other rights which vary from state to state.



Contents

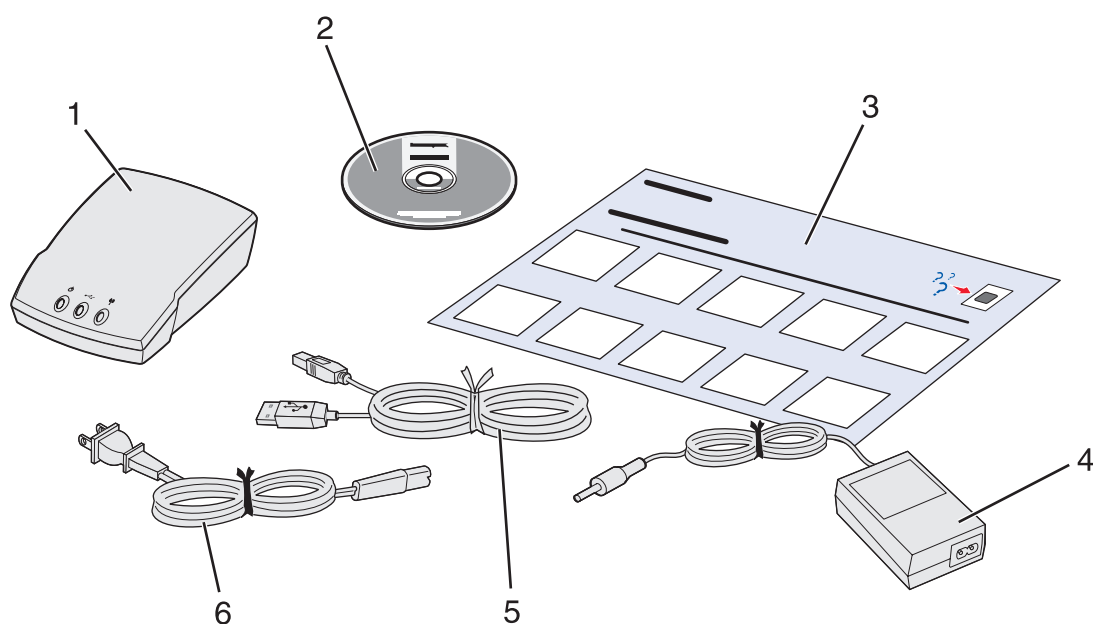
Chapter 1: Getting started.....	1
Unpacking your print server	1
Wireless network settings.....	3
 Chapter 2: Setting up your wireless print server	 4
Setup overview.....	4
Minimum requirements.....	5
Safety information	6
Select a location for your print server.....	6
Configuring your wireless print server	6
 Chapter 3: Changing your wireless print server settings	 13
 Chapter 4: Troubleshooting	 14
Indicator light status	14
The <i>Setup Utility</i> CD does not auto launch	14
The Setup Utility Wizard was not able to communicate with the print server	15
My network key was invalid.....	15
My wireless print server was unable to join the network	15
The print server was configured correctly, but cannot be found on the network.....	16
No printer was found attached to the print server	16
My network printer does not print.....	16
The correct print server listing is not present when running the printer software or drivers CD	17
 Chapter 5: Advanced Setup	 18

Configuring the print server in Ad-Hoc mode	18
Installing your printer on the network	20
Glossary.....	21

1

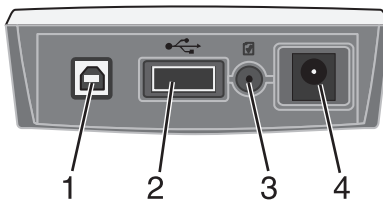
Getting started

Unpacking your print server



Number	Description
1	N4050e Print Server
2	N4050e Setup Utility CD
3	Setup Sheet
4	Power supply
5	USB cable
6	Power cord wall adapter

Understanding the print server ports



Number	Part	Description
1	USB port (to computer)	Connects your print server to a computer for initial configuration and network setup. Use USB port 2 to connect your print server to your printer.
2	USB port (to printer)	Connects your print server to your printer.
3	Test button	To print a test page, press and release the test button once. Note: Test pages are printed in ASCII. Your printer must support ASCII printing to print a test page. To reset the print server to the factory default settings: 1 Disconnect the power supply. 2 Reconnect the power supply while pressing the test button. 3 Continue holding the test button until only the power indicator light is lit.
4	Power cord connector	Connects the print server to the power supply.

Understanding the print server indicator lights



Number	Part	Description
1	Power Indicator	The print server has power.
2	USB status	The print server is connected by USB and is communicating.
3	Wireless status	The print server is communicating wirelessly.

Wireless network settings

You may need to know some of your wireless network settings in order to set up your wireless print server. Here are some of the settings that you may need to know:

For basic setup:

- Network Name, also known as SSID (Service Set ID)
- Security type
 - None
 - WEP (Wired Equivalency Protocol)
 - WPA (Wi-Fi Protected Access)
- Security Key(s)

For advanced setup:

- Basic setup settings listed above
- BSS (Basic Service Set) Type (the type of wireless network you use—Ad-Hoc or Infrastructure)
- Wireless Channel Number

2

Setting up your wireless print server

Setup overview

The setup process consists of two parts: configuring your wireless print server and installing your printer on the network. The configuration segment involves connecting the print server to a computer by USB cable and running the Wireless Print Server Setup Wizard to configure the device and test the wireless connection. The installation segment involves connecting the print server to the printer that you want to install and running the printer drivers or printer software CD to install it as a network printer.

Basic setup accommodates both Infrastructure mode (in which the network structure is based on a series of wireless routers or base stations) as well as Ad-Hoc mode (in which wireless devices communicate with each other directly without using a wireless router).



Infrastructure mode



Ad-Hoc mode

While basic setup is the recommended process, if your operating system does not support basic setup, it is possible to set up your wireless print server without using the USB connection and Setup Wizard to complete the configuration process. For instructions on setting up your wireless print server through an alternate configuration method, see [Advanced Setup](#).

Before setting up your wireless print server, make sure your printer has been set up correctly

- The toner or print cartridges are installed correctly.
- Paper has been loaded into the printer.
- Your printer is turned on and ready to be installed.

For help setting up your printer, refer to your printer documentation.

Minimum requirements

- The Lexmark Wireless Print Server
- An existing wireless network
 - The following security types are supported:
 - No security
 - WEP (64-bit or 128-bit security keys)
 - WPA (Wi-Fi Protected Access)—(PSK–TKIP)
- A network-capable printer
- The Lexmark N4050e *Setup Utility* CD
- The drivers or printer software CD that came with your printer
- A computer that utilizes one of the following operating systems:
 - Windows 98 SE or Windows Me
 - Windows 2000
 - Windows XP
 - One of the following UNIX or Linux systems

Operating system	Version number
RedHat Linux	7.2, 7.3, 8.0, 9
RedHat Enterprise	3.0, WS
SuSE Linux	8.0, 8.1, 8.2, 9.0
IBM AIX	5.1, 5.2
HP–UX	11.0, 11.1
Sun Solaris SPARC	7, 8, 9

Safety information

- Use only the power supply provided with this product or the manufacturer's authorized replacement power supply.
- Connect the power cord to a properly grounded electrical outlet that is near the product and easily accessible.
- Refer service or repairs, other than those described in the user documentation, to a professional service person.

CAUTION: Do not set up this product or make any electrical or cabling connections during a lightning storm.

Select a location for your print server

The location of your print server is vital to ensuring that it works effectively. Follow these guidelines when determining a location for your print server:

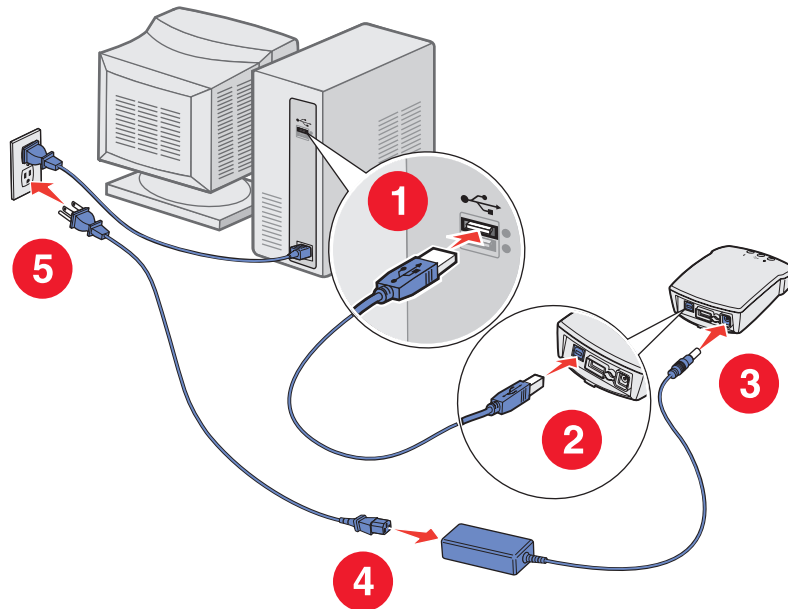
- Place the print server on a flat, level surface away from excessive heat, cold, and moisture.
- Keep the print server within appropriate range of a wireless access point if your network uses an Infrastructure configuration.
- Keep the print server away from other electronic devices that could interfere with the wireless signal.
- Keep the print server away from obstructions that could interfere with the wireless signal.

Configuring your wireless print server

Note: If you are using your print server with a third-party printer, see **Installing third-party network printers** before proceeding with the configuration process.

Connect your print server to your computer

- 1 Connect the print server to your computer using the provided USB cable.
- 2 Connect the print server to its power supply.
- 3 Use the N4050e Wireless Print Server Setup Wizard to complete the configuration.



Special instructions for Windows 98 SE, Me:

The device driver required for communicating with a USB device is not installed by default for Windows 98, Windows 98/SE, or Windows Me. If you have not previously used a USB device with this operating system, you may need to insert your operating system CD to install the necessary device driver.

If the driver is not installed on your system, when the Print server is plugged in, the **Add New Hardware Wizard** will appear. Proceed through the wizard until it prompts you to insert your operating system CD. Once the driver is installed, you can proceed with setup normally.

Using the N4050e Wireless Print Server Setup Wizard

- 1 Insert the N4050e *Setup Utility* CD.
- 2 The CD will auto-launch. Click **Install N4050e Utility**.
- 3 Click **Agree** to accept the license agreement.
- 4 Click **Finish** to install the files and launch the setup utility.
- 5 The N4050e Wireless Print Server Setup Wizard welcome screen will appear. Click **Next** to access your current wireless settings.
- 6 Select the appropriate **Network Name (SSID)** from the list, and then click **Next**.


Lexmark N4050e Wireless Print Server Setup Wizard

Wireless Configurations Found on Your Computer
Select a configuration for your wireless print server.

The computer you are using is configured for use on one or more wireless networks. Select an existing configuration for your wireless print server from the list below, or choose to enter a different configuration.

Network Name (SSID)	Channel	Security	Mode	Active
Home1	Auto	WEP	Ad-Hoc	No

☒ The configuration I want to use is in the list
☐ I want to use a different configuration

 Depending on your operating system and wireless configuration, the wizard may or may not be able to determine the necessary security network keys.

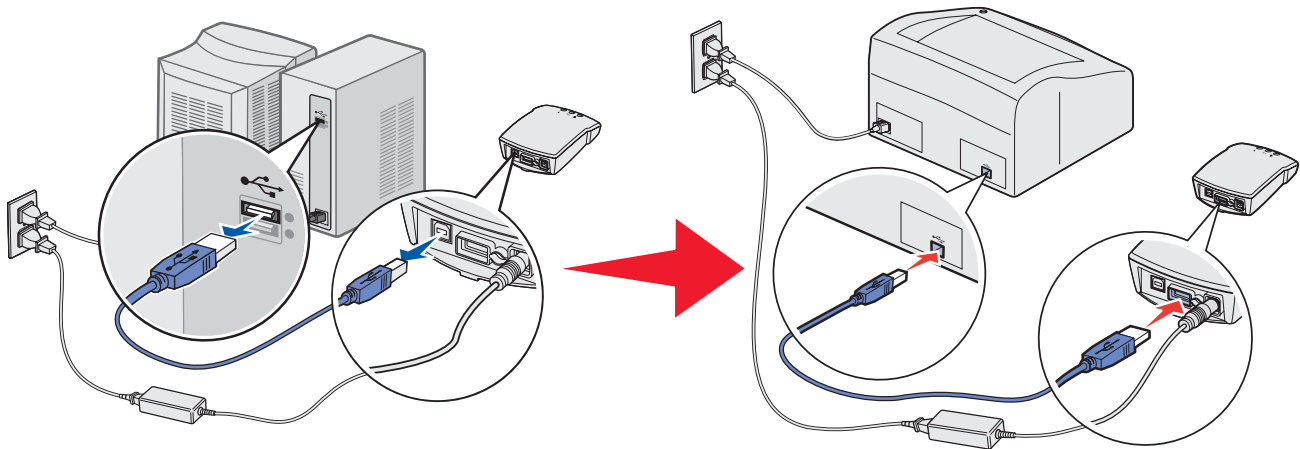
Troubleshooting tip:

If the Network Name you want to use is not in the list, select the **I want to enter a different configuration** radio button, and then click **Next**.

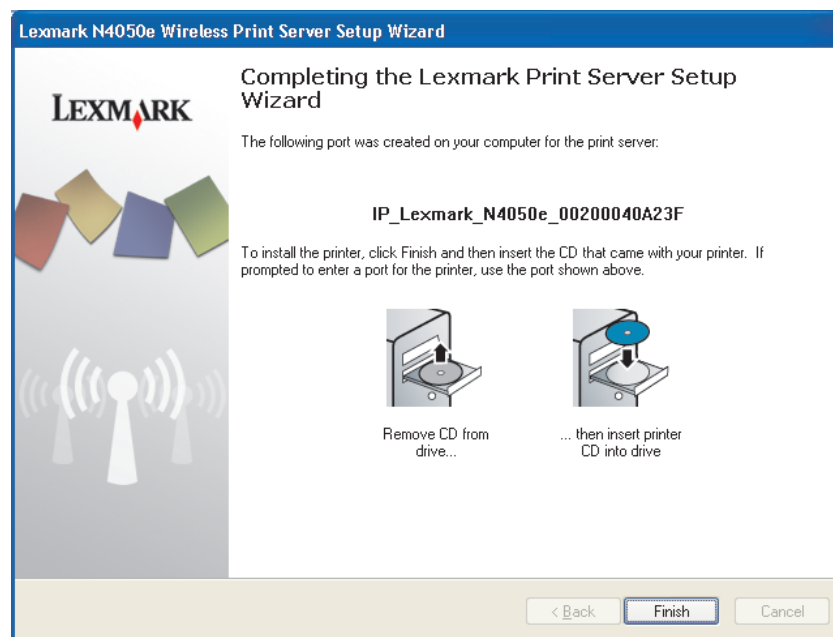
If the correct Network Name still does not appear, see [Entering alternate network settings](#).

- 7** Select the appropriate security method, and then click **Next**. If no security was detected, go to step 8.
- 8** Enter the appropriate security key(s) for your network, and then click **Next**.
- 9** Check each network attribute on the summary screen to make sure that the settings are correct. If the settings are correct, click **Next** to apply these settings to your print server.
- 10** Disconnect the USB cable from both your computer and the print server.

- 11 Use the same cable to connect the print server to your printer. To make this connection, insert the large end of the USB cable into the middle USB port on the back of the print server, and then insert the small end of the USB cable into your printer.



- 12 Click **Next** to continue with the Setup Utility Wizard.
- 13 Write down the port or MAC address information displayed on the screen. This information will be needed when installing your printer on the network.

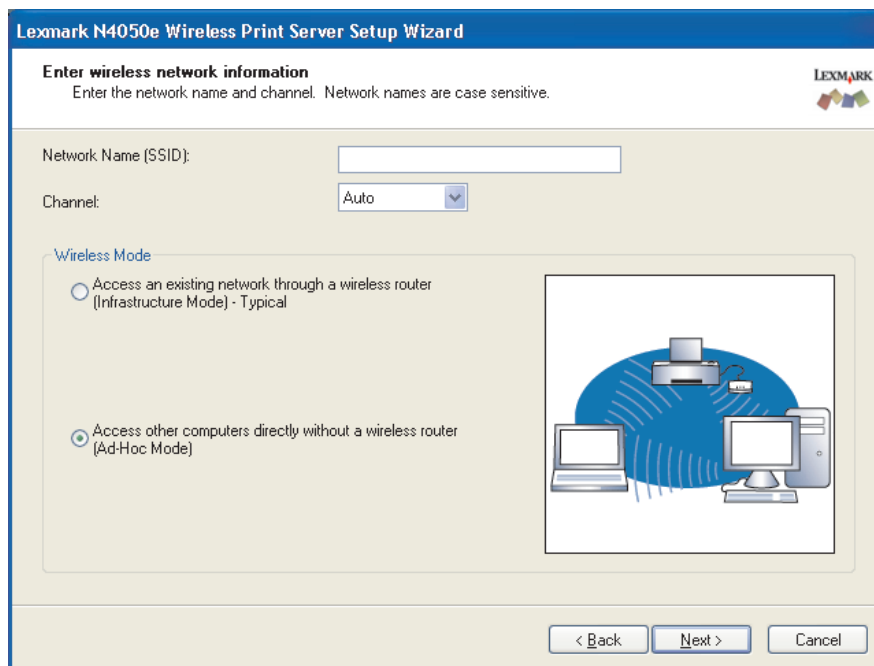


- 14 Click **Finish** to close the N4050e Setup Utility Wizard.
- 15 Remove the Setup Utility CD from your computer, insert your printer drivers CD or printer software CD, and proceed to **Installing your printer on the network**.

Entering alternate network settings

Once you have started the N4050eWireless Print Server Setup Utility, and the Wizard has collected and displayed your existing wireless settings, if the network configuration you want to use is not available, you have the option to enter a different network configuration.

- 1 After the Setup Wizard performs the site survey, select the option to enter a different configuration.
 - If wireless network configurations were found on your computer:
From the Wireless Configurations Found on your Computer screen, Select the **I want to enter a different configuration** radio button, and then click **Next**.
 - If no wireless network configurations were found on your computer:
From the Wireless Networks Found in Your Area screen, select the **I want to enter a different network name** radio button, and then click **Next**, and then skip to step 3.
- 2 From the *Wireless Networks Found in Your Area* screen, select the **I want to enter a different network name** radio button, and then click **Next**.
- 3 Enter the Network Name (SSID) of the Network that you want to use.



- 4 Select the appropriate channel for the network.
- 5 Select the wireless mode for your network (Infrastructure or Ad-Hoc mode).
- 6 Click **Next**.
- 7 Select the type of security that your network uses, and then click **Next**.

- 8 If security was selected, enter the appropriate security key(s), and then click **Next**. If no security was selected, proceed to step 9.
- 9 Check each network attribute on the summary screen to make sure that the settings are correct. If the settings are correct, click **Next** to apply these settings to your print server.
- 10 Disconnect the USB cable from both your computer and the print server.
- 11 Use the same cable to connect the print server to your printer. To make this connection, insert the large end of the USB cable into the middle USB port on the back of the print server, and then insert the small end of the USB cable into your printer.
- 12 Click **Next** to continue with the Setup Utility Wizard.
- 13 Write down the port or MAC address information displayed on the screen. This information will be needed when installing your printer on the network.
- 14 Remove the *Setup Utility* CD from your computer, and insert your printer drivers CD or printer software CD.
- 15 Click **Finish** to close the Setup Utility Wizard, and proceed to **Installing your printer on the network**.

Installing your printer on the network

Once the print server has been configured, use the printer drivers CD or printer software CD that came with your printer to install your network printer on the computers attached to your network.

- Make sure that your printer drivers CD or printer software CD is inserted into the computer you want to install the printer for.
- When installing the printer, follow the **Network** installation path. This process can vary between different printers.

Installing your network printer on additional network computers

If you are installing your network printer for use with multiple computers on the network, you will need to repeat the **Installing your printer on the network** process for each computer you want to have access to the printer. The wireless print server does not need to be reconfigured for each successive installation.

Installing third-party network printers

If you are using the N4050e wireless print server with a third-party printer, you will need to use an alternate setup process to complete the installation of your printer on your network. Third-party printers must first be installed as a local printer, directly attached to your computer, before the wireless print server is configured and connected to the printer. The printer port that the printer uses

must then be changed to match the port that is created by the N4050e Wireless Print Server Setup Utility.

- 1** Refer to your printer documentation for instructions on installing your printer as a locally attached printer (not over a network).
- 2** Connect the printer to your computer using the provided USB cable.
- 3** Insert your printer software or drivers CD and follow the **local** installation path.
- 4** Disconnect the printer from your computer.
- 5** Connect the print server to your computer and follow the instructions for **Configuring your wireless print server**, and then proceed to step 6.

Note: Be sure to write down the port information that is provided on the final screen of the Setup Utility Wizard. The port name provided will be needed to complete the third-party printer setup process.

- 6** In your operating system, change the current printer port that was designated during printer installation from step 3 to the port that was provided by the setup utility wizard. For example:

To change your printer port

- a** Go to your **Printers** folder.
- b** Right-click the printer icon that was created when the printer was installed in step 3.
- c** Select **Properties**.
- d** Select the **Ports** tab.
- e** Change the selected port to the port provided by the setup utility wizard.
- f** Save or apply the changes.

Once the port has been changed, we recommend that you print a test page to verify that the printer is communicating correctly. Make sure that the print server is correctly attached to the printer to ensure that the printer can communicate over the network effectively.

3

Changing your wireless print server settings

The easiest way to change settings in the wireless print server is through the embedded Web server. For this to work, you must successfully complete the installation of the print server on your network.

- 1 Enter the IP address of the print server in a browser window. The embedded Web page for the print server will open.

For information on locating the IP address of the print server, see [Finding the network printer IP address](#) below.

- 2 Select the settings you want to change, such as IP address.
- 3 Enter the changes, and then click **Submit**.

Finding the network printer IP address

Using the IP Setup Utility

The IP Setup Utility is installed in addition to the N4050e Wireless Setup Utility Wizard when you run the *Setup Utility* CD. You can use this utility to find the IP address of your print server.

- 1 Launch the IP Setup Utility. For example:

In Windows operating systems go to **Start → Programs → Lexmark → , Lexmark Wireless Print Server N4050e → IP Setup Utility**.

The IP Setup Utility will discover all Lexmark print servers on the network. A list of print servers, including their MAC and IP addresses, will be displayed.

- 2 Select your print server from the list.
- 3 Click **Launch Web Page**.

Printing a network setup page

Once the print server and printer are connected, for most printers, press and release the test button on the back of the print server to print a network setup page.

Note: If you have not successfully completed the installation of this product on the wireless network, the IP address may not be listed on the network setup page.

4

Troubleshooting

Use this section to solve problems you may have while setting up your print server.

Indicator light status

Indicator light pattern	State	Result
Power indicator	Off	The Print Server does not have power. Make sure that the power cord is attached correctly and is plugged into an outlet with power.
USB status	Off	The USB cable connecting the print server to either the printer or the computer is not secure. Make sure that the USB cable is connected correctly on both ends.
	On	The USB cable connecting the print server to the printer or computer is secure and recognized by the USB port.
	Blinking	A print job is active.
Wireless status	Off	The print server is searching for a network connection, or no network connection is available.
	On	The print server is connected to the network.
USB status and Wireless status	Blinking alternately	The print server has experienced an error. Power the print server off and back on again. If the problem continues, contact the Customer Support Center.

Note: To locate the Power and USB indicator lights, see [Understanding the print server indicator lights](#).

The Setup Utility CD does not auto launch

- 1 Close all open software programs.
- 2 Reinsert the *Setup Utility* CD. If the setup utility screen appears, continue your setup instructions.

If the setup utility screen does not appear, do the following:

- a** From your desktop, double-click **My Computer**.
- b** Double-click the CD-ROM drive icon.
- c** If necessary, double-click **setup.exe**.

The Setup Utility Wizard was not able to communicate with the print server

- Verify that the print server has power and that the power indicator light is lit.
- Verify that the USB cable is properly connected to both your computer and the wireless print server.
- Connect the print server to a different USB port on your computer.

My network key was invalid

A network key is like a password and should follow this criteria:

- WEP key
 - Exactly 5 or 13 ASCII characters
 - Or
 - Exactly 10 or 26 Hexadecimal characters (using A–F and 0–9 only)
- WPA-PSK key (for infrastructure mode only)
 - Between 8 and 63 ASCII characters

My wireless print server was unable to join the network

There are many factors that can prevent the print server from joining the network. Here are some of the most common troubleshooting options:

- Verify that the print server settings match those used by your wireless network.
- Verify that the print server is within range of the network.
- If your network uses MAC address filtering, provide the MAC address for the print server to your network. The MAC address can be found on the bottom of the print server.

The print server was configured correctly, but cannot be found on the network

- Verify that the print server has power and that the power indicator light is on.
- Verify that the print server is within range of the wireless network.
- Verify that the print server is located away from other electronic devices that may interfere with the wireless signal.
- Verify that your wireless network is using a unique network name (SSID). If not, it is possible that the print server is communicating over a different, nearby network that uses the same network name.
- Verify that the print server has a valid IP address on the network.

No printer was found attached to the print server

- Verify that the USB cable is properly connected to both the printer and the print server.
- Verify that the printer has power.
- Verify that the printer was set up correctly.
- Verify that the print server has power and is available on your network.

My network printer does not print

- Make sure all cables to the printer, print server, electrical outlet, and network connection are secure.
- Make sure the Power, USB, and Wireless status indicator lights are on.
- Check the printer status.
- Make sure the network is operating properly.

Refer to your network documentation, or contact the person who set up your network if you are not sure that your network is operating correctly.

- Make sure the printer driver is installed on the computer from which you are sending the print job.

Note: You must install the printer driver on each computer that uses the network printer.

- Make sure the correct printer port is selected.
- Restart the computer.
- Uninstall and then reinstall the printer software.

If the printer still does not print, refer to your printer documentation for help.

The print server was configured correctly, but cannot be found on the network

- Make sure there is not a problem with the printer itself.
 - 1 Disconnect the printer from the printer adapter.
 - 2 Attach the printer directly to your computer with a USB cable, and perform a local printer installation.

If you are able to print when the printer is directly attached, there may be a problem with your network. Refer to your network documentation, or contact your network administrator.

The correct print server listing is not present when running the printer software or drivers CD

If you are using the print server with a third-party printer, the drivers CD that came with the printer may not recognize the print server. See [Installing third-party network printers](#) for alternate setup information.

5

Advanced Setup

The wireless print server is shipped with default settings that let you configure it in Ad-Hoc mode by accessing the embedded Web page of the print server.

Like basic setup, this method involves first configuring the print server and then installing the printer on the network. However, because this configuration method does not use a direct USB connection to your computer or the Wireless Print Server Setup Utility, you will be required to access several of the wireless settings on both your computer and your network. As a result, extensive knowledge of your wireless network and computer settings will be needed.

Note: To configure the wireless print server by this method, you must have a computer with a wireless network card.

Configuring the print server in Ad-Hoc mode

- 1 Connect the print server to the printer with the USB cable, and turn on the printer.
- 2 Make sure the print server power indicator light is on.
- 3 Access and record your computer's current wireless network parameters.

For information on accessing your current wireless network parameters, refer to your wireless network documentation, or contact the person who set up your network.

- 4 Change your current wireless network parameters to the following values:

Wireless network parameter	Set to
SSID (Network Name or Service Set ID)	print server
Basic Service Set Type (BSST)	Ad-Hoc
Data Encryption Mode	None
WEP Key	None

5 Check the IP address of the print server.

The print server will be assigned an IP address through the AutoIP method. This address should be in the range of 169.254. You can access the print server IP address by one of the following methods:

- Press and release the **Test** button on the back of the print server to print a setup page showing the print server IP address.
- Use the IP Setup Utility located on the N4050e *Setup Utility* CD to display the print server IP address.

6 Make sure your PC has assigned itself a different IP address than the print server, but is still within the same IP range. For example:

Device	IP address
Computer	169.254.1.1
Print server	169.254.1.4

If your computer IP address is not within the same range as the print server, you will need to change the IP address so that it is within the appropriate range.

For information on locating and changing your computer IP address, refer to your computer or operating system documentation.

7 Open a Web browser, and enter the print server IP address as the URL to access the embedded Web page of the print server.

8 Click the **Settings** link on the left side of the Web page.

9 Under Print Server Settings, click the **Wireless** link.

10 Change the listed network settings to match your wireless network, including:

- SSID
- BSS type
- Channel Number
- Encryption Mode

Note: The SSID must be entered exactly as it is used on your network. SSIDs are case-sensitive, so if the SSID is entered incorrectly, the print server will not be able to communicate on the network and the configuration process must be repeated.

11 Click **Submit**.

12 Wait 10 seconds while the adapter resets.

13 Restore your computer's wireless network settings back to the original values you recorded in step 3.

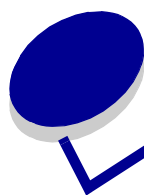
Installing your printer on the network

Once the print server has been configured, use the printer drivers CD or printer software CD that came with your printer to install the printer on the computers attached to your network.

- Make sure that your printer drivers CD or printer software CD is inserted into the computer you want to install the printer for.
- When installing the printer, follow the **Network** installation path. This process may vary between different printers.

Installing your network printer on additional network computers

If you are installing your network printer for use with multiple computers on the network, you will need to repeat the **Installing your printer on the network** process for each computer you want to have access to the printer. The wireless print server does not need to be reconfigured for each successive installation.



Glossary

Ad-Hoc network. A stand-alone or peer-to-peer network in which wireless devices communicate directly with one another without using a wireless access point or base station.

ASCII. A standard character set consisting of 96 uppercase and lowercase letters, plus 32 nonprinting control characters.

BSS Type. Basic Service Set, the type of wireless network that you are using. The BSS type can be one of the following:

- Infrastructure network
- Ad-Hoc network

Channel number. A number associated with the radio frequency at which an 802.11 device operates. The channel numbers available vary by geographical region.

Data Encryption mode. The security protocol that is used to protect data that is transferred across your wireless network and provide network authentication. You can use one of the following protocols for data encryption:

- None
- Shared—WEP (Wired Equivalency Protocol)
- WPA-Personal (TKIP:PSK)—WPA (Wi-Fi Protected Access) in PSK (Pre-Shared Key) mode

DHCP. Dynamic Host Configuration Protocol, a protocol for assigning dynamic IP addresses to devices on a network. With dynamic addressing, a device can automatically request an IP address every time it connects to the network. This means that a new device can be added to a network without having to manually assign a unique IP address.

Hexadecimal. A numbering system that is used as a representation of binary numbers using a base of 16 digits.

Infrastructure network. A network in which your wireless devices communicate through a central wireless access point or base station. An infrastructure network can contain multiple wireless access points.

IP address. A number that identifies each device connected to the network. For example, 192.168.0.1.

MAC address. A 12-character identifier that is unique for each network hardware device. For example, 0002001008e8.

Network authentication type. The data encryption mode that is used on your network to prevent unauthorized users or devices from connecting to or accessing your wireless network. You can use one of the following protocols for network authentication:

- None
- WEP
- WPA (Infrastructure mode networks only)

network-capable printer. A printing device that does not need to be locally attached to a computer.

printer port. Windows terminology for a physical or logical connection to a printer. For example:

- LPT1 indicates the printer is attached to a physical parallel port with a parallel cable.
- USB001 indicates the printer is attached to a physical USB port with a USB cable.
- Print_Server_E320_0020000035D0 indicates a logical connection to the printer across your network.

PSK. Pre-Shared Key, a permanent security key or password that a user enters to establish security keys in a WPA environment.

Security key. A security key is like a password used with either WPA or WEP security protocols and must meet the following criteria:

- For WPA keys, if using Hexadecimal characters, valid keys are at least 24 characters long; if using ASCII, valid keys are between 8 and 63 characters long. WPA authentication is not supported for Ad-Hoc configurations.
- For WEP keys, if using Hex characters, valid keys are either 10 or 26 characters long; if using ASCII, valid keys are either 5 or 13 characters long.

subnet. A portion of a network that shares a common address component. On TCP/IP networks, subnets are defined as all devices whose IP addresses have the same prefix. For example, all devices with IP addresses that start with 192.168.0. would typically be part of the same subnet.

SSID. Service Set ID, also known as Network name, is a unique identifier used to distinguish one wireless network from another. Wireless devices must use the same SSID to communicate. SSIDs are up to 32 characters long, and are case-sensitive.

TCP/IP. The Transmission Control Protocol (TCP) and the Internet Protocol (IP) are protocols that let different types of computers communicate with each other. The Internet is based on this suite of protocols.

TKIP. Temporal Key Integrity Protocol, a protocol used with the WPA data encryption mode that scrambles security keys using a hashing algorithm and adds an integrity-checking feature that ensures the keys haven't been tampered with.

WEP. Wired Equivalency Protocol, a security protocol defined in the original 802.11b specification that is used to provide data encryption and user authentication.

WPA. Wi-Fi Protected Access, a security protocol for wireless networks defined by the Wi-Fi Alliance that was designed to improve upon the WEP security protocol through improved data encryption and user authentication.



This certificate represents the capabilities and features that have passed the interoperability testing governed by the Wi-Fi Alliance. Detailed descriptions of these features can be found at www.wi-fi.org/certificate

Certification Date: September 18, 2004
Category: Wireless Printers and Print Servers
Company: Lexmark International, Inc.
Product: Lexmark N4050e

This product has passed Wi-Fi certification testing for the following standards:

IEEE Standard	Security		
802.11b 802.11g	WPA™ - Personal		