

Lexmark Z52

Color Jetprinter

User's Guide for Windows 95 and Windows 98

Edition: December 1999

The following paragraph does not apply to any country where such provisions are inconsistent with local law: LEXMARK INTERNATIONAL, INC., PROVIDES THIS PUBLICATION “AS IS” WITHOUT WARRANTY OF ANY KIND, EITHER EXPRESS OR IMPLIED, INCLUDING, BUT NOT LIMITED TO, THE IMPLIED WARRANTIES OF MERCHANTABILITY OR FITNESS FOR A PARTICULAR PURPOSE. Some states do not allow disclaimer of express or implied warranties in certain transactions; therefore, this statement may not apply to you.

This publication could include technical inaccuracies or typographical errors. Changes are periodically made to the information herein; these changes will be incorporated in later editions. Improvements or changes in the products or the programs described may be made at any time.

References in this publication to products, programs, or services do not imply that the manufacturer intends to make these available in all countries in which it operates. Any reference to a product, program, or service is not intended to state or imply that only that product, program, or service may be used. Any functionally equivalent product, program, or service that does not infringe any existing intellectual property right may be used instead. Evaluation and verification of operation in conjunction with other products, programs, or services, except those expressly designated by the manufacturer, are the user’s responsibility.

Lexmark, Lexmark with diamond design, and ColorFine are trademarks of Lexmark International, Inc., registered in the United States and/or other countries. Color Jetprinter is a trademark of Lexmark International, Inc.

Other trademarks are the property of their respective owners.

© Copyright 1999 Lexmark International, Inc. All rights reserved.

UNITED STATES GOVERNMENT RESTRICTED RIGHTS

This software and documentation are provided with RESTRICTED RIGHTS. Use, duplication or disclosure by the Government is subject to restrictions as set forth in subparagraph (c)(1)(ii) of the Rights in Technical Data and Computer Software clause at DFARS 252.227-7013 and in applicable FAR provisions: Lexmark International, Inc., Lexington, KY 40550.

Statement of limited warranty 36

Electronic emission notices 38

Energy star 39

Safety information 39

Index 41

Steps to basic printing



- Windows NT 4.0 or Windows 2000, refer to the User's Guide button on the Printer Software CD for Windows.
- Macintosh OS 8.6 or higher, refer to the User's Guide icon found in the desktop Lexmark Z52 folder.

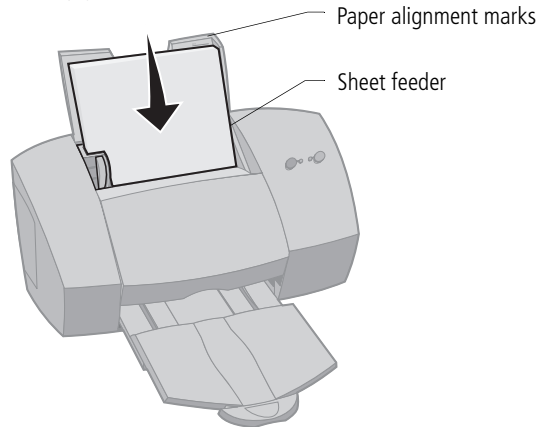
Basic printing is as easy as:

- 1 Load the paper (see the next section)
- 2 Customize the Printer Properties (see page 5)
- 3 Print your document (see page 8)

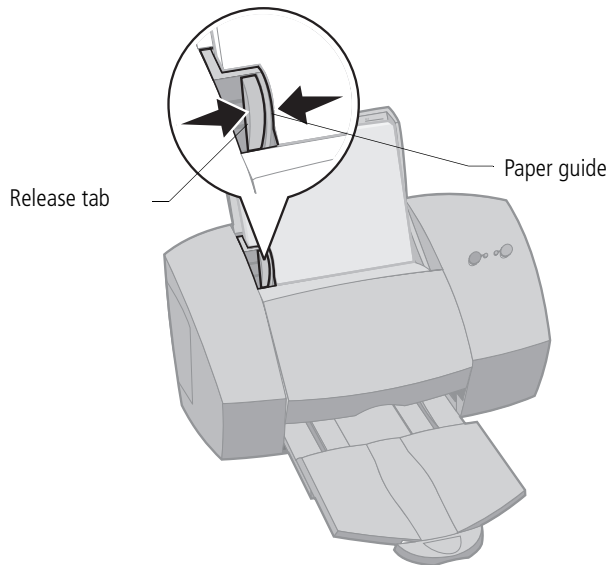
Step One: Load the paper

You can load up to 100 sheets of paper (depending on thickness).

- 1 Place the paper against the right side of the sheet feeder, with the print side facing you.

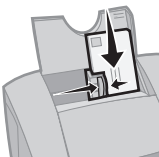
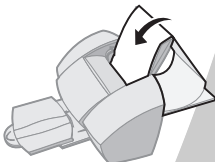


- 2 Squeeze the release tab and the paper guide together and slide the paper guide to the edge of the paper.



Loading specialty papers

Follow these guidelines when loading specialty papers:

Load up to:	Make sure:
10 envelopes	<ul style="list-style-type: none"> the print side is facing you. the envelopes are loaded vertically against the right side of the sheet feeder and the paper guide is against the edge of the envelopes. The stamp location is in the upper left corner. 
10 greeting cards, index cards, postcards, or photo cards	<ul style="list-style-type: none"> the print side is facing you. the cards are loaded vertically against the right side of the sheet feeder and the paper guide is against the edge of the cards.
25 sheets of photo paper	<ul style="list-style-type: none"> the print side is facing you. the paper guide is against the edge of the paper.
20 sheets of banner paper	<ul style="list-style-type: none"> you place the paper behind the printer. Bring the unattached edge of the first page over the printer, and into the sheet feeder. the paper guide is against the edge of the paper.  <p>Note: Select Banner or Banner A4 paper size in the Printer Properties.</p>
10 transparencies	<ul style="list-style-type: none"> the rough side of the transparency is facing you (smooth side down). the paper guide is against the edge of the transparencies.

Load up to:	Make sure:
up to 100 sheets of custom-sized paper	<ul style="list-style-type: none"> the print side is facing you and the paper guide is against the side of the paper. your paper size fits within these dimensions: <ul style="list-style-type: none"> Width dimensions: 76 mm to 216 mm 3.0" to 8.5" Length dimensions: 127 mm to 432 mm 5.0" to 17.0"
25 iron-on transfers	<ul style="list-style-type: none"> you load the iron-on transfers following the instructions on the package. the paper guide is against the side of the iron-on transfers.

Step Two: Customize the Printer Properties

Your printer software includes several applications that let you easily perform printing tasks. One of these applications is called Printer Properties.

The Printer Properties application include four tabs: Job Finishing, Paper, Document/Quality, and Advanced. Each tab contains settings relating to the operation of your printer and its software.

Opening the Printer Properties

You can open the Printer Properties from almost every application. This lets you change printer settings **ONLY** for the document(s) you are currently creating in the application. To open the Printer Properties from an application:

- 1 Open the application's **File** menu.
- 2 Choose **Print** (or **Printer**) **Setup**.
- 3 In the Printer Setup dialog box, click the **Properties**, **Option**, or **Setup** button (depending on the application).
- 4 Change settings as needed.

When you open the Printer Properties from Windows, the settings apply to ALL documents, unless you change them from the application. To open the Printer Properties from Windows:

- 1 From the Start menu, select **Settings**, and then select **Printers**.
- 2 From the Printers folder, right-click the printer icon for your printer.
- 3 Select **Properties** from the sidebar menu.

Click the...

Paper tab to:

- Select a paper size and orientation
- Set the number of copies to print
- Reverse the printing order of your document pages. The first page of your document will be on top of the stack in the paper exit tray.
- Collate your document

Document/Quality tab to select:

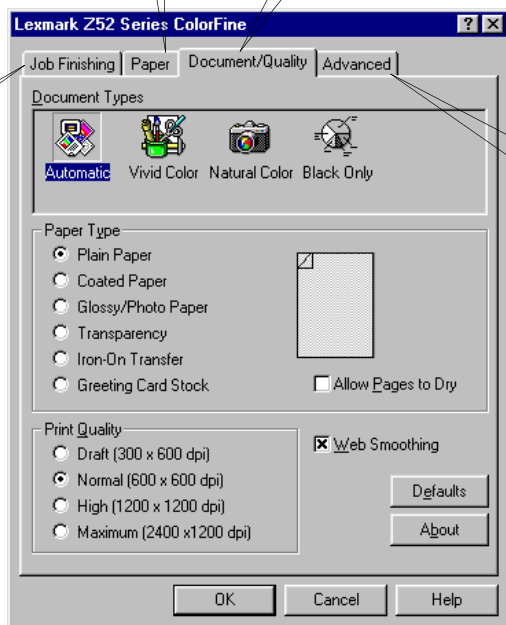
- Color settings for the document type you are printing
- The paper type you are using
- A print quality setting
- Web Smoothing when you are printing from the internet
- Allow Pages to Dry
- The default settings

Job Finishing tab to print:

- Handouts
- Posters
- Booklets
- Two-sided documents

Advanced tab to adjust:

- Halftone settings
- Image settings



Choosing printer settings for specialty papers

When your printer software was first installed, the Printer Properties settings were set to the default settings. Use the default settings for printing most documents on plain paper. To change your printer settings for printing on specialty papers, use the following table:

When you are printing on this specialty paper:	Click this Printer Properties tab:	To make these selections:
Envelopes	Paper	From the Paper Size area, scroll to select the appropriate envelope size. Note: Many applications are designed to override the envelope settings in Printer Properties.
Greeting cards, index cards, or postcards	Document/Quality	From the Paper Type area, select Greeting Card Stock.
	Paper	Select the appropriate Paper Size setting.
Photo papers	Document/Quality	From the Paper Type area, select Glossy/Photo Paper. Note: You can print quality photos with the black and color cartridge combination that came with your printer. However, for the best possible print quality, replace the black cartridge with a photo cartridge. For help, see page 22.
Banner paper	Paper	From the list of Paper Sizes, select Banner or Banner A4.

When you are printing on this specialty paper:	Click this Printer Properties tab:	To make these selections:
Sheets of custom size paper	Paper	From the list of Paper Sizes, scroll to select Custom. Enter the dimensions for your custom paper size. For help, see "Loading specialty papers" on page 3.
Iron-on transfers	Document/Quality	From the Paper Type area, select Iron-On Transfer.
Transparencies	Document/Quality	<p>From the Paper Type area, select Transparency.</p> <p>Select Normal (600 x 600 dpi), High (1200 x 1200 dpi), or Maximum (2400 x 1200 dpi) Print Quality.</p> <p>Note: When printing transparencies, remove each transparency as it exits from the printer and allow it to dry before stacking.</p>

Step Three: Print your document

- 1 From your application's **File** menu, click **Print**.
- 2 From the Print dialog box, click **OK** or **Print** (depending on the application).

You can use your printer to print:

- on both sides of a sheet of paper (see the next section)
- handouts (see page 12)
- booklets (see page 15)
- posters (see page 18)

Printing on both sides of a sheet of paper

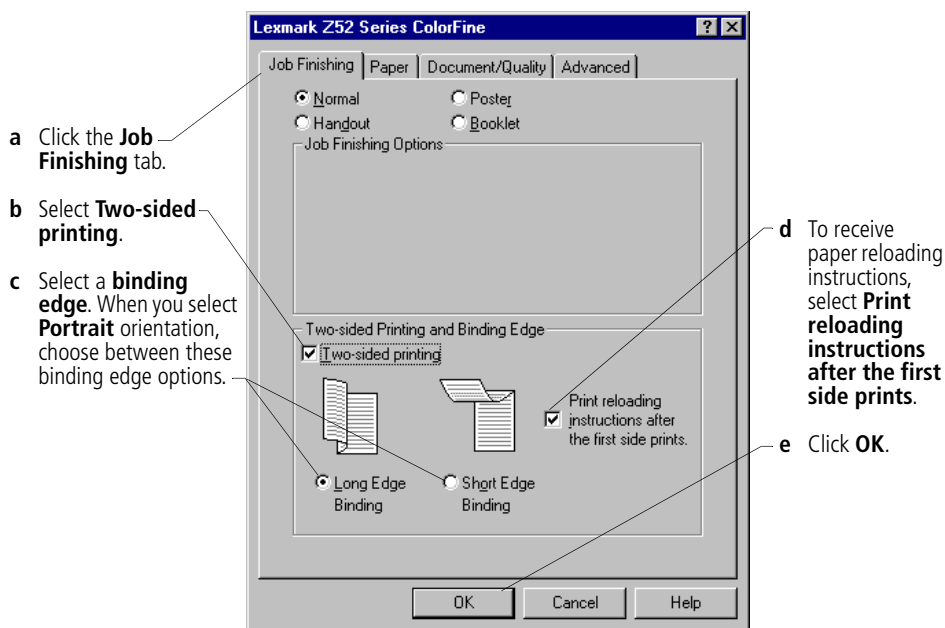
Your Lexmark printer lets you print on both sides of a sheet of paper. Besides saving paper, this feature is helpful when you want to print booklets or tablets.

Step One: Load the paper

Load up to 100 sheets of paper against the right side of the sheet feeder. For help, see page 2.

Step Two: Customize the Printer Properties for your two-sided print job

- 1 Open the Printer Properties. For help, see page 5.
- 2 Select the page orientation and size:
 - a Click the **Paper** tab.
 - b Select the appropriate **Paper Size**.
 - c Select **Portrait** or **Landscape** orientation.
- 3 Customize the Printer Properties for two-sided printing:



Note: When you select **Landscape** orientation, choose between these binding edge options:



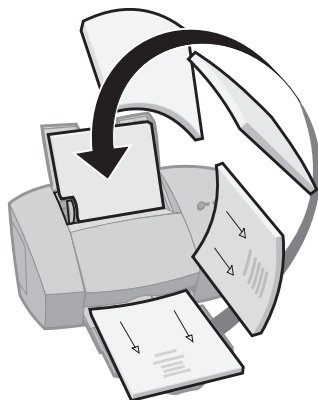
Long Edge Binding



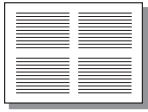
Short Edge Binding

Step Three: Print your two-sided document

- 1 From your application's **File** menu, select **Print**. The odd-numbered pages print first.
- 2 When the first side of all your two-sided document is finished printing, your printer software prompts you to reload the paper.
 - a When the entire stack is finished printing, remove the stack.
 - b Flip the stack of paper.
 - c Insert the stack of paper and instruction page with the printed side facing away from you and the arrows pointing down.
- 3 Click **OK**. The even-numbered pages print on the other side.
- 4 To return to single-sided printing:
 - a From the Printer Properties, click the **Job Finishing** tab.
 - b Make sure **Two-sided printing** is **not** selected.
 - c Click **OK**.



Printing handouts



Four page images on a single sheet of paper

You can conserve paper by printing handouts or multiple page images on a single sheet of paper.

Step One: Load the paper

Load up to 100 sheets of paper against the right side of the sheet feeder. For help, see page 2.

Step Two: Customize the Printer Properties for handouts

You can print your handouts on one side of the paper, or on both sides of the paper.

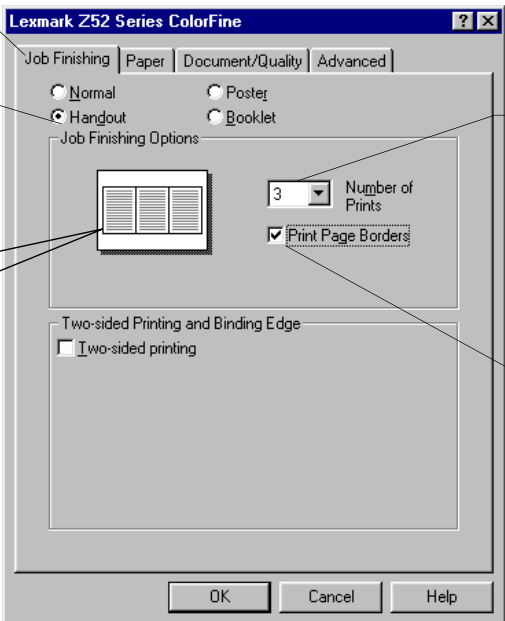
- 1 Open the Printer Properties. For help, see page 5.
- 2 Select the page orientation for the page images:
The page orientation you select in the Paper tab reflects the orientation of the page image and **not** the sheet of paper the page image prints on.
 - a Click the **Paper** tab.
 - b From the **Orientation** area, select **Portrait** or **Landscape**.
- 3 From the **Paper Size** area, select a paper size.

- 4 Customize the Printer Properties for printing handouts:
The screen graphic changes as you make selections, showing how the printed page will look.

a Click the **Job Finishing** tab.

b Select **Handout**.

The graphic shows three **Portrait**-oriented page images with **Page Borders**.



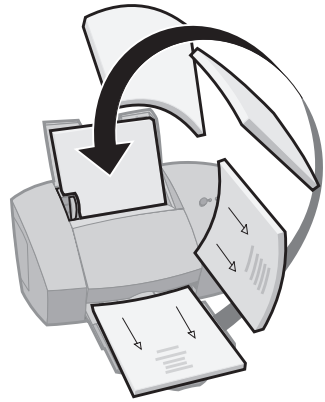
c Select the **Number of Prints** (page images) to print on a single sheet.

d To print a representation of the paper edges for each page image, select **Print Page Borders**.

- 5 To print your handout on one side of the paper, click **OK**.
To print your handout on both sides of the paper:
 - a Select **Two-sided printing**.
 - b To receive paper reloading instructions, select **Print reloading instructions after the first side prints**.
 - c Click **Long Edge Binding** or **Short Edge Binding**.
 - d Click **OK**.

Step Three: Print your handouts

- 1 From your application's **File** menu, select **Print**.
- 2 From the Print dialog box, click **OK** or **Print** (depending on the application).
 - If you formatted your handouts to print on one side of each page, go to step 5.
 - If you formatted your handouts for two-sided printing, continue with printing the second side of your handouts.
- 3 When the first side of all your handouts is finished printing, your printer software prompts you to reload the paper.
 - a When the entire stack is finished printing, remove the stack.
 - b Flip the stack of paper.
 - c Insert the stack of paper and instruction page with the printed side facing away from you and the arrows pointing down.
- 4 Click **OK**. The even-numbered pages print on the other side.
- 5 To go back to normal printing:
 - a From the **Job Finishing** tab, select **Normal**.
 - b Click **OK**.



Printing booklets



You can print and bundle your document together to make a booklet.

Step One: Load the paper

Load up to 100 sheets of paper against the right side of the sheet feeder. For help, see page 2.

Step Two: Customize your Printer Properties

- 1 Select the correct paper size in your software application. You can select from these paper sizes when printing booklets:
 - Statement
 - Letter
 - A4
 - A5
- 2 Open the Printer Properties. For help, see page 5.
- 3 Click the **Job Finishing** tab.
- 4 Select **Booklet**.
- 5 To receive paper reloading instructions, click **Print reloading instructions after the first side prints**.
- 6 Select the number of **Sheets Per Bundle**.

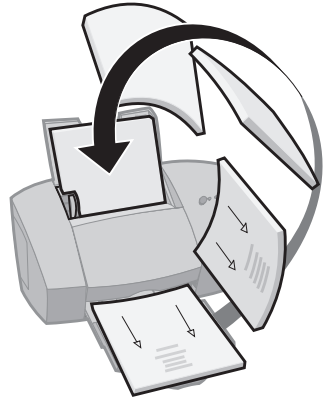
Notes: A bundle is any number of sheets of paper folded together. For help, see page 17.

When printing with a heavier paper stock, select a smaller number of Sheets Per Bundle to allow for binding considerations.

- 7 Click **OK**.

Step Three: Print your booklet

- 1 From your application's **File** menu, select **Print**.
- 2 From the Print dialog box, click **OK** or **Print** (depending on the application).
- 3 When the first side of your booklet is finished printing, your printer software prompts you to reload the paper.
 - a When the entire stack is finished printing, remove the stack.
 - b Flip the stack of paper.
 - c Insert the stack of paper and instruction page with the printed side facing away from you and the arrows pointing down.
- 4 Click **OK**. The even-numbered pages print on the other side.
- 5 To go back to normal printing:
 - a From the **Job Finishing** tab, select **Normal**.
 - b Click **OK**.
- 6 Assemble your booklet. For help, see page 17.



Building a booklet

Once your document prints, stack the bundles together and bind your booklet.

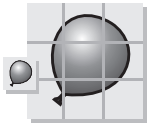


Five bundles stacked to form a booklet.



- 1 Take the first bundle from the paper exit tray, fold it in half and set it aside.
- 2 Take the next bundle, fold it in half, and stack it on top of the first bundle.
- 3 Stack the rest of your bundles, one on top of the other, until your booklet is complete.
- 4 Bind the bundles together to complete your booklet.

Printing posters



A single page enlarged to a nine page poster.

You can use the printer software to enlarge the size of your printout. For example, you can enlarge a photograph to poster size.

Note: The poster finishing option is designed to print a single-page as a 4, 9, or 16-page poster.

Step One: Load the paper

Load up to 100 sheets of paper against the right side of the sheet feeder. For help, see page 2.

Note: For the best print quality, use a heavy-weight paper.

Step two: Customize the Printer Properties for your poster

- 1 Open the Printer Properties. For help, see page 5.
- 2 Click the **Job Finishing** tab.
- 3 Select **Poster**.
- 4 Select your poster size.

The number you select represents the number of pages that make up the height and width of your poster. For example, if you select 4 x 4, your printed poster is four pages high and four pages wide.

- 5 Select **Show Crop Marks** if you want to print markers that show you where to easily trim (crop) the unprinted white space from the edges of the paper.
- 6 Click **OK**.



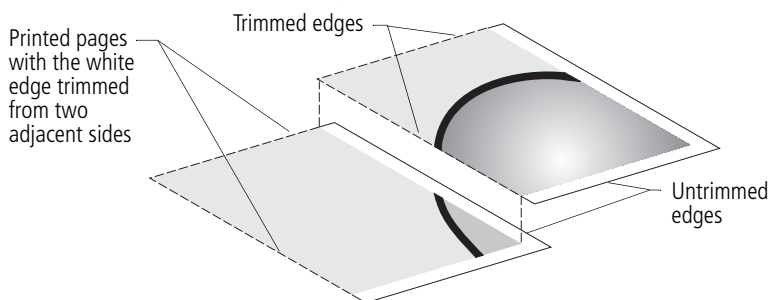
Crop marks make it easy to trim the poster pages.

Step Three: Print and assemble your poster

- 1 From your application's **File** menu, select **Print**.
- 2 From the Print dialog box, click **OK** or **Print** (depending on the application).

Note: If you need to reprint a specific page(s) of your poster, skip to the next section.

- 3 On each printed page, trim the white edges from two adjacent sides.
For example, trim the white edge from the top and left sides of each page.

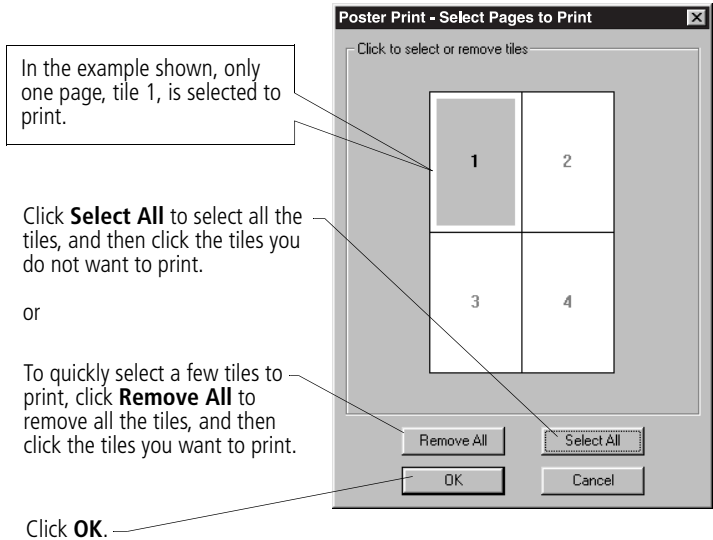


- 4 Arrange the pages so that every trimmed edge overlaps an untrimmed edge (the white edge).
- 5 Tape the backs of the pages together.
- 6 To complete your poster, trim any remaining white edges.

Selecting specific pages to print

You can reprint specific pages of your poster without having to reprint all of the pages of your poster. To select specific pages to print:

- 1 From the **Job Finishing** tab, click **Select Pages to Print**.
- 2 From the Select Pages to Print screen:



- 3 Print your poster page(s).
- 4 Assemble your poster. For help, see page 19.
- 5 To go back to regular printing:
 - a From the **Job Finishing** tab, select **Normal**.
 - b Click **OK**.

Using the Control Program

The Control Program lets you monitor your printer, and install or replace print cartridges. To open the Control Program from the **Start** menu, click:

- 1 **Programs.**
- 2 **Lexmark Z52 Series.**
- 3 **Lexmark Z52 Control Program.**

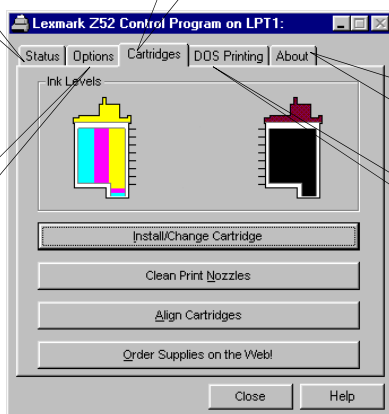
Click the...

Status tab to:

- Monitor the status of your print job
- Cancel your print job
- Print a test page
- View your ink levels

Cartridges tab to:

- Install or replace print cartridges
- Align print cartridges for best print quality
- Clean the print nozzles
- View cartridge part numbers and order supplies directly from Lexmark's Web site



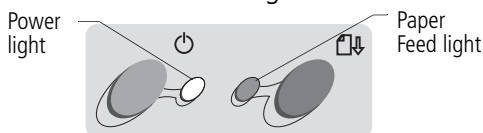
Options tab to enable/disable various printer software functions, such as Sound Effects and Buffer Mode.

About tab to find printer software version and copyright information.

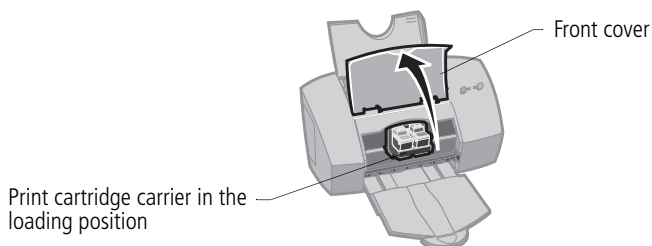
DOS Printing tab to change settings for DOS printing.

Installing or replacing print cartridges

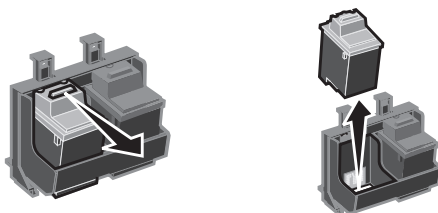
- 1 Make sure the Power light is On.



- 2 Raise the front cover. The print cartridge carrier moves to the loading position unless the printer is busy.



- 3 Remove the old print cartridge. Store or dispose of the old cartridge.



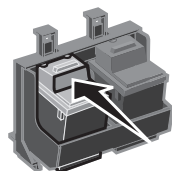
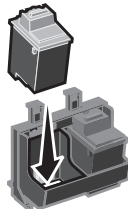
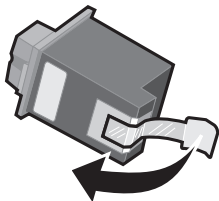
- 4 Install the replacement cartridge in the printer:

If you are installing a new cartridge, remove **only** the sticker and transparent tape from the bottom of the print cartridge.

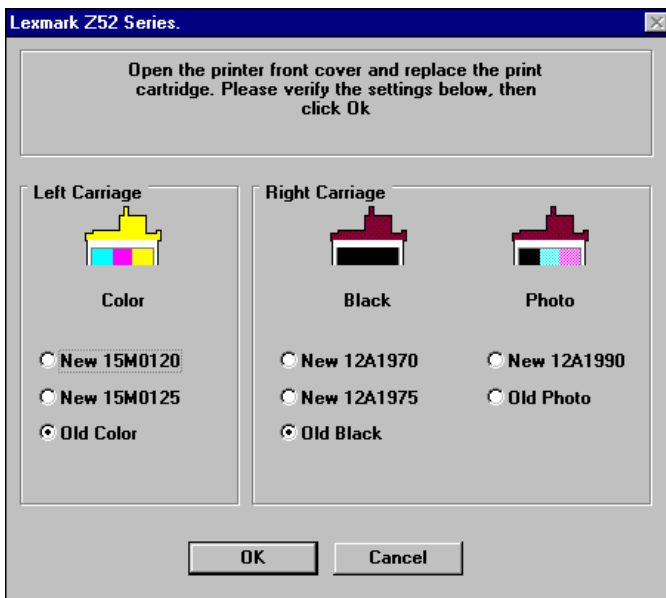
Insert the replacement print cartridge into the print cartridge carrier.

Push back firmly on the cartridge until it **snaps** securely into place.

Warning: DO NOT touch the gold contact area on the print cartridge.



- 5 From the Control Program's Cartridges tab, select **Install/Change Cartridge**. For help, see page 21. Select the cartridge type you installed and click **OK**.

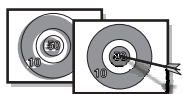


- 6 If you installed a new cartridge, the Alignment dialog box displays. Follow the instructions on the Alignment screen to complete the cartridge installation. For help, see page 24.

Improving print quality

If the print quality is not satisfactory, a simple cartridge alignment may improve print quality. If print quality still is not satisfactory after aligning the print cartridges, you may need to clean the print nozzles.

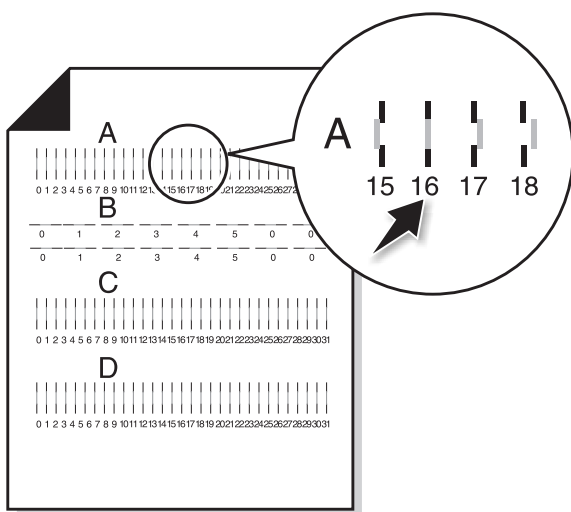
Aligning print cartridges



- 1 Load plain paper in the printer.
- 2 From the Control Program's **Cartridges** tab, select **Align Cartridges**. For help, see page 21.

Your printer prints an alignment test page and the Align Cartridge dialog box displays.

The test page that prints has several alignment patterns, depending on the cartridge combination installed. Each pattern has a number under it. The test page that prints is similar to the one shown:

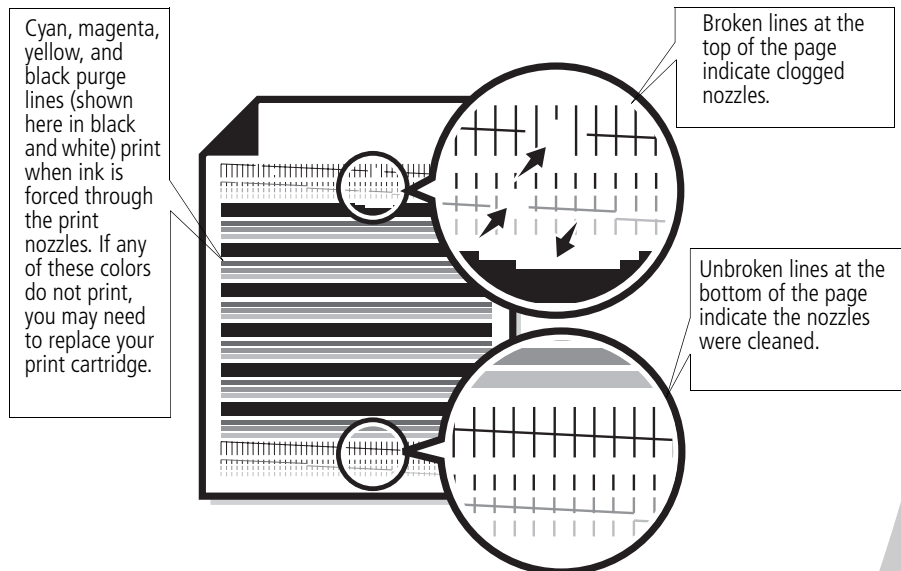


- 3 From each alignment group on the test page, find the number under the alignment pattern that comes closest to forming a perfectly straight line.
For example, in sample group **A**, the arrow points to the pattern that comes closest to forming a straight line.
- 4 In the Align Cartridges dialog box, enter the pattern numbers from the printed test page that come closest to forming a straight line.
- 5 After you have entered a number for all of the patterns, click **OK**.

Cleaning print nozzles

- 1 Load plain paper in the printer.
- 2 From the Control Program's **Cartridges** tab, select **Clean Print Nozzles**. For help, see page 21.

The printer feeds a sheet of paper and prints a nozzle test pattern, similar to the one shown:



- 3 Compare the diagonal line above the printed bars to the diagonal line below the printed bars.
Look for a break in the diagonal lines above the printed bars. A broken line indicates clogged nozzles.
If the bottom line still has breaks, run the test up to two more times.
 - If the print quality is satisfactory after running the test three times, the print nozzles are clean. You do not need to complete the remaining steps.
 - If the print quality of both lines is not satisfactory after running the test three times, continue with step 4.
- 4 Remove and reinstall the print cartridges.

- 5 Repeat the nozzle test.
- 6 If the lines are still broken, wipe the print cartridge nozzles. For help, see the next section.

Wiping print nozzles

If print quality does not improve after cleaning the print nozzles (see page 25), there may be dried ink on the print cartridge nozzles. For help on wiping the print nozzles, see the Troubleshooting: Print Quality section of the printer driver Help.

Preserving print cartridges

To ensure the longest life from your print cartridge and optimum performance from your printer:

- Keep a new print cartridge in its packaging until you are ready to install it.
- Do not remove a print cartridge from the printer except to replace, clean, or store it in an air-tight container. The print cartridge does not print correctly if removed from the printer and left exposed for an extended period of time.
- If a print cartridge runs out of ink, leave the empty cartridge in the printer until you are ready to replace it. Printing with one of the print cartridge carriers empty may cause printer problems.

Lexmark's printer warranty does not cover repair of failures or damage caused by a refilled cartridge. Lexmark does not recommend use of refilled cartridges. Refilling cartridges can affect print quality and cause damage to the printer. For best results, use Lexmark supplies.

4

Troubleshooting

Printer prints slowly or doesn't print (see page 28)

Paper misfeeds or jams (see page 30)

Document prints with mistakes or poor quality (see page 31)

Problems with transparencies, photos, envelopes... (see page 33)

Error messages and flashing lights (see page 34)

This section lists printer problems, and what you can do to solve them. From the list of printing problems in the left margin, select a category that describes your printing problem. Read the category for help finding the solution.

When your printer has a problem, first make sure that:

- The power supply is plugged into the printer and a properly grounded electrical outlet.
- The printer is turned On.
- If you are using a parallel cable, make sure it is an IEEE 1284-compliant parallel cable that supports bidirectional printing.
- Two-way communications is NOT disabled in your printer software.
 - 1 From the printer's **Control Program**, click the **Options** tab.
 - 2 Make sure **Disable Printer to PC Communications** is **not** checked.

Printer prints slowly or doesn't print



If your printer does not print, your printer and your computer may not be able to communicate properly.

The following events also indicate two-way communications problems:

- A message displays on your computer screen indicating your printer cannot establish bidirectional communications with your computer.
- Print cartridge ink level indicators on the Status or Cartridges tabs of the printer's Control Program are shaded.
- Error messages (such as Paper Out) and job progress information do not display on your computer screen.

Before proceeding, verify that:

- The parallel, or USB, cable is securely attached to both the printer and the personal computer.
- The printer is plugged in and turned On.
- Your printer port is set to an LPTn port for a parallel cable, and to a USB port for a USB cable.

If you have a switch box or other device (such as a scanner or fax) connected to the computer's parallel port, make sure it supports bidirectional communication. You may need to disconnect your printer from the switch box or other device and connect it directly to your computer.

Printer ejects a blank page after appearing to print

Make sure:

- You have removed the sticker and transparent tape from the bottom of the print cartridges. For help, see page 22.
- You have selected your Lexmark printer driver as the default printer.



Printer is plugged in but doesn't print, or you get a Printer Offline message

Make sure:

- The printer is turned On, and has paper loaded correctly.
- The parallel, or USB, cable is completely plugged into the printer.
- The printer is not being held or paused. To check the printer status:
 - 1 From the Printers folder, double-click the **Lexmark Z52 icon**.
 - 2 Click the **Printer** menu and make sure no check mark appears next to the **Pause Printing** option.

Print a test page. If the test page prints, the printer is functioning properly. Check your application.

Test page does not print

Make sure:

- Your print cartridges are properly installed. For help, see page 22.
- Your cable is correct and not damaged. If you are using a parallel cable, make sure it is an IEEE 1284-compliant parallel cable that supports bidirectional printing.

Printer prints very slowly

If you are printing photos or your document contains graphics, it may take longer to print than regular text.

- Close any open applications.
- Decrease the Print Quality setting.
- Consider purchasing more memory, or increasing the virtual memory for your computer.

Paper misfeeds or jams



Paper misfeeds or pulls multiple sheets while moving through the printer

Make sure:

- You are using a paper recommended for inkjet printers.
- You do not force the paper down into the printer when you load it. Align the top of the paper with the paper alignment guides on the paper support.
- You do not load too much paper in the sheet feeder. Depending on the thickness of your paper, the sheet feeder can hold up to 100 sheets of paper.
- The left paper guide is against the side of the paper and it does not cause the paper to bow in the sheet feeder.
- The printer is on a flat, level surface.

Printer does not feed envelopes or specialty papers

If regular paper feeds without problems, make sure:

- You are loading the envelopes correctly. For help, see “Loading specialty papers” on page 3.
- You are using an envelope size supported by your printer, and it is selected in Printer Properties.
- Your application is designed to print envelopes. Check the user’s documentation that came with your application.

Printer has a paper jam

Try removing the paper from the sheet feeder. If the paper is lodged too far into the printer and can’t be removed:

- 1 Press the Power button to turn the printer Off.

- 2 Pull firmly on the paper to remove it. If you cannot reach the paper because it is too far into the printer, raise the front cover and pull the paper out.
- 3 Close the front cover.
- 4 Press the Power button to turn the printer On.
- 5 Resend your document to print.

Document prints with mistakes or poor quality



Vertical straight lines are not smooth

To improve the print quality of vertical straight lines in tables, borders, and graphs:

- Select a higher Print Quality setting.
- Test the cartridge alignment. For help, see page 24.
- Clean the print nozzles. For help, see page 25.

Characters are missing or unexpected

- Make sure your Lexmark printer driver is selected as the default printer.
- Your printer may have two-way communication problems. For help, see page 28.

Printed pages have alternating bands of light and dark print (intermittent printing)

- Make sure Enable Buffer Mode is selected on the Options tab of the Control Program.
- Select High (1200 x 1200 dpi) or Maximum (2400 x 1200 dpi) Print Quality on the Document/Quality tab of Printer Properties.
- Your printer may have two-way communications problems. For help, see page 28.



Print is too dark or smudged

Make sure:

- You let the ink dry before handling the paper.
- The Paper Type setting in the Printer Properties matches the paper type loaded in the printer.
- The paper is straight and unwrinkled.
- The Print Quality setting is appropriate for the paper type. If you are printing on regular paper, select Draft (300 x 600 dpi).
- You may need to clean the print nozzles. For help, see page 25.

Print quality is poor at the left, right, top, or bottom edge of page

Like other printers, your printer cannot print in the extreme left, right, top, or bottom edges of a page. Use these minimum settings:

- Left and right margins:
6.35 mm (0.25 in.) each for all paper sizes except A4.
For A4 size paper- 3.37 mm (0.133 in.) each.
- Top and bottom margins:
Top - 1.7 mm (0.067 in.).
Bottom - 12.7 mm (0.5 in.).

Colors on the printout differ from the colors on the screen

- An ink cartridge may be out of ink or low on ink. Check the ink level graphic on the Cartridges tab of your printer's Control Program.
- From the Document/Quality tab of Printer Properties, select Natural Color as the Document Type.

- Use a different brand of paper. Every paper brand accepts ink differently and prints with slight color variations.
- Remove any extra devices such as a scanner, and connect the printer to the parallel port.

Colors on the printout are faded

- Your print cartridge may be low on ink. Check the ink level graphic on the Cartridges tab of your printer's Control Program.
- Clean the print nozzles. For help, see page 25.
- If the colors still seem faded, wipe the print nozzles and contacts. For help, see the Troubleshooting: Print Quality section of the printer driver Help.

Problems with transparencies, photos, envelopes...



Glossy photo papers or transparencies stick together

- Remove the photos or transparencies from the paper exit tray as they exit the printer.
- Let the photos or transparencies dry completely before stacking.
- Use a transparency or photo paper designed for an inkjet printer.

Transparencies or photos contain white lines

- From the Printer Properties, select High (1200 x 1200 dpi) or Maximum (2400 x 1200 dpi).
- Your print nozzles may need cleaning. For help, see page 25.

Printer does not feed envelopes or specialty papers

For help, see "Printer does not feed envelopes or specialty papers" on page 30.

Error messages and flashing lights



Power
light

Paper
Feed light

Paper Jam message

For help, see "Printer has a paper jam" on page 30.

Ink Low message

The print cartridge is running out of ink. Purchase a new print cartridge.

The Power light is On and the Paper Feed light is blinking

- If the printer is out of paper:
 - 1 Load paper.
 - 2 Press the Paper Feed button.
- If the printer has a paper jam, see page 30 for help.

The Power light blinks twice

The print cartridge carrier has stalled. Check your screen for any error messages.

- 1 Turn the printer Off.
- 2 Wait a few seconds and turn the printer back On.



Appendix



In this section, you can find information about:

- Installing printer software
- Uninstalling printer software
- Printing from DOS
- Warranty
- Notices
- Safety information

Installing printer software

You can obtain the printer software using:

- the compact disc (CD-ROM)
- the World Wide Web
- diskettes

If your printer software does not install properly, a communications error message appears when you try to print. You may need to uninstall, and then reinstall the printer software. For help, see “Uninstalling printer software” on page 36.

Using the CD-ROM

Follow the set of instructions that correspond to your operating system and printer cable (parallel or USB):

Window 98 - USB cable

- 1 Start Windows.
- 2 Click **Next** when the first screen displays.
- 3 Insert the software CD.
- 4 Click **Next** or **Finish** on any subsequent screens.

The Lexmark Z52 software installation screen appears.

- 5 Click **Install Printer Software**.

Windows 95/98/NT 4.0 - parallel cable

- 1 Start Windows.
- 2 Click **Cancel** on any screens that appear.
- 3 When the desktop appears, insert the software CD.

The Lexmark Z52 software installation screen appears.

- 4 Click **Install Printer Software**.

Windows 2000- parallel or USB cable

- 1 Start Windows.
- 2 Click **Cancel** on any screens that appear.
- 3 When the desktop appears, insert the software CD.

The Lexmark Z52 software installation screen appears.

4 Click **Install Printer Software**.

Note: If the CD does not run automatically when you insert it:

- a From the **Start** menu, select **Run**.
- b In the command-line text box, type the letter of your CD-ROM drive, followed by **:setup** (for example, **d:\setup**), and then click **OK**.

Using the World Wide Web

If your computer does not have a CD-ROM drive, you can download the printer software from Lexmark's Web site at www.lexmark.com

- 1 From Lexmark's Web site select the appropriate driver for your operating system.
- 2 Select **Save to Disk**.
- 3 Select a location on your hard disk drive.
- 4 Double-click the executable (.exe) file to open it.

The Win Self-Extractor window opens.

- 5 Follow the set of instructions on your screen.

Using diskettes

If your computer does not have a CD-ROM drive, you can create driver diskettes using a friend's computer or a computer at your Lexmark dealer that has a CD-ROM drive. You will need three blank 3.5 inch diskettes.

To create diskettes of the printer software:

- 1 Insert the printer software CD into the CD-ROM drive.

If the CD does not run automatically:
 - a From the **Start** menu, select **Run**.
 - b In the command-line text box, type the letter of your CD-ROM drive, followed by **:lsetup** (for example, **d:lsetup**), and then click **OK**.
- 2 When the Lexmark Z52 software installation screen displays, select **Tools**.
- 3 Select **Create Diskettes**.
- 4 Follow the instructions on the screen.

To install the printer software from diskettes:

- 1 Start Windows.
- 2 Insert Setup Disk 1 into your disk drive.
- 3 From the **Start** menu, choose **Run**.

- 4 In the command-line text box, type the letter of your disk drive, followed by **:lsetup** (for example, **a:lsetup**), and then click **OK**.
- 5 When prompted by the printer software, insert the appropriate disks into your disk drive and click **OK**.
- 6 Follow the instructions on the screen.

Ordering diskettes

If your computer does not have a CD-ROM drive, and you do not have access to either the World Wide Web or a computer with a CD-ROM drive, you can order diskettes from our Customer Support Center for a fee. Refer to the printer registration information for the telephone number in your country.

Uninstalling printer software

If your printer software does not install properly, you may need to uninstall, and then reinstall it.

To uninstall the printer software:

- 1 From the **Start** menu, select **Programs**.
- 2 Select **Lexmark Z52 Series**.
- 3 Select **Lexmark Z52 Series Uninstall**.
- 4 Follow the instructions on your screen.

To reinstall the printer software, follow the appropriate set of instructions from "Using the CD-ROM" on page 35.

Printing from DOS

To open your printer online Help system and find information on printing from DOS:

- 1 Open the Printer Properties (for help, see page 5), or the Control Program (for help, see page 21).
- 2 Click the **Help** button in the lower-right corner of the software screen.
- 3 At the top of the Help screen, click **Help Contents**.
- 4 Scroll down the screen to How to... .
- 5 From the How to... topics, click **Print from Windows and DOS applications**.

Statement of limited warranty

Lexmark International, Inc., Lexington, KY

This warranty applies to the United States and Canada. For customers outside the U.S. and Canada, refer to the country-specific warranty information that came with your printer.

Lexmark Z52 Color Jetprinter™

This Statement of Limited Warranty applies to this product if it was originally purchased for your use, and not for resale, from Lexmark or a Lexmark remarketer, referred to in this statement as "Remarketer."

Warranty

Lexmark warrants that this product:

- Is manufactured from new parts, or new and serviceable used parts, which perform like new parts,
- Is free from defects in material and workmanship,
- Conforms to Lexmark's official published specifications, and
- Is in good working order.

If this product does not function as warranted during the warranty period, contact a Remarketer or Lexmark for repair without charge.

If this product is a feature or option, this statement applies only when that feature or option is used with the product for which it was designed. To obtain warranty service, you may be required to present the feature or option with the product.

- If you transfer this product to another user, warranty service under the terms of this statement is available to that user for the remainder of the warranty period. You should transfer proof of original purchase and this statement to that user.

Warranty Service

The warranty period is 12 months and starts on the date of original purchase as shown on the purchase receipt.

To obtain warranty service you may be required to present proof of original purchase. Warranty

service will be provided at a Remarketer or a Lexmark designated location. You may be required to deliver your product to the Remarketer or Lexmark, or ship it prepaid and suitably packaged to a Lexmark designated location. You are responsible for loss of, or damage to, a product in transit to the Remarketer or the designated location.

When warranty service involves the exchange of a product or part, the item replaced becomes the property of the Remarketer or Lexmark. The replacement may be a new or repaired item. The replacement item assumes the remaining warranty period of the original product.

Replacement is not available to you if the product you present for exchange is defaced, altered, in need of a repair not included in warranty service, or damaged beyond repair. Also, such product must be free of any legal obligation or restrictions that prevent its exchange.

Before you present this product for warranty service, remove all programs, data, and removable storage media.

For further explanation of your warranty alternatives and the nearest Lexmark authorized servicer in your area, please contact Lexmark at 1-800-539-6275, or on the World Wide Web at www.lexmark.com.

Free remote technical support is provided for this product throughout its warranty period. For products no longer covered

by a Lexmark warranty, technical support may only be available for a fee.

Extent of Warranty

We do not warrant uninterrupted or error-free operation of a product.

Warranty service does not include repair of failures caused by:

- modification or attachments
- accidents or misuse
- unsuitable physical or operating environment
- maintenance by anyone other than Lexmark or a Lexmark authorized servicer
- operation of a product beyond the limit of its duty cycle
- failure to have installed a maintenance kit as specified (if applicable)
- use of printing media outside of Lexmark specifications
- use of other than Lexmark supplies (such as toner cartridges, inkjet cartridges, and ribbons)
- use of other than Lexmark product or component

ALL EXPRESS AND IMPLIED WARRANTIES, INCLUDING THE IMPLIED WARRANTIES OF MERCHANTABILITY AND FITNESS FOR A PARTICULAR PURPOSE, ARE LIMITED IN DURATION TO THE WARRANTY PERIOD. NO WARRANTIES, EXPRESS OR IMPLIED, WILL APPLY AFTER THIS PERIOD.

Limitation of Liability

Your sole remedy under this Statement of Limited Warranty is set forth in this section. For any claim concerning performance or nonperformance of Lexmark or a Remarketer for this product under this Statement of Limited Warranty, you may recover actual damages up to the limit set forth in the following paragraph.

Lexmark's liability for actual damages from any cause whatsoever will be limited to the greater of 1) \$5,000 or 2) the amount you paid for the product that caused the damages. This limitation of liability will not apply to claims by you for bodily injury or damage to real property or tangible personal property for which Lexmark is legally liable. In no event will Lexmark be liable for any lost profits, lost savings, incidental damage, or other economic consequential damages. This is true even if you advise Lexmark or a Remarketer of the possibility of such damages. Lexmark is not liable for any claim by you based on a third party claim.

This limitation of remedies also applies to any developer of materials supplied to Lexmark. Lexmark's and the developer's limitations of remedies are not cumulative. Such developer is an intended beneficiary of this limitation.

Additional Rights

Some states do not allow limitations on how long an implied warranty lasts, or do not allow the exclusion or limitation of incidental or consequential damages. If such laws

apply, the limitations or exclusions contained in this statement may not apply to you.

This warranty gives you specific legal rights. You may also have other rights which vary from state to state.

Electronic emission notices

Federal Communications Commission (FCC) Compliance Information Statement

The Lexmark Z52 Color Jetprinter has been tested and found to comply with the limits for a Class B digital device, pursuant to Part 15 of the FCC Rules. Operation is subject to the following two conditions: (1) this device may not cause harmful interference, and (2) this device must accept any interference received, including interference that may cause undesired operation.

The FCC Class B limits are designed to provide reasonable protection against harmful interference in a residential installation. This equipment generates, uses and can radiate radio frequency energy and, if not installed and used in accordance with the instructions, may cause harmful interference to radio communications. However, there is no guarantee that interference will not occur in a particular installation. If this equipment does cause harmful interference to radio or television reception, which can be determined by turning the equipment off and on, the user is encouraged to try to correct the interference by one or more of the following measures:

- Reorient or relocate the receiving antenna.
- Increase the separation between the equipment and receiver.
- Connect the equipment into an outlet on a circuit different from that to which the receiver is connected.
- Consult your point of purchase or service representative for additional suggestions.

The manufacturer is not responsible for any radio or television interference caused by using other than recommended cables or by unauthorized changes or modifications to this equipment. Unauthorized changes or modifications could void the user's authority to operate this equipment.

Note: To assure compliance with FCC regulations on electromagnetic interference for a Class B computing device, use a properly shielded and grounded cable such as Lexmark part number 1329605 for parallel attach or 43H5856 for USB attach. Use of a substitute cable not properly shielded and grounded may result in a violation of FCC regulations.

Any questions regarding this compliance information statement should be directed to:

Director of Lab Operations
Lexmark International, Inc.
740 West New Circle Road
Lexington, KY 40550
(606) 232-3000

Industry Canada Compliance Statement

This Class B digital apparatus meets all requirements of the Canadian Interference-Causing Equipment Regulations.

Avis de conformité aux normes d'Industrie Canada

Cet appareil numérique de la classe B respecte toutes les exigences du Règlement sur le matériel brouilleur du Canada.

European Community (EC) Directives Conformity

This product is in conformity with the protection requirements of EC Council directives 89/336/EEC and 73/23/EEC on the approximation and harmonization of the laws of the Member States relating to electromagnetic compatibility and safety of electrical equipment designed for use within certain voltage limits.

A declaration of conformity with the requirements of the Directive has been signed by the Director of Manufacturing and Technical Support, Lexmark International, S.A., Boigny, France.

This product satisfies the Class B limits of EN 55022 and safety requirements of EN 60950.

Japanese VCCI Notice

この装置は、情報処理装置等電磁障害自主規制協議会（VCCI）の基準に基づくクラスB情報技術装置です。この装置は、家庭環境で使用することを目的としていますが、この装置がラジオやテレビジョン受信機に近接して使用されると、受信障害を引き起こすことがあります。
取扱説明書に従って正しい取り扱いをして下さい。

The United Kingdom Telecommunications Act 1984

This apparatus is approved under the approval number NS/G/1234/J/100003 for the indirect connections to the public telecommunications systems in the United Kingdom.

Energy star



The EPA ENERGY STAR Computers program is a partnership effort with computer manufacturers to promote the introduction of energy-efficient products and to reduce air pollution caused by power generation.


Companies participating in this program introduce personal computers, printers, monitors, or fax machines that power down when they are not being used. This feature will cut the energy used by up to 50 percent. Lexmark is proud to be a participant in this program.

As an Energy Star Partner, Lexmark International, Inc. has determined that this product meets the Energy Star guidelines for energy efficiency.

Power supply

If your power supply fails, replace it with the Lexmark replacement part or other UL LISTED Direct Plug-In Power Unit marked "Class 2" and rated 30 Vdc at 1A.

Safety information

- If your product is NOT marked with this symbol , it MUST be connected to an electrical outlet that is properly grounded.
- The power cord must be connected to an electrical outlet that is near the product and easily accessible.
- Refer service or repairs, other than those described in the operating instructions, to a professional service person.
- This product is designed, tested and approved to meet strict global safety standards with the use of specific Lexmark components. The safety features of some parts may not always be obvious. Lexmark is not responsible for the use of other replacement parts.



Index



A

aligning print cartridges 24

B

banding 31
banner paper
 loading 3
 setting recommendations 7
bidirectional communications
 disabling 27
 problems
 indicators 28
binding options
 long edge 10
 short edge 10
blinking lights
 Paper Feed 34
 Power 34
booklets
 building 17
 bundling 17
 printing 15
buttons
 Clean Print Nozzles 25

C

cards
 loading 3
 setting recommendations 7

cartridges, print
 aligning 24
 installing 22
 part numbers 21
 preserving 26
 removing 22
 replacing 22
CD-ROM
 installing software 35
characters, missing or unexpected 31
contacts
 print nozzles 26
Control Program
 using 21
 align print cartridges 24
crop marks, selecting 18
custom-sized paper
 loading 4
 setting recommendations 8

D

default settings 7
diskettes
 installing software 36
 ordering 36
DOS printing 36
downloaded printer driver
 installing 35
duplexing 9

E

electronic emission notices 38
energy star 39
envelopes
 loading 3
 setting recommendations 7
error messages
 Ink Low 34
 Paper Jam 30, 34
 Printer Offline 29
European Community Directives Conformity 39

F

Federal Communications Commission Compliance Information Statement 38
flashing lights
 troubleshooting 34
foils
 loading 3
 setting recommendations 8

G

greeting cards
 loading 3
 setting recommendations 7

H

- halftone settings
 - adjusting 6
- handouts, printing 12

I

- image settings
 - adjusting 6
- improving print quality 23
- index cards
 - loading 3
 - setting recommendations 7
- Industry Canada Compliance Statement 38
- Ink Low message 34
- installing
 - print cartridge 22
 - printer software 35
- intermittent printing 31
- Internet printing
 - Web Smoothing 6
- iron-on transfers
 - loading 4
 - setting recommendations 8

J

- Japanese VCCI Notice 39

L

- lights
 - Paper Feed 34
 - patterns 34
 - Power 22
- loading
 - paper 2
 - specialty papers 3
- long edge binding 10

M

- Macintosh 1
- margins, minimum settings 32
- messages, error
 - Ink Low 34
 - Paper Jam 34
 - Printer Offline 29

N

- notices
 - electronic emission 38
 - energy star 39
 - European Community Directives Conformity 39
 - FCC Statement 38
 - Industry Canada Compliance Statement 38
 - Japanese VCCI Notice 39
 - safety information 39
 - warranty statement 36
- nozzles, print
 - cleaning 25
 - wiping 26
- n-up printing
 - see handouts 12

O

- ordering
 - diskettes 36
 - supplies 21

P

- Paper Feed light 34
- paper guide
 - locating 2
 - using 2
- paper, loading 2

- parallel cable
 - connection problems 27
 - specifications 27
- photo paper
 - problems 33
 - setting recommendations 7
- postcards
 - loading 3
 - setting recommendations 7
- poster
 - assembling 19
 - printing 18
 - selecting specific pages 20
- Power light
 - flashing 34
- power supply, replacing 39
- print cartridges
 - aligning 24
 - cleaning 25
 - installing 22
 - part numbers 21
 - preserving 26
 - removing 22
 - replacing 22
 - wiping nozzles 26
- print nozzle contacts
 - wiping 26
- print nozzles
 - cleaning 25
 - wiping 26
- print quality
 - banding 31
 - different colors 32
 - faded colors 33
 - improving 23
 - missing colors 25, 32
 - smudged 32
 - too dark 32
 - troubleshooting 31

printer driver
installing
 CD-ROM 36
 diskettes 36
 downloaded from the web 35

Printer Properties
 customizing 5
 for booklets 15
 for poster 18
 for two-sided printing 10

 opening
 from an application 5
 from Windows 5

 setting recommendations 7

 tabs 5, 6

printer software
 installing
 CD-ROM 35
 diskettes 35
 downloaded driver 35

 Printer Properties 5

 uninstalling 36

printing
 booklets 15

 from DOS 36

 handouts 12

 on both sides of the paper 9

 posters 18

 using Web smoothing 6

printing problems
 color quality 32

 faded colors 33

 intermittent 31

 missing colors 25, 32

 paper feeding 30

 paper jam 30

 paper misfeeds 30

R

release tab
 locating 2
 using 2

reloading instructions
 two-sided printing 10

removing print cartridge 22

reverse page order 6

S

safety information 39

select pages to print button 20

setting recommendations
 banner paper 7

 cards 7

 custom-sized paper 8

 envelopes 7

 iron-on transfers 8

 normal 7

 photo papers 7

 poster 18

 transparencies 8

 two-sided printing 10

sheet feeder 2

Sheets Per Bundle
 selecting 15

short edge binding 10

software applications
 Control Program 21

software, printer
 installing 35

 uninstalling 36

specialty papers
 banner paper 3

 cards 3

 custom-sized paper 4

 envelopes 3

 iron-on transfers 4

 loading 2

 photo paper 3

 transparencies 3

statement of limited warranty 36

supplies
 ordering 21

 power supply 39

T

test page
 alignment 24

 does not print 29

 nozzle test pattern 25

transparencies
 loading 3

 problems 33

 setting recommendations 8

troubleshooting
 blank pages 28

 color quality 32

 doesn't print 28

 envelopes don't print 30

 error messages 34

 faded colors 33

 flashing lights 34

 missing colors 32

 pages stick together 33

 paper feed problems 30

 paper jam 30

 print quality 31

 slow print 28

 two-way communications 28

two-sided printing
 reloading instructions 10

 setting recommendations 10

two-way communications
 disabling 27

 problems
 indicators 28

U

- uninstalling
 - printer software 36
- United Kingdom Telecommunications Act 1984 39

W

- warranty statement 36
- Web Smoothing 6
- Windows 2000 1
- Windows NT 4.0 1
- World Wide Web
 - installing printer software 35